

1926 Abrikossoff
가

6 - 8%
(1 - 3).

(1 - 5).

가

(1, 3, 5). Abrikossoff (1)

6 - 8%

가
가

S - 100

(1 - 6).

63

가

(2, 3).

가

가

가

가

(Fig. 1A).
1.2 cm

가

가 (Fig. 1B).

(1 - 6).

가

가

가

가
가

가

80

가

가

가

가
(1 -

6).

(Figs. 1C, D).

가

S - 100

가

(Fig. 1E).

(7).

가

1

2

2006 1 27

2006 3 31

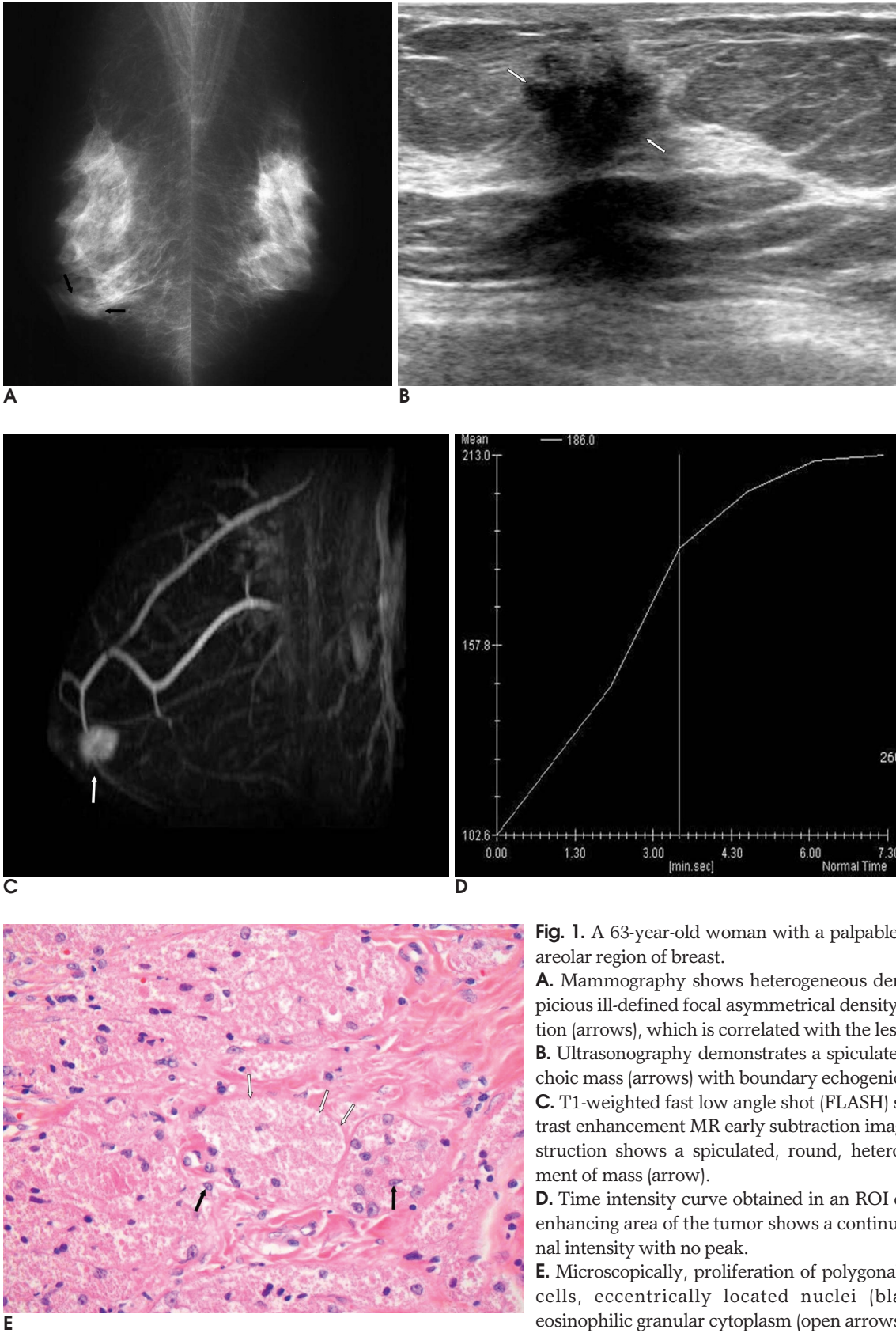


Fig. 1. A 63-year-old woman with a palpable mass in right subareolar region of breast.

A. Mammography shows heterogeneous dense breast and suspicious ill-defined focal asymmetrical density on subareolar portion (arrows), which is correlated with the lesion of palpation.

B. Ultrasonography demonstrates a spiculated, irregular hypoechoic mass (arrows) with boundary echogenicity.

C. T1-weighted fast low angle shot (FLASH) sequence after contrast enhancement MR early subtraction image with MIP reconstruction shows a spiculated, round, heterogeneous enhancement of mass (arrow).

D. Time intensity curve obtained in an ROI drawn in the most-enhancing area of the tumor shows a continuous increase in signal intensity with no peak.

E. Microscopically, proliferation of polygonal to spindle shaped cells, eccentrically located nuclei (black arrows) and eosinophilic granular cytoplasm (open arrows) (H & E; $\times 400$).

가 S - 100

2%

, 5 cm

(1, 2).

가 10%

(1, 2, 8).

1. Adeniran A, Al-Ahmadie H, Mahoney MC, Robinson-Smith TM. Granular cell tumor of the breast: a series of 17 cases and review of

the literature. *Breast J* 2004;10:528-531

2. Delaloye JF, Seraj F, Guillou L, Genton CY, Anciaux-Le Teno D, Schnyder P, et al. Granular cell tumor of the breast: a diagnostic pitfall. *Breast* 2002;11:316-319
3. Kim EK, Lee MK, Oh KK, Granular cell tumor of the breast. *Yonsei Med J* 2000;41:673-675
4. Gogas J, Markopoulos C, Kouskos E, Gogas H, Mantas D, Antonopoulou Z, et al. Granular cell tumor of the breast: a rare lesion resembling breast cancer. *Eur J Gynecol Oncol* 2002;23:333-334
5. Park NH, Song SY, Kim MS, Lee EJ, Park CS, Oh WE, et al. Ultrasonographic Finding of Granular Cell Tumor of Breast: Case Report. *J Korean Radiol Soc* 2004;50:73-75
6. Feder JM, de Paredes ES, Hogge JP, Wilken JJ. Unusual breast lesions: radiologic-pathologic correlation. *Radiographics* 1999;19:S11-26
7. Okada K, Ozeki K, TI, Isomoto I, Matsuo T, Mochinaga N. Granular cell tumor of the breast: a case report describing dynamic MR mammography. *Breast Cancer* 1998;5:179-182
8. Tai G, D Costa H, Lee D, Watkins RM, Jones P. Case report: coincident granular cell tumor of the breast with invasive ductal carcinoma. *Br J Radiol* 1995;68:1034-1036

J Korean Radiol Soc 2006;55:199 - 201

Granular Cell Tumor Simulating Breast Malignancy: A Case Report¹

Sung Soo Lee, M.D., Yun-Woo Chang, M.D., Duek Lin Choi, M.D., Dong Erk Goo, M.D.,
Seung Boo Yang, M.D., Dong Wha Lee, M.D.²

¹Department of Radiology, Soonchunhyang University Hospital

²Department of Pathology, Soonchunhyang University Hospital

Granular cell tumor is a rare and usually benign tumor that occasionally involves the breast. The physical examination, the mammographic and ultrasonographic findings and the pathologic findings are often suggestive of carcinoma. We report here a rare case of granular cell tumor of the breast that mimicked carcinoma on the mammography, ultrasonography and MR imaging.

Index words : Breast, MR
Images, display
Breast neoplasms, diagnosis

Address reprint requests to : Yun-Woo Chang, M.D., Department of Radiology, Soonchunhyang University Hospital
657 Hannam-dong, Yongsan-gu, Seoul 140-743, Korea
Tel. 82-2-709-9396 Fax. 82-2-709-3928 E-mail: ywchang@hosp.sch.ac.kr