

6

:

1

.

.

.

.

:

(KoMCI)

6

(IF)

: 6

, IF

(ZIF)

. IF 5

2

5

가

:

6

282

121

2000

.

15.16 - 16.37

0.98

2005

0.85

가

2000

394

2005

180

55.6%

22.8%

IF 2000

0.142

69

36

2005

0.089 118

89

, ZIF 2000

0.049(29)

2005

0.059(61)

IF 5

55%

, IF

2

/ 2

5

24%

5

2

가

5

18%

:

6

, IF

IF

2

IF

가

. 가

ISI가
(Science Citation Index, SCI) 가

, 2

(impact factor, IF)

(1).

SCI

가

가

가

가

2006 6 19

2006 8 21

가

, 2002

Index, KoMCI)가 (Korean Medical Citation Index, KoMCI)가 IF 5 IF KoMCI IF 5 가가 가 . IF IF 6 , IF가 5 2 IF 가 , IF IF / , 2 / / , 2 / 2 (IF), 2 / 2 4 가 , , ' (IF) ' (ZIF) . 2000 2005 6 , IF 5 Table 1 2000 2005 , , , 2000 2005 2000 2005 KoMCI 2000 282 2005 121 , 57% , , 2000 4,276 2005 1,981 2000 15.2 2005 16.4 가 , 0.98 2005 0.85 (Fig. 1). KoMCI 1964 (2-7).

Table 1. Citation Trends of the Journal of Korean Radiological Society (JKRS) during 2000-2005

Year	No. of Published Papers	Total No. of References	No. of References/ Paper	No. of Korean References* /Paper	Citations received [†]			Self-citations /Paper Journals/ paper	Citations by Other KoMCI [‡] Citing JKRS	Other KoMCI [‡] Journals
					Total	Journal's Self-citations(%)	Citations by Other KoMCI [‡] Journals (%)			
2000	282	4,276	15.2	0.98	394	219 (55.6)	175 (44.4)	0.78	0.62	21
2001	197	3,100	15.7	1.19	307	163 (53.1)	144 (46.9)	0.83	0.73	18
2002	193	3,064	15.9	1.07	241	128 (53.1)	113 (46.9)	0.66	0.59	24
2003	148	2,280	15.4	1.03	226	104 (46.0)	122 (54.0)	0.70	0.82	22
2004	156	2,499	16.0	0.67	220	74 (33.6)	146 (66.4)	0.47	0.94	17
2005	121	1,981	16.4	0.85	180	41 (22.8)	139 (77.2)	0.34	1.14	24

* Excluding references of Korean textbook, reports, and web site

[†] Citations among the papers published in the Journal of Korean Radiological Society from the first publication in 1964

[‡] Korean Medical Citation Index

2000 394

2005 180

55.6%

22.8%

2005 0.34

44.4%

2005 77.2%

가

2000 0.62

2005 1.14

가 (Fig. 2). KoMCI

2000 69

2005 118

가

2004 17

2002

2005 24

Table 2

IF

2

ZIF

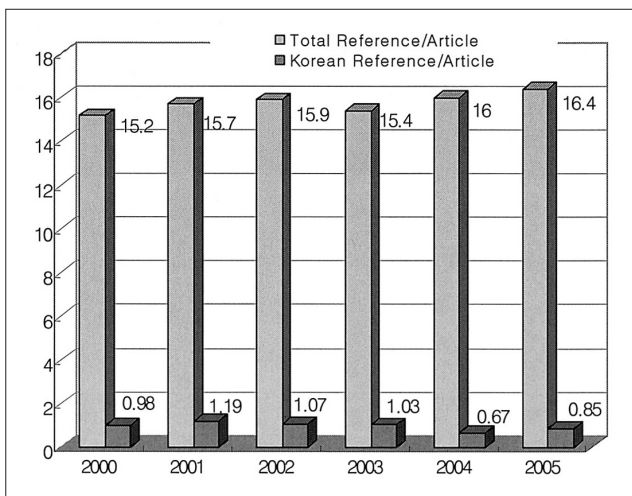


Fig. 1. Changes of Total References/Article and Korean References/Article in the Journal of Korean Radiological Society during 2000-2005.

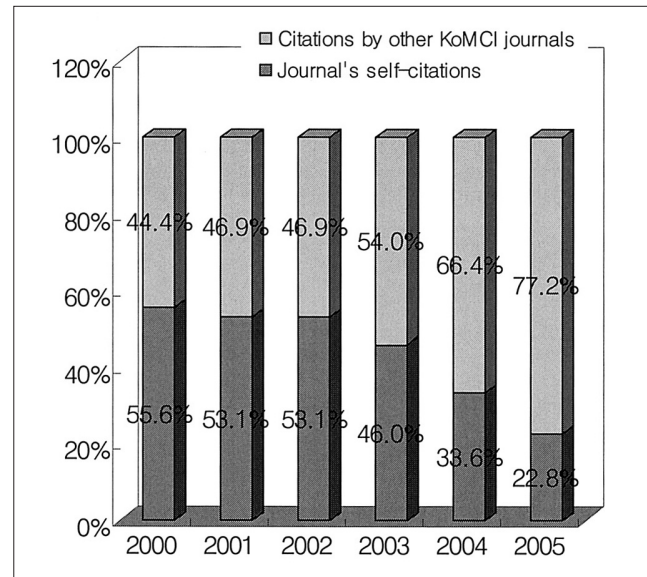


Fig. 2. Changes of Self-citations and Citations by Other KoMCI Journals in the Journal of Korean Radiological Society during 2000-2005.

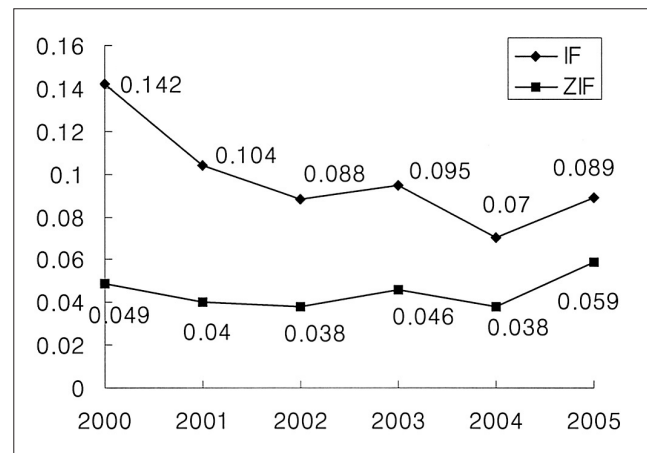


Fig. 3. Changes of IF and ZIF in the Journal of Korean Radiological Society during 2000-2005.

Table 2. Changes of IF and ZIF of the Journal of Korean Radiological Society during 2000-2005

Year	No. of Papers		Total Citations Received*		Citations Excluding Self-citation*		IF [†] (Ranking)	ZIF [§] (Ranking)	Enlisted Journals on KoMCI [†]
	year-1	year-2	year-1	year-2	year-1	year-2			
2000	360	360	40	62	13	22	0.142 (36)	0.049 (29)	69
2001	282	360	26	41	14	12	0.104 (50)	0.040 (37)	75
2002	197	282	12	30	4	14	0.088 (58)	0.038 (39)	81
2003	193	197	16	21	9	9	0.095 (69)	0.046 (45)	97
2004	148	193	8	16	5	8	0.070 (86)	0.038 (61)	105
2005	156	148	14	13	10	8	0.089 (89)	0.059 (52)	118

* Citations that citing papers published within recent two years

[†] Korean Medical Citation Index

[‡] IF: impact factor (number of citations that citing papers published within the last two years/number of papers published for the last two years)

[§] ZIF: impact factor excluding self-citations

			IF	2000	0.142			0.529 (0.352 - 0.529)	
			2005		0.089			0.098 (0.070 - 0.142)	5
IF	2000	69		36		24% (17 - 40%)	(Fig. 4B).		
2005	118	89							2003
		ZIF	2000	0.049(29)	5	80%		5	
	2005	0.059 (61)		(Fig. 3).	48% - 61%				, IF
						2			2000
IF	5				5	40%			
IF					2005	17%	(Fig. 4B).		
Table 3	IF	5							
									5
			IF	5			1.393 (1.006 - 1.667)		
	6	2.601 (1.905 - 3.240)					0.629 (0.339 - 0.819)	5	
		1.435 (1.249 - 1.543)		5		45% (20% - 70%)	(Fig. 5A),	2	
	55% (48% - 80%)	(Fig. 4A).	IF						
	2			5	5		0.274 (0.192 - 0.362)		

Table 3. Comparison of Citation Data between Top 5 Journals and Journal of Korean Radiological Society (JKRS)

Year	Citations Received [†] / No. of Papers		Self-citations [‡] / No. of Papers		Citations Received [‡] No. of Papers for Recent 2 Years (IF)		Self-citations [‡] No. of Papers for Recent 2 Years	
	Top 5 Journals*	JKRS	Top 5 Journals*	JKRS	Top 5 Journals*	JKRS	Top 5 Journals*	JKRS
2000	2.531	1.397 (55%)	1.117	0.777 (70%)	0.352	0.142 (40%)	0.192	0.093 (48%)
2001	3.240	1.543 (48%)	1.593	0.819 (51%)	0.387	0.104 (27%)	0.231	0.040 (17%)
2002	2.041	1.249 (61%)	1.420	0.663 (47%)	0.407	0.088 (22%)	0.333	0.050 (15%)
2003	1.905	1.527 (80%)	1.006	0.703 (70%)	0.392	0.095 (24%)	0.246	0.049 (20%)
2004	2.788	1.410 (51%)	1.553	0.474 (31%)	0.416	0.070 (25%)	0.277	0.032 (12%)
2005	3.103	1.488 (48%)	1.667	0.339 (20%)	0.529	0.089 (17%)	0.362	0.030 (8%)
Average	2.601	1.435 (55%)	1.393	0.629 (45%)	0.414	0.098 (24%)	0.274	0.049 (18%)

* Top 5 journals ordered by IF

[†]Citations that Citing All Papers Published from Journal's First Publication

[‡]Citations that Citing Papers Published within Recent 2 Years

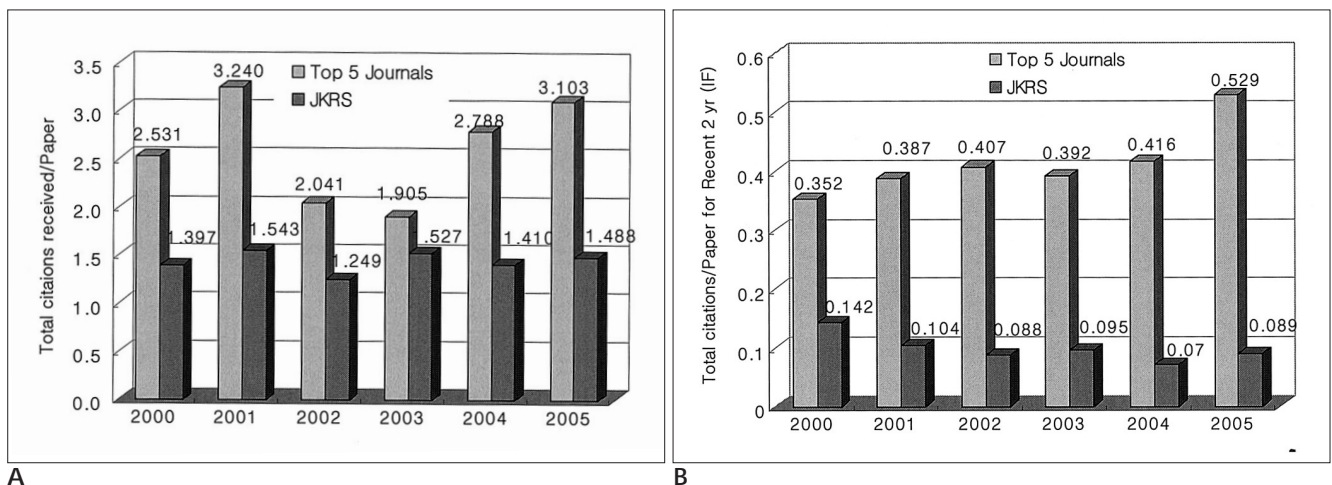


Fig. 4. A. Comparison of Total Citations that Citing Papers Published from Journal's First Publication/No. of Papers for One Year; Top 5 Journals vs Journal of Korean Radiological Society (JKRS).

B. Comparison of Total Citations that Citing Papers Published within Recent 2 Years/No. of Papers Published for Recent 2 Years; Top 5 Journals vs Journal of Korean Radiological Society (JKRS).

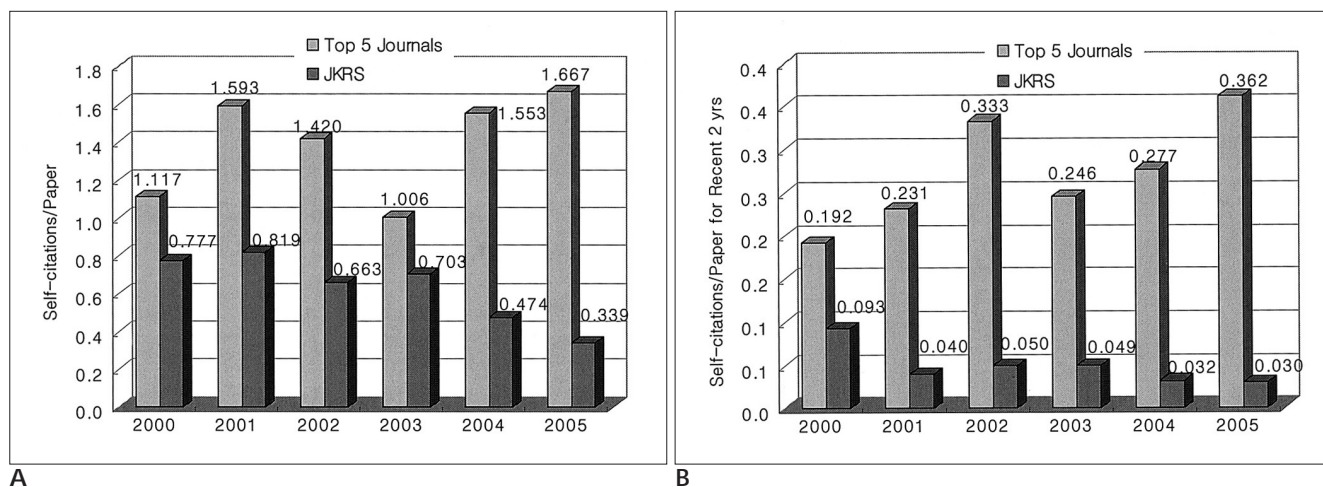


Fig. 5. A. Comparison of Self-citations that Citing Papers Published from Journal's First Publication/No. of Papers for One Year; Top 5 journals vs Journal of Korean Radiological Society (JKRS).
B. Comparison of Self-citations that Citing Papers Published within Recent 2 Years/No. of Papers Published for Recent 2 Years; Top 5 Journals vs Journal of Korean Radiological Society (JKRS).

0.049 (0.030 - 0.093)

5 18%

6

2000 5

70% 2005 20% , 2

2000 5

48% 2005 8% (Fig. 5B).

ZIF 0.045 (0.038 - 0.059)

5 0.127 (0.083 - 0.146) 35%

가

, 1990

(10) 18.2

2000 6

15.8

0.97 (6%)

10%

IF가

IF 1 - 2

IF가

(8, 9).

IF 6 0.070 - 0.142

ZIF 6

0.038 - 0.063

2

가

7 - 14%, 2

가 4 - 6%

IF

2000 0.142

69 KoMCI 36

2005 0.089 118

89 IF 5

IF

2000

IF가 0.352 2005 0.529

0.142 0.089

, Yang et al. (9)

- IF . 5 IF IF 2
- 2003 56% IF 5 2 (13). KoMCI 가가
- 24% 2 5 IF 가 가 IF .
- IF 2 IF 가 6
- 가 SCI KoMCI 2005
- 2 IF 5 2
- IF 가 , IF IF
- 가 5 45% 2 IF
- 18% 2 5 2
- 가 2000 2005
- 2005 5 17%, 8%
- 5 50% (8, 11) IF가
- (12) 가 가
- 가 IF (11). 가
- 2 IF
- 2 IF
1. Science Citation Index, *Journal Citation Reports*. Philadelphia, Pennsylvania, USA: Institute for Scientific Information, 1997
 2. . *KoMCI 2000* . : , 2002 (<http://komci.kams.or.kr/contents.html>)
 3. . *KoMCI 2001* . : , 2002 (<http://komci.kams.or.kr/contents01.html>)
 4. . *KoMCI 2002* . : , 2003 (<http://komci.kams.or.kr/contents02.html>)
 5. . *KoMCI 2003* . : , 2004 (<http://komci.kams.or.kr/contents03.html>)
 6. . *KoMCI 2004* . : , 2005 (<http://komci.kams.or.kr/contents04.html>)
 7. . *KoMCI 2005* . : , 2006 (<http://komci.kams.or.kr/contents05.html>)
 8. . :2000 -2002 . . *KoMCI 2001* . : , 2000:7-18 (<http://komci.kams.or.kr/compare02.html>)
 9. Yang HJ, Chung HT, Yi MA, Kim DG. Citations of Journal of Korean Neurosurgical Society assessed by KoMCI-trends in recent five years. *J Korean Neurosurg Soc* 2005;35:403-405
 10. , , , . 3 1990;26:804-810
 11. . *KoMCI 2000* . *KoMCI 2000* . : , 2000:7-20
 12. Fassoulaki A, Paraskeva A, Papilas K, Karabinis G. Self-citations in six anaesthesia journals and their significance in determining the impact factor. *Br J Anaesth* 2000;84:266-269
 13. Instructions for authors. Journal of Korean Neurosurgical Society Web site. <http://www.jkns.or.kr/html/notices.asp>. Accessed July 23, 2006.

Recent Trends of Citation Status and Suggestions for Improved the Academic Authority of the Journal of the Korean Radiological Society during 2000-2005: Analysis of All Citations using KoMCI¹

Soo Youn Park, M.D., Hyun Jin Kim, M.D., Yon Kwon Ihn, M.D.,
Eun Suk Cha, M.D., Seong Su Hwang, M.D.

¹Department of Radiology, College of Medicine, The Catholic University of Korea

Purpose: We wanted to analyze the citation trend and to find a way to improve the impact factor (IF) of the Journal of the Korean Radiological Society (JKRS).

Materials and Methods: The number of articles and references, the total citations and self-citations, the IF and the IF excluding self-citations (ZIF) were described by an analysis of Korean Medical Citation Index (KoMCI) during 2000-2005. The total and self citations of the JKRS were compared to that of the Top 5 journals.

Results: There was a 57% decrease of papers for 6 years. The Korean references/paper ranged from 0.98-0.85. The number of total citations received steadily decreased from 394 in 2000 to 180 in 2005. The IF (ZIF) of the JKRS has been gradually lowered from 0.142 (0.049) in 2000 to 0.063 (0.059) in 2005. Although the total citations that cited all papers published/the annual number of papers was 55% of that of the top 5 journals, the total citations citing papers published within the recent two years was only 24% of that of the top 5 journals.

Conclusion: The citation status of the JKRS has steadily decreased for the recent 6 years, and the IF of the JKRS was very low among all the Korean medical journals. To improve the IF, active advertising for the journal members of the importance of the IF is needed to encourage citing JKRS papers that have been published within the recent two years.

Index words : Data analysis
Statistic analysis

Address reprint requests to : Seong Su Hwang, M.D., Department of Radiology, St. Vincent 's Hospital College of Medicine,
The Catholic University of Korea, 93-1 Chi-dong, Paldal-gu, Suwon, Kyunggi-do 442-023, Korea.
Tel. 82-31-249-7486 Fax. 82-31-247-5713 E-mail: sshwang7@catholic.ac.kr