

CT : 1

. . . . 2

CT

1

(Adult-onset Still's disease)

가 (Fig. 1C),

(Figs. 1D, 1E).

(DLCO)

가

가

(1).

CT

2

CT

(Fig.

1F),

(Fig. 1G),

43

가 1

가

(Still's disease)

가 가 (11,800/mm³),

35

CT

(Figs. 1A, B). Yamaguchi

(2)

(3).

1

가

가 Yamaguchi

(4). Yamaguchi

, 39

(25,400/mm³),

가 가

가 (>10000/mm³)

CT

¹가

²가

2005 10 21

2005 11 23

5

2

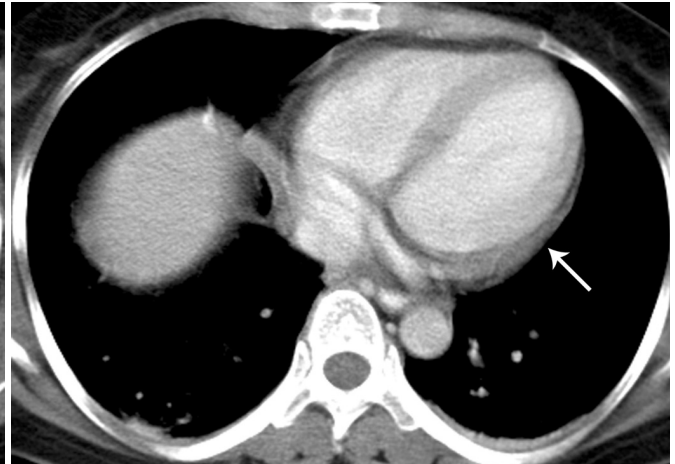
(2).

가

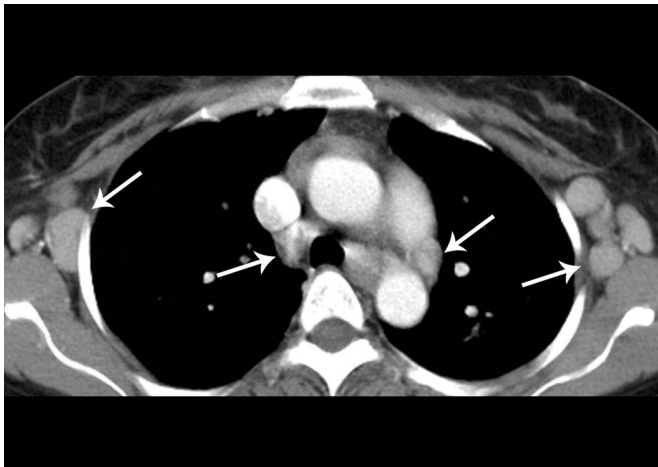
가



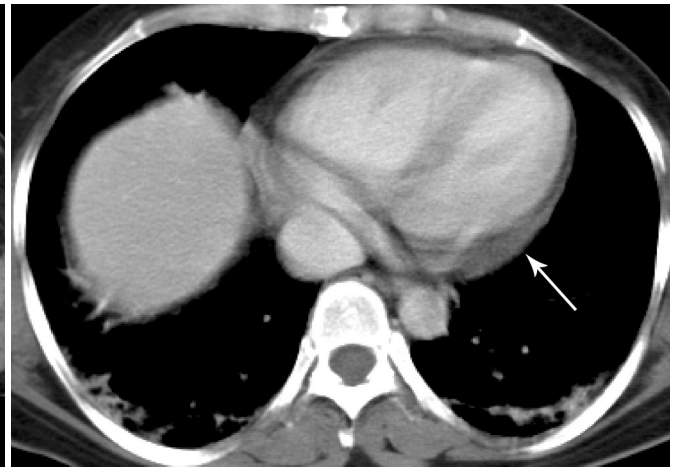
A



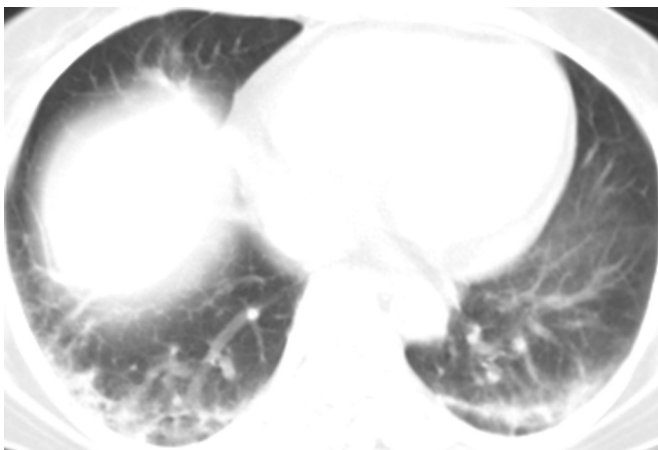
B



C



D



E

Fig. 1. A 45-year-old female patient with adult-onset Still's disease.

A and B. Initial contrast-enhanced CT scan shows minimal amount of pericardial and bilateral pleural effusions (arrows).

C, D and E. The contrast-enhanced CT scan after one year shows multiple, well-enhancing lymph nodes (arrows) at both axillae and mediastinum (**C**), minimal pericardial effusion (arrow) (**D**) and irregular infiltrations at dependent portion of both lung bases (**E**).

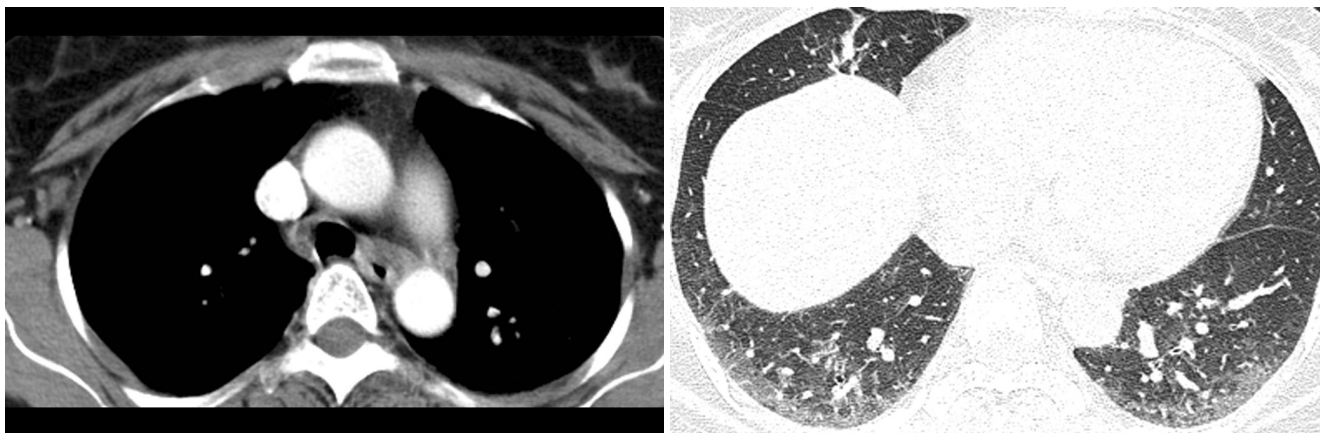


Fig. 1. F and G. The follow-up CT scans after two-month of steroid therapy shows markedly decreased size of the lymph nodes (F) and near complete clearing of infiltrations in both lung bases (G).

(7).

(1).
가

가

CT

CT

45

CT

가

CT

(5).

(6).

Kikuchi

(3).

1. Cheema GS, Quismorio FP. Pulmonary involvement in adult-onset Still 's disease. *Curr Opin Pulm Med* 1999;5:305-309
2. Yamaguchi M, Ohta A, Tsunematsu T, Kasukawa R, Mizushima Y, Kashiwagi H, et al. Preliminary criteria for classification of adult Still 's disease. *J Rheumatol* 1992;19:424-430
3. Kadar J, Petrovicz E. Adult-onset Still 's disease. *Best Pract Res Clin Rheumatol* 2004;18:663-676
4. Masson C, Le Loet X, Liote F, Dubost JJ, Boissier MC, Perroux-Goumy L, et al. Comparative study of 6 types of criteria in adult Still 's disease. *J Rheumatol* 1996;23:495-497
5. Hirohata S, Kamoshita H, Taketani T, Maeda S. Adult Still 's disease complicated with adult respiratory distress. *Arch Intern Med* 1986;146:2409-2410
6. Van Hoeyweghen RJ, De Clerck LS, Van Offel JF, Stevens WJ. Interstitial lung disease and adult-onset Still 's disease. *Clin Rheumatol* 1993;12:418-421
7. Jeon YK, Paik JH, Park SS, Park SO, Kim YA, Kim JE, et al. Spectrum of lymph node pathology in adult onset Still 's disease: analysis of 12 patients with one follow up biopsy. *J Clin Pathol* 2004;57:1052-1056

Thoracic CT Findings of Adult-Onset Still's Disease: A Case Report¹

Sun Young Choi, M.D., Kijun Kim, M.D., Jung Whee Lee, M.D.,
Sung Yong Lee, M.D., Yeon Sik Hong, M.D.²

¹*Department of Radiology, Our Lady of Mercy Hospital, The Catholic University of Korea*

²*Department of Internal Medicine, Our Lady of Mercy Hospital, The Catholic University of Korea*

Adult-onset of Still's disease is a rare systemic rheumatic disorder. It involves various organs including the lungs and pleura. We report here the CT findings of a patient with the thoracic manifestations of Still's disease, including axillary and mediastinal lymphadenopathies, pleural and pericardial effusions and infiltrations in both lung bases.

Index words : Thorax, CT
Thorax, diseases
Arthritis, rheumatoid

Address reprint requests to : Kijun Kim, M.D., Department of Radiology, Our Lady of Mercy Hospital, The Catholic University of Korea,
665, Bupyeong-dong, Bupyeong-gu, Incheon 403-720, Republic of Korea.
Tel. 82-32-510-5531 Fax. 82-32-529-0964 E-mail: kjrad@catholic.ac.kr