



(Mucocoele - like tumor)

가

1

(Figs. 1A and B).

(1). 1986

3 cm  
(microlobulation)

3.1 cm

(echogenic halo)

(1, 2).

(Fig. 1C).

(ductal carcinoma in

2 cm

cm

(Fig. 1D).

12

2.1

가

10

12

46

가

positron - emission tomography (PET)

10%

(milk of calcium)

가

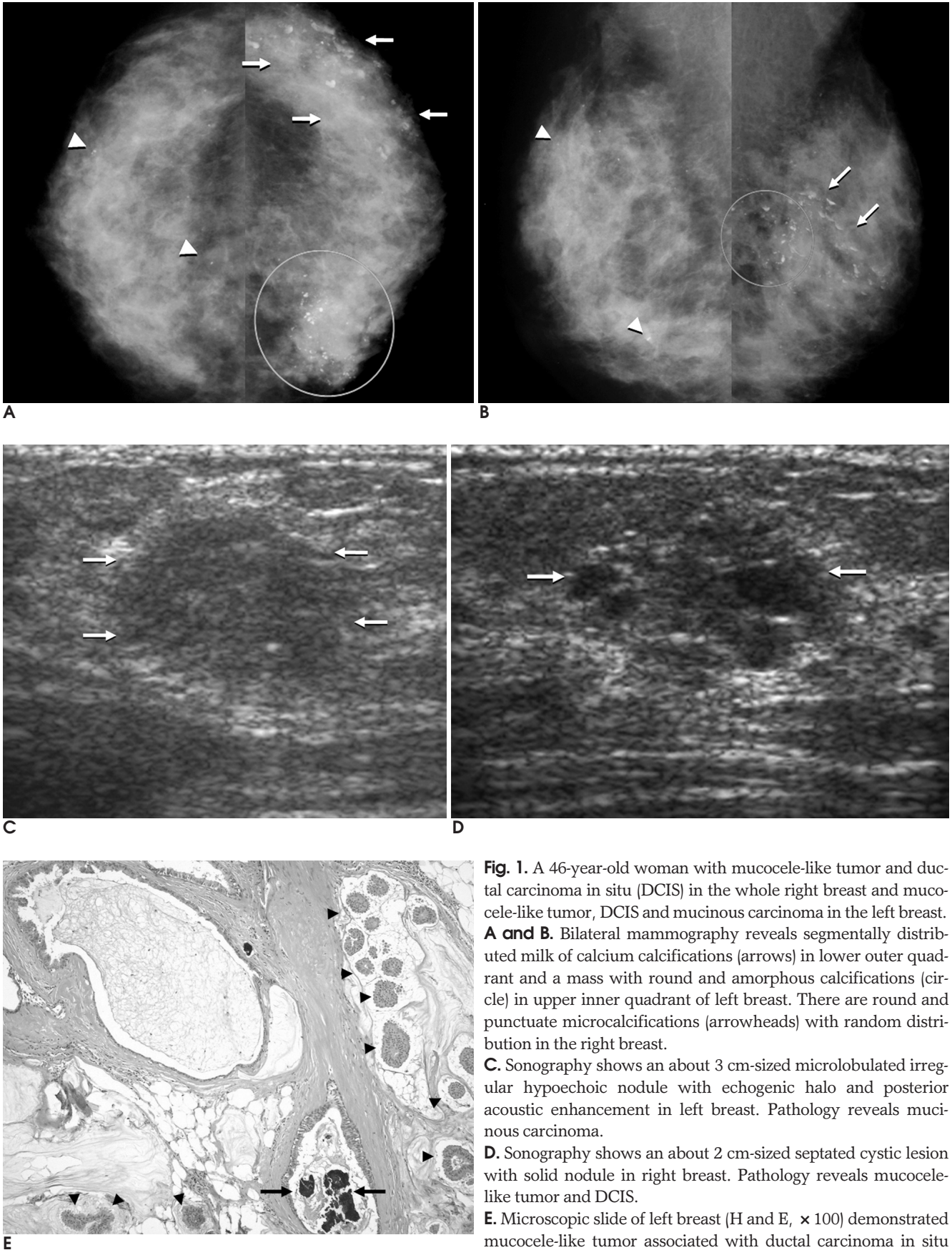
(Figs. 1A and B).

(Fig. 1E).

, P53 C - erb - B2

<sup>1</sup>

<sup>2</sup>



**Fig. 1.** A 46-year-old woman with mucocoele-like tumor and ductal carcinoma in situ (DCIS) in the whole right breast and mucocoele-like tumor, DCIS and mucinous carcinoma in the left breast. **A and B.** Bilateral mammography reveals segmentally distributed milk of calcium calcifications (arrows) in lower outer quadrant and a mass with round and amorphous calcifications (circle) in upper inner quadrant of left breast. There are round and punctuate microcalcifications (arrowheads) with random distribution in the right breast. **C.** Sonography shows an about 3 cm-sized microlobulated irregular hypoechoic nodule with echogenic halo and posterior acoustic enhancement in left breast. Pathology reveals mucinous carcinoma. **D.** Sonography shows an about 2 cm-sized septated cystic lesion with solid nodule in right breast. Pathology reveals mucocoele-like tumor and DCIS. **E.** Microscopic slide of left breast (H and E,  $\times 100$ ) demonstrated mucocoele-like tumor associated with ductal carcinoma in situ and invasive mucinous carcinoma (arrows) (arrowheads, microcalcifications in mucocoele-like tumor).

- (3).
- 가
- (2, 3, 6).
- 40
- (typical or atypical ductal hyperplasia) (2 -
- 5). Hamele - Bena (2) 53 (6).
- 25, 28, 14 (2, 5, 10).
- (cribriform) (2).
- (micropapillary), 14, 5 (2, 10).
- (3, 4).
- Glazebrook Reynolds (6)
- 가 6
- (2, 5, 6). Hamele - Bena (2)
- 53, 19
- 50%, 82%가
- 가
- 46%, 71%
- 가
- Glazebrook
- Reynolds (6) Kim (7)
- (cluster)
- (complex cystic lesion)
- 가
- 가
- 14%
- 가
- (8, 9). Glazebrook Reynolds (6)
- Kim (7)
1. Rosen PP. Mucocoele-like tumors of the breast. *Am J Surg Pathol* 1986;10:464-469
  2. Hamele-Bena D, Cranor ML, Rosen PP. Mammary mucocoele-like lesions: benign and malignant. *Am J Surg Pathol* 1996;20:1081-1085
  3. Ro JY, Sneige N, Sahin AA, Silva EG, del Junco GW, Ayala AG. Mucocoele-like tumor of the breast associated with atypical ductal hyperplasia or mucinous carcinoma: a clinicopathologic study of seven cases. *Arch Pathol Lab Med* 1991;115:137-140
  4. Weaver MG, Abdul-Karim FW, al-Kaisi N. Mucinous lesions of the breast: a pathological continuum. *Pathol Res Pract* 1993;189:873-876
  5. Chinyama CN, Davies JD. Mammary mucinous lesions: congeners, prevalence and important pathological associations. *Histopathology* 1996;29:533-539
  6. Glazebrook K, Reynolds C. Original report. Mucocoele-like tumors of the breast: mammographic and sonographic appearances. *AJR Am J Roentgenol* 2003;180:949-954
  7. Kim HS, Park JM, Ji E-K, Gong G, Ahn S-H. Mucocoele-like tumor of the breast: a case report. *J Korean Radiol Soc* 1999;41:607-609
  8. Chopra S, Evans AJ, Pinder SE, Yeoman LJ, Ellis IO, Elston CW, et al. Pure mucinous breast cancer-mammographic and ultrasound findings. *Clin Radiol* 1996;51:421-424
  9. Conant EF, Dillon RL, Palazzo J, Ehrlich SM, Feig SA. Imaging findings in mucin-containing carcinomas of the breast: correlation with pathologic features. *AJR Am J Roentgenol* 1994;163:821-824
  10. Fisher CJ, Millis RR. A mucocoele-like tumour of the breast associated with both atypical ductal hyperplasia and mucoid carcinoma. *Histopathology* 1992;21:69-71

## **Bilateral Mucocele-like Tumors of the Breast Associated with Ductal Carcinoma In Situ and Mucinous Carcinoma: A Case Report<sup>1</sup>**

Jeong-Hee Sohn, M.D., Hak Hee Kim, M.D., Hee Jung Shin, M.D., Mi-Jung Kim, M.D.<sup>2</sup>,  
Mun Hee Baek, M.D., Dae Bong Kim, M.D.

<sup>1</sup>*Department of Radiology, Asan Medical Center, University of Ulsan, College of Medicine*

<sup>2</sup>*Department of Pathology, Asan Medical Center, University of Ulsan, College of Medicine*

Mucocele-like tumor of the breast is a rare neoplasm and only a few cases of mucocele-like tumor have been reported on in Korea. These lesions were originally considered as being benign when they were first described, but now it is believed they can be both malignant and benign, and it is even possible that they are early lesions of mucinous carcinoma. We describe here both the mammographic and sonographic findings in a patient with bilateral mucocele-like tumors that were associated with ductal carcinoma in situ and mucinous carcinoma.

**Index words :** Breast, neoplasms

Breast neoplasms, sonography

Breast neoplasms, mammography

Address reprint requests to : Hak Hee Kim, M.D., Department of Radiology, Asan Medical Center, University of Ulsan, College of Medicine,  
388-1 Poongnap-dong, Songpa-gu, Seoul 138-736, Korea.  
Tel. 82-2-3010-4390 Fax. 82-2-476-0090 E-mail: hhkim@amc.seoul.kr