

(Aggressive Angiomyxoma):

1

(aggressive angiomyxoma)

1

(aggressive angiomyxoma) T1 - (Fig. 1G, H)
(pelvic diaphragm)

. 20 - 40

가 :
6:1
(1 - 3).
36 - 72%
(3 - 5).

(Fig. 1I, J)
(eosinophilc loose myxoid
(spin -

and collagenous stroma)
dle cell)

가

29 가 16 (vulva
mass) 16

(Fig. 1A)
, 30 × 30 × 10 cm

1883 Virshow가 (soft tissue myxoma -
ta) , 1983 Steeper Rosai가 가

(Fig. 1B) , 가 130 가 (1, 2, 4, 6 - 8).

(Fig. 1C, D) 가 가 가

T1 - (Fig. 1E)
T2 - (Fig. 1F)

(1 - 4, 6). 10 cm 가

가
가

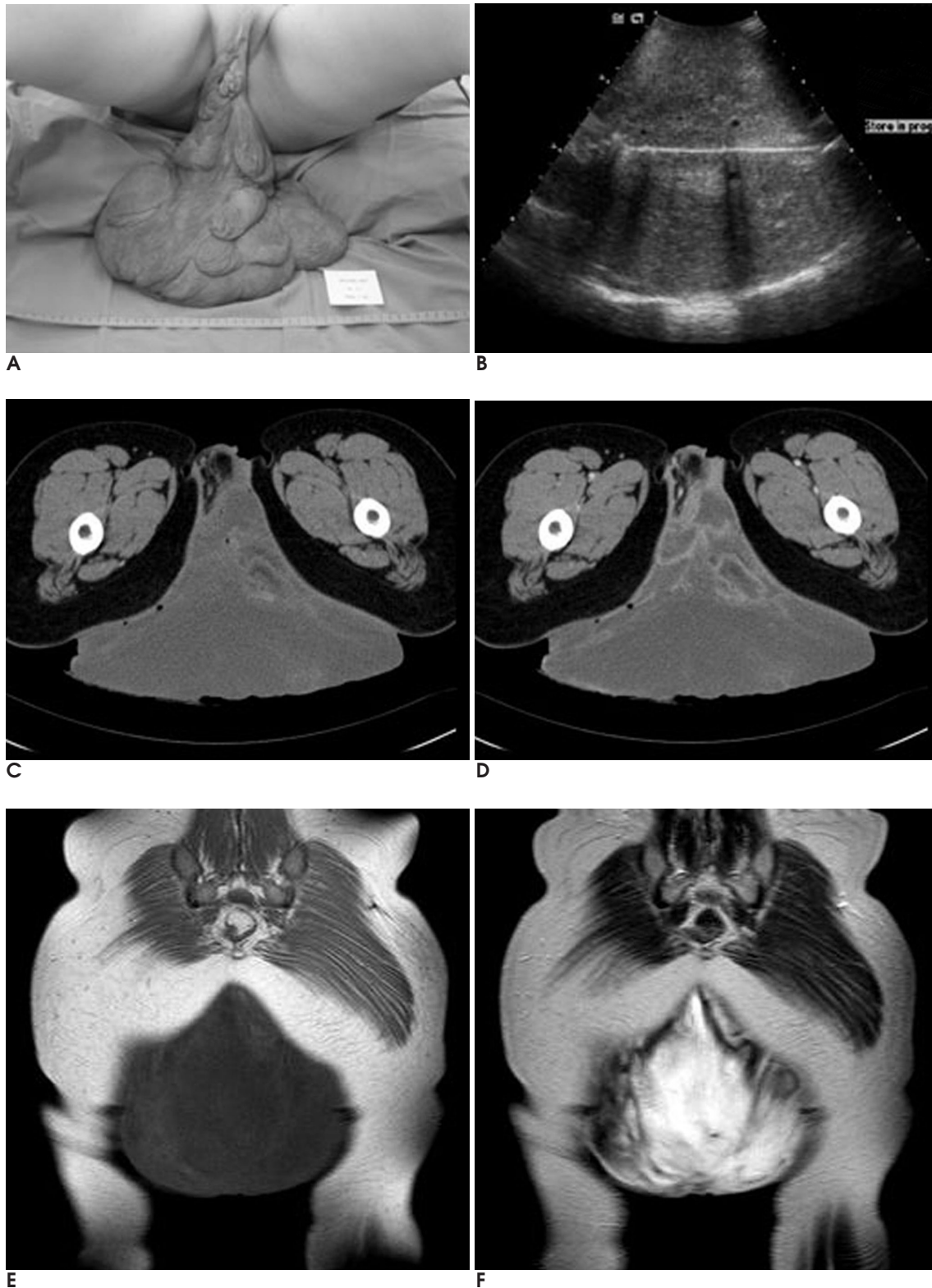


Fig. 1. A 29-year-old woman with huge aggressive angiomyxoma from right vulva.

A. This mass lesion is huge ($30 \times 30 \times 10$ cm), soft, movable, and pedunculated and lobulated contour.

B. An ultrasonogram shows homogenous hypoechoic solid mass with thin septum.

C, D. Pre-enhanced CT (**C**) and enhanced CT (**D**) scans show huge and similar attenuating mass to muscle with internal swirling patterned lesion. In contrast-enhanced scan, internal swirling pattern is more distinct.

E. Coronal T1 weighted spin-echo (TR 400/TE14) MR image shows huge homogenous low signal intensity mass.

F. Coronal T2 weighted fast spin-echo (TR3900/TE90) MR image reveals high signal intensity and swirling pattern with internal low signal intensity.

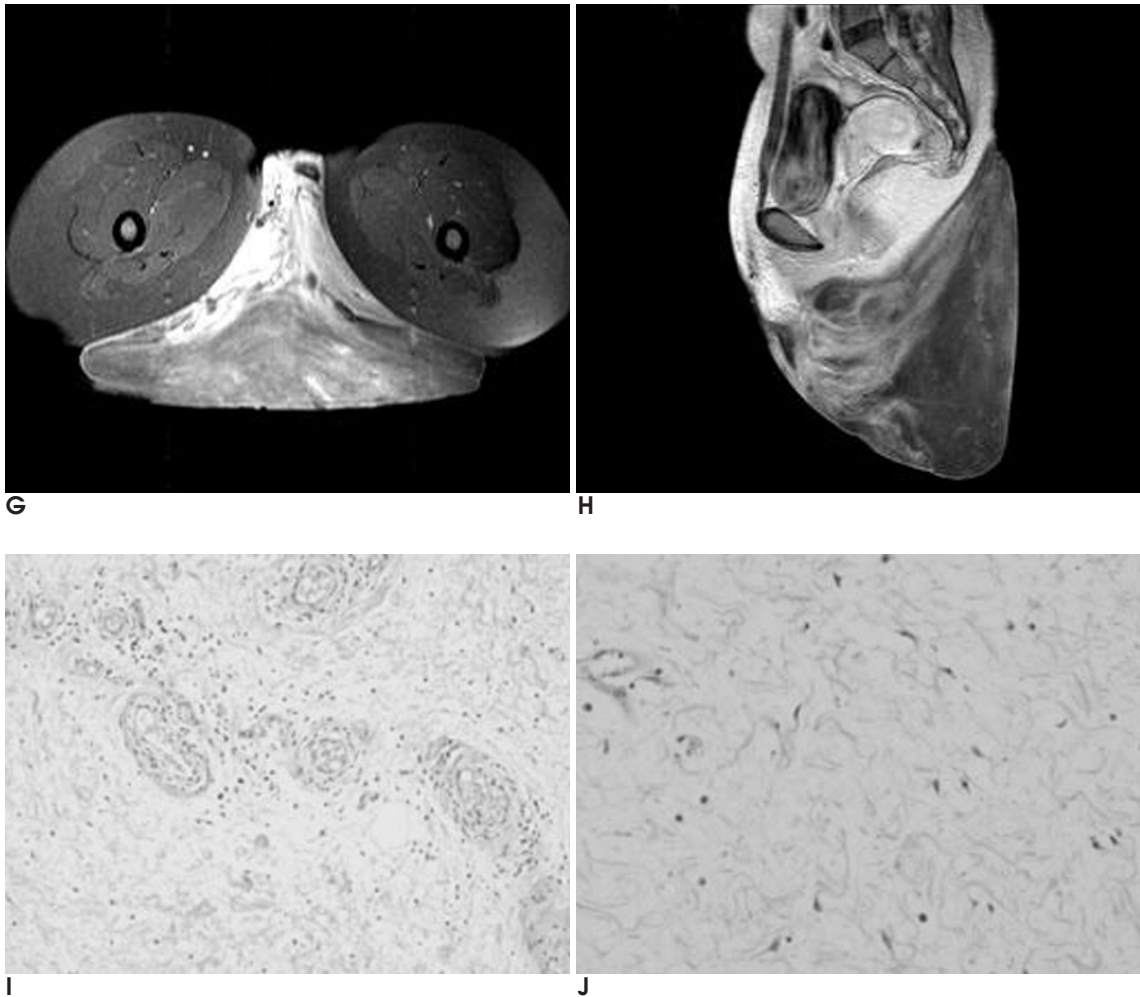


Fig. 1. **G, H.** Gd-enhanced MRI images show heterogeneous enhancement with low signal intensity swirling pattern. **I, J.** Eosinophilic myxoid and collagenous stroma with congested vessels (I \times 100, HE stain). Scattered scanty amount of spindle cell without nuclear atypism or mitosis (J \times 200, HE stain).

(1, 3-5, 7, 9).

가 90% (1, 3, 5, 7, 9).

(1, 4, 5, 9).

(1, 3, 4, 6-8).

가 70%

2 가 (1, 3-7).

가 (1, 3, 8, 9).

T1 - T2 -

가

201

T2 -
가
(1, 3, 9).

1. Behranwala KA, Thomas JM. Aggressive angiomyxoma: a distinct

- clinical entity. *Eur J Surg Oncol* 2003;29:559-563
2. Htwe M, Deppisch LM, Saint-Julien JS. Hormone-dependent, aggressive angiomyxoma of the vulva. *Obstet Gynecol* 1995;86:697-699
 3. Jeyadevan NN, Sohaib SA, Thomas JM, Jeyarajah A, Shepherd JH, Fisher C. Imaging features of aggressive angiomyxoma. *Clin radiol* 2002;58:157-162
 4. Kim B, Sohn WS, Jang KT, Min BS, Kim CM, Kim SJ, et al. Aggressive angiomyxoma of the vagina. *Korean J Obstet Gynecol* 2001;44:1350-1352
 5. Yang YM, Cho YL, Ahn KJ, Kim HJ, Kim IS. Aggressive angiomyxoma at ischiorectal fossa. *Korean J Obstet Gynecol* 2003;46:1567-1570
 6. Fetsch JF, Laskin WB, Lefkowitz M, Kindblom LG, Meis-Kindblom JM. Aggressive angiomyxoma: a clinicopathology study of 29 female patients. *Cancer* 1996;78:79-90
 7. Mascarenhas L, Knaggs J, Clark J, Eliot B. Aggressive angiomyxoma of female pelvis and perineum: case report and literature review. *Am J Obstet Gynecol* 1993;169:555-556
 8. Destian S, Ritchie WG. Aggressive angiomyxoma: CT appearance. *Am J Gastroenterol* 1986;81:711-713
 9. Outwater EK, Marchetto BE, Wagner BJ, Siegelman ES. Aggressive angiomyxoma: findings on CT and MR imaging. *AJR Am J Roentgenol* 1999;172:435-438

J Korean Radiol Soc 2005;52:199 - 202

Aggressive Angiomyxoma in the Vulva: A Case Report¹

Su-Kyoung Jeh, M.D., Young-Mi Ku, M.D., In Yong Whang, M.D., Ki-Tae Kim, M.D.

¹Department of Radiology, Uijeongbu St. Mary's Hospital, The Catholic University of Korea

Aggressive angiomyxoma is a rare benign tumor that originates in the pelvic or perineal organs of women. We report a case of an aggressive angiomyxoma as a huge vulvar mass, and present its clinical and image characteristics with a review of the literatures.

Index words : Pelvis, neoplasms
Computed tomography (CT)
Magnetic resonance (MR)

Address reprint requests to : Young Mi Ku, M.D., Department of Radiology, Uijeongbu St. Mary's Hospital, The Catholic University of Korea, 65-1 kumho-dong, Uijeongbu-city, Kyunggi-do 480-130, Korea.
Tel. 82-31-820-3148 Fax. 82-31-846-3080 E-mail: ymiku@hanmail.net