



가
가 (1).
가
가 (2, 3).
가
가 (Fig. 1D).
가
가 (Fig. 1E).
38
2840 g
15%
가
가 (4).
가
가 (1, 2).
가
가 (3).
3.8 × 1.6 cm
가 (Fig. 1A).
Disse
(sinusoid)
가

(1). 가 (7).
가 가
(4, 6, 7). 가 가 가

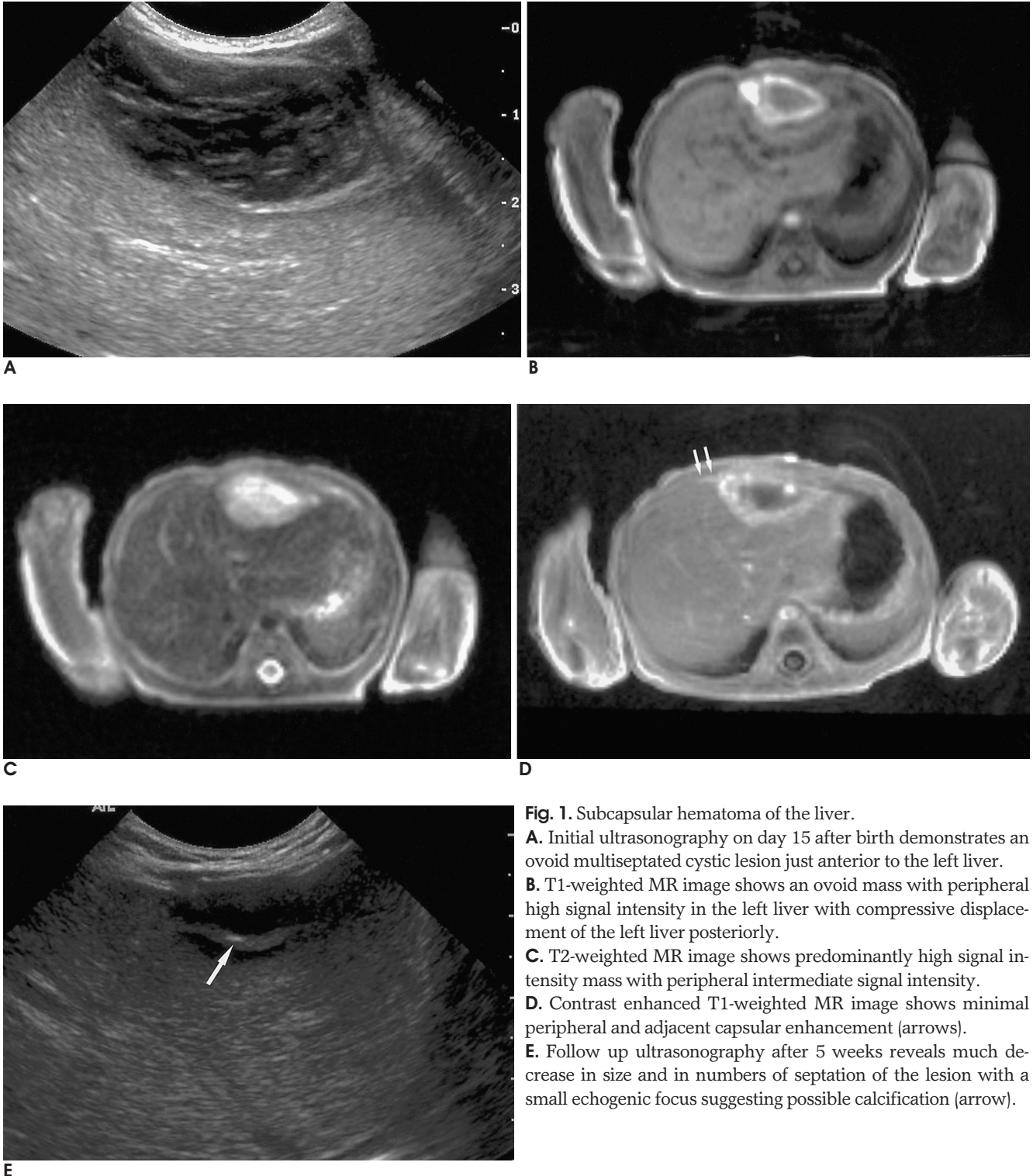


Fig. 1. Subcapsular hematoma of the liver.
A. Initial ultrasonography on day 15 after birth demonstrates an ovoid multiseptated cystic lesion just anterior to the left liver.
B. T1-weighted MR image shows an ovoid mass with peripheral high signal intensity in the left liver with compressive displacement of the left liver posteriorly.
C. T2-weighted MR image shows predominantly high signal intensity mass with peripheral intermediate signal intensity.
D. Contrast enhanced T1-weighted MR image shows minimal peripheral and adjacent capsular enhancement (arrows).
E. Follow up ultrasonography after 5 weeks reveals much decrease in size and in numbers of septation of the lesion with a small echogenic focus suggesting possible calcification (arrow).

가 (2, 3, 8).
가

가
(8, 9).

T1

(10).

T1

T2

. T1

가
가

- hematomas in fetuses and neonatal infants. *Pediatr Dev Pathol* 1999;2:215-220
- Amodio J, Fefferman N, Rivera R, Pinkney L, Strubel N. Idiopathic intraparenchymal hematoma of the liver in a neonate. *Pediatr Radiol* 2004;34: 358-361
 - Son SH, Nam KA, Choi JY, Kim MJ, Seo SS, Kweon JM. One Case of Subcapsular Hematoma with Persistent Neonatal Hyperbilirubinemia. *J Korean Soc Neonatol* 2001;8:145-149
 - French CE, Waldstein G. Subcapsular hemorrhage of the liver in the newborn. *Pediatrics* 1982;69:204-208
 - Ohtani O. The maceration technique in scanning electron microscopy of collagen fiber framework: its application in the study of human livers. *Arch Histol Cytol* 1992;55:225-232
 - Mouratidis B, Antonio G. Sonographic diagnosis of subcapsular liver hematoma mimicking tumor in a neonate. *J Clin Ultrasound* 2000;28:53-57
 - Ryan CA, Finer NN. Subcapsular hematoma of the liver in infants of very low birth weight. *CMAJ* 1987;136:1265-1269
 - Schlesinger AE, Braverman RM, DiPietro MA. Neonate and umbilical venous catheters: Normal appearance, anomalous positions, complications, and potential aid to diagnosis. *AJR Am J Roentgenol* 2003;180:1147-1153
 - Moens E, Dooy JD, Jansens H, Lammens C, Op de Beeck B, Mahieu L. Hepatic abscesses associated with umbilical catheterization in two neonates. *Eur J Pediatr* 2003; 162:406-409
 - Balci NC, Semelka RC, Noone TC, Ascher SM. Acute and subacute liver-related hemorrhage: MRI findings. *Magn Reson Imaging* 1999;17: 207-211

1. Singer DB, Neave C, Oyer CE, Pinar H. Hepatic subcapsular

J Korean Radiol Soc 2005;52:41 - 43

Subcapsular Hematoma of the Liver in a Neonate: Case Report¹

Soo Ah Im, M.D., Gye-Yeon Lim, M.D.

¹Department of Radiology, College of Medicine, The Catholic University of Korea

Subcapsular hematoma of the liver in the neonate is an uncommon clinical presentation, although these tumors are frequently found upon perinatal autopsy. We describe the sonographic and MR findings of a subcapsular hematoma of the liver in a neonate having a clinical history of an inserted umbilical venous catheter, necrotizing enterocolitis and sepsis, and we also include a review of the relevant literature.

Index words : Neonate
Liver
Hematoma
Ultrasonography (US)
Magnetic resonance (MR)

Address reprint requests to : Gye-Yeon Lim, M.D., Department of Radiology, St. Mary's Hospital, College of Medicine, The Catholic University of Korea, 62, Youido-dong, Yongsongpo-gu, Seoul 150-010, Korea.
Tel. 82-2-3779-2168 Fax. 82-2-783-5288 E-mail: shlgly@catholic.ac.kr