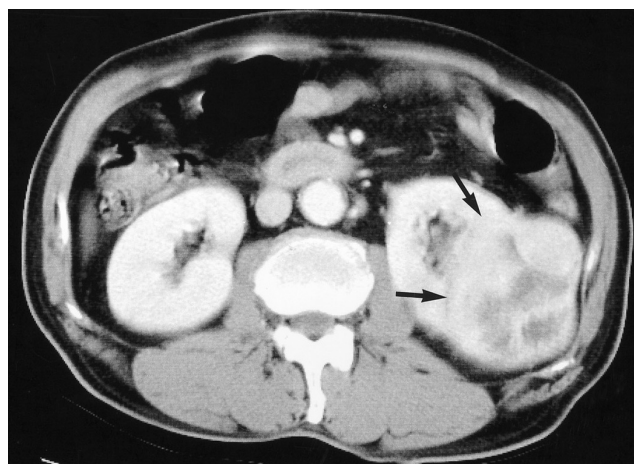




가  
가  
30%  
20 - 30%  
가  
(1).  
(2, 3).  
(2 - 4).  
2  
MR T1  
(Fig. 2C),  
(Fig. 2D),  
T2  
(Fig. 2E).  
가 가  
CT  
CT

65 가 . 1  
2  
T2N0M0 (Fig. 1).  
CT 11  
(erector spinae muscle), (glu -  
teus maximus muscle), (gluteus medius muscle),  
(gluteus minimus muscle), (adductor  
magnus muscle), (adductor brevis muscle),  
(iliopsoas muscle) 40 가  
(Fig. 2A). 가  
5 × 4 cm ,



**Fig. 1.** Preoperative CT scan of renal cell carcinoma in a 63-year-old man.  
CT scan shows a lobuated mass (arrows) with inhomogeneous enhancement in the posterolateral aspect of the left kidney.

<sup>1</sup> 가  
<sup>2</sup> 가

50%

(5).



A



B



C



D



E

**Fig. 2.** Follow up CT, ultrasonography, MR images 2 years after radical nephrectomy.

**A.** CT scan of the pelvis shows six enhancing metastatic masses in right gluteus maximus, gluteus medius, iliopsoas, and left gluteus maximus muscles (arrows).

**B.** Ultrasonography scan of right gluteus maximus muscle shows a well-defined, lobulated hypoechoic mass within the muscle.

**C.** T1-weighted coronal MR image reveals multiple masses (arrows) in pelvic muscles as slightly high signal intensity.

**D.** Fat-suppressed T2-weighted MR image shows multiple hyperintense masses and peritumoral edema.

**E.** Fat-suppressed T1-weighted MR image with contrast enhancement shows homogeneous enhancement of the masses.

(2, 5, 6).

가

(7).

1 - 6%

(5, 7).

가

가

가

(2, 5).

가

(2),

(rectus abdominis muscle), (deltoid muscle),  
(psoas muscle), (intercostal muscle) (5).

30%

가

, Batson 's

plexus

(1).

, 1951 Riches (8) 371

4

, Bennington (9)

523

3

가

(2 - 4),

가 가

Batson 's

s plexus

(1, 10).

Batson 's plexus

Batson 's

s plexus

CT

가

가 가

(4). MR

CT

T1

, T2

1. Scatarige JC, Sheth S, Corl FM, Fishman EK. Patterns of recurrence in renal cell carcinoma: manifestations on helical CT. *AJR Am J Roentgenol* 2001;177:653-658
2. Nabeyama R, Tanaka K, Matsuda S, Iwamoto Y. Multiple intramuscular metastases 15 years after radical nephrectomy in a patient with stage IV renal cell carcinoma. *J Orthop Sci* 2001;6:189-192
3. Munk PL, Gock S, Gee R, Connell DG, Quenville NF. Metastasis of renal cell carcinoma to skeletal muscle. *Skeletal Radiol* 1992;21:56-59
4. Pretorius ES, Fishman EK. Helical CT of skeletal muscle metastases from primary carcinomas. *AJR Am J Roentgenol* 2000;174:401-404
5. Williams JB, Youngberg RA, Bui-Mansfield LT, Pitcher JD. MR imaging of skeletal muscle metastases. *AJR Am J Roentgenol* 1997;168:555-557
6. Herring CL Jr, Harrelson JM, Scully SP. Metastatic carcinoma to skeletal muscle. A report of 15 patients. *Clin Orthop* 1998;355:272-281
7. Magee T, Rosenthal H. Skeletal muscle metastases at sites of documented trauma. *AJR Am J Roentgenol* 2002;178:985-988
8. Riches EW, Griffiths IH, Thackray MA. New growths of the kidney and ureter. *Br J Urol* 1951;23:297-356
9. Bennington JL, Kradjian RM. Site of metastases at autopsy in 523 cases of renal cell carcinoma. In Bennington JL, Kradjian RM. *Renal carcinoma*. Philadelphia: Saunders, 1967:156-179
10. Wahner-Roedler DL, Sebo TJ. Renal cell carcinoma: diagnosis based on metastatic manifestations. *Mayo Clin Proc* 1997;72:935-941

## Multiple Skeletal Muscle Metastases of Renal Cell Carcinoma after Nephrectomy: Case Report<sup>1</sup>

Seung Hyun Cho, M.D., Young Hwan Lee, M.D., Kyung-Jae Jung, M.D.,  
Young Chan Park, M.D., Ho Kyun Kim, M.D., Hun Mo Ryoo, M.D.<sup>2</sup>

<sup>1</sup>*Department of Radiology, School of Medicine, Catholic University of Daegu*

<sup>2</sup>*Department of Internal Medicine, School of Medicine, Catholic University of Daegu*

Renal cell carcinoma is well known for its tendency to metastasize early to the lung, bone, and liver, but skeletal muscle is an extremely unusual site of metastasis. We report here on an unusual case with numerous skeletal muscle metastases in the posterior abdominal wall and buttock 2 years after radical nephrectomy for renal cell carcinoma.

**Index words :** Muscles, neoplasms  
Muscles, abnormalities  
Kidney, neoplasms

Address reprint requests to : Young Hwan Lee, M.D., Department of Radiology, School of Medicine, Catholic University of Daegu,  
3056-6, Daemyung-dong, Nam-gu, Daegu 705-718, Korea.  
Tel. 82-53-650-4329 Fax. 82-53-650-4339 E-mail: yhlee@cu.ac.kr