

(extragastrointestinal stromal tumor, EGIST)

EGIST

(gastrointestinal stromal tumor, GIST)

(Fig. 1A, B).

CD117

(1).

가

가

(1).

(debris)가

(Fig. 1C).

GIST

(extragastrointestinal stromal tumor, EGIST)

가

(2). EGIST

22 cm

10%

19 cm

(2-4).

가

(Fig. 1D).

가 EGIST

1

(vacuolar change)

(epithelioid cell)

(Fig. 1E).

CD117, CD34가

, S-100

Calretinin

(mesothelial marker)

EGIST

50

2

49

가 4

가

CT

25 cm

GIST

EGIST

가

가

가

가

GIST

가

가

가

가 가

(2, 5, 6). Reith

(2)

EGIST 48

, 40

, 8 가

1

2

3

2004 7 5

2004 10 11

GIST
EGIST
EGIST
EGIST

GIST
가

(2, 7).

EGIST GIST 37가

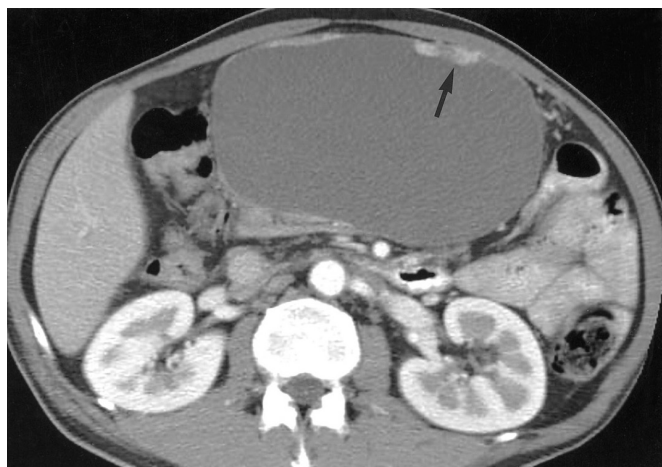
GIST

(microscopic cyst)

가

가

GIST



A



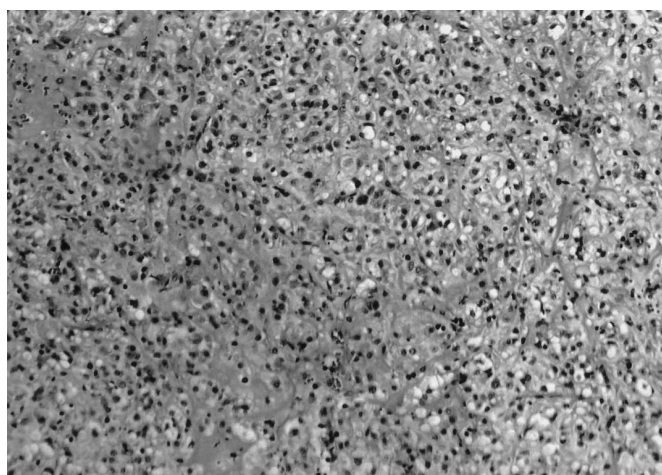
B



C



D



E

Fig. 1. A 49-year-old man presented with a palpable abdominal mass.

A. Enhanced CT scan shows a large cystic mass in the omentum with an enhancing solid component (arrow) at the anterior wall.
B. Enhanced CT scan obtained at the lower level than A shows enhancing solid portions (arrows) and multiple thick septa in the cystic mass.

C. US shows a septated cystic mass with internal debris.

D. Resected gross specimen shows multilocular cysts containing hemorrhagic component (asterisk). Note thick septa (small arrows) and solid components (arrow).

E. Microscopic examination shows sheets of dispersed epithelioid cells with focal vacuolar changes. (H & E, $\times 100$).

(hyalinization) GIST
(eosinophilic stromal globules) skeinoid
fiber가 (2). skeinoid fiber
GIST
, 가
(cellularity)
(vascularity)
(8, 9). Kim (9) EGIST 8
EGIST GIST
(10) EGIST
가
EGIST 가
EGIST GIST
GIST
가
가
,
, , 가
,
가
EGIST 가
가
EGIST
EGIST

1. Miettinen M, Lasota J. Gastrointestinal stromal tumors-definition, clinical, histological, immunohistochemical, and molecular genetic features and differential diagnosis. *Virchows Arch* 2001;438:1-12
2. Reith JD, Goldblum JR, Lyles RH, Weiss SW. Extragastrintestinal (soft tissue) stromal tumors: an analysis of 48 cases with emphasis on histologic predictors of outcome. *Mod Pathol* 2000;13:577-585
3. Erlandson RA, Klimstra DS, Woodruff JM. Subclassification of gastrointestinal stromal tumors based on evaluation by electron microscopy and immunohistochemistry. *Ultrastruct Pathol* 1996;20:373-393
4. Pizzimbono CA, Higa E, Wise L. Leiomyoblastoma of the lesser sac: case report and review of the literature. *Am J Surg* 1973;39:692-699
5. Fletcher CD, Berman JJ, Corless C, Gorstein F, Lasota J, Longley BJ, et al. Diagnosis of gastrointestinal stromal tumors: a consensus approach. *Hum Pathol* 2002;33:459-465
6. Goldblum JR, Appelman HD. Stromal tumors of the duodenum. A histologic and immunohistochemical study of 20 cases. *Am J Surg Pathol* 1995;19:71-80
7. Levy AD, Remotti HE, Thompson WM, Sobin LH, Miettinen M. Gastrointestinal stromal tumors: radiologic features with pathologic correlation. *Radiographics* 2003;23:283-304
8. Chang CY, Wang HP, Mao TL, Hu RH, Yang PM, Lai MY, et al. Unusual sonographic appearance of a gastrointestinal stromal tumor presenting as a large multilocular cystic mass. *J Clin Ultrasound* 2004;32:200-203
9. Kim HC, Lee JM, Kim SH, Kim KW, Lee M, Kim YJ, et al. Primary gastrointestinal stromal tumors in the omentum and mesentery: CT findings and pathologic correlations. *AJR Am J Roentgenol* 2004;182:1463-1467
10. 2002;47:631-634

Extragastrointestinal Stromal Tumor Presenting a Large Multilocular Cystic Mass Arising from the Greater Omentum: A Case Report¹

Eun-Sook Ko, M.D., Kyungsoo Bae, M.D., Kyung-Nyeo Jeon, M.D., Jae Soo Kim, M.D.,
Jin Jong You, M.D., Hun Kyu Ryeom, M.D.², Jongsil Lee, M.D.³

¹*Department of Diagnostic Radiology, Gyeongsang National University College of Medicine*

²*Department of Diagnostic Radiology, Kyungpook National University College of Medicine*

³*Department of Pathology, Gyeongsang National University College of Medicine*

Extragastrointestinal stromal tumor (EGIST) has been reported to occur only rarely, and the cases of this disease appearing as cystic masses are also known to be very infrequent. Along with a review of the related articles, we report here on a case of EGIST arising from the omentum that was seen as a multiloculated large cystic mass with multiple thick septa and a solid component.

Index words : Omentum, neoplasms
Abdomen, CT
Abdomen, US

Address reprint requests to : Kyungsoo Bae, M.D., Department of Diagnostic Radiology, Gyeongsang National University Hospital,
90 Chilam-dong, Jinju 660-702, Korea.
Tel. 82-55-750-8786 Fax. 82-55-758-1568 E-mail: ksbae@nongae.gsnu.ac.kr