



CT

1

T1 CT

1

CT

(Fig. 1B).

4 - 8%

가 (1, 2)

가 (3)

1995

180 가

Gollub Prowda

가 1999 6

(4)

(5).

CT MR

index가 50% (melanoma marker)

S - protein , HMV45

Ki - 67

, Vimentin (Fig. 2A, B).

58 가 4

9 , ,

가 10

1 3 , 1

CEA

1.29 ng/ml, CA19 - 9 0.21 U/ml

3 cm

MRI

0.1 - 0.5%

(6). 1906 Baur

180 가 (4) CT

. 1963 De La Pava

4%

(1). Ohashi

7.7%

melanocyte가

(2).

48%

가 , ,

(3). Kato

가 (Fig. 1A).

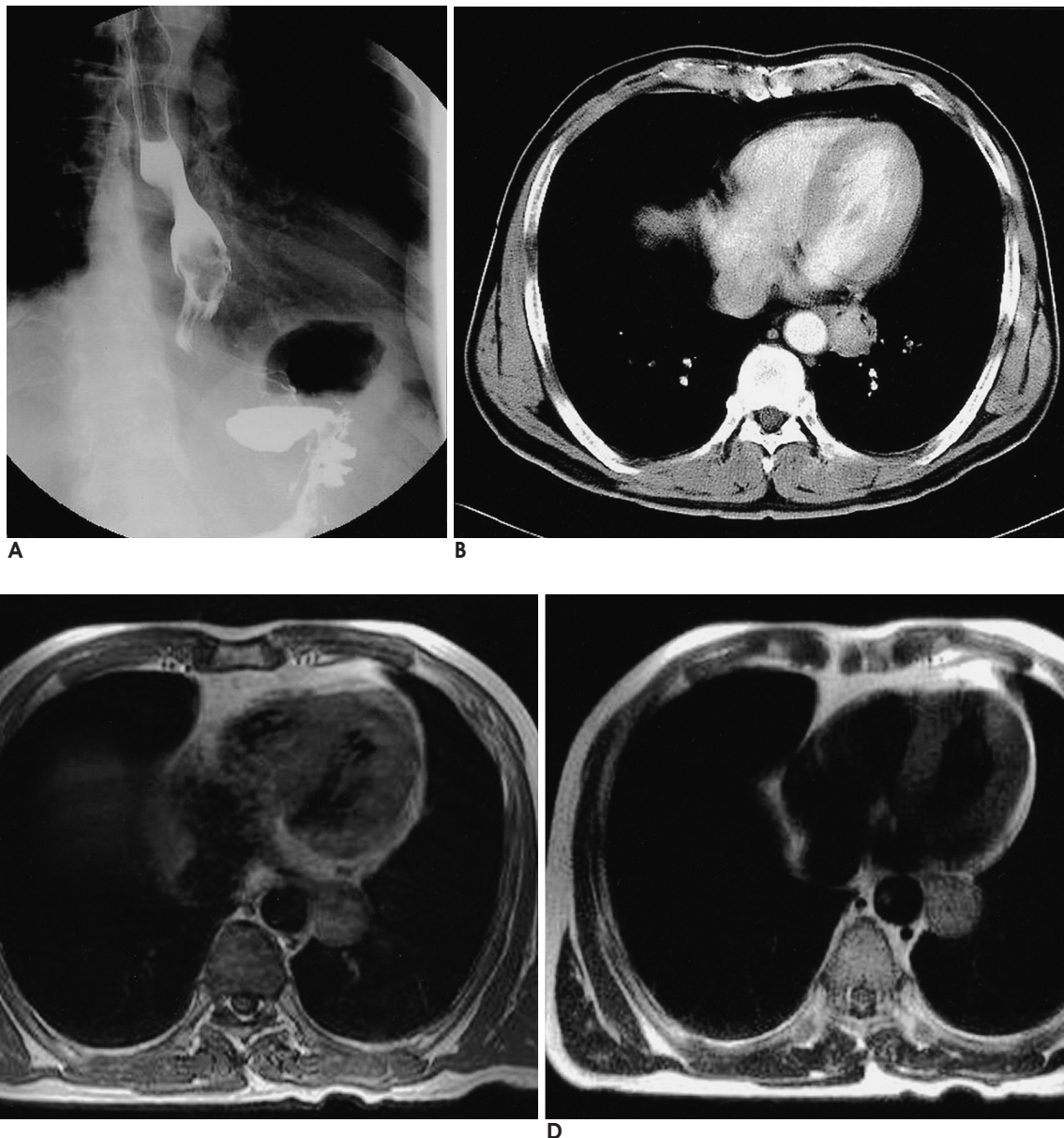


Fig. 1. A 58-year-old man with primary malignant melanocytic melanoma in esophagus.
A. Barium esophagogram shows intraluminal polypoid mass in the distal esophagus with linear surface collection, which representing barium trapped between lobulations. There is no obstruction sign.
B. Contrast-enhanced chest CT scan demonstrates relatively well enhancing intraluminal mass.
C. T1-weighted image shows the mass is high signal intensity compared with muscle.
D. The mass appears high signal intensity on T2-weighted image.

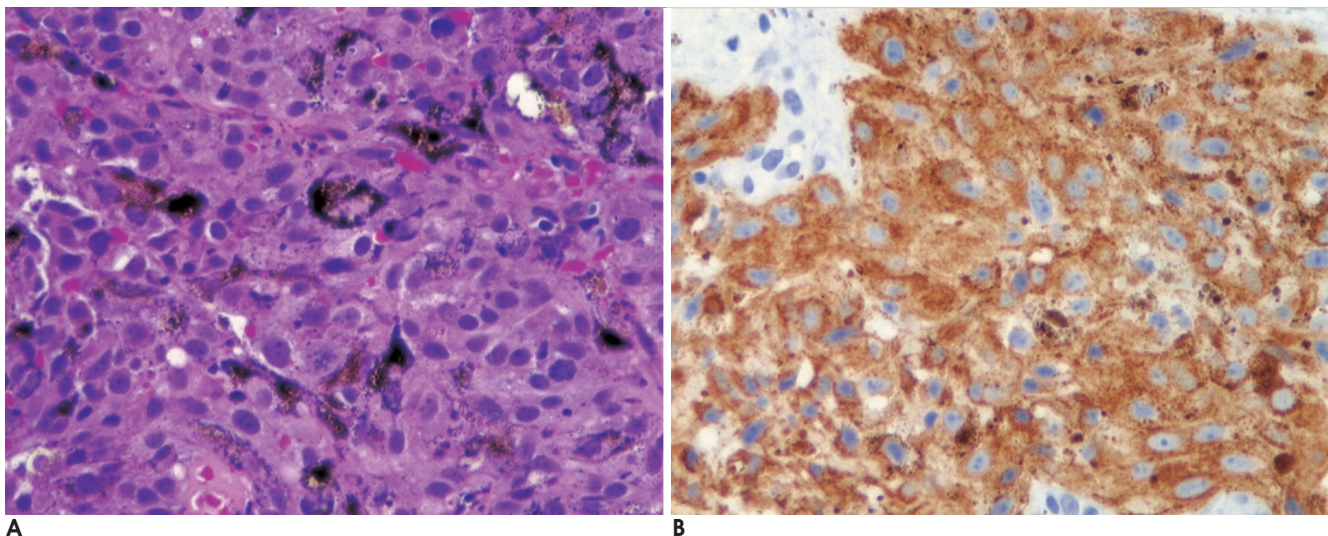


Fig. 2. A. Pleomorphic tumor cells with abundant mitoses and coarse melanin pigment granules are shown H & E, $\times 400$.
B. The majority of tumor cells are positive for melanoma antigen, HMB-45 ($\times 400$).

가 . Allen
 Spitz
 (9): 1)
 2)
 3) activity area
 9.4%
 (10).
 melanocyte 가
 4) junctional
 40%
 (11).
 (spindle cell carcinoma),
 (leiomyosarcoma), (carcinoid)
 (leiomyoma), (squamous
 (fibrovascular polyp)
 papilloma),
 CT
 가 . MR
 T1 T1
 . T2
 MR T1

1. De La Pava S, Nigogosyan G, Pickren JW, Cabrera A. Melanosis of the esophagus. *Cancer* 1963;16:48-50
2. Ohashi K, Kato Y, Kanno J, Kasuga T. Melanocytes and melanosis of the esophagus in Japanese subjects-analysis of factors effecting their increase. *Virchows Arch A Pathol Anat Histopathol* 1990;41:137-143
3. Wood CB, Wood RA. Metastatic malignant melanoma of the esophagus. *Am J Dig Dis* 1975;20:786-789
4. Joob AW, Haines GK 3rd, Kies MS, Shields TW. Primary malignant melanoma of the esophagus. *Ann Thorac Surg* 1995;60:217-222
5. Gollub MJ, Prowda JC. Primary melanoma of the esophagus: radiologic and clinical findings in six patients. *Radiology* 1999;213:97-100
6. Caldwell CB, Bains MS, Burt M. Unusual malignant neoplasms of the esophagus. Oat cell carcinoma, melanoma and sarcoma. *J Thorac Cardiovasc Surg* 1991; 101:100-107
7. Joob AW, Haines GK 3rd, Kies MS, Shields TW. Primary malignant melanoma of the esophagus. *Ann Thorac Surg* 1995;60:217-222
8. Chalkiadakis G, Wihlm JM, Morand G, Weill-Bousson M, Witz JP. Primary malignant melanoma of the esophagus. *Ann Thorac Surg* 1985;39:472-475
9. Allen AC, Spitz S. Malignant melanoma: a clinicopathologic analysis of the criteria for diagnosis and prognosis. *Cancer* 1953;6:1-45
10. DeMatos P, Wolfe WG, Shea CR, Prieto VG, Seigler HF. Primary malignant melanoma of the esophagus. *J Surg Oncol* 1997;66:201-206
11. Taniyama K, Suzuki H, Sakuramachi S, Toyoda T, Matsuda M, Tahara E. Amelanotic malignant melanoma of the esophagus: case report and review of the literature. *Jpn J Clin Oncol* 1990;20:286-295

Primary Malignant Melanoma of the Esophagus: Spiral CT and MR Findings: Case Report¹

Su Young Kim, M.D., Mi Young Kim, M.D., Yoon Joon Hwang, M.D., Jung Wook Seo, M.D.,
Yoon Hee Han, M.D., Yong Hoon Kim, M.D., Soon Ju Cha, M.D., Gham Hur, M.D.

¹Department of Radiology, College of Medicine, Inje University, Ilsan Paik Hospital

Primary malignant melanoma of the esophagus is extremely rare, but must be included in the differential diagnosis of polypoid esophageal mass, when such a lesion is observed on radiological examination. We report here a case of primary malignant melanoma in the esophagus that was noted to have strong enhancement on CT and high signal intensity on the T1 weighted MR image.

Index words : Esophagus, neoplasms
Melanoma
Esophagus, CT
Esophagus, MR

Address reprint requests to : Su Young Kim, M.D., Department of Radiology, Ilsan Paik Hospital, Inje University School of Medicine
2240, DaeHwa-dong, Ilsan-gu, GoYang-si, Kyunggi-do, 411-410, Korea.
Tel. 82-31-910-7397 Fax. 82-31-910-7369 E-mail: sykim@ilsanpaik.ac.kr