

# PET Marchiafava - Bignami : 1

Marchiafava - Bignami 가  
, MRI . FDG PET  
1 . FDG PET MBD

Marchiafava - Bignami ( MBD)  
,  
(demyelination) (axon)  
(1).  
MRI  
가 . MBD CT MRI  
(2 - 6), [<sup>18</sup>F] - 2 - fluoro -  
2 - deoxy - D - glucose positron emission tomography ( FDG PET)  
1 (2),  
1

FDG PET  
가 ,  
1D). 4 MRI T2  
가 가 ,  
(Fig. 1C).  
B 가  
11 . 1

Marchiafava - Bignami  
가 가  
(confusion),  
62 가 4 ,  
(dysarthria),  
10  
3  
(1). MBD MRI  
T2  
가 , T1  
T2  
(2 - 6). MRI  
MBD  
57  
mg/dl 가  
MRI T1  
, T2  
가가 (Fig. 1A, B). 2  
MBD MRI T2  
가

1  
2003 2003 7 21 2003 10 10  
, FDG PET  
, ,

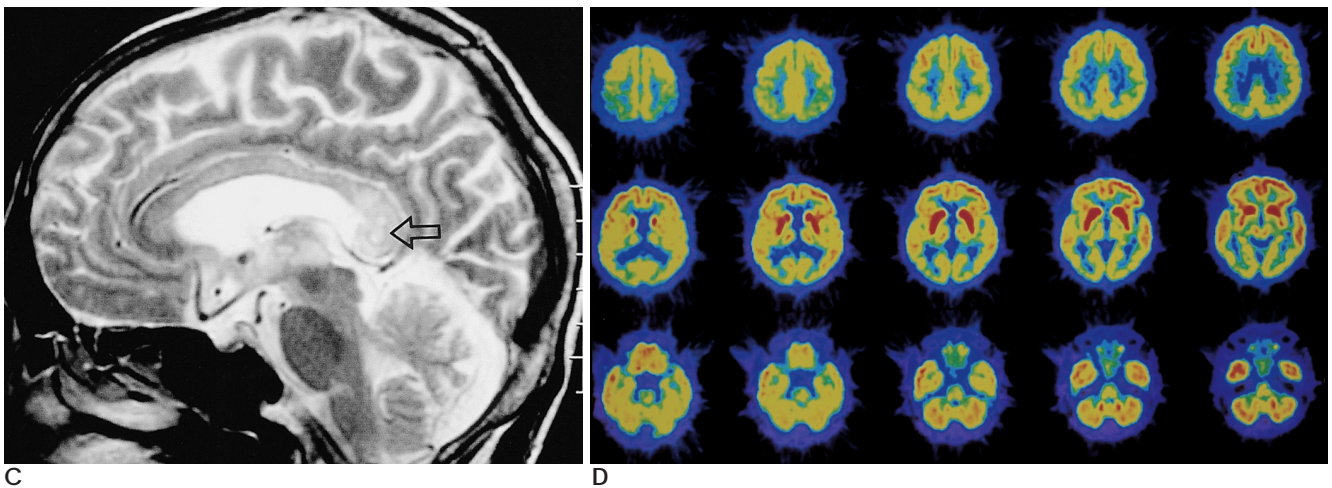
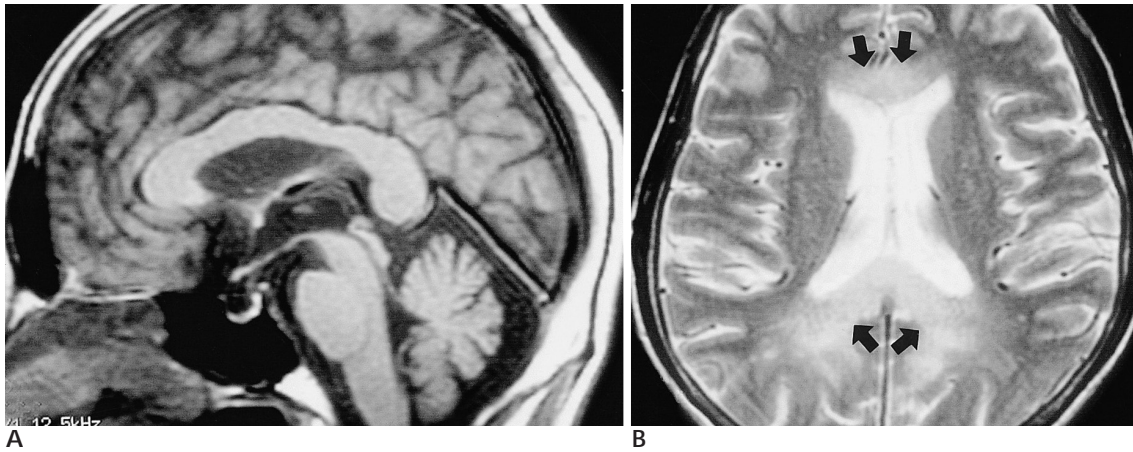


Fig. 1. A 62-year-old man with Marchiafava-Bignami disease.

A, B. Sagittal T1-weighted and axial T2-weighted MRI shows diffuse swelling of entire corpus callosum with high signal intensity in B (arrows).

C. Sagittal T2-weighted image 4 weeks later shows generalized reduction of high signal intensity from the corpus callosum, with areas of focal areas of presumed cystic necrosis in the splenium (open arrow).

D. FDG PET demonstrates diffusely reduced metabolism in the whole brain cortex and strongly decreased metabolism in the thalamus.

FDG PET

(2).

MRI

FDG PET

B

FDG PET

가

가

가

Kazunari (2)

가

MBD

가

FDG PET MBD

- Victor M, Ropper AH. *Principle of neurology*. 7th ed. NY: Mcgraw-Hill, 2001;1226-1227
- Ishii K, Ikerjiri Y, Sasaki M, Kitagaki H, Mori E. Regional cerebral glucose metabolism and blood flow in a patient with Marchiafava-Bignami disease. *AJNR Am J Neuroradiol* 1999;20:1249-1251
- Chang KH, Cha SH, Han MH, Park SH, Nah DL, Hong JH. Marchiafava-Bignami disease: serial changes in corpus callosum in MRI. *Neuroradiology* 1992; 34:480-482
- Gass A, Birtsch G, Olster M, Schwartz A, Hennerici MG. Marchiafava-Bignami Disease: reversibility of neuroimaging abnormality. *J Comput Assist Tomogr* 1998;22:503-504
- Caparros-Lefebvre D, Pruvo JP, Josien E, Pertuzon B, Clarisse J, Petit H. Marchiafava-Bignami disease: use of contrast media in CT

and MRI. *Neuroradiology* 1994;36:509-511  
6. Humbert T, De Guilhemier P, Maktouf C, Grasset G, Lopez FM,  
Chabrand P. Marchiafava-Bignami disease. A case studied by

structural and functional brain imaging. *Eur Arch Psychiatry Clin  
Neurosci* 1992;242:69-71

## **Marchiafava-Bignami Disease with Abnormal PET Findings: Case Report<sup>1</sup>**

Hyung Soo Kim, M.D.

<sup>1</sup>*Department of Radiology, Wonkwang University College of Medicine*

We report the FDG PET findings in a patient with Marchiafava-Bignami disease (MBD) in whom there was diffusely reduced metabolism in the whole brain cortex and strongly decreased metabolism in the thalami. The use of FDG PET helps provide an understanding of the neurologic manifestations and prognosis of MBD.

**Index words :** Alcoholism  
Brain, metabolism  
Brain, abnormalities

Address reprint requests to : Hyung Soo Kim, M.D., Department of Radiology, Wonkwang University, Gunpo Hospital,  
1126-1 Sanbon-dong, Gunpo-si Gyeonggi-do, 435-040, Korea.  
Tel. 82-31-390-2598 Fax. 82-31-390-2854 E-mail: khtvic@yahoo.co.kr