

:
 :
 7 , 1 45 12 , 4.7
 . , ,
 가 , 가
 : 7 가
 15 - 25 mm .
 2 - 9 mm 1 - 7 .
 . 2 , 2 ,
 4 .
 :
 .

, 가 15 - 20% Mountainview, CA, U.S.A.) ATL HDI 5000 (Advanced Technology Laboratories, Bothell, WA) 7 MHz 5 - 12 MHz
 가 . , .

(1 - 3).

, , (internal small cysts) .

가 . 가

1999 1 2002 7
 45 7
 1 . 7
 12 1 30 . 1
 4.7 . 7 2 , 5 . 가
 Acuson 123XP/10 (Acuson,

(Fig. 1 - 3).

15 -

20 mm가 5 , 20 - 25 mm가 2 .
 7 4 5 mm ,

:

3 6-9 mm . 5 가 6 3B) 1 (Fig. 2B). 가 2
 (Fig. 2), 7 가 1 (Fig. 3), (Table 1).
 7 (Fig. , 가 (Fig. 2)가 2

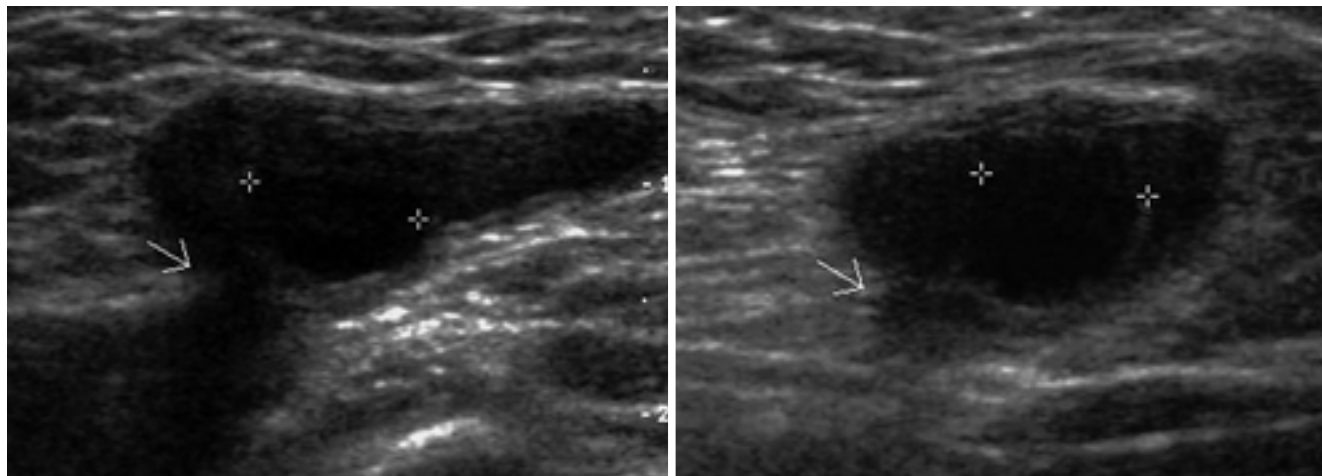


Fig. 1. Longitudinal (A) and transverse (B) scans of left groin in a 3-month-old girl show a heterogeneous hypoechoic mass with 7 mm diameter of unilocular cyst, which is continuously extending from the inguinal canal (arrow).

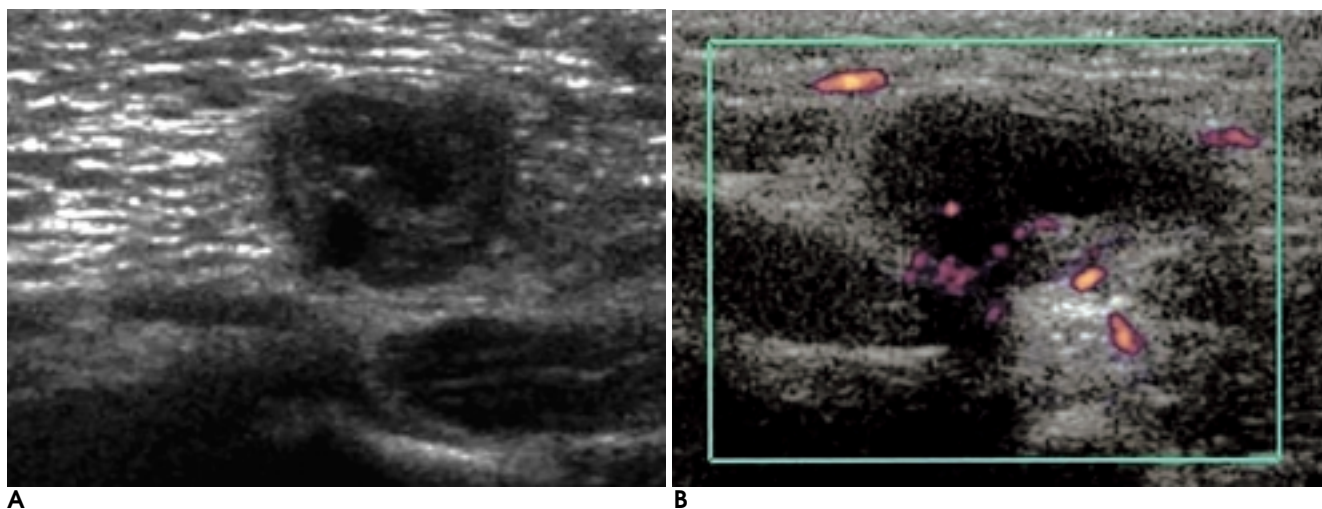
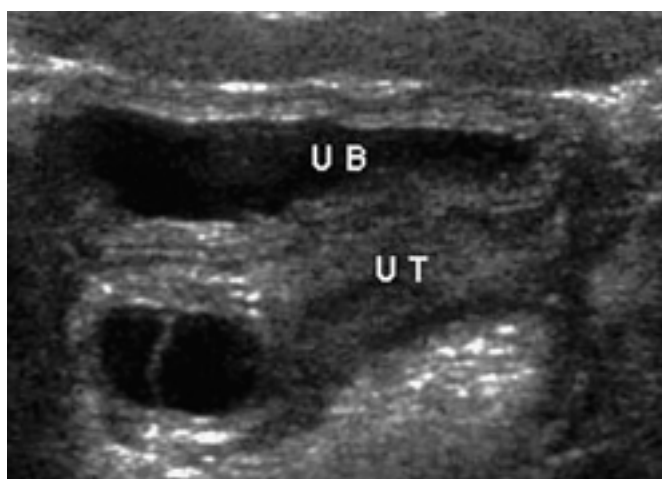


Fig. 2. Transverse (A) scan of left groin in a 1-month-old girl shows an oval-shaped heterogeneous hypoechoic mass with multiple internal small follicular cysts.
B. Blood flow is noted near the inguinal canal with little flow in mass, which was confirmed as incarceration of the herniated ovary.



C. The right ovary with follicular cysts is demonstrated on transverse scan of the pelvis. UB = Urinary bladder. UT = Uterus.

(Fig. 3C)가 4

가 가 (Fig. 2D).

S

2

S

7

가

가

71%
(mesonephric body)

2

3

(processus vaginalis),

(canal of Nuck)

(gubernaculum)

80 - 90%

1

가

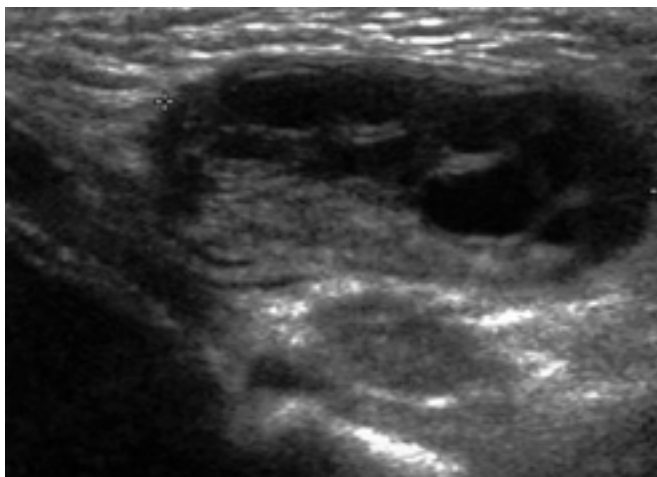
가

(4 - 6).

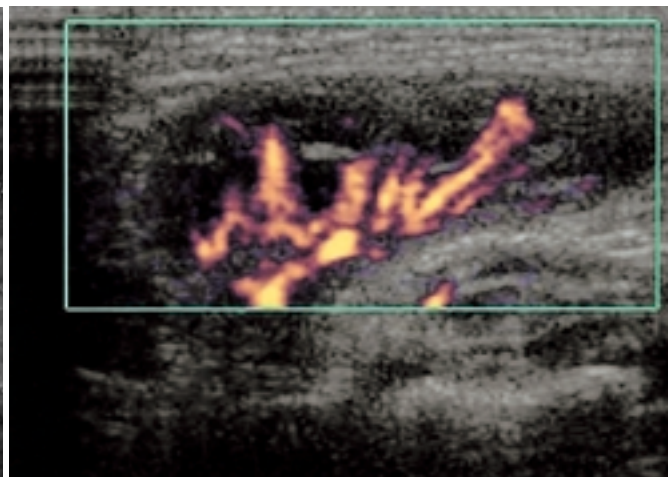
Table 1. US Findings of Inguinal Herniation of the Ovary

US Findings		No. of cases (n = 7)
Echo texture	Heterogeneous hypoechoic	7
Shape	Oval	7
Margin	Well-demarcated	7
Size	15 - 20 mm	5
	20 - 25 mm	2
Internal small cysts	Diameter	5 mm
		6 - 9 mm
	Number	5
		7

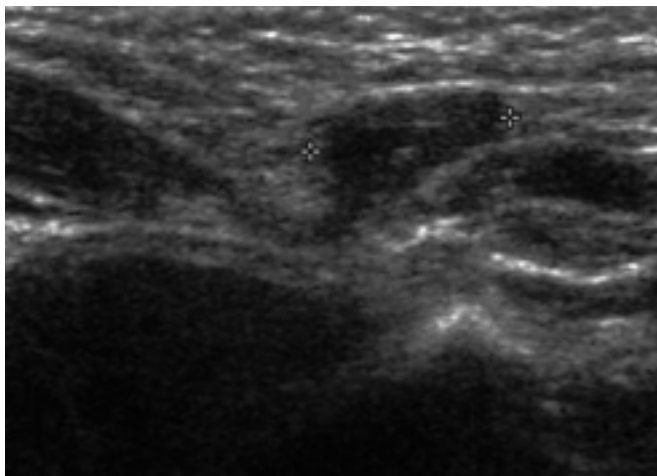
US : Ultrasonography



A



B



C

Fig. 3. Longitudinal (A) scan of the left groin in a 42-day-old girl demonstrates an oval shaped heterogeneous hypoechoic lesion with multiple internal small cysts, representing follicular cysts. B. Color Doppler study shows prominent flow signals in the mass. C. The longitudinal scan of the right groin shows a heterogeneous hypoechoic mass, which was confirmed as inguinal hernia with sigmoid mesocolon.

:

80% (7) 1 - 7 mm 19% 45 7 (16%)
 (8). 가 (9). 2 (29%) 2
 1 가 1 - 3
 7 가 가

. Goske (9) 2
 , Munden

(2) 3
 1.5 - 2 cm

15 - 25 mm 가
 (2).

가
 (10) 1
 3 × 2 × 2 cm
 1 - 2
 14 - 23%
 15 -

20% 가 (2). Merriman (11)
 71 82%

1. George EK, Oudesluys-Murphy AM, Madern GC, Cleyndert P, Blomious JG. Inguinal hernias containing the uterus, fallopian tube and ovary in premature female infants. *J Pediatr* 2000;136(5):696-8
2. Munden M, McEniff N, Mulvihill D. Sonographic investigation of female infants with inguinal masses. *Clin Radiol* 1995;50:696-698
3. Boley SJ, Cahn D, Lauer T, Weinberg G, Kleinhaus S. The irreducible ovary: a true emergency. *J Pediatr Surg* 1991;26:1035-1038
4. Bradshaw KD, Carr BR. Ovarian and tubal inguinal hernia. *Obstet Gynecol* 1986;68(suppl 3):50-52
5. Synder WH Jr, Greaney EM Jr. Inguinal hernias. In Mustard WT, Ravitch MM, Snyder WH Jr, et al. *Pediatric Surgery*, 2nd. Chicago: Yearbook Medical Publishers. 1969;692-707
6. Rosenberg HK, Sherman NH, Tarry WF, Duckett JW, Snyder HM. Mayer-Rokitansky-Kuster-Huser syndrome: US aid to diagnosis. *Radiology* 1986;161:815-819
7. Cohen HL, Shapiro MA, Mandel FS, Shapiro ML. Normal ovaries in neonates and infants: a sonographic study of 77 patients 1 day to 24 months old. *AJR Am J Roentgenol* 1993;160:583-586
8. Simkins CS. Development of the human ovary from birth to sexual maturity. *Am J Anat* 1932;51:465-504
9. Goske MJ, Emmens RW, Rabinowits R. Inguinal ovaries in children demonstrated by high resolution real-time ultrasound. *Radiology* 1984;151:635-636
10. , , , 1989;8:192-194
11. Merriman TE, Auldish AW. Ovarian torsion in inguinal hernias. *Pediatr Surg Int* 2000;16:383-385

Sonographic Findings of Inguinal Herniation of the Ovary¹

Yoon Kyung Kim, M.D., Sun Wha Lee, M.D.

¹*Department of Radiology, College of Medicine, Ewha Womans University*

Purpose: To describe the sonographic findings of inguinal herniation of the ovary.

Materials and Methods: Forty-five girls aged 1 - 12 (mean, 4.7) months with a groin mass underwent sonographic examination, and in seven of the 45, inguinal herniation of the ovary was detected, and confirmed at surgery. Gray-scale and color Doppler sonographic examinations were performed to evaluate the size, echo pattern, and blood flow of the mass. Sonography of the pelvis and contralateral groin was also performed.

Results: In all seven cases, sonography revealed an oval-shaped complex mass 15 - 25 mm in maximal diameter and composed of heterogeneous hypoechoic portions and one to seven small internal cysts, each 2 - 9 mm in diameter. Blood flow was observed in all cases, though was subtly decreased in one. In two there was associated herniation of the salpinx, and in two others, incarceration. In four, contralateral inguinal hernia was present.

Conclusion: Sonographic findings of an oval-shaped heterogeneous hypoechoic mass with internal small cysts, present in the groin, indicate inguinal herniation of the ovary.

Index words : Inguinal hernia, US
Ovary, US

Address reprint requests to : Sun Wha Lee, M.D., Department of Radiology, Ewha Womans University Mokdong Hospital
911-1 Mokdong, Yangcheon-gu, Seoul 158-710, Korea.
Tel. 82-2-650-5173 Fax. 82-2-650-5302 E-mail: sonic323@mm.ewha.ac.kr