



Zuckermandl
가

Zuckermandl
1

90%
, 10%

(Fig. 1B),
(cystic degeneration)

(Fig. 1C).

가
(upper cervical region)
(sympathetic chain)
(1, 2).

Zuckermandl

CT

(1).

(malignant gas -
trointestinal stromal tumor)

(1),

9 × 8.5 cm
(Fig. 1D)

가 5 mm

CT)

S - 100

가

(pleo -
morphic)

(Fig. 1E).

(neurosecretory granules) 가
(Fig. 1F).

CT

33

가

CT

CT

9 × 8.5 cm
(fluid - fluid level)

(Fig. 1A, B).

(neural
crest)

(1, 2).

(pheochromoblast)

2003 6 2 2003 7 31

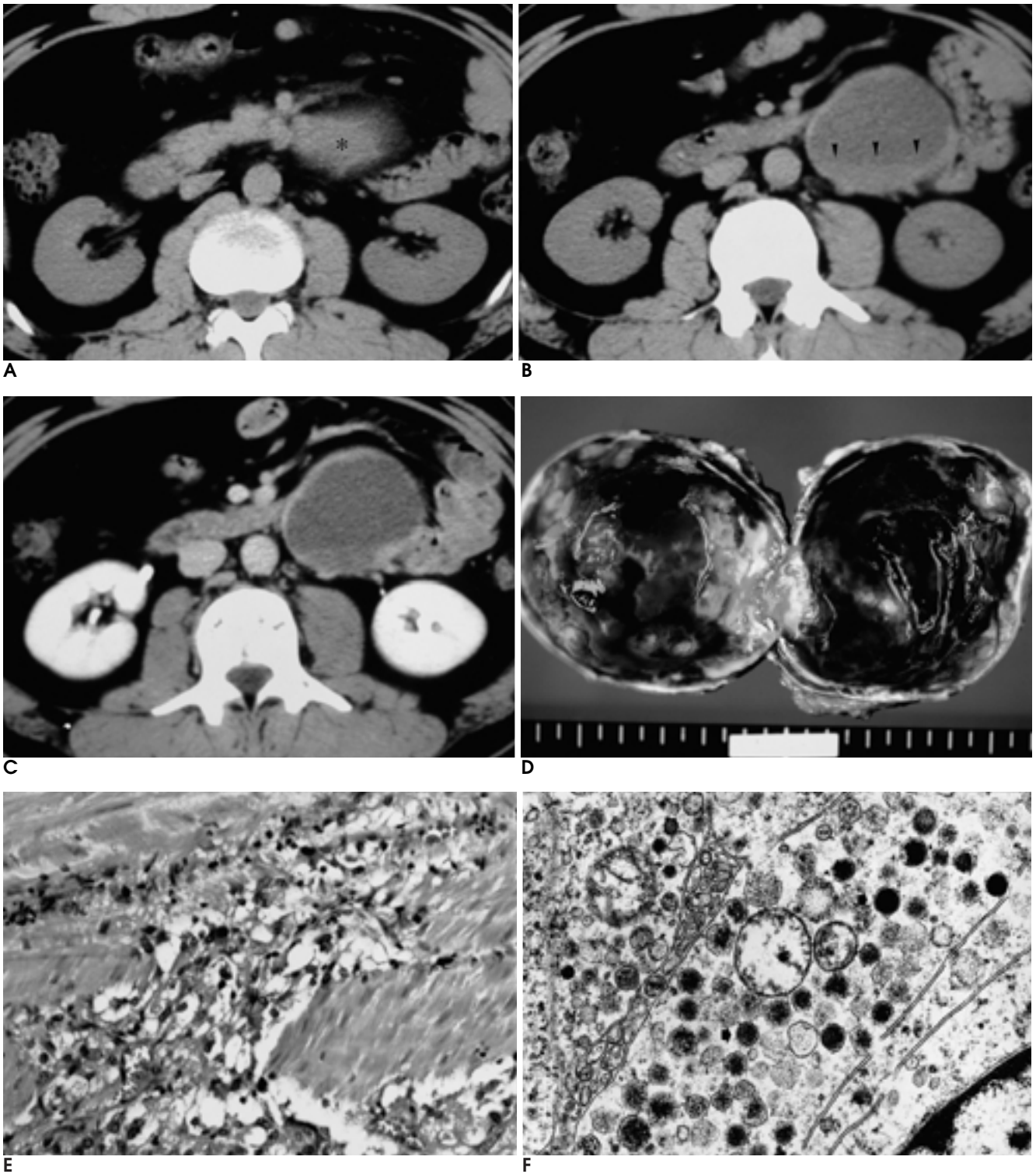


Fig. 1. Mesenteric paraganglioma with cystic degeneration in a 33-year-old man.

A. Unenhanced axial CT image of the midabdomen shows a mass (asterisk) adjacent to the mesenteric root.

B. Unenhanced axial CT image 1.3 cm caudal to A shows a well-defined, large cystic mass with a fluid-fluid level (arrowheads), suggesting hemorrhagic necrosis in the tumor.

C. Contrast-enhanced axial CT image shows thick enhancement of the wall of the mass with internal non-enhancing cystic degeneration.

D. Photograph of the sectioned surgical specimen shows a unilocular cystic tumor filled with hemorrhagic fluid.

E. Photomicrograph shows a pleomorphic lesion consisting of spindle or angular cells with clear cytoplasm and irregular nuclei (H & E stain, $\times 200$).

F. Photomicrograph with electron microscopy demonstrates scattered small dense neurosecretory granules (arrows).

3). Zuckerkandl (neuroblast) (1 - , ,

가 , 90% , 10% 60% , , , (2 - 4),

(1). 가 .

(2). (5, 6). (2 - 10%) 0.13% , (20 - 40%) (6),

Zuckerkandl (3). , , , , (1). (2 - 4).

CT 가 , , , (1).

, Zuckerkandl 가 , , , , (1, 7).

(3, 4). , CT ,

가 , CT

CT .

Zuckerkandl

CT 가 (2).

3 cm , (7 cm) (12 cm) (2).

CT ,

(1 - 3, 5). Hayes (2) 31

CT , 55%

가 , 39%

가 . CT -

1. Jaffer S, Harpaz N. Mesenteric paraganglioma: a case report and review of the literature. *Arch Pathol Lab Med* 2002;126:362-364
2. Hayes WS, Davidson AJ, Grimley PM, Hartman DS. Extraadrenal retroperitoneal paraganglioma: clinical, pathologic, and CT findings. *AJR Am J Roentgenol* 1990;155:1247-1250
3. Lee TH, Slywotzky CM, Lavelle MT, Garcia RA. Cystic pheochromocytoma. *Radiographics* 2002;22:935-940
4. Hayes WS, Davidson AJ, Hartman DS, Sliverman PM, Stull MA. Abdominal case of the day. Malignant extraadrenal retroperitoneal paraganglioma. *AJR Am J Roentgenol* 1990;154:1329-1330
5. Nishino M, Hayakawa K, Minami M, Yamamoto A, Ueda H, Takasu K. Primary retroperitoneal neoplasms: CT and MR imaging findings with anatomic and pathologic diagnostic clues. *Radiographics* 2003;23:45-57
6. Salanitri J, Smith P, Schlicht S. Multifocal malignant extra-adrenal paragangliomas of the organ of Zuckerkandl and urinary bladder. *Australas Radiol* 2001;45:229-232
7. Sheth S, Horton KM, Garland MR, Fishman EK. Mesenteric neoplasms: CT appearances of primary and secondary tumors and differential diagnosis. *Radiographics* 2003;23:457-473

Mesenteric Paraganglioma with Cystic Degeneration: Case Report¹

Dae-Bong Kim, M.D., June-Sik Cho, M.D., Kyung-Sook Shin, M.D.,
Byung-Seok Shin, M.D., Seung-Moo Noh, M.D.², Dae-Young Kang, M.D.³

¹Department of Radiology, Chungnam National University College of Medicine

²Department of Surgery, Chungnam National University College of Medicine

³Department of Pathology, Chungnam National University College of Medicine

Extra-adrenal abdominal paragangliomas are rare. Most arise from the organs of Zuckerkandl, involve large concentrations of paraganglionic tissue, and are located in the para-aortic space along the sympathetic chain. Published reports have, however, described normal paraganglionic tissue at the root of the mesentery which serves as the superior limit of the organs of Zuckerkandl, and mesenteric paraganglioma is very rare. We report a case of paraganglioma with cystic degeneration arising from the mesentery.

Index words : Mesentery, neoplasms
Mesentery, CT

Address reprint requests to : June-Sik Cho, M.D., Department of Radiology, Chungnam National University Hospital,
640 Daesa-dong, Joong-gu, Taejon 301-721, Korea.
Tel. 82-42-220-7333 Fax. 82-42-253-0061 E-mail: jscho@cnuh.co.kr