

1

2

(1, 2).
2
1970 가 Hamperl 100 (3)
(smooth muscle actin) (Fig. 2B)
, S - 100
H&E
가
(Fig. 2C).

46 가 2
48 가
2.5×2 cm 가
가
(Fig. 3A).
2.1×1.8×1.5 cm 가
(Fig. 3B).
(Fig. 1A).
6 3.8×2.1×1.2 cm
(Fig. 1B).

가
(4, 5). Rosen Oberman (6)
, p53 , C - erb - B2 cytokeratin 27 86 60
(Fig. 2A)
(epithelial membrane antigen)
Tavassoli (7) 27
가

2003 10 10 2003 12 9

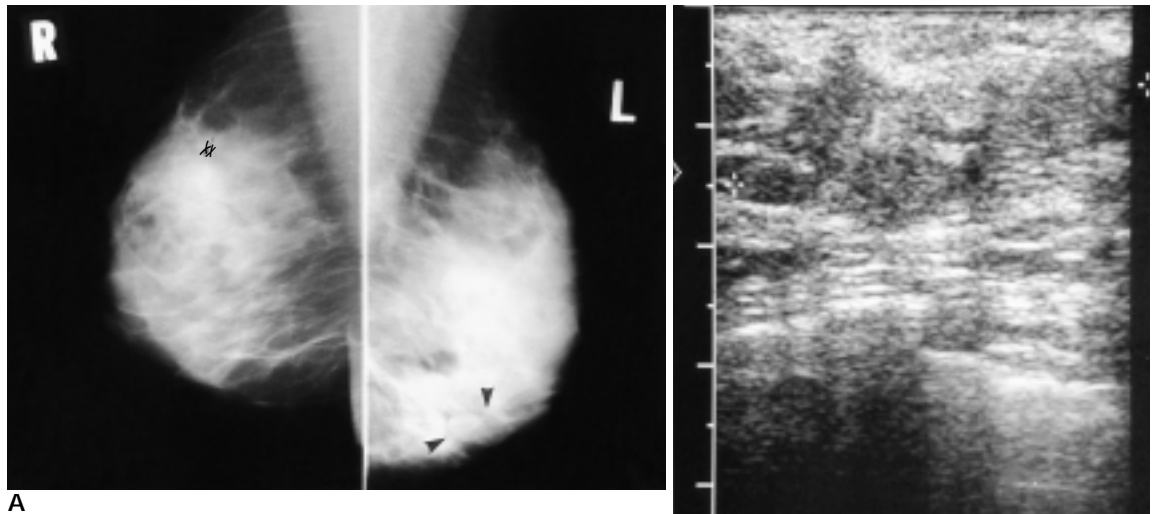


Fig. 1. Radiologic findings of malignant adenomyoepithelioma in a 46-year-old woman.

A. Mediolateral oblique view of mammogram shows irregular margined dense mass at the lower portion of left breast (arrow head). There is a fibroadenoma at the upper portion of right breast (arrow).

B. Ultrasonogram shows elongated shaped, irregular margined and inhomogeneous echoic mass in the left breast.

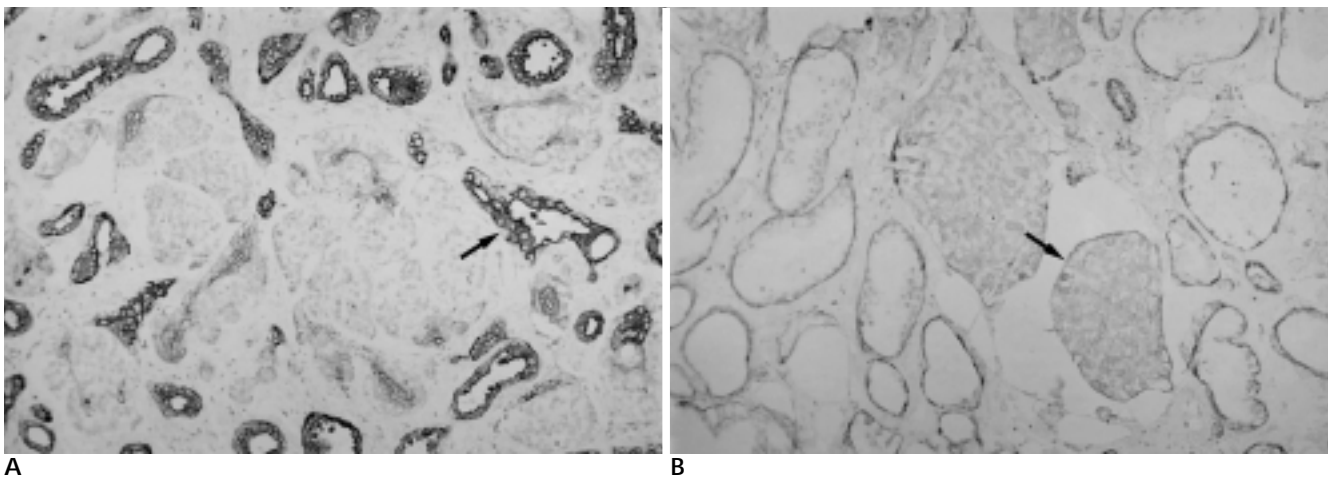
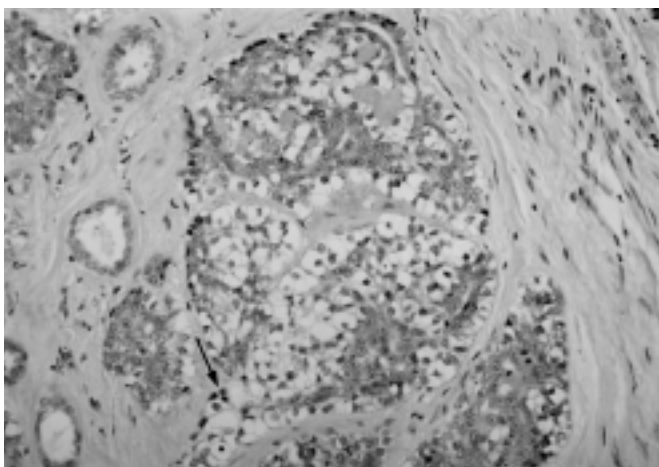


Fig. 2. Pathologic findings of malignant adenomyoepithelioma in a 46-year-old woman.

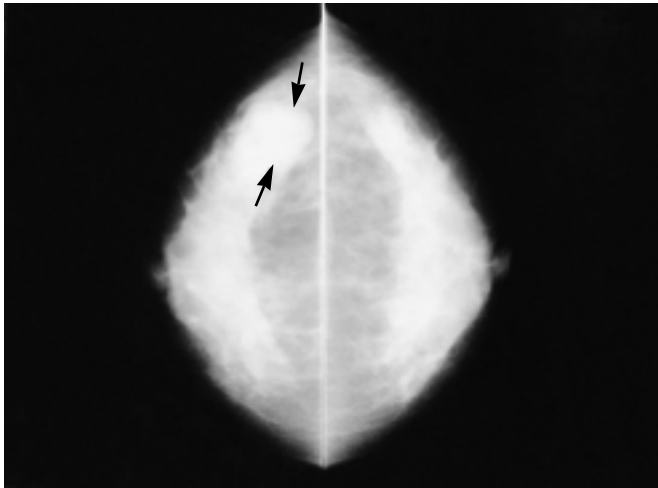
A. Immunohistochemical stain with cytokeratin shows diffusely positive for epithelial and myoepithelial cells (arrow).

B. Immunohistochemical stain with smooth muscle actin shows positive for myoepithelial cells (arrow).

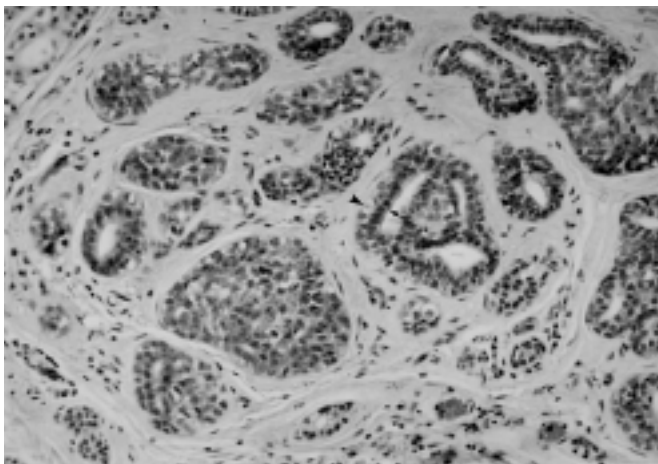
C. Photomicrograph shows invasion and mitosis (arrow), which represent the malignancy, (H & E $\times 400$).



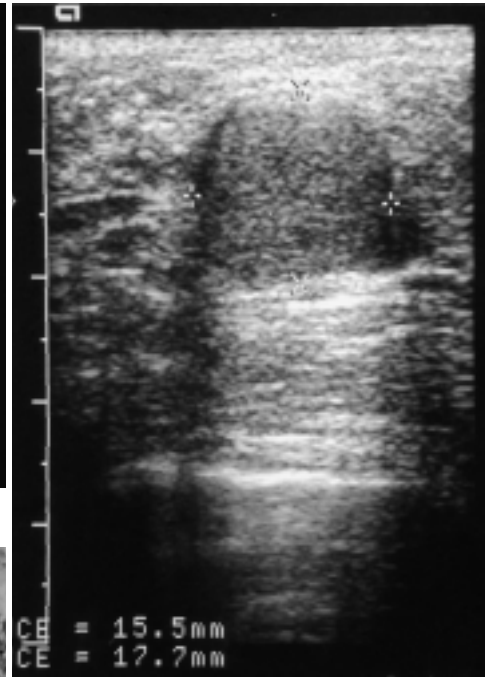
C



A



C



B

Fig. 3. Benign adenomyoepithelioma in 48-year-old woman.
A. Craniocaudal view of mammogram shows partially well defined and posteriorly protruding dense mass at the outer portion of the right breast (arrow).

B. Ultrasonogram shows round shaped well defined and hypoechoic mass in the right breast.

C. Photomicrograph shows inner eosinophilic epithelial cells (arrow) and outer myoepithelial cells (arrowhead).

가

가

cytokeratin
(smooth muscle actin)
, S-100
(8).

(4).

(9).

가

(7).

1. Hamperl H. The myoepithelia (myoepithelial cells). Normal state; regressive changes; hyperplasia; tumors. *Curr Top Pathol* 1970;53: 161-220
2. Parks RW, Clarke MA, Cranley B. Adenomyoepithelioma of the breast. *Int J Clin Pract* 1997;51(6):414-415
3. Ryu KW, Kim AR, Kim CH, et al. Mammary adenomyoepithelioma in male patient. *Journal of Korean Breast Cancer Society* 2000;1:76-79
4. Ahmed AA, Heller DS. Malignant adenomyoepithelioma of the breast with malignant proliferation of epithelial and myoepithelial elements: a case report and review of the literature. *Arch Pathol Lab Med* 2000;124(4):632-636
5. Howlett DC, Mason CH, Biswas S, Sangle PD, Rubin G, Allan SM. Adenomyoepithelioma of the breast: spectrum of disease with associated imaging and pathology. *AJR Am J Roentgenol* 2003;180(3):

799-803

6. Rosen PP, Overman HA. Tumors of mammary gland. *AFIP* 1993; 91-96

7. Tavassoli FA. Myoepithelial lesions of the breast: myoepitheliosis, adenomyoepithelioma, and myoepithelial carcinoma. *Am J Surg Pathol* 1991;15:554-568

8. Wallis NT, Banerjee SS, Eyden BP, Armstrong GR.

Adenomyoepithelioma of the skin: a case report with immunohistochemical and ultrastructural observations. *Histopathology* 1997; 31(4):374-377

9. Bigotti G, Di Giorgio CG. Myoepithelioma of the breast: histologic, immunologic, and electromicroscopic appearance. *J Surg Oncol* 1986;32(1):58-64

J Korean Radiol Soc 2003;49:513 - 516

Mammographic & Sonographic findings of Adenomyoepithelioma of the Breast: Case Report¹

You Me Kim, M.D.

¹*Department of Radiology, Dankook University Hospital*

Adenomyoepithelioma is very rare. Because of its rarity, adenomyoepithelioma may present a diagnostic challenge to the radiologists and there is a little information on the diagnosis and treatment of this condition. I report on two patients with benign and malignant adenomyoepitheliomas which represent breast masses on mammograms and ultrasonograms. The diagnosis was confirmed by immunohistochemical study of the resected specimens.

Index words : Breast, neoplasms

Address reprint requests to : You Me Kim, M.D., Department of Radiology, Dankook University Hospital,
29, Anseodong, Chonan, Choongnam 330-715, Korea.
Tel. 82-41-550-6922 Fax. 82-41-552-9674 E-mail: Sirenos@hanmail.net