

E(Job 's)

: 1

E(Job 's)

E

E(Job 's)

9

E(Hyperimmunoglobulin E)

(Job 's or Buckley)

1966 David (1)

Buckley (2)

가

, 40

(Figs. 1A, B).

8

(Fig. 1C).

E

(Fig. 1D).

(3 - 5)

가

(Methicillin -

E

9

resistant *Staphylococcus aureus*)

9 가

(Fig.

1E)

4

E

가

가

6,240 /mm<sup>3</sup>

8.3%

E

1966

David

Ig G, Ig A, Ig M

Ig E

Job

, Buckley

가

4,000 IU/ml

가

E

(1, 2, 6).

E

(6).

1

2002 12 9

2003 3 11

가 가 , (5).



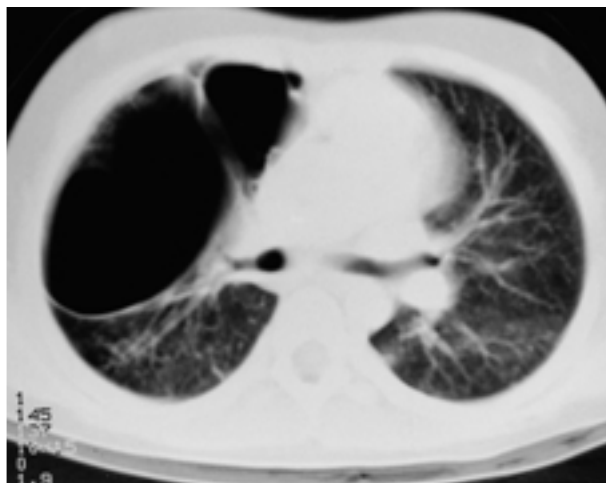
A



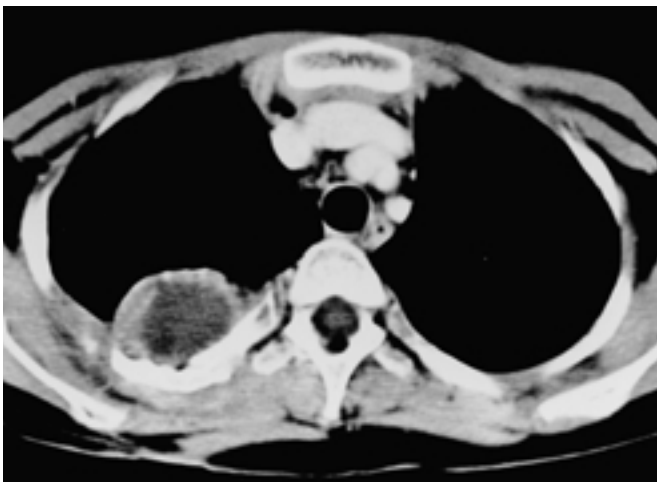
B



C



D



E

**Fig. 1.** Hyperimmuoglobulin E syndrome in 9-year-old child.

**A.** Initial chest radiogram shows multifocal consolidations in right lung.

**B.** Follow-up chest radiogram obtained 40 days later shows several variable size cysts in right upper lung zone.

**C.** Follow-up chest radiogram obtained 8 months later shows enlarged cyst in right upper lung zone.

**D.** Initial chest CT scan taken on same day as figure 1C shows variable sized cysts.

**E.** Follow-up chest CT scan obtained 6 months after right upper lobe lobectomy shows empyema along operative incisional area of right pleura.

가  
(4).  
valve mechanism)

1. Davids SD, Schaller J, Wedgwood RJ. Job 's syndrome. Recurrent, ' cold ' staphylococcal abscesses. *Lancet* 1966;1:1013-1015
2. Buckley RH, Wray BB, Belmaker EZ. Extreme hyperimmunoglobulinemia E and undue susceptibility to infection. *Pediatrics* 1972;49:59-70
3. Merten DF, Buckley RH, Pratt PC, Effmann EL, Grossman H. Hyperimmunoglobulinemia E syndrome: radiographic observations. *Radiology* 1979;132:71-78
4. Fitch SJ, Magill HL, Herrod HG, Moinuddin M. Hyperimmunoglobulinemia E syndrome: pulmonary imaging considerations. *Pediatr Radiol* 1986;16:285-288
5. Kirchner SG, Sivit CJ, Wright PF. Hyperimmunoglobulinemia E syndrome: association with osteoporosis and recurrent fracture. *Radiology* 1985; 156:362
6. Grimbacher B, Holland SM, Gallin JI, et al. Hyper-IgE syndrome with recurrent Infections-an autosomal dominant multisystem disorder. *N Engl J Med* 1999;340:692-702
7. Quigley MJ, Fraser RS. Pulmonary pneumatocele: pathology and pathogenesis. *AJR Am J Roentgenol* 1988;150:1275-1277

## Hyperimmunoglobulin E (Job's) Syndrome: Case Report<sup>1</sup>

Sung Keun Park, M.D., Seok Jin Choi, M.D., Yong Woo Kim, M.D.

<sup>1</sup>*Department of Radiology, Pusan Paik Hospital, College of Medicine, Inje University*

Hyperimmunoglobulin E (Job's) syndrome is a rare hereditary immunodeficiency disease characterized by recurrent infection by staphylococcus aureus, extremely high levels of serum immunoglobulin E, recurrent pneumonia, and air cyst. We report the radiologic findings of recurrent pneumonia and air cyst in a nine-year-old child with hyperimmunoglobulin E syndrome, and review the literature.

**Index words :** Lung  
Lung, cavitation  
Lung, infection

Address reprint requests to : Park Sung Keun, M.D., Department of Radiology, Busan Paik Hospital, College of Medicine, Inje University, 633-165, Gaekum-dong, Busanjin-gu, Busan 614-735, Korea.  
Tel. 82-51-890-6579 Fax. 82-51-896-1085