



(germ cell tumor) (Fig. 1B). T2

4.6% (suprasellar (mixed germ cell (Fig. 1C). MR

region) tumor) 10 - 30% (Figs. 1D and E).

가 (1 - 4). 5 가

가 (immature teratoma) (ger -

minoma) (yolk sac tumor) (Fig. 1F).

4 가 (polyuria)

(polydipsia)

3 가

CT 가

(Fig. 1A).

가

CT MR 3.0×2.8×3.0 cm T1

(sellar turcica) (infundibulum)

(2, 4 - 8).

가

(6).

¹
가

가
50%
Hoffman 51
3
(6, 9).
(1). MR

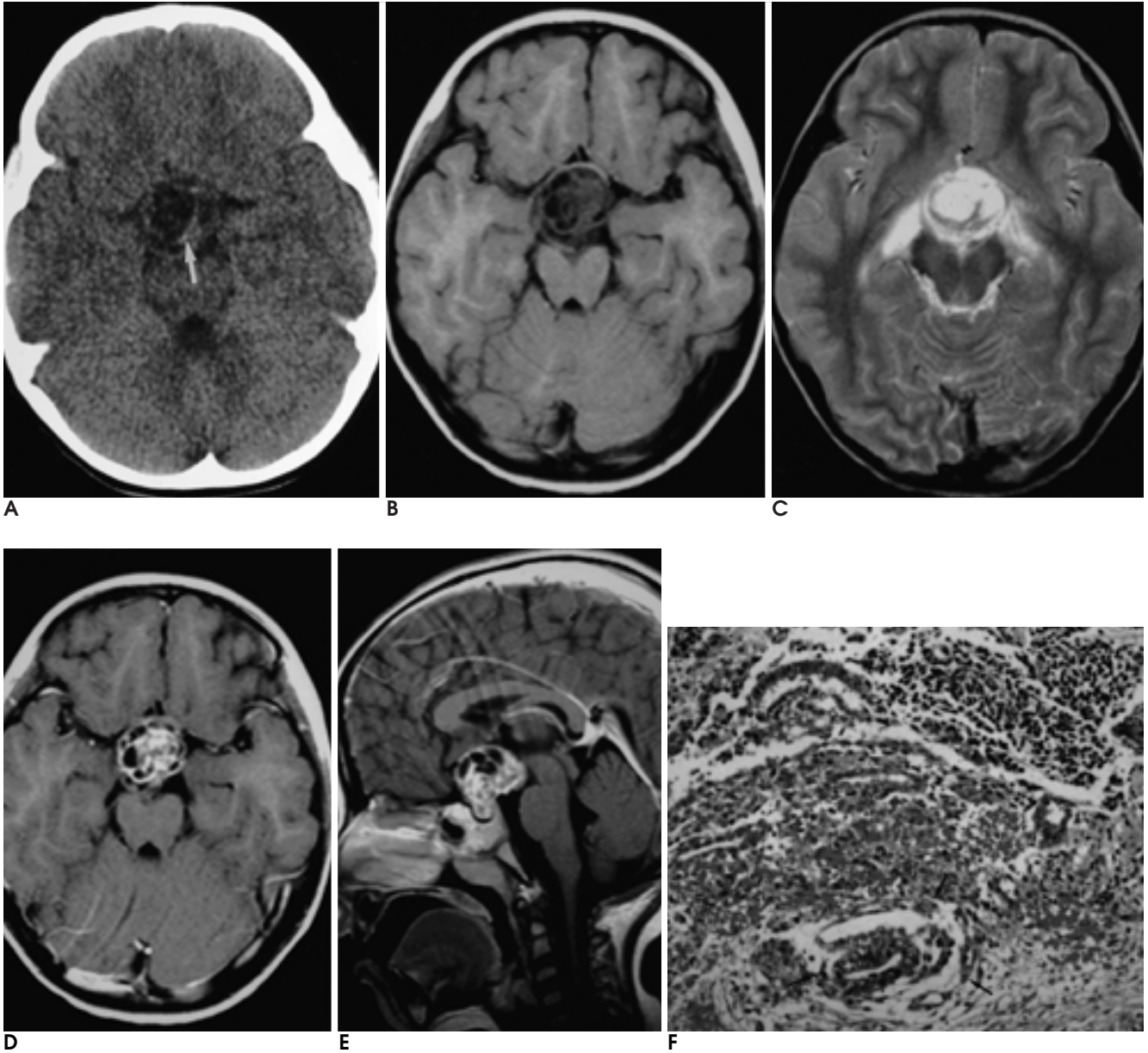


Fig. 1. A 5 year-old-girl with suprasellar mixed germ cell tumor.

A. Precontrast CT scan shows an inhomogeneous low attenuating suprasellar mass with areas of tiny higher attenuation (arrow) that are likely calcifications.

B. T1-weighted axial image demonstrates a suprasellar mass of inhomogeneous low signal intensity that contains cystlike areas.

C. On T2-weighted axial image, the mass shows inhomogeneous high signal intensity with peritumoral edema. Extensive edema along both optic tracts is also noted.

D and E. Enhanced T1-weighted axial (**D**) and sagittal (**E**) images show an inhomogeneous enhancing suprasellar mass with multiple cystic areas, having an intrasellar extension.

F. Pathologic specimen (H & E, × 100) shows large area of immature teratoma composed of fetal type glands with embryonic mesenchyme-like stroma and partly yolk sac tumor area (arrows). The mass has partly germinoma area, too (not shown).

(1).

CT

가

(5, 10).

(4, 5).

가

가

CT

(2).

CT

- fetoprotein (AFP)

MR

(choriocarcinoma)

가

가

가

CT MR

CT MR

(2, 5, 10).

AFP, human chorionic gonadotropin (HCG), CEA (carcinoembryonic antigen), placental alkaline phosphatase (PLAP)

(3). HCG

, AFP

74 - 100%

29 - 42%

AFP HCG

, CEA

PLAP

70 - 100%

(4 - 6, 9).

가

가

(diencephalon)

- Hoffman HJ, Otsubo H, Hendrick EB, et al. Intracranial germ-cell tumors in children. *J Neurosurg* 1991;74:545-551
- Sumida M, Uozumi T, Kiya K, et al. MRI of intracranial germ cell tumors. *Neuroradiology* 1995;37:32-37
- Cho DY, Wang YC, Ho WL. Primary intrasellar mixed germ-cell tumor with precocious puberty and diabetes insipidus. *Childs Nerv Syst* 1997;13:42-46
- Ikura Y, Sasaki M, Ohgami M, et al. Mixed germ-cell tumor of the brain. Pathologic study of six autopsy cases. *Pathol Res Pract* 1996;192:595-603
- Ho DM, Liu HC. Primary intracranial germ cell tumor. Pathologic study of 51 patients. *Cancer* 1992;70:1577-1584
- Lim SK, Chung HC, Kim WT, et al. A malignant mixed germ cell tumor originating from the pituitary gland with a suprasellar extension: a case report. *Korean J Intern Med* 1986;1:266-271
- Kidooka M, Okada T, Nakajima M, Handa J. Intra-and suprasellar germinoma mimicking a pituitary adenoma: case report. *Neurol Med Chir (Tokyo)* 1995;35:96-99
- Sumida M, Uozumi T, Yamanaka M, et al. Displacement of the normal pituitary gland by sellar and juxtasellar tumors: surgical-MRI correlation and use in differential diagnosis. *Neuroradiology* 1994;36:372-375
- Yamashita N, Kanai H, Kamiya K, Yamada K, Togari H, Nakamura T. Immature teratoma producing alpha-fetoprotein without components of yolk sac tumor in the pineal region. *Childs Nerv Syst* 1997;13:225-228
- Fujimaki T, Matsutani M, Funada N, et al. CT and MRI features of intracranial germ cell tumors. *J Neurooncol* 1994;19: 217-226

Suprasellar Mixed Germ Cell Tumor: Case Report¹

Eun Ja Lee, M.D., Hye Kyung Lee, M.D.², Mi Sung Kim, M.D.

¹*Department of Diagnostic Radiology, Kwandong University College of Medicine, Myongji Hospital*

²*Department of Clinical Pathology, The Catholic University of Korea*

Primary suprasellar mixed germ cell tumors are rare, and the characteristics of their imaging findings are not well known. We report the clinical and imaging findings of a case of suprasellar mixed germ cell tumor comprising a germinoma, immature teratoma, and yolk sac tumor.

Index words : Brain, germ cell tumor
Brain, MR
Brain, CT

Address reprint requests to : Eun Ja Lee, M.D., The Department of Radiology, Kwandong University, College of Medicine, Myongji Hospital, 697-24, Hwajung-dong, Dukyang-gu, Koyang-city 412-270, Korea.
Tel. 82-31-962-6900 Fax. 82-31-962-4902 E-mail: ejl1048@hanmail.net