

CT : 1

CT

14

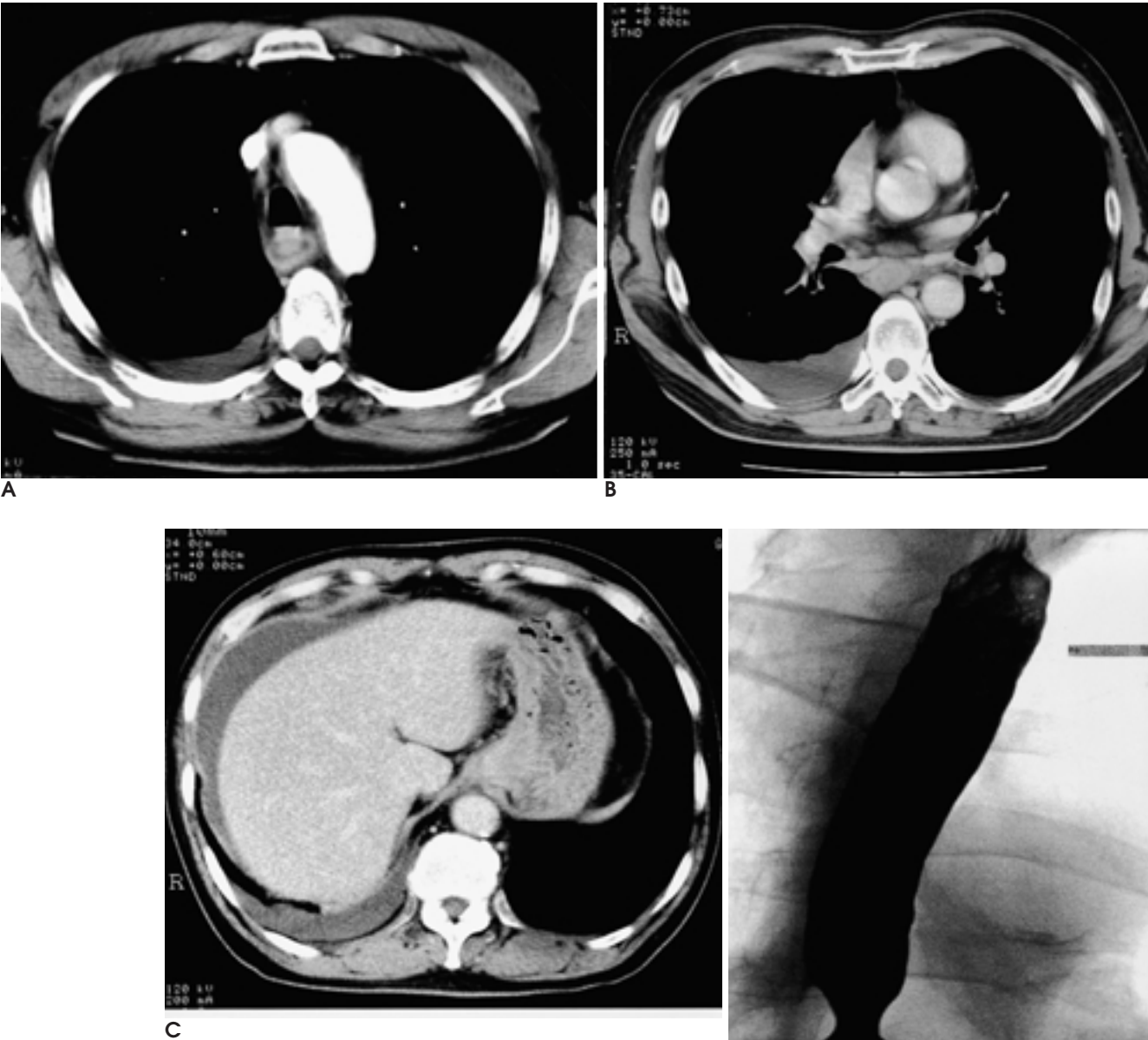
CT

(1). , manom - . 20 manometry  
etry, CT 18 mmHg  
(2, 3).  
55  
CT  
50%  
55 가 2 , ,  
55 가 2 , ,  
40% , 10%  
9100/mm<sup>3</sup>( 67%, 14%), 7 (1, 4).  
mm/hr CT 가  
1 cm 가 (target)  
가 (Fig. 1A).  
가 (Fig. 1B, C).  
(Fig. 1D).  
Manometry 138 mmHg  
1107/mm<sup>3</sup>( 95%, 5%), glucose 92 mg/dl 가  
PH 7.0,  
4500/mm<sup>3</sup>(old: 80%, fresh: 20%), 2700/mm<sup>3</sup> 가  
60 mg  
(5).  
70%

30% rowing), (irritability), (dysmotility)

가

(luminal nar - 가 가 (1).



**Fig. 1.** Initial CT and esophagogram of a 55-year-old man with eosinophilic esophagitis.  
**A.** CT scan at the level of aortic arch shows circumferential esophageal wall thickening with three layers. Submucosal layer is shown as a low attenuation ring. Small amount of right pleural effusion is also seen.  
**B.** CT scan at the lower level of heart shows circumferential esophageal wall thickening.  
**C.** CT scan at the level of upper abdomen shows right pleural effusion and ascites at perihepatic space.  
**D.** Esophagogram shows focal smooth narrowing of mid-esophagus with dilatation of proximal esophagus.

CT  
 , monom - 가 가  
 etry 가 가  
 , , (mucosal ring), (cervical  
 web) . (dif -  
 fuse esophageal spasm), 가,  
 (cricopharyngeus muscle) (2).  
 manometry  
 가 .  
 CT  
 가 3 CT  
 가  
 (6). CT 가  
 가 (3).  
 , , ,  
 CT 5 mm  
 가 55%, 17%  
 가  
 (7). CT  
 가 .

1. Vitellas KM, Bennett WF, Bova JG, Johnson JC, Greenson JK, Caldwell JH. Radiographic manifestations of eosinophilic gastroenteritis. *Abdom Imaging* 1995;20:406-413
2. Vitellas KM, Bennett WF, Bova JG, Johnston JC, Caldwell JH, Mayle JE. Idiopathic eosinophilic esophagitis. *Radiology* 1993;186:789-793
3. Horiki N, Maruyama M, Fujita Y, Yonekura T. A case of idiopathic eosinophilic esophagitis with CT findings showing marked thickening of the esophageal wall. *Nippon Shokakibyo Gakkai Zasshi* 1998;95:769-776
4. Gay SP, Shaffer HA Jr, Futterer SF, Aitchison PM, Patel SJ. Gastrointestinal case of the day. Eosinophilic gastroenteritis. *AJR Am J Roentgenol* 1996;167:241, 244
5. Levine MS, Saul SH. Idiopathic eosinophilic esophagitis: how common is it? *Radiology* 1993;186:631-632
6. Van Hoe LV, Vanghillewe K, Baert AL, Ponette E, Geboes K, Stevens E. CT findings in nonmucosal eosinophilic gastroenteritis. *J Comput Assist Tomogr* 1994;18:818-820
7. Berkovich GY, Levine MS, Miller WT Jr. CT findings in patients with esophagitis. *AJR Am J Roentgenol* 2000;175:1431-1434

## CT Findings of Eosinophilic Esophagitis: Case Report<sup>1</sup>

Young Tong Kim, M.D.

<sup>1</sup>Department of Diagnostic Radiology, Soonchunhyang University, Chunan Hospital

Eosinophilic esophagitis is a rare inflammatory disease of unknown origin. Its reported CT findings are circumferential wall thickening of the entire esophagus, with pleural effusion and ascites.

**Index words :** Esophagus, esophagitis  
 Esophagus, CT

Address reprint requests to : Young Tong Kim, M.D., Department of Radiology, Soonchunhyang University Hospital,  
 23-20, Bongmyung-dong, Chunan 330-100, Korea.  
 Tel. 82-41-570-3501 Fax. 82-41-579-9026