

Caldwell view
가

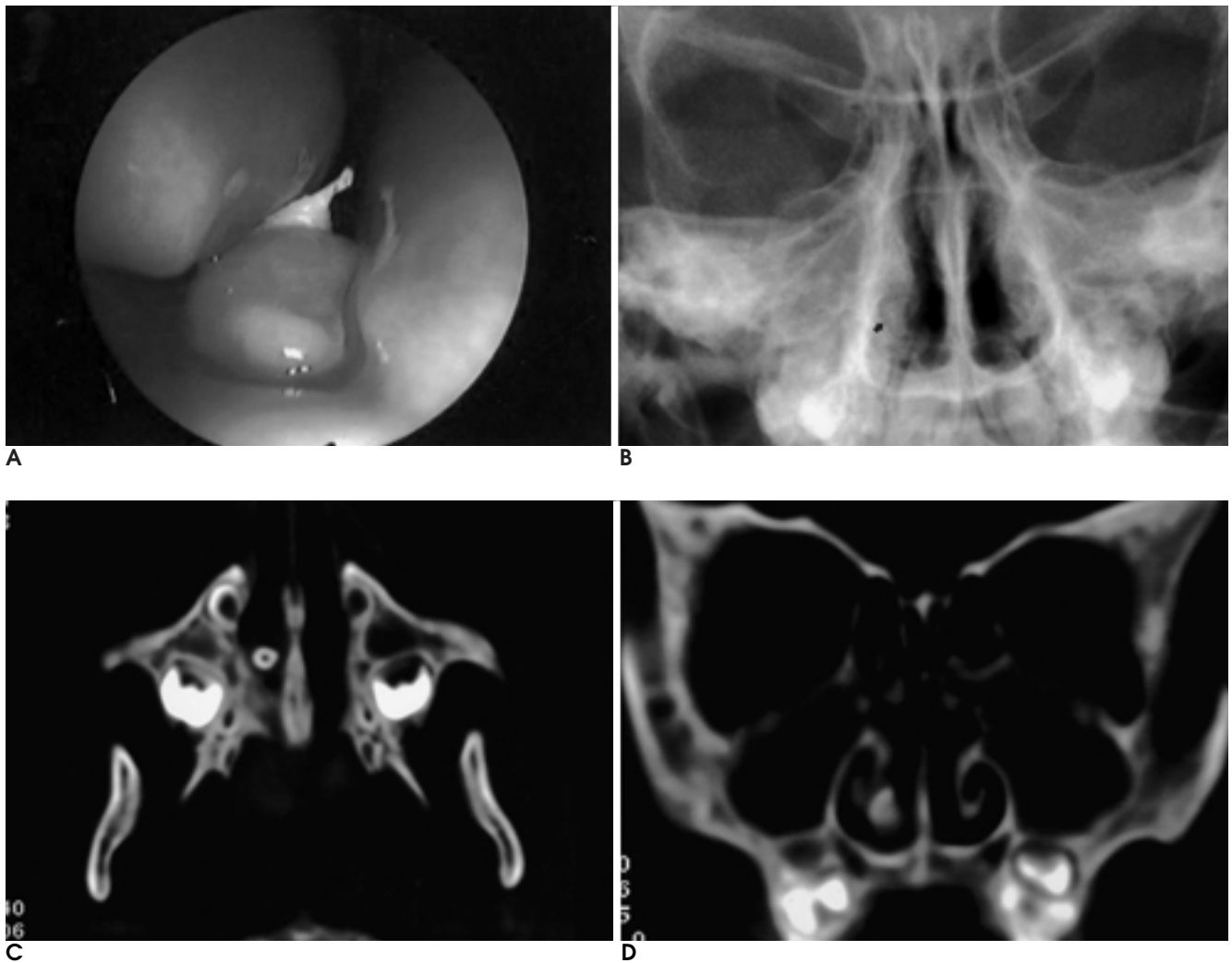


Fig. 1. A 5-year-old boy with a nasal tooth

A. Nasal endoscopy shows a bony elongation in the nasal floor with surrounding mucosal swelling.

B. Caldwell view illustrates a well-defined radiopaque lesion in right nasal cavity (arrow).

C, D. Axial (**C**) and coronal (**D**) scans of the paranasal sinus CT show a high attenuated mass with central lucency and peripheral cortical rim in right middle turbinate.

. CT

(7).

(exostosis), (antrolith),

(8).

(8).

가 ,
가 .

가 .

1. Thawley SE, Ferrier KA. Supernumerary nasal tooth. *Laryngoscope* 1977;87:1770-1773
2. Smith RA, Gordon NC, Deluchi SF. Intranasal tooth. *Oral Surg Oral Med Oral Pathol* 1979;47:120-122
3. Noreano EH, Zich DK. Nasal Tooth. *Am J Otolaryngol* 1998;19:124-126
4. Murty PS, Hazairka P, Hebbar GK. Supernumerary nasal teeth. *Ear Nose Throat J* 1988;67:128-129
5. Rege SR, Shah KL, Marfati PT. Osteomyelitis of maxilla with extension of teeth in floor of nose requiring excision. *J Laryngol Otol* 1970;84 533-535
6. Caver DD, Peterson S, Owens T. Intranasal teeth. *Oral Surg Oral Med Oral Pathol Oral Radiol Endod* 1990;70:804-805
7. Chen A, Huang JK, Cheng SJ, Sheu CY. Nasal teeth: report of three cases. *AJNR Am J Neuroradiol* 2002;23:671-673
8. El-Sayed Y. Sinonasal teeth. *Am J Otolaryngol* 1995;24:180-183

Nasal Tooth: Case Report¹

Si Hyun Park, M.D., Ji Hye Kim, M.D., Hee Young Hwang, M.D., Dal Mo Yang, M.D.,
Hyung Sik Kim, M.D., Chol Heui Park, M.D.

¹Department of Radiology, Gil Medical Center, Gachon Medical School

Ectopic tooth is not uncommon and usually occurs in the palate and maxillary sinus. We report a case of ectopic tooth located in the nasal cavity, a rare site. The mass depicted by CT was highly attenuated, and central lucency was observed.

Index words : Tooth, nose
Tooth, ectopic
Paranasal sinuses, CT

Address reprint requests to : Si Hyun Park, M.D., Department of Radiology, Gil Medical Center, Gachon Medical School
1198 Guwol-dong, Namdong-gu Incheon 405-220, Korea.
Tel. 82-32-460-3060 Fax. 82-32-460-3065 E-mail: zzizzin@hanmail.net