



가 . 1

가 (Fig. 1C).

2 CT 가 5.5×6×7 cm ,

(1, 2).

53% (Fig. 1D).

4 가

(2 - 4).

2

(5, 6).

(Fig.

1E).

Prussian blue
coagulase(-) staphy -

lococcus가

41 가 2

4

(Fig. 1A),

HCG, CA125 tumor marker

- FP, - (4).

, 가 가

가

가 (Fig. 1B) 4

(Fig. 1A).

(3).

8

가

가

1
2

2001 9 18

2002 11 10

(5).

(5, 6). Uyama (5)
가 12
가

2 가

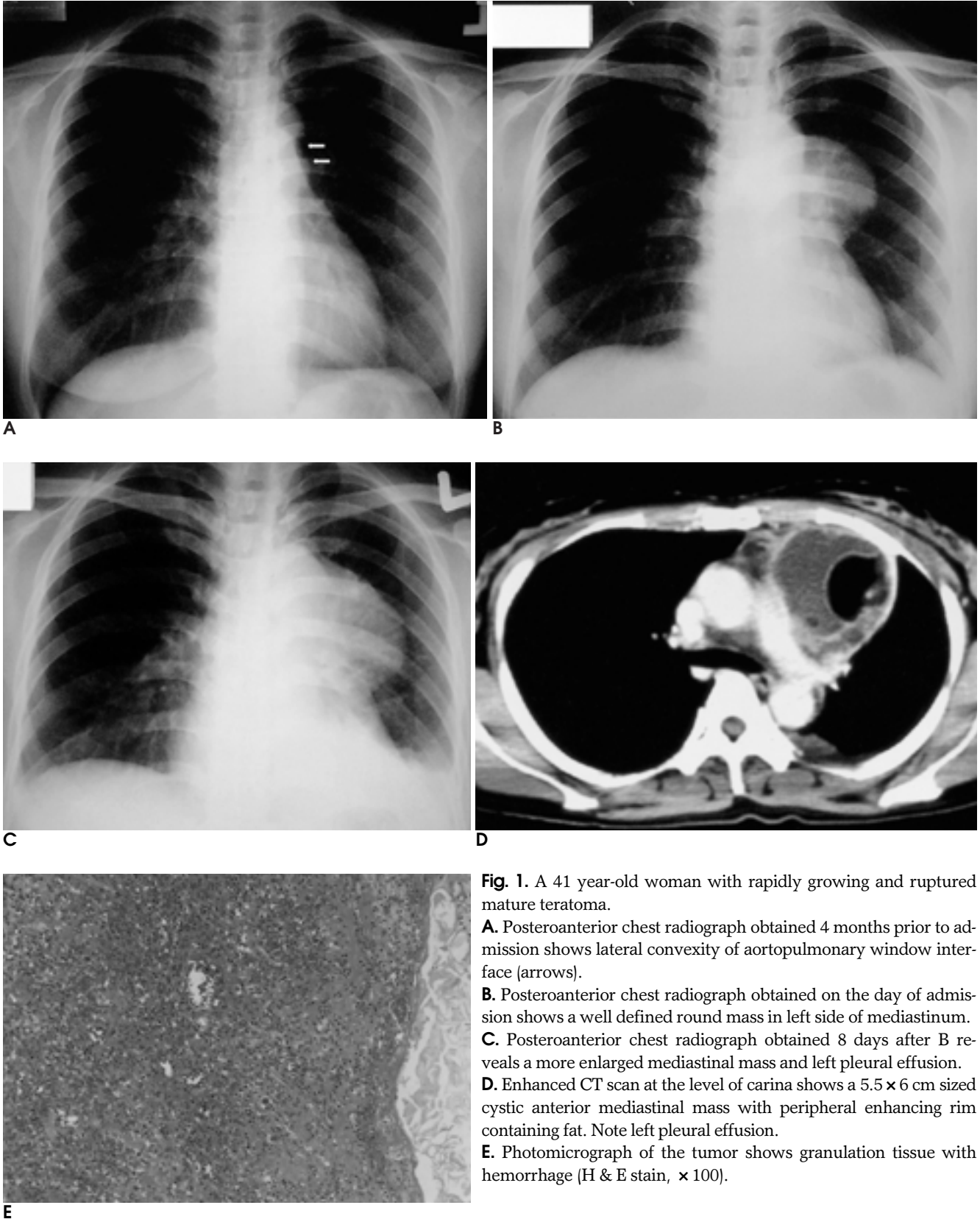


Fig. 1. A 41 year-old woman with rapidly growing and ruptured mature teratoma.
A. Posteroanterior chest radiograph obtained 4 months prior to admission shows lateral convexity of aortopulmonary window interface (arrows).
B. Posteroanterior chest radiograph obtained on the day of admission shows a well defined round mass in left side of mediastinum.
C. Posteroanterior chest radiograph obtained 8 days after B reveals a more enlarged mediastinal mass and left pleural effusion.
D. Enhanced CT scan at the level of carina shows a 5.5 × 6 cm sized cystic anterior mediastinal mass with peripheral enhancing rim containing fat. Note left pleural effusion.
E. Photomicrograph of the tumor shows granulation tissue with hemorrhage (H & E stain, × 100).

Uyama

CT

가 . Hussain

(6)

Hussain (6)
coagulase (-) staphylococcus가

가

가

가

(3, 7).

가

(7).

Southgate Slade (8)
가

4

coagulase (-) staphylococcus가

1. Fulcher AS, Porto AV, Jolles H. Cystic teratoma of the mediastinum: demonstration of fat/fluid level. *AJR Am J Roentgenol* 1990;154:259-260
2. Lewis BD, Hurt RD, Payne WS, Farrow GM, Knapp RH, Muhm JF. Benign teratomas of the mediastinum. *J Thorac Cardiovasc Surg* 1983;86:727-731
3. Choi SJ, Lee JS, Song KS, Lim TH. Mediastinal teratoma: CT differentiation of ruptured and unruptured tumors. *AJR Am J Roentgenol* 1998;171:591-594
4. Rosado-de-christenson ML, Templeton PA, Moran CA. Mediastinal germ cell tumors: radiologic and pathologic correlation. *RadioGraphics* 1992;12:1013-1030
5. Uyama T, Monden Y, Harada K, et al. Rapidly growing mature teratoma of the mediastinum: do sex hormones affect growth of the tumor? *J Surg Oncol* 1988;38:285-289
6. Hussain SA, Shenaq S, Mendoza L, Sundermeyer J, Chakarvarty S. Mediastinal teratoma presenting as a rapidly enlarging paracardial mass. *Int Surg* 1983;68:179-180
7. Hiraiwa T, Hyayshi T, Kaneda M, et al. Rupture of a benign mediastinal teratoma into the right pleural cavity. *Ann Thorac Surg* 1991;5:110-112
8. Southgate J, Slade PR. Teratomatoid cyst of the mediastinum with pancreatic enzyme secretion. *Thorax* 1975;55:269-289

J Korean Radiol Soc 2002;47:487 - 489

Rapidly Growing Mature Teratoma in the Anterior Mediastinum: Case Report¹

Kyung Hwa Jung, M.D., Gyoo Sik Jung, M.D., Sang Heum Kim, M.D., Jin Do Huh, M.D.,
Young Duk Cho, M.D., Bong Kwon Chun, M.D.²

¹Department of Diagnostic Radiology, Gospel Hospital, College of Medicine, Kosin University

²Department of Anatomic Pathology, Gospel Hospital, College of Medicine, Kosin University

Mature teratoma is a benign tumor composed of a number of different types of well-differentiated tissues. Mature teratomas of the mediastinum usually grow slowly and are commonly asymptomatic. We report a case of mediastinal mature teratoma with rapid growth resulting in rupture

Index words : Mediastinum, CT
Mediastinum, neoplasms
Teratoma

Address reprint requests to : Kyung Hwa Jung, M.D., Department of Diagnostic Radiology, College of Medicine, Kosin University
34 Amnam-dong, Seo-gu, Busan 602-702, South Korea.
Tel. 82-51-990-6341 Fax. 82-51-255-2764 E-mail: gradang@netian.com