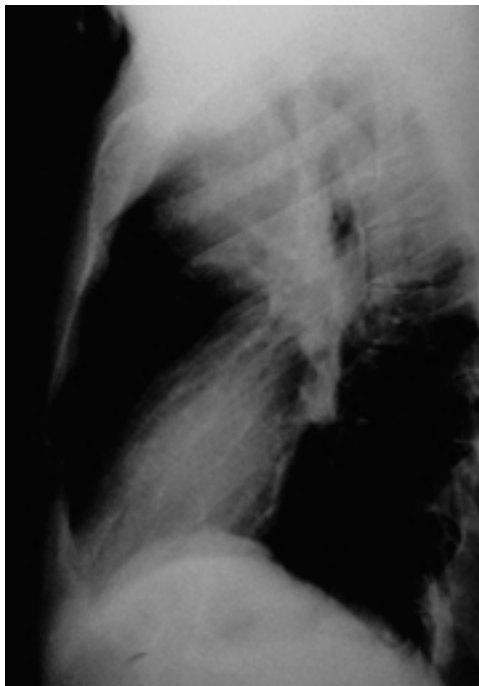


가 1% 25 1 . 가 (palisade arrangement) Verocay bodies가 (Fig. 1D). 가 Antoni type 2 65 가 A 6 (1-4), 가 (1-5). Takata (6) 1 (small cell tumors) 가 (plasmacytoma), (7, 8). , Mayo Clinic 87 3 , MSKCC(Memorial Sloan - Kettering Cancer Center) 67 6 (7, 8). MSKCC 25 가 3 가 , 1 가 (8). 2 가 Takata (6) 1 가 1% (manubrium) 가 (Fig. 1A). 가 9×8×7 cm (Fig. 1B). 가 (Fig. 1C). 가 (9). 가 (nutrient canal) 가 Sherman 가 (10).

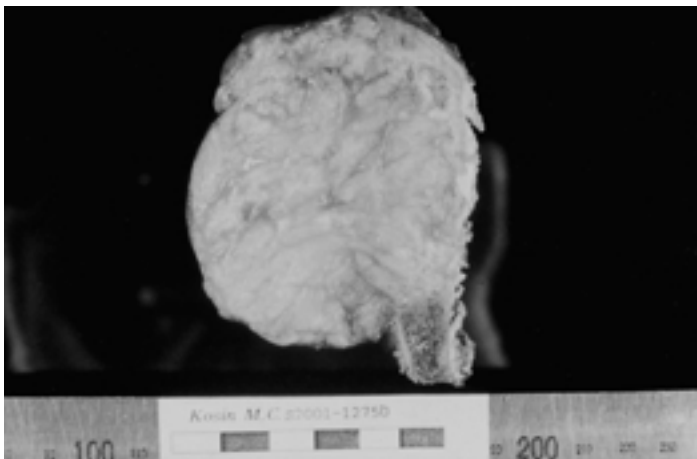
(aberrant intercostal nerve)



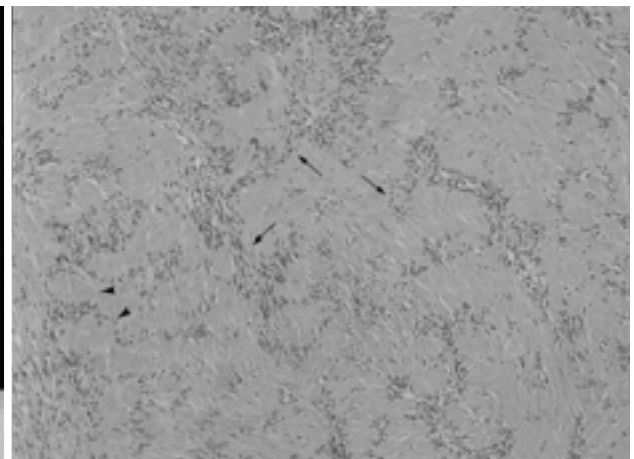
A



B



C



D

**Fig. 1.** A 25-year-old male patient with intraosseous neurilemmoma of the sternum.

**A.** Chest lateral radiograph shows expansile cortical thinning of the manubrium with adjacent anterior mediastinal soft tissue mass.

**B.** Postcontrast chest CT scan shows an expansile osteolytic lesion and destruction of posterior wall of the sternal manubrium (arrow) and soft tissue tumor extending from the manubrium to the anterior mediastinum.

**C.** Photograph of a cut specimen of the tumor shows solid component without necrosis nor hemorrhage.

**D.** Photomicrograph (H & E stain, × 100) of the tumor shows prominent Antoni type A areas with palisading arrangement (arrows) and Verocay bodies (arrowheads).

, Takata (6) (1 - 5).

Takata (6)

가 가

가

bone)

Antoni type A Antoni type B

가 . Antoni type A

, Verocay bodies

Antoni type B 가

S - 100

cellularity) (5, 9).

(higher degrees of

(mitosis)

가

가

1. Fawcett KJ, Dahlin DC. Neurilemmoma of bone. *Am J Clin Pathol* 1967;47:759-766
2. Park YK, Kim YW, Yang MH, Kim EJ, Ryu DM. Neurilemmoma of the mandible. *Skeletal Radiol* 1999;28:536-539
3. Chevalier X, Montazel JL, Voisin MC, Hernigou P. Intraosseous neurilemmoma of the lower third of the fibula. *AJR Am J Roentgenol* 1995;165:1555-1556
4. Vora RA, Mintz DN, Athanasian EA. Intraosseous schwannoma of the metacarpal. *Skeletal Radiol* 2000;29:224-226
5. Wirth WA, Bray CB. Intra-osseous neurilemmoma: case report and review of thirty-one cases from the literature. *J Bone Joint Surg Am* 1977;59:252-255
6. Takata K, Okuda K, Ochi M. Intraosseous neurilemmoma of the sternum. *Ann Thorac Surg* 1999;67:1474-1476
7. Downey RJ, Huvois AG, Martini N. Primary and secondary malignancies of the sternum. *Semin Thorac Cardiovasc Surg* 1999;11:293-296
8. Martini N, Huvois AG, Burt ME, et al. Predictors of survival in malignant tumors of the sternum. *J Thorac Cardiovasc Surg* 1996;111:96-106
9. de la Monte SM, Dorfman HD, Chandra R, Malawer M. Intraosseous schwannoma: histologic features, ultrastructure, and review of the literature. *Hum Pathol* 1984;15:551-558
10. Sherman MS. The nerves of bone. *J Bone Joint Surg* 1963;45:522-528

J Korean Radiol Soc 2002;47:403 - 405

## Intraosseous Neurilemmoma of the Sternum: A Case Report<sup>1</sup>

Kyung Hwa Jung, M.D., Sang Hee Lee, M.D., Kyung Seoung Oh, M.D.,  
Gyoo Sik Jung, M.D., Jin Do Huh, M.D., Young Duk Cho, M.D.,  
Jong In Kim, M.D.<sup>2</sup>, Sung Rae Cho, M.D.<sup>2</sup>, Hee Kyung Jang, M.D.<sup>3</sup>

<sup>1</sup>Department of Diagnostic Radiology, Gospel Hospital, College of Medicine, Kosin University

<sup>2</sup>Department of Thoracic Surgery, Gospel Hospital, College of Medicine, Kosin University

<sup>3</sup>Department of Anatomic Pathology, Gospel Hospital, College of Medicine, Kosin University

Intraosseous neurilemmoma is a rare benign neoplasm that accounts for less than 1% of all primary bone tumors. The most frequent site of involvement is the mandible. We report a case of intraosseous neurilemmoma of the sternum which was discovered incidentally.

**Index words :** Neurilemmoma  
Sternum, CT  
Neoplasms, diagnosis

Address reprint requests to : Kyung Hwa Jung, M.D., Department of Diagnostic Radiology, College of Medicine, Kosin University,  
34 Amnam-dong, Seo-gu, Busan 602-702, South Korea.  
Tel. 82-51-990-6341 Fax. 82-51-255-2764 E-mail: gradang@netian.com