

2

(keratiniz - 가

ing desquamative squamous metaplasia)

(1).

가

(1 - 3).

60 가 3

4 5 - 9 , 1 - 3 가 ,

(1, 4 - 6). 가 , , 가

2 , 가

(Fig. 2A, 가

B).

1 가 8

58 , 1

가 ,

5 - 9 , 5 - 9

(Fig. 1A).

(Fig. 2D).

(Fig. 1B).

가

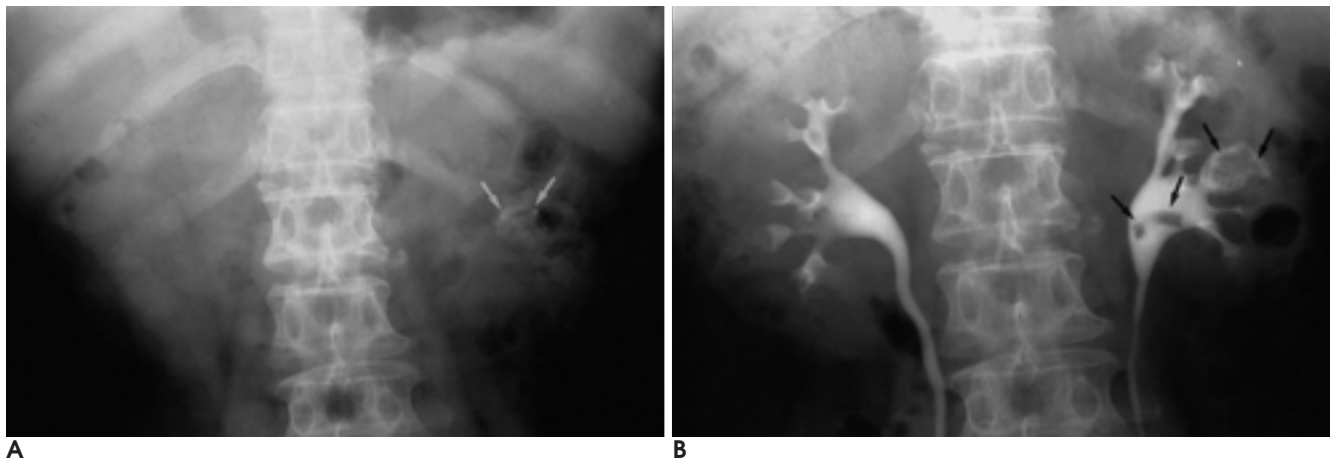
가

(1). Hertle

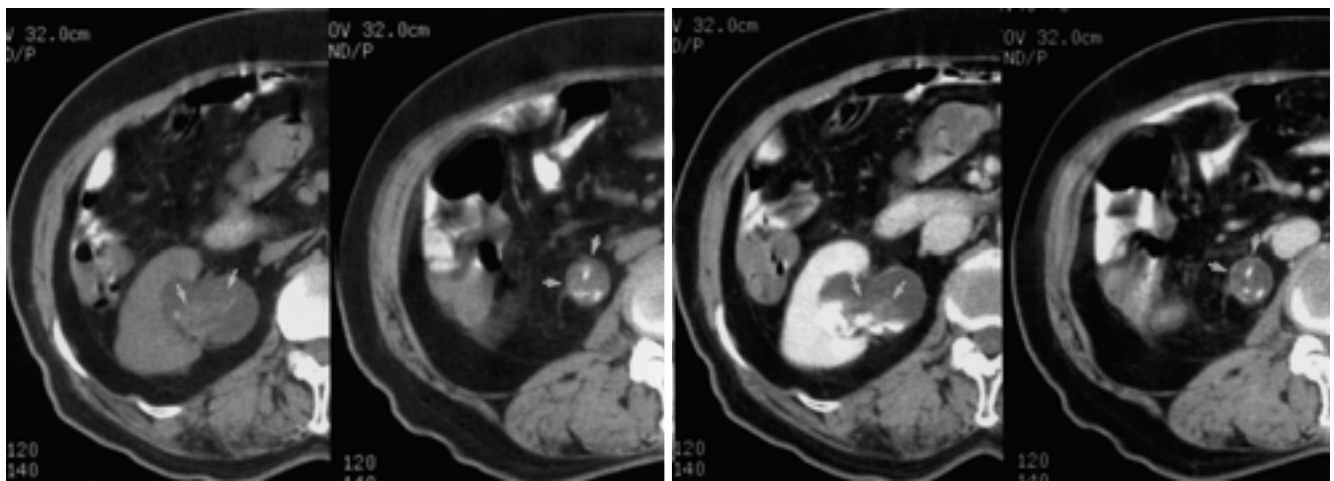
가 (1).

2001 10 22 2001 12 17

377



A
Fig. 1. 58-year-old woman with cholesteatoma of the left kidney
A. KUB shows calcification (arrows) in left kidney shadow.
B. IVP shows multiple lamellated and rectangular filling defects (arrows) in the pelvis and calyces.



A
B
C
D
Fig. 2. 60-year-old woman with cholesteatoma of right renal pelvis and upper ureter
A. Pre-contrast CT scan shows calcified iso-attenuated masses (arrows) in right renal pelvis and dilated ureter.
B. Contrast-enhanced CT scan demonstrates irregular calcified masses (arrows) occupying renal pelvis and ureter.
C. Gross specimen shows multiple whitish material (arrows) in the renal pelvis and upper ureter, and there is no evidence of invasion to adjacent tissue.
D. Pathologic finding shows keratinized desquamative metaplasia (arrows) (H & E, $\times 100$).

(lamellated)

(2 - 4).

(2, 6).

(amorphous) (punctate)

(1, 4, 5),

(1, 5, 6).

(1, 4),

(2 - 4).

(leukoplakia)

. 1982 Hurtle

(keratinizing desquamative squamous metaplasia)

(1).

(7).

(7),

(8, 9).

50%

(1, 5, 6).

(cell debris)

(2, 3, 5).

1. Hertle L, Androulakakis P. Keratinizing desquamative squamous metaplasia of the upper urinary tract: Leukoplakia-cholesteroloma. *J Urol* 1982;127:631-635
2. Houston W. Renal cholesteatoma. *Br J Urol* 1983;55:239-240
3. Willis JS, Pollack HM, Curtis JA. Cholesteatoma of the upper urinary tract. *AJR Am J Roentgenol* 1981;136:941-944
4. Aprikian AG, Jothy S, Elhilal MM. Congenital keratinizing desquamative squamous epithelium of the entire urinary tract. *J Urol* 1991;146:423-425
5. Haugen SG, Wasserman NF. Keratinizing desquamative squamous metaplasia of the upper urinary tract. *Urol Radiol* 1986;8: 211-213
6. Sugamoto T, Yokoyama M, Nishio S, Takeuchi M. Cholesteatoma of the ureter: A case report. *Int J Urol* 1997;4(6):621-622
7. Lupovitch A, Domzalsky H, Tippins R. Cholesteatoma of the renal pelvis: A case with long-term follow up. *J Urol* 1988;140:360-361
8. Taguchi Y, Kotha V, Tomka B, Seemayer T. Conserving nephrons in cholesteatoma. *J Urol* 1980;123:258-260
9. Neerhut G, Politis G, Alpert L, Griffith DP. Cholesteatoma of the renal pelvis: Endoscopic management. *J Urol* 1988;139:1032-1034

Renal Cholesteatoma: Two Cases Report¹

In Young Bae, M.D., Mi Young Kim, M.D., Soon Gu Cho, M.D., Chang Hae Suh, M.D.,
Hyeong Gon Kim, M.D.², Won Hee Park, M.D.²

¹*Department of Radiology, Inha University College of Medicine*

²*Department of Urology, Inha University College of Medicine*

Cholesteatoma of the urinary tract is an extremely rare disease occurring in the bladder and renal pelvis. We report the radiologic findings in two cases of renal cholesteatoma involving the renal pelvis, calyces and ureter, and correlate these with the histopathologic findings.

Index words : Kidney, diseases
Kidney, neoplasms

Address reprint requests to : Mi Young Kim, M.D., Department of Radiology, Inha Hospital,
7336 Taepyung-dong, Sujung-gu, Sungnam City, Kyunggi-do 461-192, Korea.
Tel. 82-31-720-5225 Fax. 82-31-755-2812 E-mail: mykim@inha.ac.kr