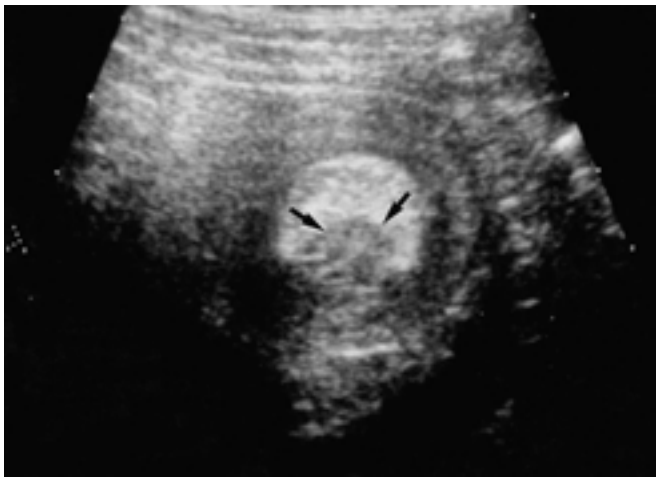
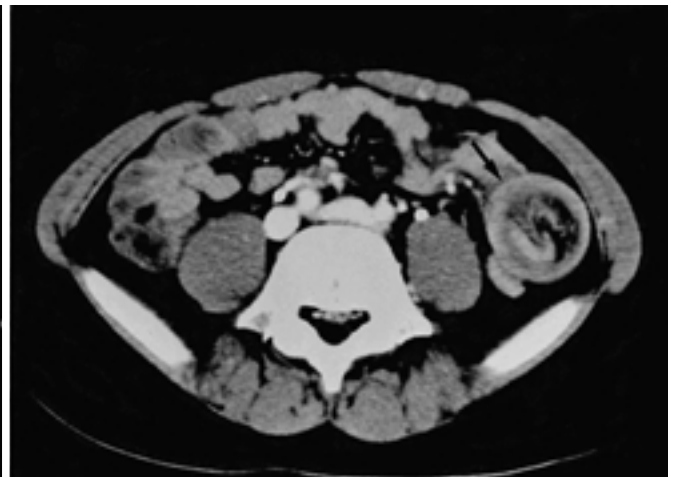


phoid tissue) 가 MALT (mucosa associated lym-
MALT MALT
9
MALT 1
(1). B 가 2 × 1.5
가 가 cm 가 (intussusceptum)
가 가 (2). MALT (Fig. 1A).
(mucosa associated lymphoid tissue) ,
MALT 2 × 1.5
B 1983 Isaacson Wright (3)가 cm 가 (Fig.
MALT 1B, C).
가
(4, 5). MALT cm 2 × 2.5 cm 30
가
9 가 2 MALT (Fig.
가 1 1D).
가
가
가

Peyer's patch
 (3).
 B (germinal center), 가 (mantle cell)
 MALT (marginal zone), 3 MALToma
 (lymphoepithelial lesion), (centrocyte-like cell), (reactive follicles), (plasma cell infiltration) (follicular colonization) (6).
 : MALT
 MALT, 2% (7).
 Nakamura (8)
 MALT 가
 MALT 가 (9).
 MALT
 MALToma (6).
 (6).



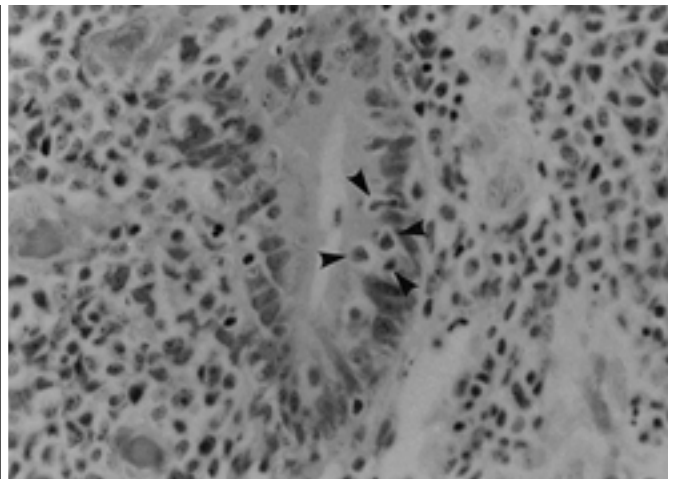
A



B



C



D

Fig. 1. High grade MALT lymphoma of the ileum presenting as intussusception in a 9-year-old boy.

A. Ultrasonography of the left lower quadrant abdomen shows donut-shaped small bowel intussusception with an internal low echoic mass that was thought to be the leading point (arrows).

B. Contrast enhanced CT scan demonstrates the small bowel-to-small bowel intussusception in the left lower abdominal cavity (arrow).

C. A slightly well-enhancing solid soft tissue mass is shown in the proximal portion of the intussusception (arrow).

D. Photomicrograph of a histologic preparation (Hematoxylin and Eosin, $\times 400$) shows diffuse infiltration of atypical lymphoid cells in lamina propria and submucosa with frequent mitoses (arrowheads).

가
가 ,
가
39 (6). Kojima (10)
MALT 12 가 MALT
MALT 가 MALT
MALT
가
MALT 가 (4) HIV
MALT (5)
MALT
가
가
75% 30%
(1). 6
3 2
, 1 4
가
Meckel
가
MALT MALT

1. Kjeldsberg CR, Wilson JF, Berard CW. Non-Hodgkin's lymphoma in children. *Hum Pathol* 1983;14:612-627
2. Takahashi H, Hansmann ML. Primary gastrointestinal lymphoma in childhood. *J Cancer Res Clin Oncol* 1990; 116:190-196
3. Isaacson PG, Wright DH. Malignant lymphoma of mucosa associated lymphoid tissue. *Cancer* 1983;52:1410-1416
4. Mezlini A, Kchir N, Chaabouni M, Ben RA, Ben AF. Primary gastric MALT lymphoma in children. Report of 2 cases. *Arch Anat Cytol Pathol* 1999;47: 38-43
5. Feldstein JT, Temeck BK, Sloas MM, et al. Pulmonary malignant lymphoma of mucosa associated lymphoid tissue arising in a pediatric HIV-positive patient. *Am J Surg Pathol* 1995;19:357-363
6. MALToma 1997;36:257-263
7. Radaszkiewicz T, Dragosics B, Bauer P. Gastrointestinal malignant lymphoma of the mucosa associated lymphoid tissue: Factors relevant to prognosis. *Gastroenterology* 1992;102:1628-1638
8. Nakamura S, Matsumoto T, Takeshita M, Kurahara K, et al. A clinicopathologic study of small intestine lymphoma: Prognostic significance of mucosa associated lymphoid tissue-derived lymphoma. *Cancer* 2000;15:286-294
9. Shepherd NA, Hall PA, Coates PJ, Levison DA. Primary malignant lymphoma of the colon and rectum: A histopathological and immunohistochemical analysis of 45 cases with clinicopathological correlations. *Histopathology* 1988;12:235-252
10. Kojima M, Nakamura S, Kurabayashi Y, et al. Primary malignant lymphoma of intestine: Clinicopathologic and immunohistochemical studies of 39 cases. *Pathol Int* 1995;45:123-130

High Grade MALT Lymphoma of the Ileum in a Child Presenting as Intussusception: A Case Report¹

Kyo Nam Kim, M.D., Joung Joo Woo, M.D., Yong-Whee Bahk, M.D.,
Soon Yong Kim, M.D., You-Mee Kang, M.D.²

¹Department of Radiology, Sung-Ae Hospital

²Department of Pathology, Sung-Ae Hospital

Lymphoma is the third most common childhood malignancy after leukemia and brain tumor. In contrast to adult non-Hodgkin's lymphoma, that occurring in children is usually found extranodally. The most common site is the abdomen, including the gastrointestinal tract, kidney and pancreas, and the next most common is the extranodal head and neck. Gastrointestinal non-Hodgkin's lymphoma in adults is usually considered to be MALT lymphoma, a distinct B-cell type, but the occurrence of this variety in the small bowel of children is relatively rare. We report a case of high-grade MALT lymphoma occurring in a nine-year-old boy who presented with ileoileal intussusception.

Index words : Children, gastrointestinal tract
Intussusception
Intestines, US
Intestines, CT
Lymphoma, CT

Address reprint requests to : Joung Joo Woo, M.D., Department of Radiology, Sung-Ae Hospital
451-5, Shingil-dong, Yongdeungpo-gu, Seoul 150-051, Korea.
Tel. 82-2-840-7181 Fax. 82-2-840-7187 E-mail: kn1009@hananet.net