



: 1 1

1 - 2%

(Fig. 1D). CT

(1).

cm

(cleft)  
(Fig. 2).

1

1 가 38

Apgar 7/8

2%

1 -

37.2 °C , 130 /min , 40 /min .

. Ashkenazi (2) ,  
0.09%

가 X  
(Fig. 1A), 35%가

4 150 가

X  
(Fig. 1B).

(gavage tube)

X ,

가 24 - 36

(urografen shering AG)

(Fig. (1).

가 가

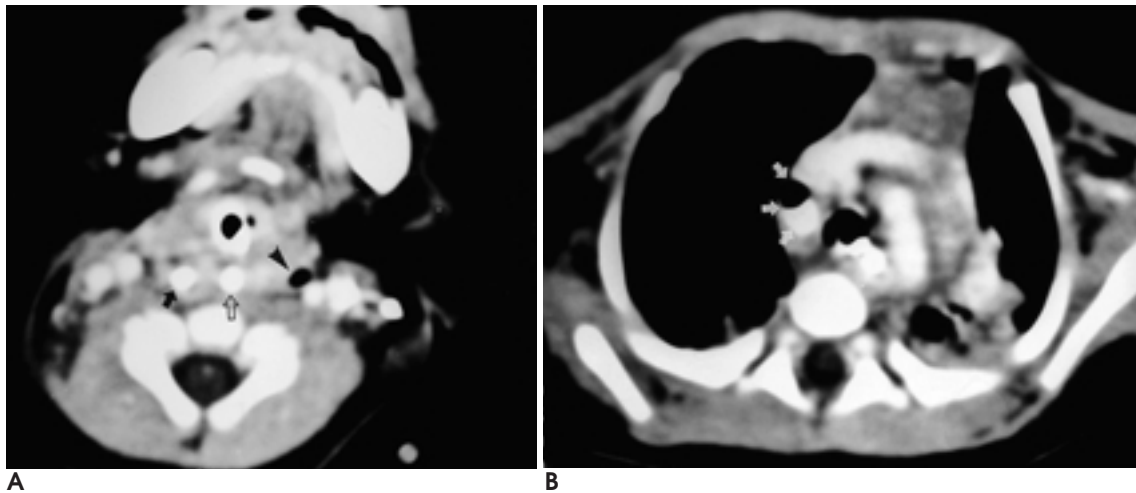
1C).

가

2001 8 6

2002 1 7





**Fig. 2. A.** Contrast enhanced CT of the neck after insertion of gavage tubes through the fistula and esophagus, respectively, demonstrate the location of fistula (black arrow) and esophagus (open arrow). There also is a small air cleft adjacent to the left common carotid artery (arrow head).

**B.** Lower level scan shows a contrast medium filled pouch (white arrows) just right lateral to the trachea and the aortic arch in left.

(3, 4).

Park (5) 17 가

가

4 가

(5).

1. Behrman RE, Kliegman RM, Jenson HB. *Textbook of Pediatrics*. 16th ed. Philadelphia: Saunders, 2000;508
2. Ashkenazi S, Merlob P, Stark H, et al. Renal anomalies in neonates with spontaneous pneumothorax-incidence and evaluation. *Int J Pediatr Nephrol* 1983 Mar;4(1):25-7
3. Benson MT, Dalen K, Mancuso AA, Kerr HH, Cacciarelli AA, Mafee MF. Congenital anomalies of the branchial apparatus: Embryology and pathologic anatomy. *Radiographics* 1992;12:943-960
4. Som DM, Curtin HD. *Head and neck imaging* 3rd ed. St. Louis: Mosby;1996;748-757
5. Park SW, Han MH, Sung MH, et al. Neck infection associated with pyriform sinus fistula: Imaging features. *AJNR Am J Neuroradiol* 2000;21:817-822

J Korean Radiol Soc 2002;46:491 - 493

## Congenital Pyriform Sinus Fistula Complicated with Pneumothorax and Pneumopericardium in a Neonate: A Case Report<sup>1</sup>

J C Kim, M.D., H Kim, M.D., S W Kang, M.D.

<sup>1</sup>Department of Radiology, Daejeon St. Mary's Hospital, The Catholic university of Korea

We describe a neonatal case of congenital pyriform sinus fistula complicated by pneumothorax and pneumopericardium and review the literature.

**Index words :** Infants, newborn, respiratory system  
Pneumothorax

Address reprint requests to : S W Kang, M.D., Department of Radiology, Daejeon St. Mary's Hospital, The Catholic university of Korea.  
520-2 Daeheung-dong, Jung-gu, Daejeon 301-723, Korea.  
Tel. 82-42-220-9625 Fax. 82-42-257-0511 E-mail: kang8801@unitel.co.kr