



가
10
(bronchus -
associated lymphoid tissue, BALT) 1
(Fig. 1E).
(1).
(non - Hodgkin's lymphoma, NHL)
46 가
10 (2 - 8).
(bronchus - associated lymphoid tissue, BALT) 1 CT,
X - CT
tissue, BALT)
(bronchus - associated lymphoid
(Fig. 1F).
2 X
79 가
X -
가 (Fig. 1A) CT
CT
(Fig. 1B).
(Fig. 1C).
10 가 (1 - 8).
(lymphoblastic lymphoma)
(mucosa - associated lymphoid tissue
(BALToma)
B
(lymphoepithelial
lymphoepithelial lesion
B
BALT
2001 7 12 2001 9 24
41

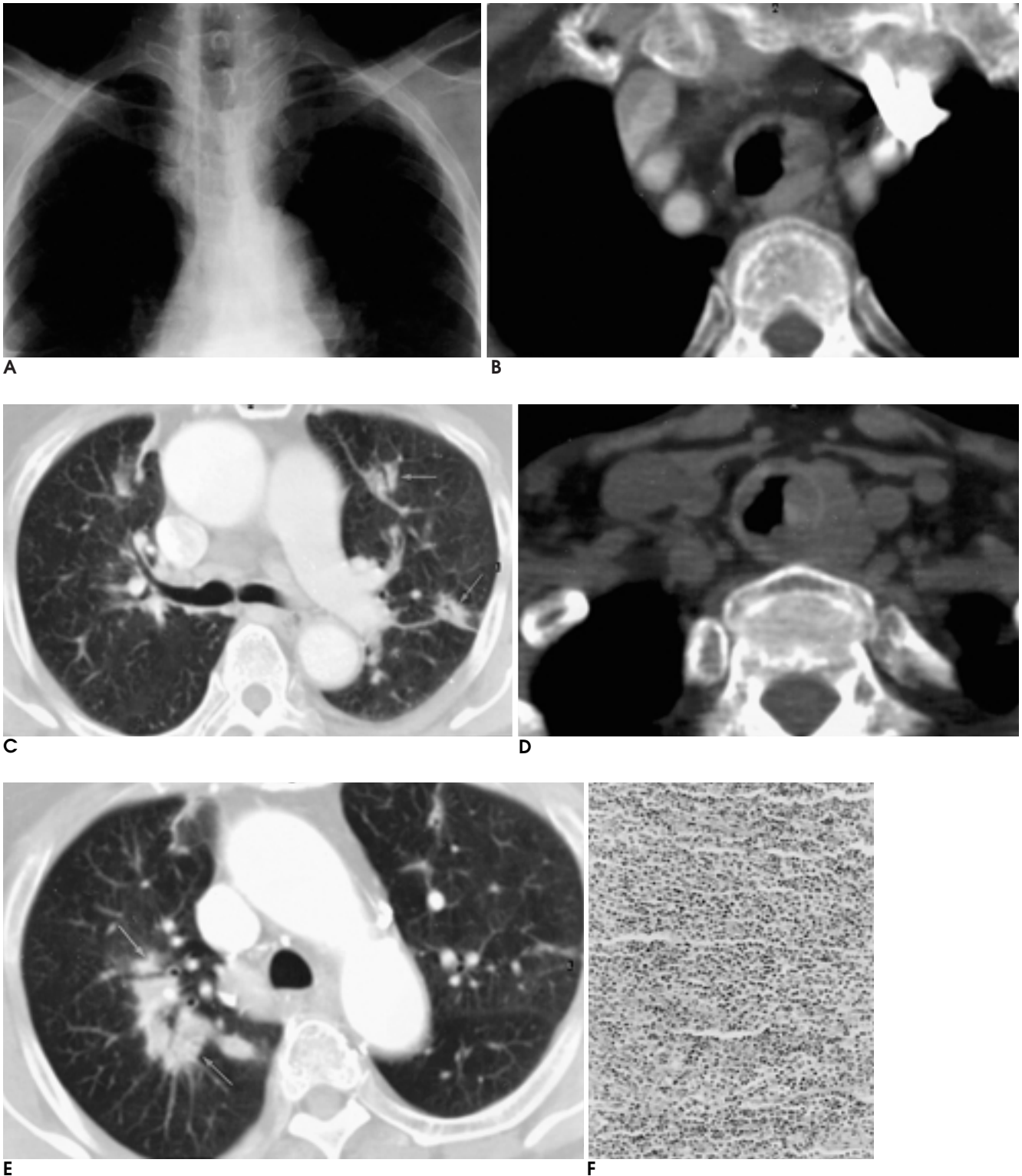


Fig. 1. A. Chest radiograph shows smooth indentation of the left wall of the trachea.
B. CT scan shows smooth thickening of the left wall of the trachea. Surrounding fat plane appears intact.
C. CT scan shows multiple nodules with irregular margin in both upper lobes. Note the nodules with air bronchogram (arrow).
D. Follow up CT scan shows increased size of the tracheal mass and obliteration of the tracheo-esophageal groove. Esophageal wall invasion was proved by operation.
E. Follow-up CT scan shows increased size of the nodules in the right upper lobe. Note the nodules with air bronchogram (arrow).
F. Microscopic high-power view of the lesion showing diffuse infiltrate of small to intermediate-sized B lymphoid cells with irregular nuclei and pale to clear cytoplasm. (H & E, $\times 200$)

Rose I II CT 가
 . I BALT 가
 , II CT
 (8).
 I BALT
 가
 (8). II
 (8). Rose
 3 1 가
 II (8).
 I ,
 2
 가
 (3 - 8). Lee CT
 BALT 가
 Lee (9). BALT

1. Houston HE, Payne WS, Harrison EG, Olson AM. Primary cancer of the trachea. *Arch Surg* 1969;99:132-139
2. Freeman C, Berg JW, Cutler SJ. Occurrence and prognosis of extranodal lymphomas. *Cancer* 1972;29:252-260
3. Pradhan DJ, Rabuzzi D, Meyer JA. Primary solitary lymphoma of the trachea. *J Thorac Cardiovasc Surg* 1975;70:938-940
4. Fidas P, Wright C, Harris NL, Urban W, Grossbard ML. Primary tracheal non-Hodgkin's lymphoma. A case report and review of the literature. *Cancer* 1996;77:2332-2338
5. Gomez - Roman JJ, Perez-Montes R, Perez-Exposito MA, Richard C, Baro J, Val-Bernal JF. Primary lymphoplasmacytoid lymphoma of the trachea with immunoglobulin G paraprotein. *Pathol Int* 1999;49:1100-1104
6. Kaplan MA, Pettit CL, Zukerberg LR, Harris NL. Primary lymphoma of the trachea with morphologic and immunophenotypic characteristics of low grade B cell lymphoma of mucosa-associated lymphoid tissue. *Am J Surg Pathol* 1992;16:71-75
7. Mason AC, White CS. CT appearance of endobronchial non-Hodgkin lymphoma. *J Comput Assist Tomogr* 1994;18:559-561
8. Rose RM, Grigras D, Strattemeier E, Harris NL, Linggood RM. Endobronchial involvement with non-Hodgkin's lymphoma. A clinical-radiologic analysis. *Cancer* 1986;57:1750-1755
9. Lee DK, Im JG, Lee KS, Lee JS, Seo JB, Goo JM, Kim TS, Lee JW. B-cell lymphoma of bronchus-associated lymphoid tissue (BALT): CT features in 10 patients. *J Comput Assist Tomogr* 2000;24:30-34

Tracheal Involvement of Bronchus-Associated Lymphoid Tissue Lymphoma: A Case Report¹

Sohn kyungsik, M.D., Kyungneough Jeon, M.D., Duk-sik Kang, M.D.

¹*Department of Radiology, College of Medicine, Kyungpook National University*

Primary malignant tumors of the trachea are rare, the most prevalent histologies being squamous cell and adenoid cystic carcinoma. A review of the literature revealed only ten cases of primary tracheal or bronchial non-Hodgkin's lymphoma. We describe a case in which tracheal involvement of bronchus-associated lymphoid tissue lymphoma, a subtype of non-Hodgkin's lymphoma, occurred.

Index words : Trachea, neoplasm
Trachea, CT
Lymphatic system, neoplasms
Lymphoma, CT

Address reprint requests to : Sohn kyungsik, M.D., Department of Radiology, Kyungpook National University Hospital,
50, Samduk-Dong 2Ga, Chung-Gu, Taegu 700-721, Korea.
Tel. 82-53-420-5390 Fax. 82-53-422-2677 E-mail: kyungsiksohn@lycos.co.kr