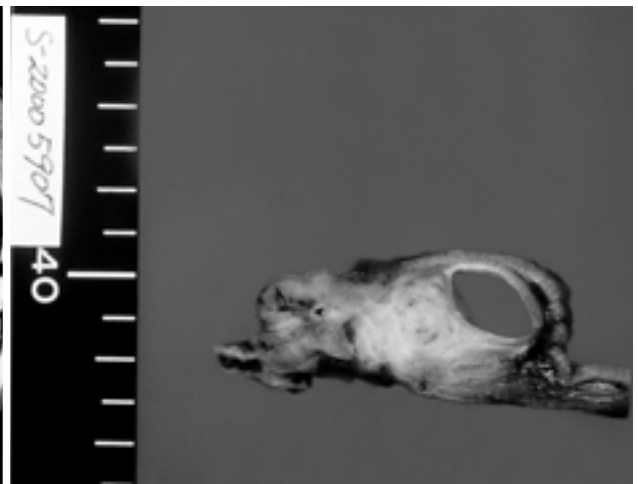


: 1 1  
 2 3 4  
 64  
 1  
 CT  
 (1 - 3).  
 가 (Fig. 1A).  
 CT  
 (1 - 가 CT  
 4). CT  
 (4).  
 가  
 (4 - 7),  
 3×3×1.5 cm  
 (Fig. 1B).  
 (acinar  
 cell) 가  
 1 CT  
 (Fig. 1C).  
 65 20  
 3 cm  
 가  
 가  
 (1).  
 (metaplasia)  
 CT  
 가  
 (1 - 3).  
 가  
 (1 - 4).  
 18  
 (7),  
 (acinar cell carci-  
 noma) 1 (4 - 7).  
 2001 5 31 2001 6 20

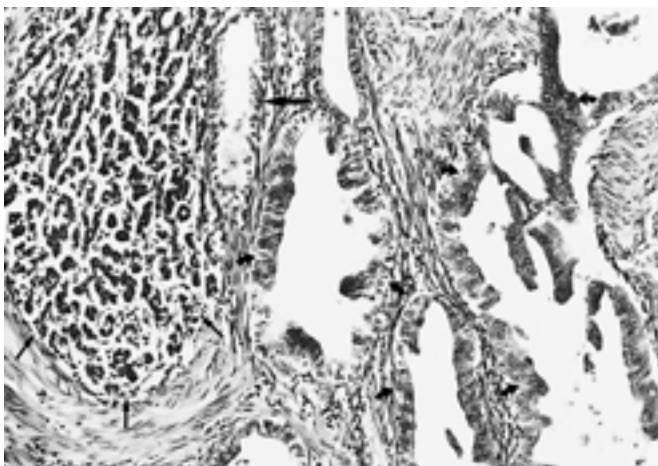
가 , 가 ,  
(4). 가  
가  
CT (1 - (4, 9).  
4). CT  
1 - 3 cm 가  
6 cm  
(1 - 3).  
가  
(1, 2). 가 3 cm  
, CT  
가  
(4, 8). CT  
(5). 가



A



B



C

**Fig. 1.** Ductal adenocarcinoma arising from heterotopic pancreas in the stomach in a 64-year-old man.

**A.** Contrast-enhanced CT scan with water as an oral contrast agent shows a submucosal mass with a small cystic portion (black arrow) in the gastric wall of prepyloric antrum along the greater curvature aspect. Note contrast-enhanced normal overlying mucosa (white arrows).

**B.** Cut surface of gross specimen shows an oval shaped, submucosal mass with small cystic portion, which corresponds to CT findings.

**C.** Photomicrograph of histopathologic specimen shows heterotopic pancreatic tissue composed of pancreatic acini (small arrows), pancreatic duct (large arrow), and malignant transformation to ductal adenocarcinoma (short curved arrows). (H & E stain,  $\times 100$ )

가

1. Dolan RV, ReMine WH, Dockerty MB. The fate of heterotopic pancreatic tissue: a study of 212 cases. *Arch Surg* 1974; 109:762-765
2. Thoeni RF, Gedgaudas RK. Ectopic pancreas: usual and unusual features. *Gastrointest Radiol* 1980; 5:37-42
3. Kilman WJ, Berk RN. The spectrum of radiographic features of aberrant pancreatic rests involving the stomach. *Radiology* 1977; 123:291-296
4. Cho JS, Shin KS, Kwon ST, et al. Heterotopic pancreas in the stomach: CT findings. *Radiology* 2000; 217:139-144
5. Herold G, Kraft K. Adenocarcinoma arising from ectopic pancreas: two case reports with a review of the literature. *Z Gastroenterol* 1995; 33:260-264
6. Ura H, Denno R, Hirata K, Saeki A, Hirata K, Natori H. Carcinoma arising from ectopic pancreas in the stomach endosonographic detection of malignant change. *J Clin Ultrasound* 1998; 26:265-268
7. Makhlof HR, Almeida JL, Sobin LH. Carcinoma in jejunal pancreatic heteropia. *Arch Pathol Lab Med* 1999; 123:707-711
8. Cloudon M, Varain AL, Bigard MA, et al. Cyst formation in gastric heterotopic pancreas: report of two cases. *Radiology* 1988; 169:659-660
9. Park SH, Han JK, Choi BI, et al. Heterotopic pancreas of the stomach: CT findings correlated with pathologic findings in six patients. *Abdom Imaging* 2000; 25:119-123

J Korean Radiol Soc 2001;45:51 - 53

## Ductal Adenocarcinoma Arising from Heterotopic Pancreas in the Stomach: A Case Report<sup>1</sup>

Young-Seob Ahn, M.D., June-Sik Cho, M.D., Kyung-Sook Shin, M.D.,  
Seung-Moo Noh, M.D.<sup>2</sup>, Hyun-Yong Jeong, M.D.<sup>3</sup>, Kyu-Sang Song, M.D.<sup>4</sup>

<sup>1</sup>Department of Diagnostic Radiology, Chungnam National University College of Medicine

<sup>2</sup>Department of General Surgery, Chungnam National University College of Medicine

<sup>3</sup>Department of Internal Medicine, Chungnam National University College of Medicine

<sup>4</sup>Department of Pathology, Chungnam National University College of Medicine

Malignant transformation of heterotopic pancreas is extremely rare. We report a case of ductal adenocarcinoma arising from heterotopic pancreas in the stomach of a 64-year-old man. Preoperative CT scans showed the lesion as a submucosal mass along the greater curvature of the pyloric antrum and protruding into the pyloric canal. After gastric surgery, the resected tumor was histopathologically diagnosed as a ductal adenocarcinoma arising from heterotopic pancreas with cystic dilatation of aberrant pancreatic duct.

**Index words :** Stomach, abnormalities  
Stomach, neoplasms  
Stomach, CT

Address reprint requests to : June-Sik Cho, M.D., Department of Diagnostic Radiology, Chungnam National University Hospital.  
640, Daesa-dong, Jung-gu, Taejon 301-040, Korea.  
Tel. 82-42-220-7333 Fax. 82-42-253-0061