



가
1 CT
(germinal center)
1987 Truong
(keratin balls)
(1)
40 가 11
가 1
(2).
가
68 가
6.5×6×6 cm
가 가
(Fig. 1A). CT
(lesser sac) 3 가 가 (1).
가 (branchial cleft) 가
(Fig. 1B). 가
CT (Fig. 1C). inclusion body 가 (epithelial
가 Koga (3)
가 Anagnostopoulos (4) 25
가 24
56.2 (: 35 - 73)
40%
가 32%, 가 48%, 20%

가
가
2000 가
2000 9 22 2000 11 29
217

가

(1), 가 (5), Koga (3)

(3, 6, 7),
(3, 6, 8)

가

CT

(3-7, 9)

(3, 6, 8, 9)

(3, 8)

CT

CT

Koga (3)

가

(10).

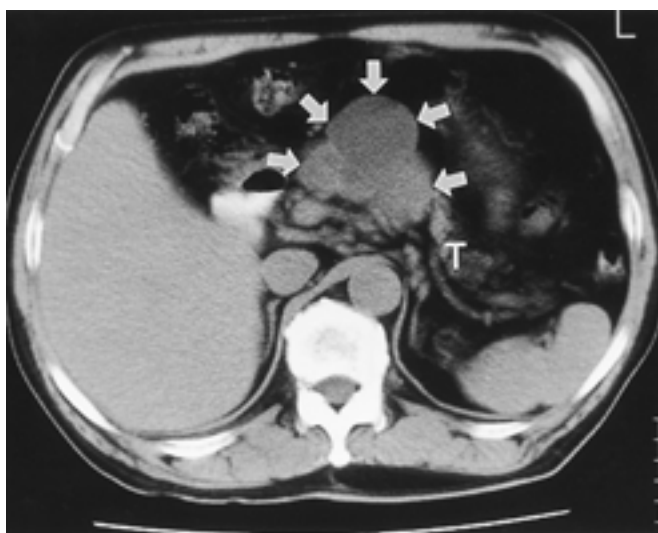
가

(4, 10).

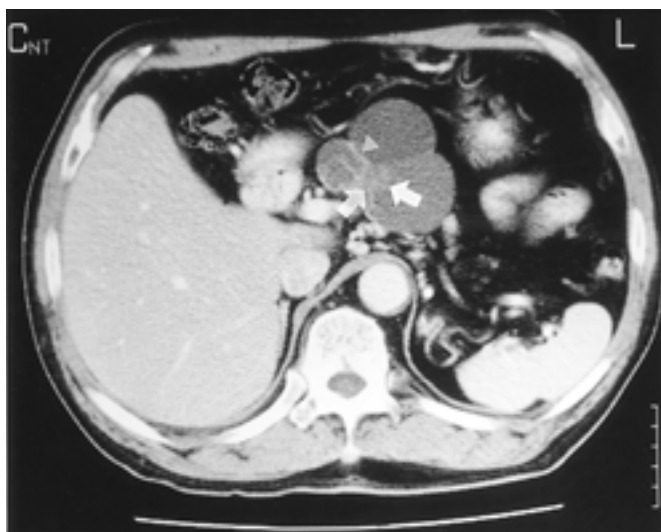
(10).



A



B



C

Fig. 1. A. Ultrasonography shows a well-defined mass that is composed of solid mass-like echogenic (arrows) and anechoic portions (arrowheads) with posterior acoustic enhancement. Papillary projections are noted within the anechoic portion of the mass.

B. Precontrast CT scan shows a well-circumscribed cystic mass (arrows) in the body of the pancreas, bulging anteriorly to the lesser sac. Different levels of attenuation are noted at each cystic cavities of the mass. (T: tail of pancreas)

C. Postcontrast CT scan shows enhancing septum (arrowhead) and irregular solid component (arrows) within the cystic mass.

CT

1. Truong LD, Rangdaeng S, Jordan PH. Lymphoepithelial cyst of the pancreas. *Am J Surg Pathol* 1987;11:899-903
2. Adsay NV, Hasteh F, Cheng JD, Klimstra DS. Squamous-lined cysts of the pancreas: lymphoepithelial cysts, dermoid cysts (teratomas), and accessory-splenic epidermoid cysts. *Semin Diagn Pathol* 2000;17:56-65
3. Koga H, Takayasu K, Mukai K, et al. CT of lymphoepithelial cysts of the pancreas. *J Comput Assist Tomogr* 1995;19:221-224
4. Anagnostopoulos PV, Pipinos II, Rose WW, Elkus R. Lymphoepithelial cyst in the pancreas. a case report and review of the literature. *Dig Surg* 2000;17:309-314
5. YH Kim, YH Auh, KW Kim, MG Lee, KS Kim, SY Park. Lymphoepithelial cysts of the pancreas: CT and sonographic findings. *Abdom Imaging* 1998;23:185-187
6. Ueno S, Muranaka T, Maekawa S, et al. Radiographic features in lymphoepithelial cyst of the pancreas. *Abdom Imaging* 1994;19:232-234
7. Schinke-Nickl DA, Muller MF. Case report: lymphoepithelial cyst of the pancreas. *Br J Radiol* 1996;69:876-878
8. Fukukura Y, Inoue H, Miyazono N, et al. Lymphoepithelial cysts of the pancreas: demonstration of lipid component using CT and MRI. *J Comput Assist Tomogr* 1998;22:311-313
9. Goodman P, Kumar D, Balachandran S. Lymphoepithelial cyst of the pancreas. *Abdom Imaging* 1994;19:157-159
10. Gore RM, Levine MS. *Textbook of gastrointestinal radiology*. 2nd ed. Philadelphia: W.B. Saunders, 2000:1728-1841

J Korean Radiol Soc 2001;44:217 - 219

Lymphoepithelial Cyst of the Pancreas: A Case Report¹

Kang Hoon Lee, M.D., Kyung Sup Song, M.D., Young Ha Park, M.D.²

¹Department of Radiology, The Catholic University of Korea, St. Paul 's Hospital

²Department of Diagnostic Radiology, The Catholic University of Korea, St. Vincent 's Hospital

Lymphoepithelial cyst of the pancreas is a very rare lesion of unknown etiology. It is difficult, on the basis of radiologic images, to differentiate between lymphoepithelial cyst and pancreatic pseudocyst or other cystic neoplasms, particularly if these are mucinous. We describe the sonographic and CT findings in a case of surgically proven lymphoepithelial cyst of the pancreas.

Index words : Pancreas, CT
Pancreas, cysts
Pancreas, US

Address reprint requests to : Kang Hoon Lee, M.D., Department of Radiology, St. Paul 's Hospital, The Catholic University of Korea, 620-56, Jeonnon-dong, Dongdaemun-gu, Seoul 130-709, Korea.
Tel. 82-2-958-2084 Fax. 82-2-3293-2810

