

: 1 1

.

21 가

가 , 12

(feeding artery) 12
3 cm 가

(1), 가 (2).

(Fig. 3).

(3, 4).

1

21 가 1997
가 , 가 가
가 1998 , 가 ,
가 ,
가

(Fig. 1).

(air - fluid level) (Fig. 2). 12



Fig. 1. Chest radiograph shows multiple cystic lesion with internal air-fluid level and air-crescent in the right lower lung field.

0.6 cm 가 , 0.6 cm 가 (Fig. 4).
 3 cm 가 , (Fig. 4),
 가
 7 cm 가 , 6×8× 가

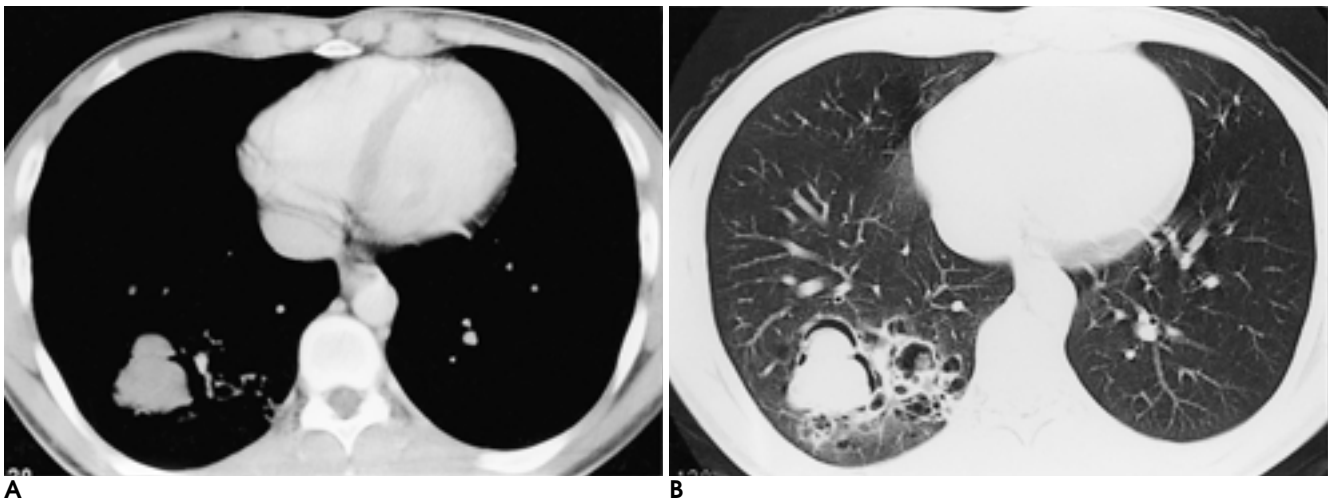


Fig. 2. Contrast-enhanced CT scans of mediastinal window (A) and lung window (B) demonstrate the intracavitary low attenuating lesion with air-crescent in the right lower lobe.

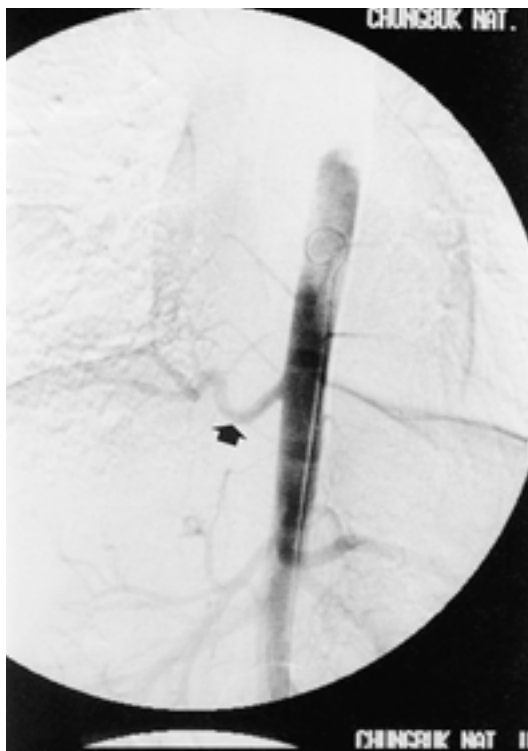


Fig. 3. Thoracic aortography shows feeding artery (arrow) supplying pulmonary lesion in the right lower lobe that arises from descending aorta at the level of 12th thoracic vertebra.

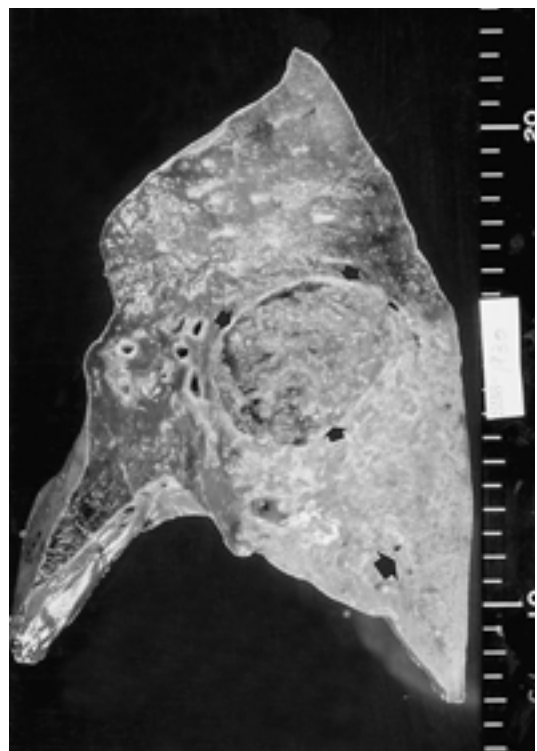


Fig. 4. Cut surface of the resected lobe shows the feeding artery (arrow) that enters a relatively well defined area of consolidation. The consolidation contains a large cyst that is filled with brownish mud-like fragile materials representing aspergilloma (small arrows).

가 ,
가 .

(3, 5).

(6).

75%

(7),

가 ,

(7, 8).

(9).

가

가

가

가 (2).

8 (3, 4, 10 - 15)

9

, 9

75%

7 (), 1 ,
1

1. Gerle RD, Jaretzki A III, Ashley CA, Berne AS. Congenital bronchopulmonary foregut malformation: pulmonary sequestration communicating with gastrointestinal tract. *N Eng J Med* 1968;278:1413-1419
2. . CT .
1995;33:903-909
3. Park JY, Won JH, Park JG, Kim CH, Jung TH, Jung MH, Jheon SH, Kang DS. Aspergilloma within intralobar pulmonary sequestration. *Korean J Intern Med* 1996;11:183-185
4. Freixinet, J, de Cos J, Rodriguez de Castro F, Julia G, Romero T. Colonisation with aspergillus of an intrapulmonary sequestration. *Thorax* 1995;50:810-811
5. Wimbish KJ, Agha FP, Brady TM. Bilateral pulmonary sequestration: computed tomographic appearance. *AJR Am J Roentgenol* 1983;140:689-690
6. Savic B, Birtel FJ, Tholen W, Funke HD, Knoche R. Lung sequestration: report of seven cases and review of 540 published cases. *Thorax* 1979;34:96-101
7. Felker RE, Tokin IL. Imaging of pulmonary sequestration. *AJR Am J Roentgenol* 1990;154:241-249
8. Stocker JT. Sequestration of the lung. *Semin Diagn Pathol* 1988;3:106-121
9. Ikezoe J, Murayama S, Godwin JD, Done SL, Verschakelen JA. Bronchopulmonary sequestration: CT assessment. *Radiology* 1990;176:375-379
10. Coffernils M, Ravez P, Riviere A, Pamart D, Depierreux M, Rocmans P. Aspergillus colonization of a pulmonary sequestration. A propos of a case of associated with erythema nodosum. *Rev Mal Respir* 1990;7:173-4
11. Kadoyama C, Fujino M, Hasejima N, et al. Intralobar pulmonary sequestration associated with asymptomatic aspergillosis: a case report. *Kyobu Geka* 1996;49:959-62
12. Kanazawa S, Nagae T, Mukai N, Sugihara Y, Otani H, Tsunoda T. Pulmonary sequestration associated with aspergillosis. *Jpn J Thorac Cardiovasc Surg* 2000;48:251-3
13. Hwang JJ, Wang TH, Wu CC, Chen CY. Bronchopulmonary sequestration associated with aspergilloma, with sepcial reference to the finding of radionuclide venography. *Jpn J Med* 1985;24:164-168
14. Tanaka M, Miyamoto H, Sakao Y, Harada R, Hata E. A case report of intralobar sequestration associated with lung aspergillus. *Nippon Kyobu Geka Gakkai Zasshi* 1995;43:366-70
15. Oshima M, Oda H, Watanabe A, Kuwabara M. Intralobar sequestration associated with pulmonary aspergillosis. *Nihon Kokyuki Gakkai Zasshi* 1998;36:358-62

Aspergilloma within Pulmonary Sequestration: A Case Report¹

Ki Young Kim, M.D., Sung Jin Kim, M.D., Bae Il Hun, M.D.,
Gi Seok Han, M.D., Sang Hun Cha, M.D., Kil Sun Park, M.D.

¹*Department of Diagnostic Radiology, College of Medicine, Chungbuk National University*

Routine chest radiography in a 21-year-old man revealed the presence of an asymptomatic mass at the right lower lung field.

Chest radiographs showed multiple cysts with air-fluid level and air-meniscus within the consolidation at the right lower lung field. Chest CT scans demonstrated a non-enhancing solid mass, with air-meniscus, within a thin walled cavity, and multiple cysts with fluid or air-fluid level at the posterior portion of the right lower lobe. An abnormal artery was seen at the level of the 12th thoracic vertebra. Thoracic aortography revealed a feeding artery arising from the descending thoracic aorta and supplying the parenchymal lesion. We report the typical radiologic findings of intralobar pulmonary sequestration with aspergilloma, a condition confirmed by surgery and the pathologic findings.

Index words : Lung, abnormalities
Lung, infection
Aspergillosis
Lung, CT
Pulmonary angiography

Address reprint requests to : Sung Jin Kim, M.D., Department of Diagnostic Radiology, Chungbuk National University,
San 48 Gaeshin-dong, Heungduk-gu, Cheungju, Chungbuk 361-763, Korea.
Tel. 82-43-269-6476 Fax. 82-43-269-6479