



(developmental foregut cysts; bronchogenic, esophageal, gastroenteric and pericardial cysts)

(CT)
CT

1
CT

가

(1).

가 (2 - 5)

3.5 × 3 cm

가 (Fig. 1C).

가

가

1

(pseudostratified ciliated columnar epithelium)

(Fig. 1D)

22 가

26 - 40 (5 - 7)

(CT 가 (respiratory glands)

(2). 15%

가
(48 H.U.)

(6),
(2 - 5), (7, 8)

(Fig. 1A, B).

(tracheobronchial tree)

가
(pericardioperitoneal canal)

(2).

1
2
3

2001 4 16

2001 5 24

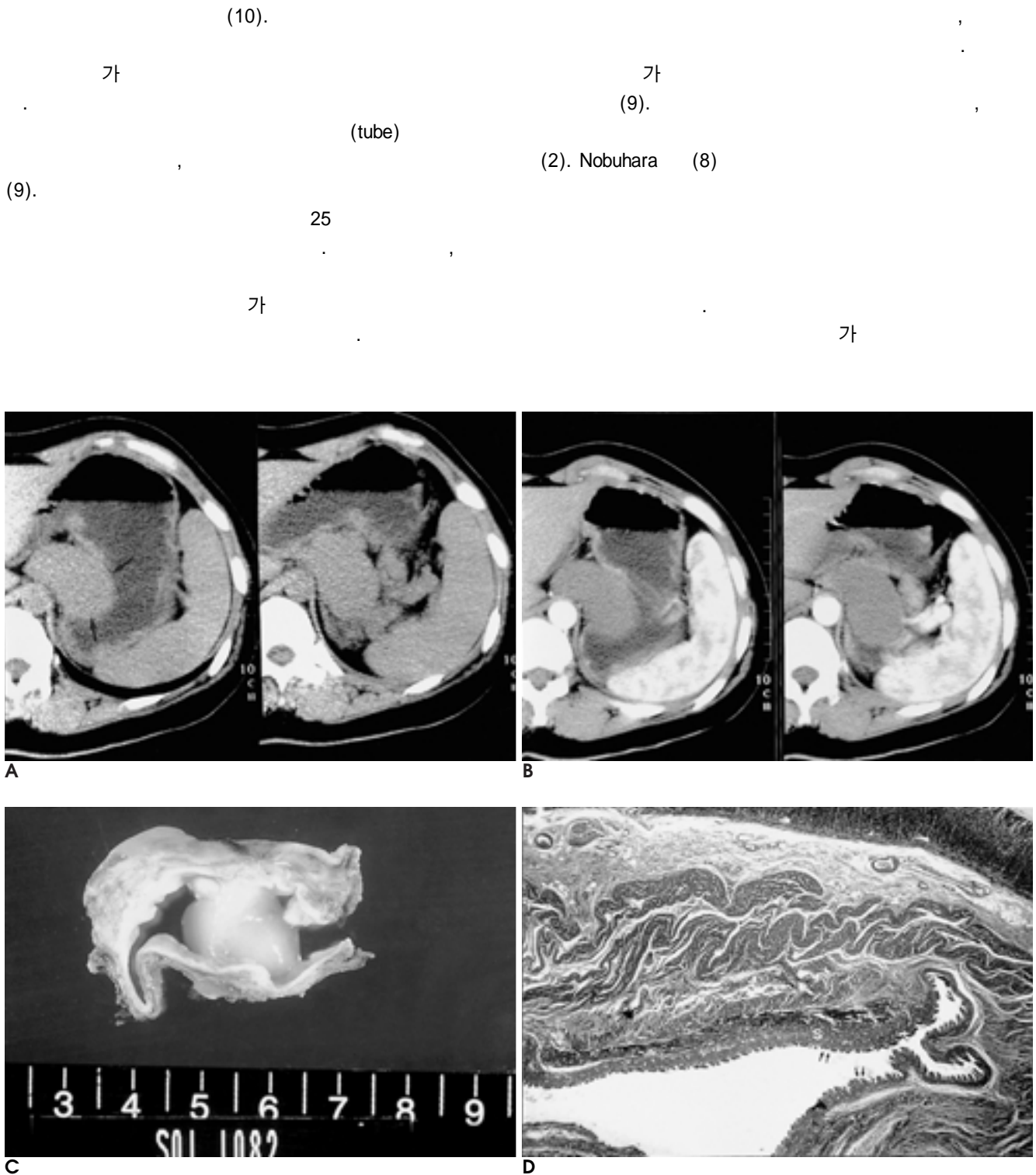


Fig. 1. CT images and pathology specimens of the bronchogenic cyst in a 22-year-old woman.

A. Precontrast CT scan shows a well-demarcated cyst(arrows) located at upper abdomen, adjacent to the posterior wall of the high body of the stomach and the pancreatic tail. CT attenuation(48 H.U.) of the cyst is slightly higher than that of water without calcification or hemorrhage.

B. Postcontrast CT scan reveals a cyst without mural enhancement. Mucosal enhancement of the gastric body is preserved, suggesting the submucosal or extragastric lesion.

C. Gross specimen shows a 3.5 × 3 cm sized cystic mass filled with mucin components.

D. Photomicrography shows that the cyst is located within outer muscle layer of the stomach and the cystic wall is lined with pseudostratified ciliated columnar respiratory epithelium(arrows) and smooth muscle layer(S). The gastric mucosa is not detected in the cystic wall.

가

가 ,

가

(laryngotracheal outgrowth)

가

(5).

가

(cystic teratoma),

가

(neurofibromatosis),

(ectopic pheochromocytoma),

(mesenchymal tumor),

(lym -

phadenopathy)

가

(2).

CT

가

가

(6).

(imaging sequence)

가

CT

가 8 mm

1. Leithiser RE Jr, Capitanio MA, Macpherson IR, et al. "Communicating" bronchopulmonary foregut malformation. *AJR Am J Roentgenol* 1986;146:227-231
2. Murakami R, Machida M, Kobayashi Y, Ogura J, Ichikawa T, Kumazaki T. Retroperitoneal bronchogenic cyst: CT and MR imaging. *Abdom Imaging* 2000;25:444-447
3. Cerwenka H, Uggowitz M, Bacher H, Werkgartner G, El-Shabrawi A, Mischinger HJ. Bronchogenic cyst appearing as a hepatic mass. *Abdom Imaging* 2000;25:86-88
4. Peter K, Shireman. Intramural cyst of the stomach. *Hum Pathology* 1987;18:857-858
5. Kim DH, Kim JS, Nam ES, Shin HS. Foregut duplication cyst of the stomach. *Pathol Int* 2000;50:142-145
6. McAdams HP, Kirejczyk WM, Rosado-de-Christenson ML, Matsumoto S. Bronchogenic cyst: imaging features with clinical and histopathologic correlation. *Radiology* 2000;217:441-446
7. Kollias VD, Panagiotides HC, Kantidakis GH, et al. Intramural bronchogenic cyst of the oesophagus: a rare entity. *Respiration* 1998;65:208-210
8. Nobuhara KK, Gorski YC, La Quaglia MP, Shamberger RC. Bronchogenic cysts and esophageal duplications: common origins and treatment. *J Pediatr Surg* 1997;32:1408-1413
9. Janssen H, Fiedler PN. Isolated intraabdominal esophageal cyst. *AJR Am J Roentgenol* 1998;170:389-390
10. Kajiya Y, Nakajo M, Ichinari N, Uamazumi K, Otuji T, Tanaka T. Retroperitoneal foregut cyst. *Abdom Imaging* 1997;22:111-113

Intramuscular Bronchogenic Cyst of Gastric Body: A Case Report¹

Ji Seon Park, M.D., Dong Ho Lee, M.D., Joo Won Lim, M.D., Young Tae Ko, M.D.,
Sang Mok Lee, M.D.², Moon Ho Yang, M.D.³

¹*Department of Diagnostic Radiology, Kyung Hee University Hospital*

²*Department of General Surgery, Kyung Hee University Hospital*

³*Department of Pathology, Kyung Hee University Hospital*

Developmental foregut cysts, whether bronchogenic, esophageal, gastroenteric or pericardial, are frequently encountered in the mediastinum, and are also occasionally found in the upper abdomen, where they can mimic adrenal, pancreatic, renal or gastric masses. We present the computed tomographic (CT) and histologic findings of an intramuscular bronchogenic cyst of the gastric body, mimicking a retroperitoneal cystic mass. CT scanning demonstrated the presence of a relatively hyperattenuating cystic mass without enhancement. Histologic examination revealed a bronchogenic cyst secreting mucoid materials.

Index words : Stomach, cysts
Stomach, CT

Address reprint requests to : Dong Ho Lee, M.D., Department of Diagnostic Radiology, Kyung Hee University Hospital

1 Heoki-dong Dongaemun-ku, Seoul, 130-702 Korea.

Tel. 82-2-958-8615 Fax. 82-2-968-0787 E-mail: donghlee@hananet.net