



(acute necrotizing encephalopathy)

2

T2 T1

(Fig. 1D,

sodium valproate

E).

가

2

2

13

가

3

(status epilepticus)

1

16

가

가

2

MRI

T2

, T1

가

, T1

가

(Fig. 2A, B). 2

MRI

LDH가 716 H IU/L 가

MRI T2

(external capsule)

T1

T1

, T2

(Fig. 2C).

(spastic quadriplegia)가

(Fig. 1A - C).

T2

가 T1

가

. 10

18

5

11

,

6

(1 -

4).

¹가

²가

2000 11 10

2001 5 3

90% (exanthema subitum) 가 (1, 5, 6). 2-3 (40%), (28%), (20%) 가 0.5-3 24 tis) (acute hemorrhagic leukoencephali- (1). aspartate aminotransferase(82%), alanine aminotrans- ferase(70%), lactate dehydrogenase(77%)가 1 (open - LDH가 가 (open -

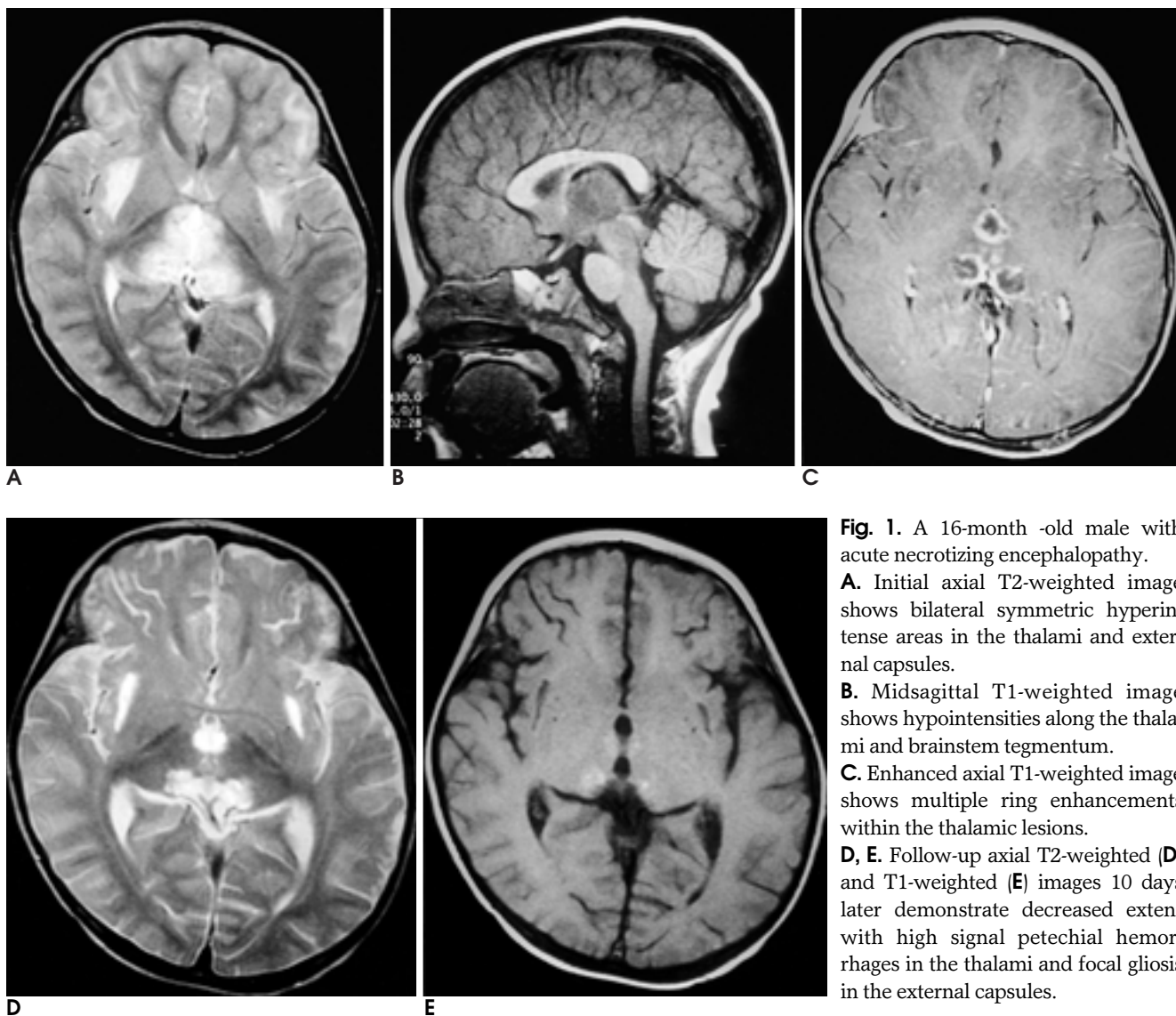


Fig. 1. A 16-month -old male with acute necrotizing encephalopathy. **A.** Initial axial T2-weighted image shows bilateral symmetric hyperintense areas in the thalami and external capsules. **B.** Midsagittal T1-weighted image shows hypointensities along the thalami and brainstem tegmentum. **C.** Enhanced axial T1-weighted image shows multiple ring enhancements within the thalamic lesions. **D, E.** Follow-up axial T2-weighted (**D**) and T1-weighted (**E**) images 10 days later demonstrate decreased extent with high signal petechial hemorrhages in the thalami and focal gliosis in the external capsules.

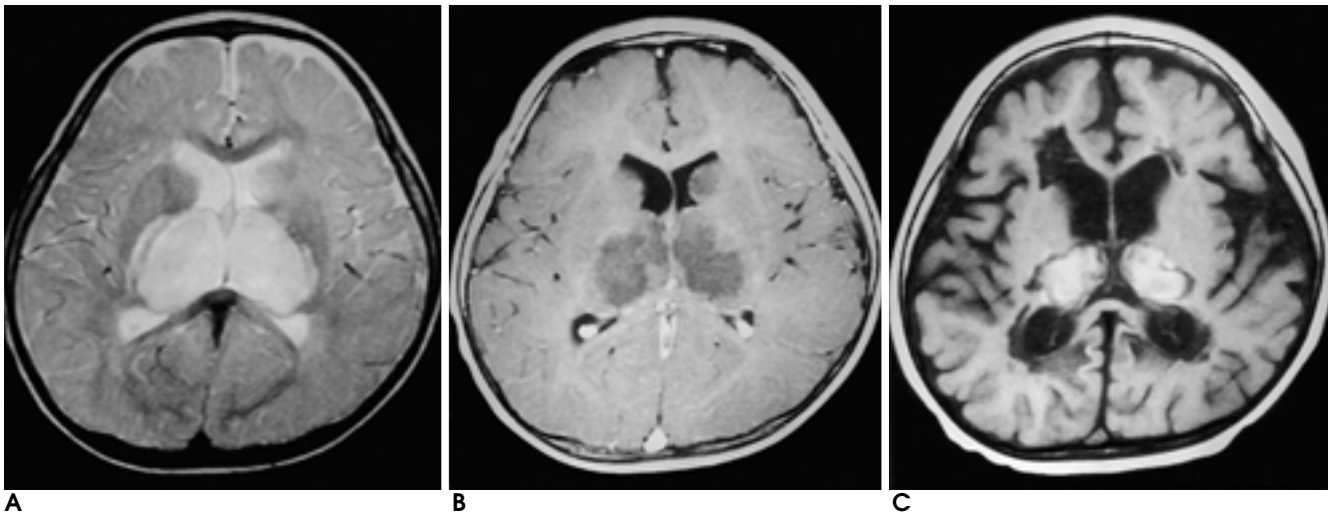


Fig. 2. A 13-month-old female with acute necrotizing encephalopathy.

A. Initial axial T2-weighted image shows bilateral symmetric hyperintensities in the thalami and posterior rim of internal capsule associated with focal high signal intensity in the left caudate nucleus.

B. Enhanced axial T1-weighted image shows hypointensities with peripheral rim enhancements in bilateral thalami and left caudate nucleus.

C. Follow-up axial T1-weighted image 2 months later demonstrates high signal intensities of hemorrhage involving both thalami associated with marked brain atrophy.

. MRI T1 atal necrosis, , ,
T2
2 T1 T2 ADEM
, ,
가
T1 , T2
,
(1).
가
(3).
T2 , T1
(1)
(2)
(3)CT MRI
(gliosis) 1 2 , , (4)
가 . aminotransferase가 가 , ammonia 가
(5)
(acute disseminated encephalomyelitis,
ADEM), (acute hemorrhagic leukoen-
cephalitis), Leigh (Leigh's encephalopathy), infantile stri-

MR

1. Mizuguchi M. Acute necrotizing encephalopathy of childhood: a novel form of acute encephalopathy prevalent in Japan and Taiwan. *Brain Dev* 1997;19:81-92
2. Mizuguchi M, Abe J, Mikkaichi K, et al. Acute necrotizing encephalopathy of childhood: a new syndrome presenting with multifocal, symmetric brain lesions. *J Neurol Neurosurg Psychiatry*

1995;58:555-561

3. Mizuguchi M. Acute encephalopathy with necrosis of bilateral thalami: clinical aspects. *Neuropathology(Kyoto)* 1993;13:327-331
4. Yagishita A, Nakano I, Ushioda T, Otsuki N, Hasegawa A. Acute encephalopathy with bilateral thalamotegmental involvement in infants and children: imaging and pathology findings. *AJNR Am J Neuroradiol* 1995;16:439-447
5. Nakano I, Otsuki N, Hasegawa A. Acute stage neuropathology of a case of infantile acute encephalopathy with thalamic involvement: widespread symmetrical fresh necrosis of the brain. *Neuropathology(Kyoto)* 1993;13:315-325
6. Nagai T, Yagishita A, Tsuchiya Y, Asamura S, Kurakawa H, Matsuo N. Symmetrical thalamic lesions on CT in influenza A virus infection presenting with or without Reye syndrome. *Brain Dev* 1993;15:67-73

J Korean Radiol Soc 2001;44:633 - 636

MR Imaging of Acute Necrotizing Encephalopathy: A Report of Two Cases¹

Young Joo Kim, M.D., Kyung Ah Chun, M.D., Ki Tae Kim, M.D.,
Kyu Ho Choi, M.D., Young Hoon Kim, M.D.²

¹Department of Radiology, College of Medicine, The Catholic University of Korea

²Department of Pediatrics, College of Medicine, The Catholic University of Korea

Acute necrotizing encephalopathy is the term used to describe acute encephalopathy with bilateral thalamotegmental involvement that occurs in infants and children after febrile viral illness. We report the MR findings of two cases of this condition.

Index words : Brain, MR
Children, central nervous system

Address reprint requests to : Young Joo Kim, M.D., Department of Radiology, The Catholic University of Korea.
65-1 Kumoh-Dong, Uijongbu-city, Kyunggi-do 480-130, Korea.
Tel. 82-31-820-3599 Fax. 82-31-846-3080 E-mail: violet2@cmc.cuk.ac.kr