

(anomalous unilateral single pulmonary vein)

,
.
,
.
,
1 .

(1) 1968 Kozuka 4
(tortous) (umbilico - vitelline venous system)
,
가 ,
.

Kozuka (1)
60 가 ,
가 ,
(Fig. 1A).

,
(Fig. 1B).
12:5, 2 17
12:5 .

(Fig. 1C, D).
(4, 5).
가 ,
Nakib (2) 4 , (1)
, (2) , (3)
, (4)

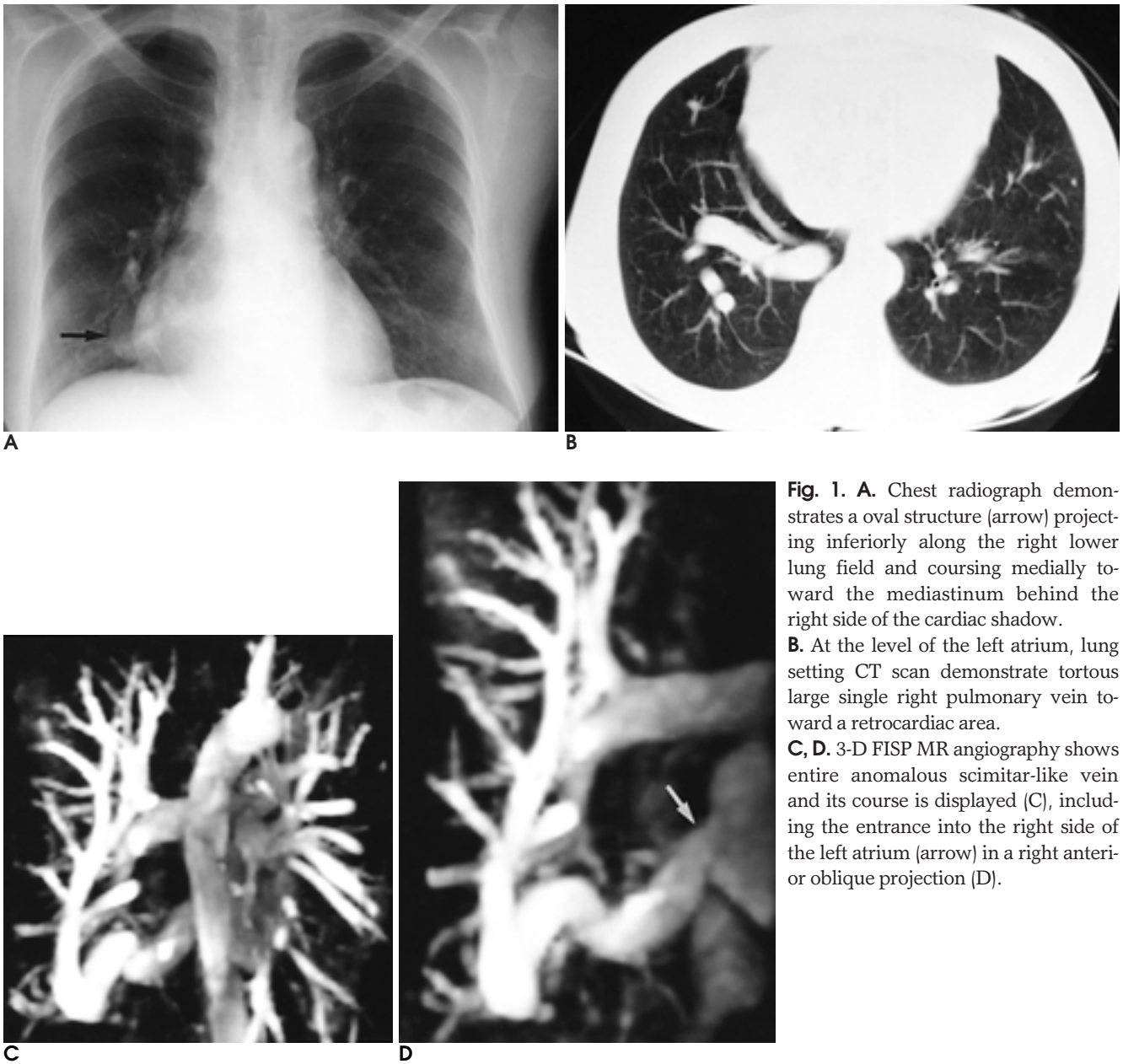


Fig. 1. **A.** Chest radiograph demonstrates a oval structure (arrow) projecting inferiorly along the right lower lung field and coursing medially toward the mediastinum behind the right side of the cardiac shadow. **B.** At the level of the left atrium, lung setting CT scan demonstrate tortuous large single right pulmonary vein toward a retrocardiac area. **C, D.** 3-D FISP MR angiography shows entire anomalous scimitar-like vein and its course is displayed (C), including the entrance into the right side of the left atrium (arrow) in a right anterior or oblique projection (D).

1. Kozuka T, Nosaki T. A pulmonary vein anomaly: unusual connection and tortuosity of the right lower lobe vein. *Br J Radiol* 1968;41: 232-234
2. Nakib A, Moller JH, Kanjuh VI, Edwards JE. Anomalies of the pulmonary veins. *Am J Cardiol* 1967;20:77-90
3. Rey C, Vaksman G, Francart C. Anomalous unilateral single pulmonary vein mimicking partial anomalous pulmonary venous return. *Cathet Cardiovasc Diagn* 1986;12:330-333
4. Trethway DG, Francis GS, McNeill DJ, Viewg WV. Single left pulmonary vein with normal pulmonary venous drainage: A roentgenographic curiosity. *Am J Cardiol* 1974;34: 237-239
5. Benfield JR, Gots RE, Mills D. Anomalous single left pulmonary vein mimicking a parenchymal nodule. *Chest* 1971;59:101-103
6. Ben-Menachem Y, Kuroda K, Kyger ER, Brest AN. The various terms of pulmonary varices. *AJR Am J Roentgenol* 1975;125:881-889

Anomalous Unilateral Single Pulmonary Vein: A Case Report¹

Jong-Uk Lim, M.D., Ki-Nam Lee, M.D., Sung-Kuk Yoon, M.D., Kyung-Jin Nam, M.D.

¹Department of Diagnostic Radiology, College of Medicine, Dong-A University

Anomalous unilateral single pulmonary vein is a rare abnormality of the pulmonary venous system characterized by a tortuous pulmonary venous confluence which never crosses the diaphragm and drains all arterial-ized blood from a lung to the left atrium, into which it normally flows. Cardiac and pulmonary anomalies are not associated. We report a case in which this condition was confirmed by the findings of chest radiography, computed tomography, and magnetic resonance angiography.

Index words : Pulmonary veins, abnormalities
Pulmonary veins, MR

Address reprint requests to : Ki-Nam Lee, M.D., Department of Diagnostic Radiology, Dong-A university College of Medicine,
1, 3-Ga, Dongdaesin-dong, Seo-gu, Pusan 602-103, Korea.
Tel. 82-240-5368 Fax. 82-51-253-4931