

1

2

1

가

(CAPD, continuous ambulatory peritoneal dialysis) 5.6 mg/dl, 9.8 mg/dl
(bacterial peritonitis), (aseptic 613 pg/ml(: 10 - 65
peritonitis), (sclerosing encapsulating 가 (Fig. 1A). CT
peritonitis), (progressive 가
calcifying peritonitis) (1 - 3). CAPD 가 (antimesenteric) 가
7) 가 (8). (2 - (Fig. 1B, 1C), (cocoon)
CAPD 5 . 5 CT 가 ,
1 (CT) CAPD . CT 8

62 CAPD ,
가 30 ,
, 16 ,
. 9 CAPD
. 7 ,
,
. 5 3 CAPD
CAPD , 2 CAPD
. CAPD 9
(acetate buffer) ,
- (calcium - phosphate product) 가
, ,
1
2
2000 2 29 2000 4 24
CAPD
9 , 4 7 가
7%
3
가

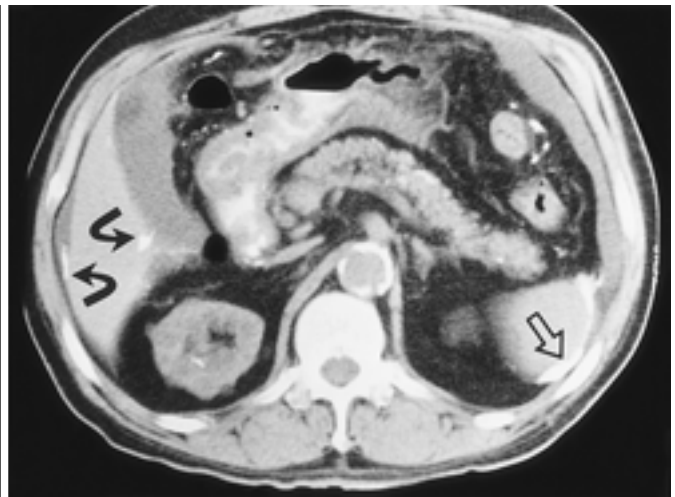


Fig. 1. A 62-year-old man with end-stage renal failure secondary to chronic pyelonephritis who has undergone continuous ambulatory peritoneal dialysis for 9 years.

A. Abdominal radiograph shows extensive eggshell-like calcification outlining small-bowel loops. A catheter for continuous ambulatory peritoneal dialysis is noted.

B. CT of the upper abdomen demonstrates curvilinear calcifications along the surface of the liver (curved arrows) and spleen (open arrow).

C. CT of the lower abdomen demonstrates numerous curvilinear calcifications on the small intestinal wall, chiefly on the antimesenteric border (curved arrows) and parietal peritoneum (arrowhead).

D 가가
(2-5). Klemm (10)
(ferric ions)

9 CAPD

가 CT
CAPD 가

가

1. Gandhi VC, Humayun HM, Ing JS, et al. Sclerotic thickening of the peritoneal membrane in maintenance peritoneal dialysis patients. *Arch Intern Med* 1980;140:1201-1203
2. Marichal JF, Faller B, Brignon P, Straub P. Progressive calcifying peritonitis: a new complication of CAPD? *Nephron* 1987;45:229-232
3. Miller FH, Delaney-Sathy L. Peritoneal calcification associated with continuous ambulatory peritoneal dialysis. *AJR Am J Roentgenol* 1996;166: 541-542
4. Fletcher S, Gibson J, Brownjohn M. Peritoneal calcification secondary to severe hyperparathyroidism. *Nephrol Dial Transplant* 1995;10:277-279
5. Cox SV, Lai J, Suranyi M, Walker N. Sclerosing peritonitis with gross peritoneal calcification: a case report. *Am J Kidney Dis* 1992; 20:637-642
6. Najem ES, Webel M, Ailani IM. Reversibility of peritoneal calci-

- fication in a dialysis patient maintained on hemodialysis and total parenteral nutrition. *AJR Am J Roentgenol* 1999;172:247-248
7. Stafford-Johnson DB, Wilson TE, Francis IR, Swartz R. CT appearance of sclerosing peritonitis in patients on chronic ambulatory peritoneal dialysis. *J Comput Assist Tomogr* 1998;22:295-299
8. , , , .

1999;40:95-98

9. Krestin GP, Kacl G, Hauser M, Keusch G, Burger HR, Hoffmann R. Imaging of sclerosing peritonitis and relation of radiologic signs to the extent of the disease. *Abdom Imaging* 1995;20:414-420
10. Klemm G. Peritoneal calcification and calciphylaxis. *Nephron* 1989;51:124

J Korean Radiol Soc 2000;43:69 - 71

Extensive Peritoneal Calcifications Associated with Continuous Ambulatory Peritoneal Dialysis¹

Hyo-Cheol Kim, M.D., Tae Kyoung Kim, M.D., Joon Koo Han, M.D., Ja Young Choi, M.D.,
Dong Kyung Lee, M.D., Yang Hee Park, M.D.², Byung Ihn Choi, M.D.

¹Department of Radiology, Seoul National University College of Medicine and the Institute of Radiation Medicine, SNUMRC

²Department of Radiology, National Police Hospital

Peritoneal calcification, which can lead to intestinal obstruction and potentially lethal hemoperitoneum, is a rare complication of continuous ambulatory peritoneal dialysis. We describe a case in which extensive peritoneal calcification had arisen for this reason. Although the patient was asymptomatic, extensive calcification was present on the parietal and visceral peritoneum, including the hepatic and splenic surface.

Index words : Peritoneum, CT
Peritoneum, calcification
Dialysis

Address reprint requests to : Joon Koo Han, M.D., Department of Radiology, Seoul National University Hospital,
28, Yongon-dong, Chongno-gu, Seoul 110-744, Korea.
Tel. 82-2-760-2584 Fax. 82-2-743-6385 E-mail: hanjk@radcom.snu.ac.kr

! ?

가

가

Korean Journal of Radiology (KJR)가 3

. KJR NLM Index Medicus Science Citation

Index (SCI)

Index Medicus, SCI

KJR 가

가 50,000,000

KJR 가

55 2000

6

	30,000	2000
Korean Journal of Radiology (KJR)	10,000	1/2 2001

!

2000

가

가

-

-

: (e-mail, , FAX)

: 025 - 25 - 0009 - 535

: 2000 5 31

E - mail : office@radiology.or.kr

: 121 - 8 () 137 - 130

: (82 - 2) 578 - 8003, : (82 - 2) 529 - 7113

Homepage : http://www.radiology.or.kr