

29

(1).

가 가

29

가

2

3-4

가

가

7 x

8cm

가

가

가

가

(Fig. 1A),
가
(Fig. 1B).

가

(1, 3).

가

(4, 5).

1-3.5cm

2가

6

(Fig. 1C, 1D).

6

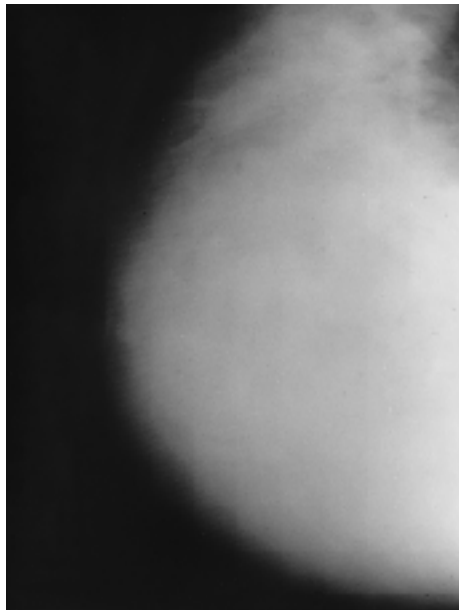
30-120 μm

(3).

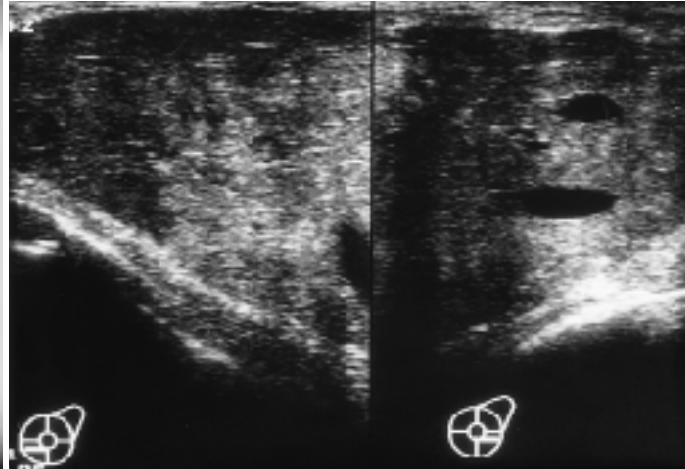
1

2

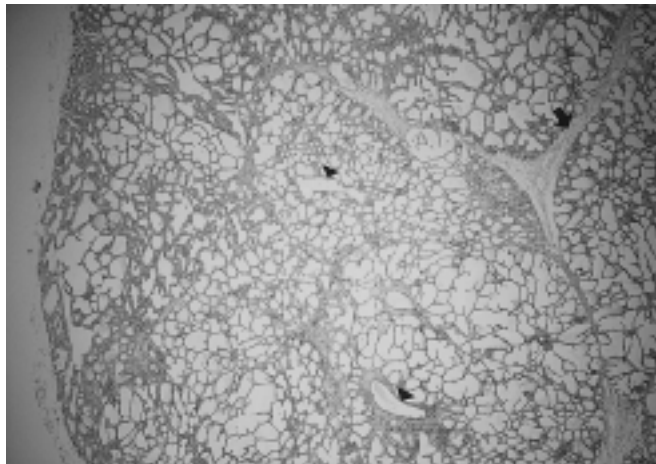
3



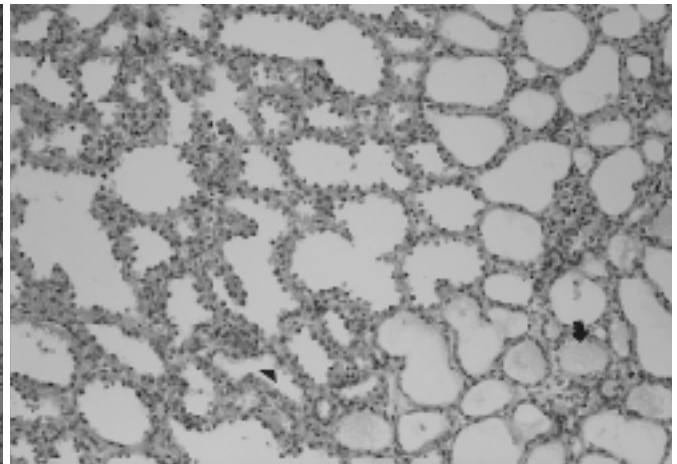
A



B



C



D

Fig. 1. Lactating adenoma of breast in a 29-year-old woman.

A. Craniocaudal view of mammogram shows a large relatively well-defined dense mass at the left breast.

B. Ultrasonogram shows a well-circumscribed and inhomogeneous echogenic mass with multiple sonolucent dilated ducts.

C. There is a network-type pattern of large alveolar spaces separated by delicate fibrovascular trabeculae (arrow). Dilatation of multiple ducts is noted (arrowhead) (H&E, × 20).

D. The alveolar spaces are filled with foamy materials (arrow) and lined by epithelial cells with prominent cytoplasmic vacuolation (arrowhead) (H&E, × 200).

(lactational change)

가 , Geschichter 가

(30-50 μm)

(6)

PAS

(1).

(7).

가

가

가

가 가

1. Hertel BF, Zalovdek C, Kempson RL. Breast adenoma. *Cancer* 1976;37:2891-2905
2. Slavin JL, Billson VR, Ostor AG. Nodular breast lesions during pregnancy and lactation. *Histopathology* 1993;22:481-485
3. O'Hara MF, Page DL. Adenomas of the breast and ectopic breast under lactational influences. *Hum Pathol* 1985;16:707-712
4. Grenko RT, Lee KP, Lee KR. Fine needle aspiration cytology of lactating adenoma of the breast. *Acta Cytol* 1990;34:21-26
5. Novotny DB, Maygarden SJ, Shermer RW, Frable WJ. Fine needle aspiration of benign and malignant breast masses associated with pregnancy. *Acta Cytol* 1991;35:676-686
6. Moran CS. Fibroadenoma of the breast during pregnancy and lactation. *Arch Surg* 1935;31:688-708
7. Sumkin JH, Perrone AM, Harris KM, Nath ME, Amortegui AJ, Weinstein BJ. Lactating adenoma: US features and literature review. *Radiology* 1998;206:271-274

J Korean Radiol Soc 2000;42:375- 377

Mammographic and Sonographic Findings of Lactating Adenoma: A Case Report¹

K.H. Baek, M.D., J.H. Yoon, M.D., S.N. Chu, M.D.,
H.Y. Oh, M.D., Y.D. Joh, M.D.², J.J. Jung, M.D.³

¹Department of Diagnostic Radiology, Namkwang Hospital, Seonam University

²Department of Diagnostic Radiology, Kosin College of medicine

³Department of Diagnostic Pathology, Namkwang Hospital, Seonam University

Lactating adenoma is rare tumor of the breast and is strongly associated with pregnancy or lactational influences. We report a case of growing lactating adenoma in a 29-year-old woman. Mammography revealed a large well-defined mass, while ultrasonography demonstrated a well-circumscribed and inhomogenous echogenic mass with multiple sonolucent dilated ducts.

Index words : Breast neoplasm, radiography
Breast neoplasm, US
Pregnancy

Address reprint requests to : K.H. Baek, M.D., Department of Diagnostic Radiology, Namkwang Hospital, Seonam University, College of Medicine #120-1, Maleuk-dong, Seo-gu, Kwang-Ju 507-157, Korea.
Tel. 82-62-370-7556 Fax. 82-62-371-3092

(2)

**23RD ANNUAL WINTER SKELETAL SYMPOSIUM:
MUSCULOSKELETAL MRI (2000 3 13-17)**

venue: Sun Valley, Idaho, USA.

contact: Janice Ford Benner, Hosp. of the Univ. of PA,
MRI Ctr., 3400 Spruce Street, 1 Founders Bldg.,
Philadelphia, PA 19104, USA.
(tel: 1-215-6626904; fax: 1-215-3495925)

**TRANSCRANIAL DOPPLER COURSE
(2000 3 16-17)**

venue: Winston-Salem, NC, USA.

contact: Wake Forest Univ. Sch. of Med., Center for Medical
Ultrasound, Medical Center Boulevard, Winston-
Salem, NC 27157-1039, USA.
(tel: 1-336-7164505; fax: 1-336-7164204
E-mail: cmu@wfubmc.edu)

**1ST ANNUAL VASCULAR IMAGING WORKSHOP:
VASCULAR IMAGING IN THE NEW MILLENNIUM
(2000 3 18-25)**

venue: Hotel Alpenrose, Zürs/Arlberg, Austria.

contact: Frau Sandner, Univ.-Klinik f.Radiagnostik,
AKH, A-1090 Vienna, Austria.
(tel: 43-1-404004893; fax: 43-1-404004894
E-mail: siegfried.thurnher@univie.ac.at)

**COURSE MRI UPDATE (BODY MR AND VASCULAR
TOPICS) (2000 3 20-24)**

venue: Vail, Colorado, USA.

contact: Janice Ford Benner, Univ. of PA Med. Center,
MRI Ctr., 3400 Spruce Street, 1 Founders Bldg.,
Philadelphia, PA 19104, USA.
(tel: 1-215-6626904; fax: 1-215-3495925)

**43RD ANNUAL DIAGNOSTIC RADIOLOGY
POSTGRADUATE COURSE (2000 3 20-24)**

venue: The Fairmont Hotel & Tower, San Francisco, CA,
USA.

contact: UCSF, Univ. of CA School of Medicine, 3333
California St., Suite 375, San Francisco,
CA 94143-0629, USA.
(tel: 1-415-4765731; fax: 1-415-4769213
E-mail: cme@radiology.ucsf.edu)

**SALMED-INTERNATIONAL TRADE FAIR OF MEDICAL
EQUIPMENT (2000 3 21-24)**

venue: Fairgrounds, Poznan, Poland.

contact: Ms. Agnieszka Malicka, Poznan International Fair
Ltd., Glogowska 14, 60-734 Poznan, Poland.
(tel: 48-61-8666312; fax: 48-61-8660643)

**10TH CONGRESS ASEAN ASSOCIATION OF
RADIOLOGY (AAR) (2000 3 22-25)**

venue: Bangkok, Thailand.

contact: Saroj Vanapruks, M.D., Royal Golden Jubilee Bldg.,

9th floor, 2 Soi Soonvijai, New Petchburi RD.,
Huay Kwang, Bangkok 10320, Thailand.
(tel: 66-2-7165963; fax: 66-2-7165964)

**ONCOLOGY 2000: FROM MOLECULES TO
MANAGEMENT (2000 3 23-24)**

venue: Royal Plaza Hotel, Kowloon, Hong Kong.

contact: Ms. Gigi Lui, Dept. of Clinical Oncology, Prince of
Wales Hospital, Shatin, N.T., Hong Kong SAR.
(tel: 852-26322119/26322144; fax: 852-26497426
E-mail: gigilui@cuhk.edu.hk)

**25TH ANNUAL MEETING SOC. OF CARDIOVASCULAR
AND INTERVENTIONAL RADIOLOGY**

(2000 3 25-30)

venue: San Diego Convention Ctr., San Diego, CA, USA.

contact: SCVIR, 10201 Lee Highway, Suite 500,
Fairfax, VA 22030, USA.
(tel: 1-703-6911805; fax: 1-703-6911855)

COURSE ORTHOPEDIC RADIOLOGY

(2000 3 27-29)

venue: Ritz Carlton, Boston, MA, USA.

contact: Danielle Pokorski, Dept. of Radiology,
75 Francis Street, Boston, MA 02115, USA.
(tel: 1-617-7326265; fax: 1-617-7326509)

**PERIPHERAL VASCULAR ULTRASOUND COURSE
(2000 3 27-30)**

venue: Winston-Salem, NC, USA.

contact: Wake Forest Univ. Sch. of Med., Center for Medical
Ultrasound, Medical Center Boulevard, Winston-
Salem, NC, USA.
(tel: 1-336-7164505; fax: 1-336-7164204
E-mail: cmu@wfubmc.edu)

COUNCIL ON DIAGNOSTIC IMAGING (2000 4)

venue: Marriott Hotel, Schaumburg, IL, USA.

contact: Dr. Lawrence Pyzik, P.O. Box 25, Palatine,
IL 60078-0025, USA.
(tel: 1-847-7051177; fax: 1-847-7051178)

**MEETING ON CARDIAC MRI AND MR ANGIOGRAPHY
(2000 4)**

venue: London, United Kingdom.

contact: Kitti Kottasz, BIR, 36 Portland Place,
London WIN 4AT, United Kingdom.
(tel: 44-171-3071429; fax: 44-171-3071414)

**MEETING ON TECHNOLOGICAL ADVANCES IN
ULTRASOUND (2000 4)**

venue: United Kingdom.

contact: Kitti kottasz, BIR, 36 portland Place,
London WIN 4AT, United Kingdom.
(tel: 44-171-3071429; fax: 44-171-3071414)