

MR : 1 1

.

가

가

1

MR

T2

(unconjugated bilirubin) (globus pallidus) (subthalamic nucleus), (hippocampus), (brain stem)

Coomb's test 13 (Mens, Germany)

ABO MR(1.0T, Magnetom Impact; Siemens, Germany) T2 (Fig. 1A), CT

(1 - 4).

(1, 5), MR

T2

가

(5 - 7).

2

가

, MR

가

MR

1

, MR T2

(Fig. 1B).

(bilirubin

6

3

(lethargy),

encephalopathy)

(1, 5).

, 2.4 kg

(choreoathetosis),

1

가

(1, 8).

(opisthotonos)

(3 -

19.2

5),

mg/dl

1

29.1 mg/dl

(phototherapy)

가 18 - 20 mg/dl

가

22

(exchange transfusion)

(8).

22

5.53 mg/dl

(vital sign)

가

(free bilirubin)

가

(neuron)

(1).

Rh(-) A

Rh(+) O

1

1999 7 22

2000 4 24

가

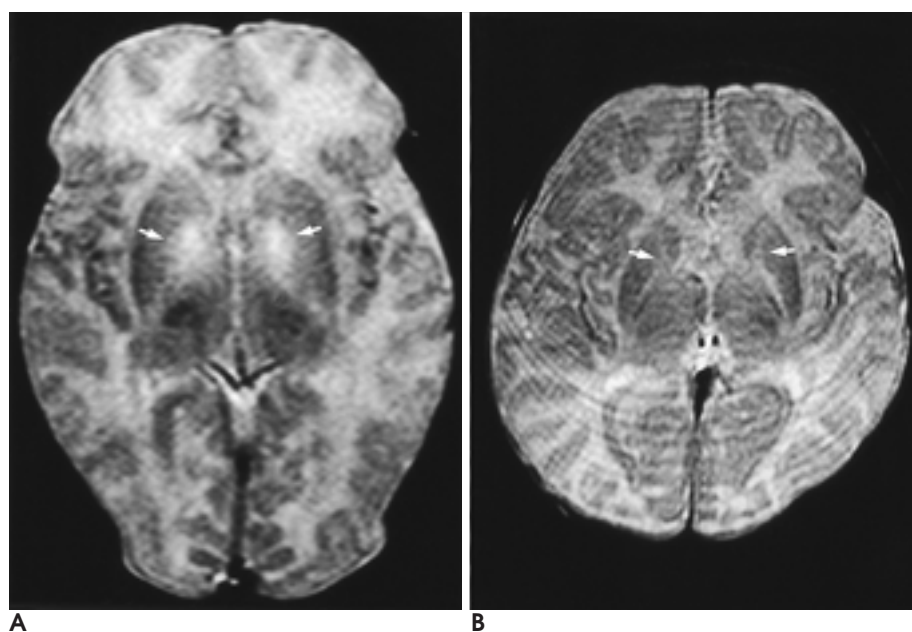


Fig. 1. A 13-day-old male infant.
A. Initial axial T2-weighted MR image shows symmetric high signal intensities in the globus pallidus (arrows).
B. Follow-up T2-weighted MR image 2 month later shows decreased high signal intensities in the globus pallidus (arrows).

(albumin binding bilirubin)
(1, 5, 8).

(neuronal processes)
(neurophagia)
(3, 5).

(cerebellar dentate nucleus),
olivary nucleus)
(5).

MR
T2
(5 - 7). T2
(myelinolysis),
(9), Martich - Kriss (5)

(microglial cell)
(1, 3, 4).

(inferior
(3, 5).

(spongiform)
(pyknosis)

Cashore (4)
가
5

Turkel (3)
, Turkel (3)
32

(cell components)
Na⁺ - K⁺
(neuronal body)
MR
T2

1. Hansen TWR, Bratlid D. Bilirubin and brain toxicity. *Acta Paediatr Scand* 1986;75:513-522
2. Hyman CB, Keaster J, Hanson V, et al. CNS abnormalities after neonatal hemolytic disease or hyperbilirubinemia. *Am J Dis Child* 1969;117:395-405
3. Turkel SB, Miller CA, Guttenberg ME, Moynes DR, Hodgman JE. A Clinical pathologic reappraisal of kernicterus. *Pediatrics* 1982;69:267-272
4. Cashore WJ. The neurotoxicity of bilirubin. *Clin Perinatol* 1990;17:437-447
5. Martich-Kriss V, Kollias SS, Ball WS. MR findings in kernicterus. *AJNR Am J Neuroradiol* 1995;16:819-821
6. Steinborn M, Seelos KC, Heuck A, Voss H, Reiser M. MR findings in a patient with kernicterus. *Eur Radiol* 1999;9:1913-1915
7. Yokochi K. Magnetic resonance imaging in children with kernicterus. *Acta Paediatr* 1995;84:937-939
8. Stoll BJ, Kliegman RM. *Digestive system disorders*. In Behrman RE, Kliegman RM, Jenson HB. *Nelson textbook of pediatrics*. 16th ed. Philadelphia : W.B Saunders company, 2000:513-519
9. Ho VB, Fitz CR, Chuang SH, Geyer CA. Bilateral basal ganglia lesions: pediatric differential considerations. *Radiographics* 1993;13:269-292

J Korean Radiol Soc 2000;42:995 - 997

MR Imaging of Kernicterus: A Case Report¹

Heung Cheol Kim, M.D., Kyeong Tae Eom, M.D., Yun Sik Yoo, M.D.
Im Kyung Hwang, M.D., Sook Namkung, M.D.

¹*Department of Diagnostic Radiology, College of Medicine, Hallym University*

Kernicterus is a neurologic syndrome, resulting from the preferential deposition of unconjugated bilirubin in the globus pallidus, subthalamus, hippocampus, and brain stem. The characteristic finding of kernicterus revealed by T2-weighted MR imaging is irreversible, bilaterally symmetrical high signal intensities in the globus pallidus. We report an atypical case of kernicterus, in which follow-up MR imaging of the globus pallidus demonstrated reversible signal intensity.

Index words : Infants, newborn
Brain, MR
Brain, metabolism

Address reprint requests to : Heung Cheol Kim, M.D., Department of Radiology, Chunchon Sacred Heart Hospital,
153, Kyo-Dong, Chunchon, Kangwon-Do, 200-060, Korea.
Tel. 82-33-252-9970 Fax. 82-33-256-6244

**12TH TRIENNIAL CONFERENCE INT. ORGANIZATION
FOR MEDICAL PHYSICS (2000 7 25-30)**

venue: Navy Pier, Chicago, IL, USA.
contact: Prof. Gary D. Fullerton, PhD, UT Health Sciences
Center, 7703 Floyd Curl Drive, San Antonio,
Tx 78284-7800, USA.
(tel: 1-210-5675550; fax: 1-210-5675549;
E-mail: fullerton@uthscsa.edu)

**SUMMER MUSCULOSKELETAL MRI CONFERENCE
(2000 7 31-8 4)**

venue: Banff Springs Resort, Canadian Rockies, USA.
contact: Janice Ford Benner, Hosp. of the Univ. of PA, MRI
Center, 3400 Spruce Street, 1 Founders Bldg.,
Philadelphia, PA 19104, USA.
(tel: 1-215-6626904; fax: 1-215-3495925)

**ANNUAL MEETING AMERICAN HEALTHCARE
RADIOLOGY ADMINISTRATORS (AHRA)
(2000 8 6-10)**

venue: Opryland, Nashville, TN, USA.
contact: Mary S. Reitter, AHRA,
P.O. Box 334, Sudbury, MA 01776, USA.
(tel: 1-978-4437591; fax: 1-978-4438046)

**BIANNUAL CONFERENCE OF THE SOCIETY OF
COMPUTED BODY TOMOGRAPHY AND MAGNETIC
RESONANCE (2000 8 13-17)**

venue: Chateau Whistler Resort, Whistler, BC, Canada.
contact: Barbara Mc Leod, Cmp, Matrix Meetings Inc.,
P.O. Box 1026, Rochester, MN 55903-1026, USA.
(tel: 1-507-2885620; fax: 1-507-2880014)

**19TH INTERNATIONAL CONFERENCE ON MAGNETIC
RESONANCE IN BIOLOGICAL SYSTEMS (ICMRBS)
(2000 8 20-25)**

venue: Centro Affari di Firenze, Florence, Italy.
contact: Prof. Ivano Bertini, Dept. of Chemistry,
Via Gino Capponi 7, I-50121 Florence, Italy.
(tel: 39-055-2757600; fax: 39-055-2757555;
E-mail: icmrbs@Irm.fi.cnr.it)

**30TH ANNUAL SCIENTIFIC MEETING AUSTRALASIAN
SOCIETY FOR ULTRASOUND IN MEDICINE
(2000 8 25-27)**

venue: Auckland, New Zealand.
contact: Ms Sue Butterworth, Ex. off. ASUM,
2/181 High Street, Willoughby NSW 2068, Australia.
(tel: 61-2-99587655; fax: 61-2-99588002;
E-mail: asum@asum.com.au)

**16TH INTERNATIONAL CONGRESS OF THE EUROPEAN
FEDERATION FOR MEDICAL INFORMATICS (EFMI)
(2000 8 28-9 1)**

venue: Hannover, Germany.
contact: Dr. R. Engelbrecht, GSF-Forschungszentrum,
MEDIS, Ingolstädter Landstrasse 1, D-85764
Neuherberg, Germany.
(tel: 49-89-31874138/-4139; fax: 49-89-31873008)

**HOSPIMEDICA ASIA- INTERNATIONAL HOSPITAL,
PHARMACEUTICAL, MEDICAL AND REHABILITATION
EQUIPMENT AND SUPPLIES EXHIBITION
(2000 8 29-9 1)**

venue: Singapore Suntec Centre, Singapore, Singapore.
contact: Messe Düsseldorf Asia Pte Ltd., #05-05 Suntec City
Tower, No. 5 Temasek Blvd., Singapore, Singapore.
No. 5 Temasek Blvd., Singapore 038985, Singapore.
(tel: 65-3329620; fax: 65-3374633/3329655
E-mail: mdafairs@singnet.com.sg)

**ERASMUS COURSE ON MAGNETIC RESONANCE
IMAGING (EMRI) : CENTRAL NERVOUS SYSTEM II IN
ANTWERP (2000 9 1-6)**

venue: University Hospital Antwerp, Edegem, Belgium.
contact: Prof. Dr. P.M. Parizel, Dept. of Radiology,
Wilrijkstraat 10, B-2650 Edegem, Belgium.
(tel: 32-3-8213732; fax: 32-3-8252026;
E-mail: parizelp@uia.ua.ac.be)

**ANNUAL CONGRESS EUROPEAN ASSOCIATION OF
NUCLEAR MEDICINE (2000 9 2-6)**

venue: Palais des Congrès(P. Maillot), Paris, France.
contact: EANM Paris 2000, Fac. de Méd. St-Antoine,
27, rue de Chaligny, F-75012 Paris, France.
(tel: 33-1-44688845; fax: 33-1-44688846;
E-mail: congress@eanm-paris2000.com)

**21ST INTERNATIONAL CONGRESS OF RADIOLOGY
(ICR 2000)/20TH INTERAMERICAN CONGRESS OF
RADIOLOGY /46TH ARGENTINE CONGRESS OF
RADIOLOGY (2000 9 4-8)**

venue: Sheraton Buenos Aires Hotel, Buenos Aires,
Argentina.
contact: Soc. Argentina de Radiologia, Mrs. G.V. Lallana de
Nápoli, Tucumán 2075, 1050 Buenos Aires,
Argentina.
(tel: 54-1-374-6487; fax: 54-1-374-6487/4651;
E-mail: info@icr2000.org.ar)

**PRACTICAL TRAINING IN INTERVENTIONAL
RADIOLOGY COURSE (2000 9 4-8)**

venue: Malmö University Hospital, Malmö, Sweden.
contact: Dr. Anders Lunderquist, M.D.
Svenska Vägen 48, 5-226 39 Lund, Sweden.
(tel: 46-46-2115656; fax: 46-46-2115656; E-mail:
lunderquist hands on course@ebox. tnet.net)

**CIRSE 2000 - ANNUAL MEETING AND POSTGRADUATE
COURSE OF THE CARDIOVASCULAR AND
INTERVENTIONAL RADIOLOGICAL SOCIETY OF
EUROPE (2000 9 10-14)**

venue: MECC, Maastricht, The Netherlands.
contact: CIRSE 2000, Bellerivestrasse 42, CH-8008 Zürich,
Switzerland.
(tel: 41-1-3849330; fax: 41-1-3849339;
E-mail: office@cirse.org)