

: 1 1

가  
S 14  
S 1  
가

(signet ring cell) 가 (1).  
(computed tomography, CT) S  
가 가

가 (2-4), 가 (Fig. 2).  
(hemicolectomy),  
(transverse colostomy) (adhesiolysis)  
S 9cm  
가 1mm S

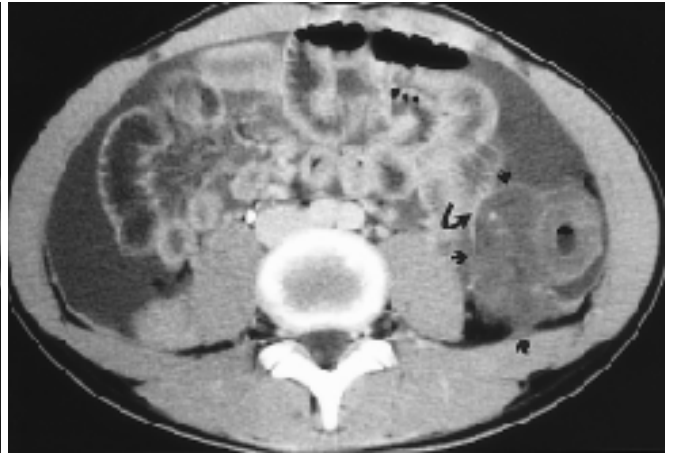
6  
2  
14 가 2  
2 Kg  
Carcinoembryonic antigen(CEA) alpha  
fetoprotein  
가 가  
S  
가  
가 (Fig. 1).



Fig. 1. Transverse sonogram of the left flank in prone position shows thickened wall of a portion of bowel (arrowheads) with ill-defined soft tissue mass to the medial and posterior side of it (open arrows). Note ascites (a) between the bowel loops.



A



B

Fig. 2. A. Precontrast CT scan shows massive ascites and a large soft tissue mass with small calcification in the descending colon (arrows).

B. Postcontrast CT scan reveal an ill-defined poorly enhancing mass (arrows) with tiny calcified foci. Note the indistinct borders of the medial and posterior aspects of the tumor and the adjacent small bowel loop (curved arrow), suggesting adhesion between them. Conglomeration of small bowel loops, dirty mesenteric fat, and ascites suggest carcinomatosa peritonei.

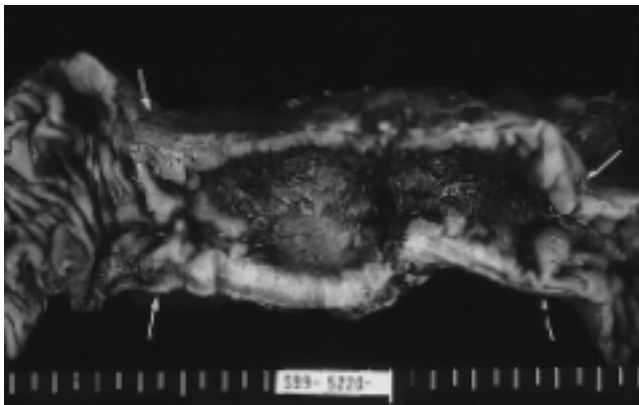


Fig. 3. The gross appearance of the surgical specimen reveals thickened and ulcerated colonic wall, resulting in luminal narrowing (arrows).

가 (5, 6).

, 가 , 가  
(7).

, 가 . 가 가 ,

가 (1). S 9cm

, , (anterior)

(Fig. 3).

(gland)

50% (extracellular)  
(1).

가

가 . (punctate)

(1, 6).

가

S

, 10 (5).  
(polyposis) 가 ,

가

(mucosal mass)가  
가  
CT

1. Buetow PC, Buck JL, Carr NJ, Pantongrag-Brown L. Colorectal adenocarcinoma: radiologic pathologic correlation. *RadioGraphics* 1995;15:127-146

2. Gupta SK, Caballes RL. Adenocarcinoma of colon in a child. *J Pediatr Gastroenterol Nutr* 1986;5:973-6
3. , , , , . 1  
1985;28:80-84
4. , , , , . 1  
1983;26:397-401
5. Silverman FN, Kuhn JP. *The colon*. In *Caffey's pediatric X-ray diagnosis*, 9th ed. St Louis: Mosby, 1993:1117-1118
6. Fuchs CS, Giovannucci EL, Cloditz GA, Hunter DJ, Speizer FE, Willett WC. A prospective study of family history and the risk of colorectal cancer. *N Eng J Med* 1994;331:1669-74
7. Wilson RE, Donohue JH. *Neoplasia of the colorectum*. In Philips SF, Pemberton JH, Shorter RG, eds. *The large intestine: physiology, pathophysiology, and disease*. New York, NY: Raven, 1991:521-547

J Korean Radiol Soc 2000;42:695-697

## Ruptured Mucinous Adenocarcinoma of the Colon in a Child : A Case Report<sup>1</sup>

Jong Chul Kim, M.D., Kyung Sook Shin, M.D.

<sup>1</sup>Department of Diagnostic Radiology, Chungnam National University School of Medicine

Carcinoma of the colon is extremely rare in pediatric patients, and due to the preponderance of poor histological characteristics and the difficulty of diagnosis, the prognosis in children is quite unfavorable. We describe a case of ruptured and disseminated mucinous adenocarcinoma of the descending and sigmoid colon in a 14-year-old boy with abdominal pain, diarrhea and fever. Ultrasonography and computed tomography revealed a large soft tissue mass containing tiny calcifications and poorly enhanced hypodense portions in the thickened descending and sigmoid colon, as well as abundant ascites. Where images reveal a mass with low attenuation, calcifications, and aggressive dissemination, mucinous adenocarcinoma may be preferentially included in the differential diagnosis of a pediatric colon tumor.

**Index words :** Children, gastrointestinal tract  
Colon, neoplasms  
Colon, CT

Address reprint requests to : Jong Chul Kim, M.D., Department of Diagnostic Radiology, Chungnam National University School of Medicine  
640, Daesa-dong, Jung-ku, Taejeon 301-040, Korea.  
Tel. 82-42-2220-7835 Fax. 82-42-2253-0061 E-mail: jckim@cnuh.co.kr

**3RD INTERVENTIONAL MRI SYMPOSIUM**

**(2000 5 12-13 )**

venue: Renaissance Hotel, Leipzig, Germany.  
contact: Dr. J.P. Schneider, Kl. & Polikl.f.Diagn.Radiologie,  
Univ. Leipzig, Liebigstrasse 20A, D-4103 leipzig,  
Germany.  
(tel: 49-341-9718100; fax: 49-341-9618135;  
E-mail: schneidj@medizin.uni-leipzig.de)

**RADIOLOGICAL ULTRASOUND COURSE**

**(2000 5 15-19 )**

venue: Winston-Salem, NC, USA.  
contact: Wake Forest Univ. Sch.. of Med., Center for  
Medical Ultrasound, Medical Center Boulevard,  
Winston-Salem, NC 27157-1039, USA.  
(tel: 1-336-7164505; fax: 1-336-7164204  
E-mail: cmu@wfubmc.edu)

**2000 MEETING OF THE AMERICAN COLLEGE OF  
MEDICAL PHYSICS (2000 5 15-20 )**

venue: Whistler, BC, Canada.  
contact: Am. coll. of Medical Physics, 1891 Preston White  
Drive, Reston, VA 22091, USA.  
(tel: 1-703-6488966)

**MID YEAR CONFERENCE AMERICAN OSTEOPATHIC  
COLLEGE OF RADIOLOGY (2000 5 18-21 )**

venue: Ritz Carlton, Dearborn, MI, USA.  
contact: Rhonda Boehner, 119 E 2nd Street, Milan, MO  
63556, USA.  
(tel: 1-816-2654011; fax: 1-816-2653494)

**ANNUAL MEETING SOCIETY OF THORACIC  
RADIOLOGY (2000 5 21-23 )**

venue: Inter Continental Willard, Washington, DC, USA.  
contact: Ryan Gibson, P.O. Box 1925, Roswell,  
GA 30077-1925, USA.  
(tel: 1-770-6419773)

**ERASMUS COURSE ON MAGNETIC RESONANCE  
IMAGING (EMRI): ABDOMINAL MRI IN PISA**

**(2000 5 21-24 )**

venue: Benedettine Congress Center, Pisa, Italy.  
contact: Prof. Dr. Bartolozzi, University of Pisa,  
Via Roma 67, I-56100 Pisa, Italy.  
(tel: 39-050-992509; fax: 39-050-551461  
E-mail: segreteria@do.med.unipi.it)

**37TH ANNUAL CONGRESS AND 23RD POSTGRADUATE  
COURSE OF THE EUROPEAN SOCIETY OF PAEDIATRIC  
RADIOLOGY (E.S.P.R) (2000 5 22-26 )**

venue: Hotel Altis, Lisbon, Portugal.  
contact: Congress Secretariat, Eurocongressos,  
Apartado 9880, p-1911 Lisboa Codex, portugal.  
(tel: 351-1-8472577; fax: 351-1-8473746  
E-mail: eurocongressos@mail.telepac.pt)

**7TH SPECIAL TOPIC SEMINAR: NEW DEVELOPMENTS  
IN CONTRAST AGENT RESEARCH (2000 5 25-26 )**

venue: Hotel corinthia Palace, San Anton, Malta, Greece.  
contact: Mr. Paolo Bianco, Travel Concept,  
Neue Grosse Bergstrasse 4-6,  
D-22767 Hamburg, Germany.  
(tel: 49-40-2794033; fax: 49-40-2799816  
E-mail: contact@travelconcept.de)

**30TH ANNUAL CONFERENCE OF THE FLEISCHNER  
SOCIETY (2000 5 26-28 )**

venue: Portopia Hotel, Kobe, Japan.  
contact: Pam Waslawski, Int. Meeting Managers, Inc.,  
4550 Post Oak Place, Suite 342, Houston,  
Texas 77027, USA.  
(tel: 1-713-9650566; fax: 1-713-9600488  
E-mail: imm@insync.net)

**ERASMUS COURSE ON MAGNETIC RESONANCE  
IMAGING (EMRI): CENTRAL NERVOUS SYSTEM I IN  
TOULOUSE (2000 5 27-31 )**

venue: University Paul Sabatier, Toulouse, France.  
contact: Prof. I. Berry, Dept. of Nuclear Medicine,  
Hôpital Rangueil, F-31403 Toulouse Cedex 4,  
France.  
(tel: 33-561322870; fax: 33-561322754  
E-mail: berry.i@chu-toulouse.fr)

**4TH ASIAN-PACIFIC CONGRESS OF CARDIOVASCULAR  
AND INTERVENTIONAL RADIOLOGY**

**(2000 5 28 -6 1 )**

venue: Singapore, Singapore.  
contact: Prof. Lenny Tan, M.D., Dept. of Diagn. Radiology,  
NUH, Lower Kent Ridge Road, Singapore 119074,  
Singapore.  
(tel: 65-7724210; fax: 65-7730190)

**IMAGING TOGETHER 2000: THE 54TH NORDIC  
RADIOLOGICAL CONGRESS/THE 14TH NORDIC  
CONGRESS FOR RADIOGRAPHERS**

**(2000 5 28-31 )**

venue: Marina Congress Center, Helsinki, Finland.  
contact: Congress Team, Area Travel Agency Ltd.,  
P.O. Box 6 (Päivärinnankatu 1), FIN-00251  
Helsinki, Finland.  
(tel: 358-9-818383; fax: 358-9-4775811  
E-mail: cteam@area.fi)

**CONFERENCE ON BREAST CANCER (2000 6 )**

venue: New York, NY, USA.  
contact: ESO USA, R. Boschi-Belgin,  
872 madison Avenue-2B, New York,  
NY 10021, USA.  
(tel: 1-212-6289090; fax: 1-212-5176089  
E-mail: aicfnyc@aol.com)