



가 .

56 ,

4 1

0.2-0.5 % (1-4) 가 ,

(1, 가

3, 5-7). (3, 5, 6, 8, 9), (Fig.

1C).

(1), 가

가 (4). 가 (Fig. 1D).

X- CT 가 (1, 4, 9).

가 ,

가 .

vimentin

desmin

. Cytokeratin EMA(epithelial membrane antigen) actin

가 ,

4

2

CT (Fig. 1E) 10x7x8 cm

56 10

40 (pack-year) X-

가 , cytokeratin, EMA

3×3×1 cm 가 CT

가 26 HU

가 (Fig. 1A).

(Fig. 1B).

가 .

(blastoma), (carcinosarcoma)

(sarcomatoid carcinoma) (2, 6, 7).

1  
2  
3  
4

2000 1 3 2000 2 28

(6, 7).

(4, 5, 9).

가

(3,

6, 8, 9).

가

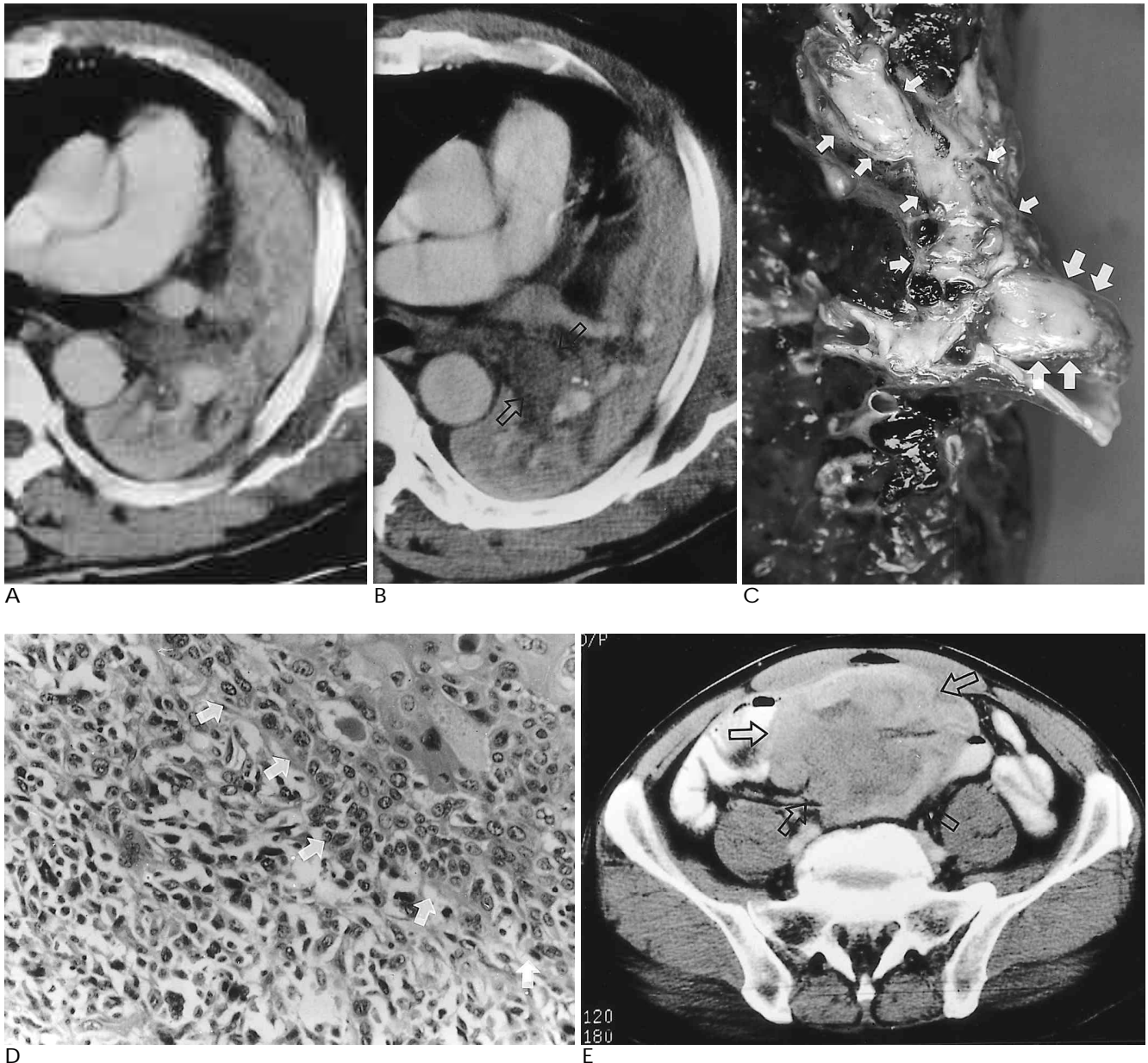


Fig. 1. 56-year-old man with endobronchial sarcomatoid carcinoma

A, B. Chest CT scan at the level of carina demonstrates relatively low density mass within the left main bronchus(black arrow) extending to the left lower lobar bronchus(empty arrow). Left lung is totally collapsed due to endobronchial mass.

C. Gross examination of the surgical specimen reveals a large polypoid mass as an endobronchial mass arising from the bronchus of the lower lobe just distal to bifurcation(white arrows) and polypoid branching pattern into bronchus of the upper lobe and main bronchus(small white arrows).

D. Photomicrography of specimen ( $\times 200$ )

There are squamous cell carcinomatous component at the left upper corner(white arrows) and the other area is composed of markedly pleomorphic and anaplastic spindle cells with occasional multinucleation.

E. After 4 months, abdominal CT scan shows about  $10 \times 7 \times 8$ cm sized heterogeneous enhancing mass(empty arrows) in mesentery of the lower abdomen. Open biopsy revealed sarcomatous component only in the mass.

가 (9)

가 (carcnoia with a sarcomatoid element) 가 (pulmonary carcinoma with sarcoma like lesion) (2), 1999

가 (carcinoma with pleomorphic sarcomatoid or sarcomatous components) 가

가 (2)

37 Nakajima (10) (carcinomatous element)

가

가 가 (sarcomatoid element) (spindle cell type), (giant cell type) (mixed spindle and giant cell type) (10).

(1, 3, 4, 7-9) (3, 5-7).

2/3가, 1/3 가

(1), 가 (pedicle)

(2). 가 가

(1, 3, 4, 7-9), 41 24

(58.5%)가, 13 (31.7%)가

, 4 (9.8%)가

가 (1).

가 가

(7).

9 (5). 가 가

- (5).
- Nakaji-ma (10) 가 (10).
- (4)
- CT
1. Davis MP, Eagan RT, Weiland LH, Pairolero PC. Carcinosarcoma of the lung: Mayo Clinic experience and response to chemotherapy. *Mayo Clin Proc* 1984;59:598-603
  2. Olenick SJ, Fan CC, Ryoo JW. Mixed pulmonary blastoma and carcinosarcoma. *Histopathology* 1994;25:171-174
  3. Farrell DJ, Cooper PN, Malcolm AJ. Carcinosarcoma of lung associated with asbestosis. *Histopathology* 1995;27:484-486
  4. Kim KI, Flint JD, Müller NL. Pulmonary carcinosarcoma: radiologic and pathologic finding in three patients. *AJR* 1997;169:691-694
  5. Colby TV, Koss MN, Travis WD. Tumors of the lower respiratory tract. In Colby TV, Koss MN, Travis WD. *Atlas of tumor pathology*. 3rd ed. Washington, DC : Armed Forces Institute of Pathology, 1994: 411-416
  6. Ro JY, Chen JL, Lee JS, Sahin AA, Ordonez NG, Ayala AG. Sarcomatoid carcinoma of the lung: immunohistochemical and ultrastructural studies of 14 cases. *Cancer* 1992;69:376-386
  7. Rainosek DE, Ro JY, Ordonez NG, Kulaga AD, Ayala AG. Sarcomatoid carcinoma of the lung: a case with atypical carcinoid and rhabdomyosarcomatous components. *Am J Clin Pathol* 1994; 102:360-364
  8. Humphrey PA, Scroggs MW, Roggli VL, Shelburne JD. Pulmonary carcinomas with a sarcomatoid element: an immunocytochemical and ultrastructural analysis. *Hum Pathol* 1988;19:155-165
  9. Ishida T, Tateishi M, Kaneko S, et al. Carcinosarcoma and spindle cell carcinoma of the lung: clinicopathologic and immunohistochemical studies. *J Thorac Cardiovasc Surg* 1990;100:844-852
  10. Nakajima M, Kasai T, Hashimoto H, Iwata Y, Manabe H. Sarcomatous carcinoma of the lung: a clinicopathologic study of 37 cases. *Cancer* 1999 Aug 15;86(4):608-616

## **Endobronchial Sarcomatoid Carcinoma of the Lung : A Case Report<sup>1</sup>**

Hye Jeon Jung, M.D., Eun Joo Ko, M.D., Sang Moo Lee, M.D.<sup>2</sup>, Man Sil Pack, M.D.<sup>3</sup>,  
Jong Eun Joo, M.D.<sup>4</sup>, Yong Kyu Yoon, M.D.

<sup>1</sup>Department of Radiology, Eulji College of Medicine Eulji hospital

<sup>2</sup>Department of Internal Medicine, Eulji College of Medicine Eulji hospital

<sup>3</sup>Department of Chest Surgery, Eulji College of Medicine Eulji hospital

<sup>4</sup>Department of Diagnostic Pathology, Eulji College of Medicine Eulji hospital

Sarcomatoid carcinomas of the lung are rare malignant biphasic tumors composed of carcinomatous and sarcomatous components. We report a case of endobronchial sarcomatoid carcinoma in a 56-year-old man with a history of smoking, in whom the tumor was an endobronchial mass arising from the superior segmental bronchus of the left lower lobe and protruding against the main bronchus without parenchymal invasion. The patient underwent left pneumonectomy but four months later died of mesenteric sarcomatous metastasis.

**Index words :** Lung neoplasms  
Bronchi, neoplasms

Address reprint requests to : Hye Jeon Jung, M.D., Department of Radiology, Nowon Eulji Hospital,  
280-1, Hagye 1 Dong, Nowon Gu, Seoul 139-231, Korea.  
Tel. 82-2-970-8290 Fax. 82-2-970-8346 E-mail : ejhyyk@eulji.or.kr