

10  
4 , CT  
가 CT  
(hypotympanum)  
가 , 가  
(bony labyrinth) (promontary)  
2  
(1).  
(Fig. 2A, B).  
3  
67 가 8  
가 (2-7) 2 40  
가  
4 CT  
가 CT  
(Fig. 3).  
가  
1  
54 가  
CT  
가 (Fig. 1).  
가  
2  
59 가 1 6  
CT  
가  
(3,  
4).  
가  
가 (5),  
(6),  
가  
가  
1999 8 31 2000 3 13  
597

(s-

(6).

mooth shell)

(7).

(squamous metaplasia)

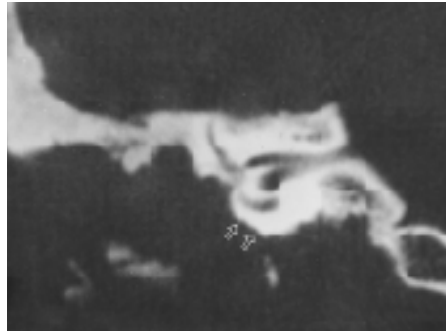
(8),

Moise (5)  
CT

4



A

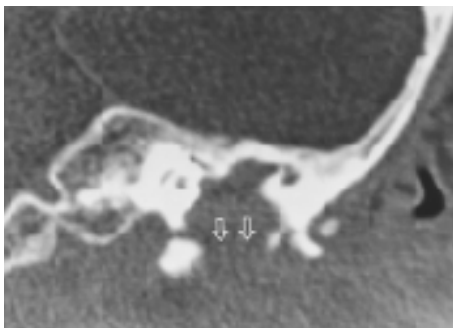


B

Fig. 1. Squamous cell carcinoma associated with fibrous dysplasia in a 54-year-old man.

A. Coronal image shows soft tissue density affecting whole tympanic cavity and EAC, but primary site of involvement appears hypotympanum. There are irregular shape of destruction affecting inferior canal wall and hypotympanum (arrows). Also note the preservation of scutum.

B. Coronal image shows spiculated or spike-like destruction of the promontary (arrows).



A

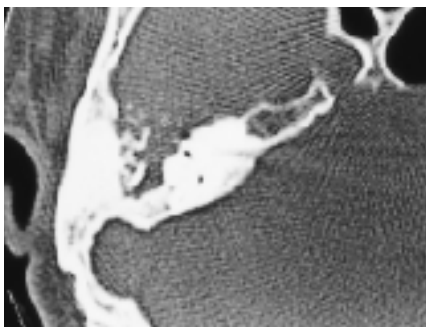


B

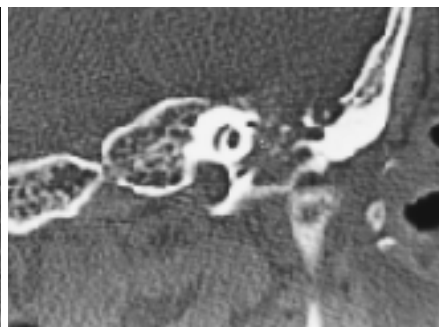
Fig. 2. Squamous cell carcinoma in a 59 year-old man.

A. Coronal image shows hypotympanic mass (arrows) and marked destruction of inferior canal wall.

B. Axial image shows irregular destruction of anterior canal wall and hypotympanum.



A



B



C

Fig. 3. Squamous cell carcinoma in a 67 year-old woman.

A. Axial image shows irregular destruction of the anterior epitympanic recess (arrows).

B. Coronal image shows irregular destruction of the bony labyrinth (arrow), the inferior wall of hypotympanum, facial canal, and tegmen tympani.

C. Coronal image shows spiked appearance of the promontary (arrows) and fan-shaped, wide opening of the tegmen (arrows).

(50%) (Fig. 1-3). (Fig. 3B) 2 4

가 , Lawrence (8)

가 3 (75%) promontary (Fig. 1, 3),

promontary

(6), 3 promontary

CT (hypotympanum)

가 promontary 가

1. Kerry DO, Lawrence WD, Glenn SF. Radiographic assessment of squamous cell carcinoma of the temporal bone. *Laryngoscope* 1983; 93:1162-1167
2. 1981;24 (1):54-58
3. Horowitz SW, Leonetti JP, Kia BA, Fine M, Izquierdo R. CT and MR of Temporal Bone Malignancies primary and secondary to parotid carcinoma. *AJNR* 1994;15:755-762
4. Goodwin WJ, Jesse RH. Malignant neoplasm of the external auditory canal and temporal bone. *Arch Otolaryngol* 1980;106:675-679
5. Arriaga M, Curtin H, Takahashi H, Barry EH, Kamerer DB. Staging proposal for external auditory meatus carcinoma based on preoperative clinical examination and computed tomography findings. *Ann Otol Rhinol Laryngol* 1990;99:714-721
6. Som P, *Head and Neck Imaging*. 3rd edition, Mosby 1996:1398-1405, 1515-1517
7. Valvassori GE, Mafee MF, Carter BL. Image of the head and neck. *Thieme* 1995:84-103
8. Meiteles LZ, Conley JJ. Squamous cell carcinoma of the temporal bone arising 43 years after fenestration procedure. *Am J Otol* 1991; 14 (5):512-514

J Korean Radiol Soc 2000;42:597-599

## Squamous Cell Carcinoma of Temporal Bone: Four Case Reports<sup>1</sup>

Jun Ha Lee, M.D., Ki Joon Sung, M.D., Young Sim Chang, M.D.,  
Sue Yoen Shim, M.D., Byoung Moon Yoon, M.D.<sup>2</sup>

<sup>1</sup>Department of Diagnostic Radiology, Yonsei University, Wonju College of Medicine

<sup>2</sup>Department of Otolaryngorhinology, Yonsei University, Wonju College of Medicine

We report the CT findings of four cases of squamous cell carcinoma, paying special attention to the epicenter of the lesion and the pattern of bony destruction. All four patients had a past history of chronic otitis media. Squamous cell carcinoma affected mainly the hypotympanum and inferior wall of the external auditory canal, and in all cases revealed an irregular pattern of bony destruction. Irregular destruction of the tegmen tympani occurred in two cases. In cases of squamous cell carcinoma, CT findings suggesting involvement of the promontary are usually noted.

**Index words :** Temporal bone, neoplasms  
Temporal bone, CT

Address reprint requests to : Ki Joon Sung, M.D., Department of Diagnostic Radiology, Yonsei University Wonju College of Medicine, Wonju Christian Hospital. 162, Ilsandong, Wonju 220-701, Korea.  
Tel. 82-371-741-1474 Fax. 82-371-732-8281

2000

가

.

- -

가. : 2000 5 27 ( ) 14:00 16:30

. : . ( . )

- 6

- 2 ,

- 2 A

-

. - 6 7

. - 1

. - 9

. : 10,000

( : , 025-25-0008-112, )

. : 2000 5 6 ( )

. : , , , ( ),

( )137-130, 121-8

Fax. (02) 529-7113, E-mail : office@radiology.or.kr