

CT : 1 1

1

CT 가

(Fig. 1B).

(1).

1500cc

3

(2).

가

가

(2, 3)

가

3cm

0.8cm

0-0-0-0 27

38

8-16%

6

(4).

가

4-5 가

92% 가

50/30mmHg,

96

6.6-10%

10cc

25-40%

(multigravida)

3

3

71%,

가

95%

(5).

가

(mean 61 H.U.)

가

(lesser sac)

(left anterior pararenal space)

(paracolic

(intimal hyperplasia)

gutter)

(Douglas pouch)

가

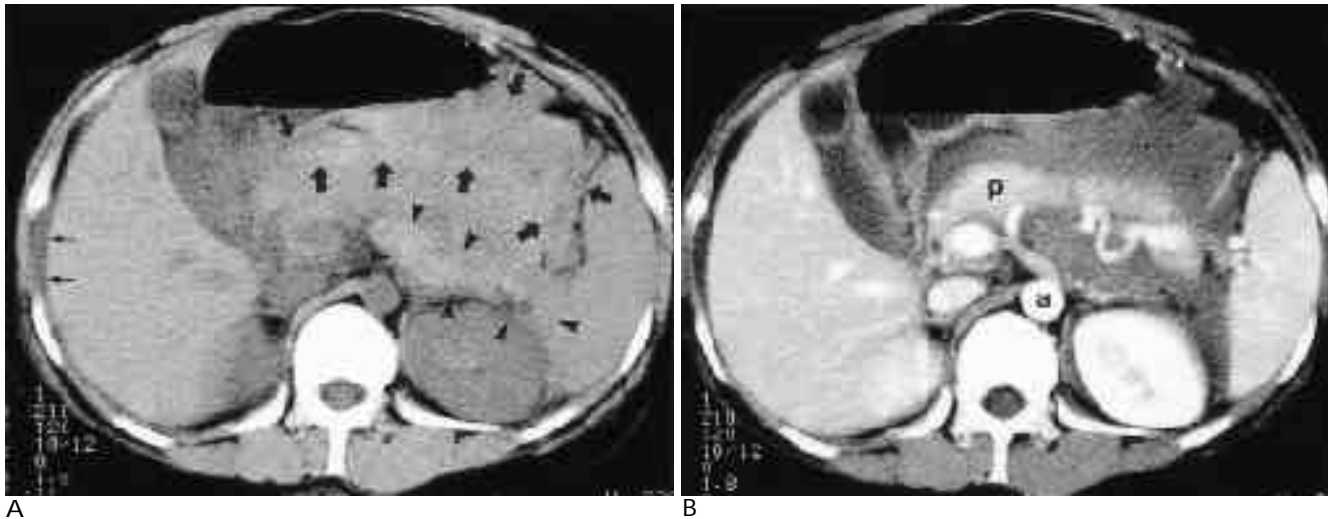
(Fig. 1A).

가

(5, 6).

1999 11 19

2000 1 7



A

B

Fig. 1. 27-year-old woman with spontaneous rupture of splenic artery aneurysm after Cesarean section.

A. On pre-contrast abdominal CT scan, high density masses(54-66H.U.) seen primarily in the lesser sac(arrows) and retroperitoneum(arrow heads) represent clotted blood. Fluid seen in the right subphrenic space(small arrows) represent hemoperitoneum.

B. On post-contrast CT scan of the same level, aorta(a) and pancreas(p) show normal appearance. Note round enhancing sac at the posterior aspect of pancreatic tail(arrow).

CT

(sentinel clot)

(1, 4). 가

Trastek
0.6 3.0cm(2.1 cm) 20%

1/3, (4). 가

가 . 25% 가

가 가 48 가 “ 2
(Winslow’s foramen) 가

가 (1). Meyer 가 -

(7). Brunet

(celiac arteriography)
1cm 가 (8).

1. Mines D. Splenic artery aneurysm rupture. *Am J Emerg Med* 1999; 9:74-76
2. Macfarlane JR, Thorbjarnarson B. Rupture of splenic aneurysm during pregnancy. *Am J Obstet Gynecol* 1966;95:1023-1030
3. Schug J, Rankin RP. Rupture of splenic artery aneurysm in pregnancy: report of a survivor and review of the literature. *Obstet Gynecol* 1965;25:717-723
4. Trastek VF, Pairolero PC, Bernatz PE. Splenic aneurysms. *World J Surg* 1985;9:378-383
5. Trastek VF, Pairolero PC, Joyce JW, et al. Splenic artery aneurysms. *Surgery* 1982;91:694-699
6. Mcneely RG, Anderle LJ, Conklin CR. Splenic artery aneurysm rupture in pregnancy with maternal and fetal survival. *J Reprod Med* 1992;37:939-942
7. Meyer MA. Roentgen significance of the phrenicocolic ligament. *Radiology* 1970;95:539-545
8. Brunet WG, Greenberg HM. CT demonstration of a ruptured splenic artery aneurysm. *J Comput Assist Tomogr* 1991;15:177-178

CT Finding of Ruptured Splenic Artery Aneurysm after Cesarean Section : A Case Report¹

Chang Woo Ryu, M.D., Hee Jin Kim, M.D.

¹Department of Diagnostic Radiology, Pundang CHA General Hospital Pochon CHA Medical College

Spontaneous rupture of a splenic artery aneurysm during puerperium is rare and is due to the non-specific clinical appearance, diagnosis is difficult. We describe a case of spontaneous rupture of splenic artery aneurysm after a Cesarean section. CT showed high-density ascites localized in the lesser sac and left retroperitoneum.

Index words : Aneurysm, splenic
Arteries, splenic
Peritoneum, CT
Peritoneum, hemorrhage

Address reprint requests to : Hee Jin Kim, M.D., Department of Diagnostic Radiology, Pundang CHA hospital
#351 Yatap-dong, Pundang-gu, Sungnam, Kyunggi-do 463-070, Korea.
Tel. 82-0342-780-5385 Fax. 82-0342-780-5381

1)

4.0

4.0

2)

“ ”

“ (Location) Netsite ”

<http://www.radiology.or.kr>

