



(mucocoele-like tumor)
(mucinous carcinoma)

41

1

(mucocoele-like tumor of the breast)
(mucocoele)

1986 Rosen

(1).
가

(Fig. 2A).

41

(Fig. 2B).

1

41

가

2

가

Rosen

(mucocoele-like tumor) 1986

가

가

가

가

12

가

(1). Bhargava (2)

(Fig.1A).

1.4cm x 0.9cm x 1.4cm

12

가

가

(Fig.1B).

(Fig.1C).

. Hamele-Bena (3)

가

가

가

가

(2,3). Ro (4) 7

1

2

3

1998 11 4

1999 6 15

가

, Kukla (5) 2

:
 . Weaver (6) 23 67
 40 , Rosen(1)
 40
 가
 41
 .
 . Fisher (7) 가 . Kirk (9)
 1 가 가
 가 (4). Hamele-Bena (3)
 가 (10). Rosen(10), Hamele-Bena (3)
 Cardenosa (8)

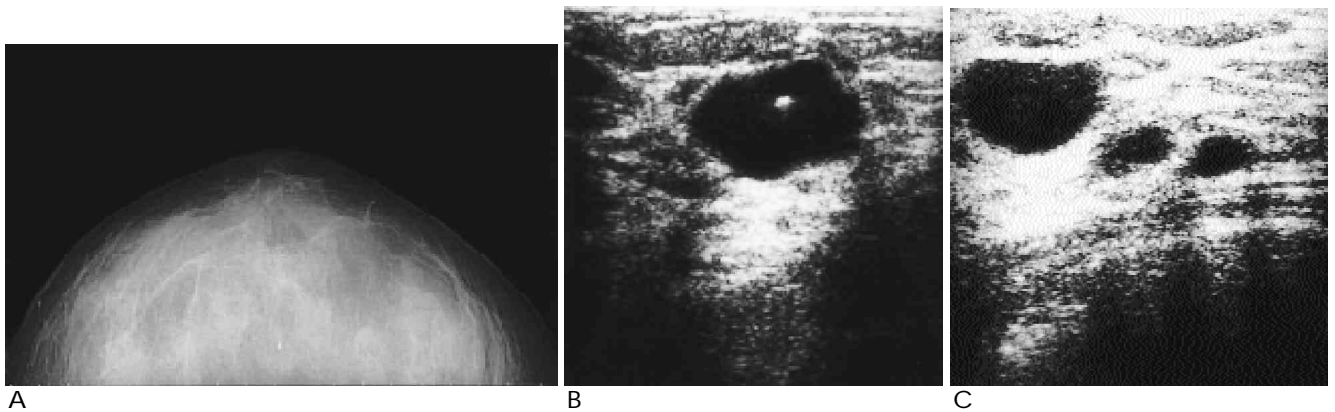


Fig. 1. 41-year-old woman with palpable right breast mass during 2 months.
 A. Craniocaudal mammogram of the right breast shows dense parenchymal pattern without definite mass density. A calcification is noted in the center of mass.
 B. Ultrasonogram of the right breast shows a relatively well-circumscribed, slightly lobulated, cystic mass with internal septation and a microcalcification.
 C. Other multiple small cysts are associated around the main lesion.

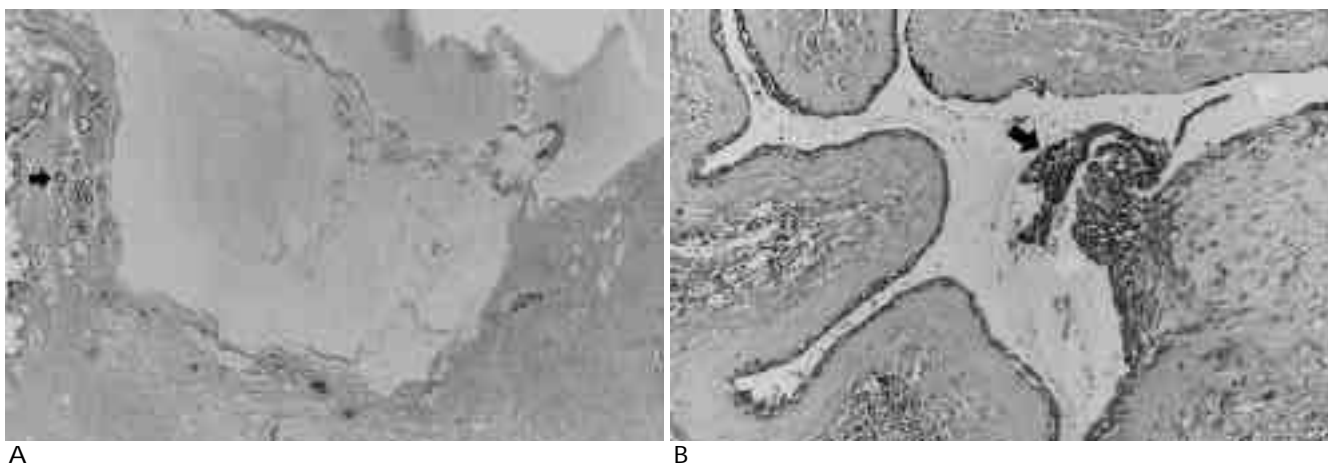


Fig. 2. Pathologic findings of the same lesion with Fig. 1
 A. Microscopic findings reveal a cystic space containing abundant mucinous secretion. Arrow indicates focal fibrocystic changes (H&E, $\times 20$).
 B. Another focus of the same lesion shows a cystic space containing mucin, partially lined by benign breast epithelium and a focus of ductal epithelial hyperplasia (arrow) (H&E, $\times 100$).

2 , Kirk (9)
Cardenosa (8)
10 가 .
Kirk
(adenosis) 가 가
(lobular carcinoma in situ)
Rosen (1)
가
가

1. Rosen PP. Mucocoele-like tumors of the breast. *Am J Surg Pathol* 1986;10:464-469
2. Bhargava V, Miller TR, Cohen MB. Mucocoele-like tumors of the breast. Cytologic findings in two cases. *Am J Clin Pathol* 1991;95: 875-877
3. Hamele-Bena D, Cranor ML, Rosen PP. Mammary mucocoele-like lesions(MLL); benign and malignant. *Am J Surg Pathol*(in press)
4. Ro JY, Sneige N, Sahin AA, Silva EG, delJunco GW, Ayala AG. Mucocoele-like tumor of the breast associated with atypical ductal hyperplasia or mucinous carcinoma. A clinicopathologic study of seven cases. *Arch Pathol Lab Med* 1991;115:137-140
5. Kulka J, Davies JD. Mucocoele-like tumors: more associations and possibly ductal carcinoma in situ? *Histopathology* 1993;22:511-512
6. Weaver MG, Abdul-Karim FW, Al-Kaisi N. Mucinous lesions of the breast. A pathologic continuum. *Pathol Res Proc* 1993;189:873-876
7. Fisher CJ, Millis RR. A mucocoele-like tumor of the breast associated with both atypical ductal hyperplasia and mucoid carcinoma. *Histopathology* 1992;21:69-71
8. Cardenosa G, Doudna C, Eklund GW. Mucinous(colloid) breast cancer: correlation with pathologic features. *AJR* 1994;162:1077-1079
9. Kirk IR, Schultz DS, Katz RL, Libshitz HI. Mucocoele of the Breast. *AJR* 1991;156:199-200
10. Rosen P. *Breast pathology*. JB Lippincott Co. Philadelphia, 1997, pp.412-420

Mucocoele-like Tumor of the Breast : A Case Report¹

Ho Sung Kim, M.D., Jeong Mi Park, M.D., Eun-Kyung Ji, M.D., Gyungyub Gong, M.D.²,
Sei-Hyun Ahn, M.D.³

¹Department of Diagnostic Radiology, University of Ulsan College of Medicine, Asan Medical Center, Seoul, Korea

²Department of Pathology, University of Ulsan College of Medicine Asan Medical Center, Seoul, Korea

³Departments of General Surgery, University of Ulsan College of Medicine Asan Medical Center, Seoul, Korea

Mucocoele-like tumor(MLT) is a rare benign neoplasm occurring in the breast. Differentiation of MLT from mucinous carcinoma of the breast on the basis of fine-needle aspiration biopsy specimens is difficult, and in Korea, the radiologic findings of these lesions have not been reported. We describe a case of MLT of the breast, and review of the literature .

Index words : Breast neoplasms, diagnosis
Breast neoplasms, US

Address reprint requests to : Jeong Mi Park, M.D., Department of Diagnostic Radiology, Asan Medical Center, University of Ulsan College of Medicine #388-1 Poongnap-dong, Songpa-ku, Seoul, 138-736, Korea.
Tel. 82-2-2224-4400 Fax. 82-2-476-4719 E-mail. jmpark@www.amc.seoul.kr