

# 노내장의 약물치료

---

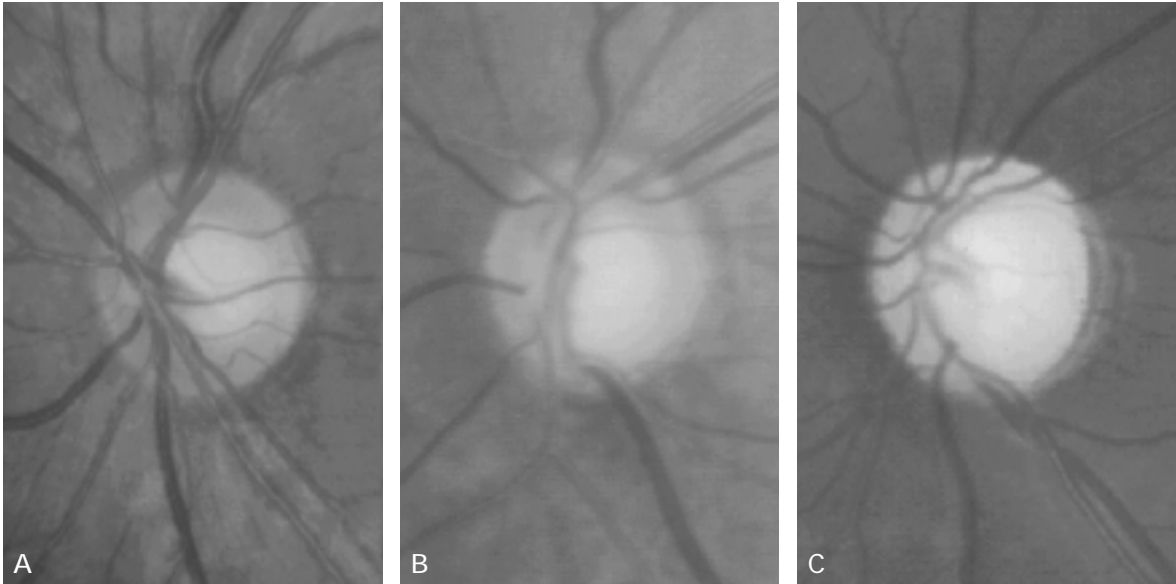
E - mail : kihopark@snu.ac.kr

Most types of glaucoma do not present their symptoms until the advanced stage. Thus early detection is critical for the best outcome of treatment in glaucoma and is possible by routine ocular examinations or routine health check - up. Once glaucoma is suspected, diagnostic work - up should be performed including evaluation of the optic nerve head and retinal nerve fiber layer and visual field examinations. Treatment of glaucoma is focused to lower the intraocular pressure(IOP) that serves as the most important risk factor for glaucoma. Setting a target pressure before initiation of IOP - lowering therapy is important. Medication should be selected in consideration of the efficacy, mode of action, and side effects of agents along with patient compliance. In addition to IOP - lowering therapy, possible systemic vascular problems should be evaluated and managed. The treatment outcome should be followed by measurement of IOP, evaluation of optic nerve head and RNFL, and visual field examinations.

•                   •                   •                   •                   •

•                   ;                   ;                   ;                   ;

$$).$$



1. (A)

0.5,

0.4

(B)

(C)

가 가

2                      가

가

가 3

가

가

. 2001

2,323

가

13%

가

(3).

, 가

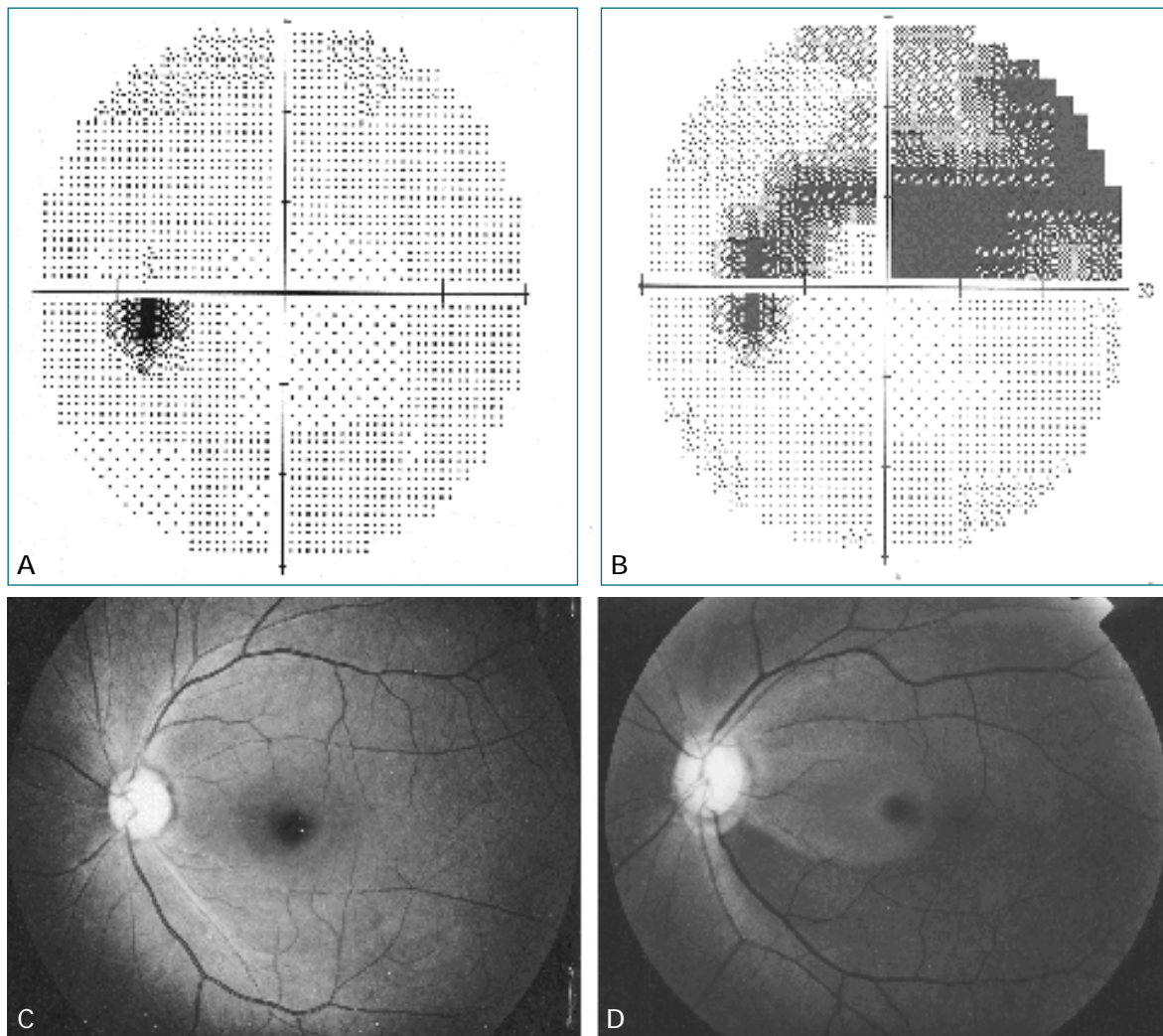
가

(1, 2).

가

가

, 가



2. (A, C) (B, D) (A, B) (C, D) (D),

(tubular vision)

10~21mmHg

가

가

(cup)가

## Pharmacotherapeutics

가 . 6  
18mmHg  
가 12mmHg  
, (4). 30%  
( 1). 5 가 80%  
40%  
( 2). (5).  
가 가 20% 가  
가 , , .  
, ( 가 )  
가 가 , 2 , , ,

### 1.

timolol, car-  
teolol, levobunolol, befunolol, betaxolol  
가 가 20~25%  
, 가  
1 betaxolol  
가

가

가 가 .

가

25~30%

가

. Latanoprost, travoprost, bimatoprost가 .

, unoprostone 가

가 .

. Acetazolamide, methazolamide, dichlo-phenamide

가

2 acetazolamide

20~25% . Apraclonidine bri- , ,

monidine 가 가 brimonid- , , . Metha-

dine 가 zolamide 가

가 가 Stevens - Johnson

. 가 , , .

10%

. 2~3 .

dorzolamide brinzolamide가 . mannitol

15~20% glycerol .

가

가 2~3 2.

pilocarpine , 가

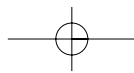
가 ( )

20~25% 2 , ,

가

## Pharmacotherapeutics

15mmHg  
가 30%  
A, B 가 25% 가 10.5mmHg가 20%, 30% 40%  
50%  
가 30~35% 가  
가  
(fixed combination therapy)  
Timolol + dorzolamide,  
Latanoprost + timolol 4.  
1~3 가 가  
가  
3.  
가, 가  
가  
1~2  
가  
2~4  
가  
가  
5.  
가  
가  
30mmHg 30%  
21mmHg가



가

6.

가

(calcium channel blocker) 1 1~2  
(vasospasm)  
가

가

2

가 가

가

가

. NMDA(N - methyl D - Aspartate)  
, glutamate 가 exitotoxic  
pathway memantin 가

가 ginkgo biloba extract

가

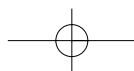
heat 가

shock protein

betaxolol brimonidine  
in vitro

가

가



가

가



1. . . . . 3 . . . . . , 2003
2. Hayreh SS. The role of age and cardiovascular disease in glaucomatous optic neuropathy. Surv Ophthalmol 1999; 43(Suppl 1):

S27 - 42

3. Park KH, Kim YY, Hong C. The Angle - Closure Glaucoma Update 2002. Seoul: New Medical Publications, 2003
4. The AGIS Investigators. The Advanced Glaucoma Intervention Study(AGIS): 7. The Relationship between control of intraocular pressure and visual field deterioration. Am J Ophthalmol 2000; 130: 429 - 40
5. Collaborative Normal - Tension Glaucoma Study Group. The effectiveness of intraocular pressure reduction in the treatment of normal - tension glaucoma. Am J Ophthalmol 1998; 126: 498 - 505



가

\* : 3 , 5 , 1 , 2

\* ( ) : 2 , 5 , 1

\* : , , , , /

가 : [140 - 721] 1 302 - 75

Tel. 02-794-2480, 6587, 2474(ARS 8) Fax. 02-792-1361

대한의사협회