



# 견인 장치를 이용한 방치된 수지 중위 지골 골절 탈구의 치료 - 증례 보고 -

조용운 · 박재형\* · 박세진\* · 이인규\* · 김유진\*<sup>✉</sup>

건국대학교 의과대학 정형외과학교실, 강북삼성병원 정형외과\*

## Treatment of Neglected Proximal Interphalangeal Fracture Dislocation Using a Traction Device - A Case Report -

Yongun Cho, M.D., Jai Hyung Park, M.D., Ph.D.\*, Se-Jin Park, M.D., Ph.D.\*,  
Ingyu Lee, M.D.\*, Eugene Kim, M.D., Ph.D.\*<sup>✉</sup>

Department of Orthopaedic Surgery, College of Medicine, Konkuk University, Chungju,  
Department of Orthopaedic Surgery, Kangbuk Samsung Hospital\*, Seoul, Korea

Received April 8, 2019  
Revised (1st) May 13, 2019  
(2nd) August 13, 2019  
Accepted September 6, 2019

### ✉Correspondence to:

Eugene Kim, M.D., Ph.D.  
Department of Orthopaedic Surgery,  
Kangbuk Samsung Hospital, 29  
Saemunan-ro, Jongno-gu, Seoul  
03181, Korea  
Tel: +82-2-2001-2168  
Fax: +82-2-2001-2176  
E-mail: eugeneos@naver.com

Financial support: None.  
Conflict of interests: None.

This paper reports the use of a traction device for the treatment of neglected proximal interphalangeal fracture dislocations. A 44-year-old man with a fracture dislocation of a right ring finger proximal interphalangeal joint was admitted 17 days after the injury. Closed reduction and external fixation were performed using a dynamic traction device and C-arm under a brachial plexus block. Passive range of motion exercise was started after two weeks postoperatively and active range of motion exercise was started after three weeks. The traction device was removed after five weeks. No infection occurred during the traction period. No subluxation or displacement was observed on the X-ray taken two months postoperatively. The active range of motion of the proximal interphalangeal joint was 90°. The patient was satisfied with the functional result of the treatment with the traction device. The dynamic traction device is an effective treatment for neglected fracture dislocations of the proximal interphalangeal joint of a finger.

**Key Words:** Proximal interphalangeal joint, Fracture dislocation, Dynamic, External fixators

The most catastrophic injury to the proximal interphalangeal (PIP) joint is the fracture dislocation which involves a complete articular surface combined with metaphyseal compaction. This intraarticular fracture of the base of the middle phalanges is uncommon but it is difficult to treat

because it is highly unstable refractory to standard surgical techniques.<sup>1)</sup> The purpose of the treatment is to prevent traumatic arthritis and recover range of motion by early joint exercises.

A wide spectrum of treatments has been introduced, in-

cluding splinting in extreme flexion, extension block splinting, various ingenious traction devices, a force couple, volar plate interposition arthroplasty and numerous open and closed reduction techniques, but have not achieved satisfactory results. Because comminuted fragments make reduction and fixation difficult. Although pin site infection can occur, stiffness is an important complication because pin fixes joint for few weeks.<sup>1)</sup> Thus dynamic traction using spring was introduced. This system makes length of fracture site maintained by traction along axis of middle phalanx and allows for early joint exercise.

This article describes a case of neglected pilon fracture of middle phalanx treated with external fixator combined with dental orthodontic rubber band.

## Case Report

A 44-year-old man was admitted to hospital with painful swelling and limitation of motion of right ring finger PIP joint. He had symptoms after punching 17 days ago, but he could not visit a hospital because of the funeral of his relative. The physical examination showed normal blood circulation and sensation but showed tenderness and limitation of motion on the ring finger PIP joint. Radiographs showed dorsal dislocation of PIP joint and volar lip fracture which

involves more than 50% of articular surface. The fracture of base of distal phalanx was observed on the radiographs (Fig. 1). Sagittal computed tomography (CT) image showed volar lip fracture which involves more than 50% of articular surface (Fig. 2).

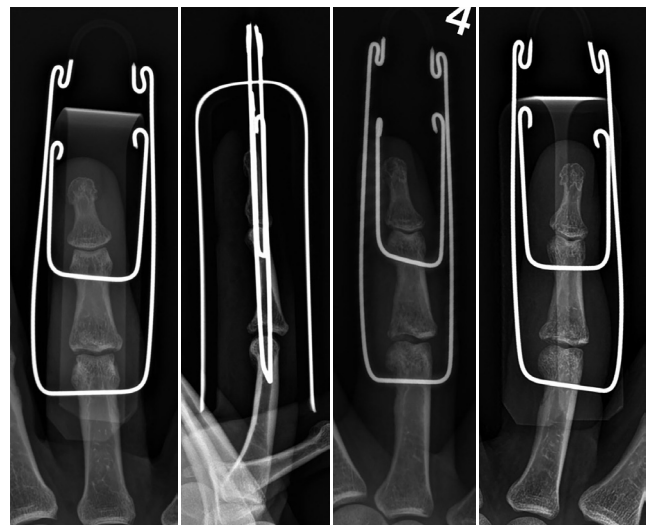
Surgery was performed using Suzuki frame under brachial plexus block. The proximal K-wire (1.1 mm in diameter) was inserted transversely through the center of the head of the proximal phalanx. The distal K-wire which



**Fig. 2.** Sagittal computed tomography image of a dorsal fracture dislocation of the proximal interphalangeal joint and volar lip fracture that involves more than 50% of the articular surface.



**Fig. 1.** Radiographs of the middle phalanx of the ring finger show dorsal dislocation of the proximal interphalangeal joint.



**Fig. 3.** Postoperative radiographs show anatomic reduction of the fracture with K-wire fixation.

was same sized in diameter was placed transversely through the center of the head of the middle phalanx. Then both pins were bent at 90° close to skin (approximately 5 mm), and hooks were created at the end of each protruding wire. Orthodontic rubber bands were linked to hooks of both K-wires. According to the CT image, it looks like the impacted fracture fragment needed to be reduced by joystick technique. However only after traction of PIP joint, we have succeeded to do reduction of subluxation of PIP joint and impacted fracture fragment of base of middle phalanx with a C-arm X-ray device (Fig. 3). Therefore joystick technic was no needed. The nelaton catheter was inserted at the end of the distal K-wire to prevent damage caused by the wire tip (Fig. 4).

The patient was discharged the day after the operation with oral antibiotics to prevent pin site infection. Additional

aluminum finger splint was applied for 1 week. At the start of the second week, passive mobilization was started by himself in day time and kept splint at night. At the start of the third week, splint was off and active mobilization was started. The traction device was removed in the outpatient clinic without anesthesia at the end of the fourth week. The patient was observed clinically and radiologically every week for 4 weeks.

The postoperative follow-up period was 2 months. No pin site infection occurred. The total active range of motion for the PIP joint of the fractured finger was 90°, and for the distal interphalangeal joint of the fractured finger was from 0° in extension to 60° in flexion (Fig. 5). We observed radiologic evidence of union of the base of distal phalanx and reduction state of the PIP joint and fracture fragment of the base of proximal phalanx (Fig. 6). The patient was satisfied with the functional result of treatment with the traction de-

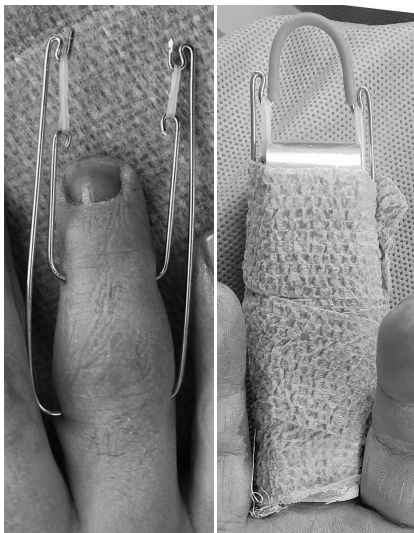


Fig. 4. Medical photos of the postoperative finger.



Fig. 6. Radiographs show the union state of the middle and distal phalanx with an anatomical reduction at postoperative two months.

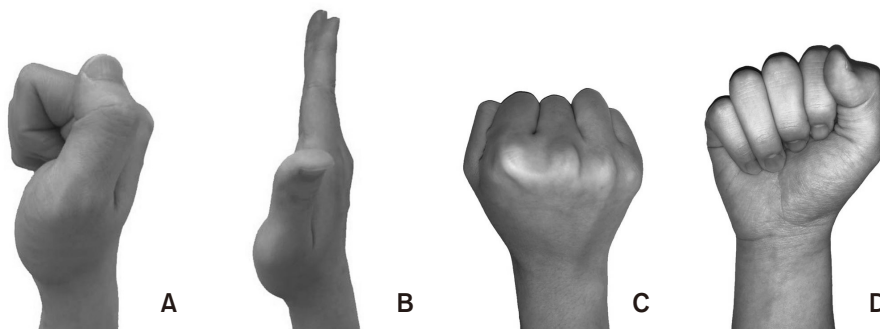


Fig. 5. Four views of hand motion. (A) Lateral view of full flexion, (B) lateral view of full extension, (C) pronation view of full flexion, and (D) supination view of full flexion.

vice.

## Discussion

Fracture dislocation of PIP joint of finger can be divided simply into volar, dorsal, and pilon fracture dislocation. The most common injury pattern is a dorsal fracture dislocation with a volar lip fracture of a middle phalanx. Dorsal fracture dislocations result from axial load with the joint held in a slight degree of flexion. In this case, the longitudinal force causes the volar lip of the middle phalanx to shear off when it impacts the head of the proximal phalanx. Unfortunately, patients often do not seek treatment until the resultant stiffness and swelling becomes unbearable, weeks to months after the initial injury.

The patient in this case underwent surgery in 17 days after injury. In animal models, the peak of soft callus formation occurs 7 to 9 days post trauma with a peak in both type II procollagen and proteoglycan core protein extracellular markers soft callus make it difficult to satisfactory reduction.<sup>2)</sup> In this case, the reason why the reduction was successful is because the patient did not get the conservative treatment such as splint. The patient kept moving his injured finger and too much motion is known to result in delayed healing or even nonunion.<sup>3)</sup>

Treatment options are determined by classification according to fracture pattern, articular involvement and stability.<sup>4)</sup> In this case, surgical treatment was performed because the PIP joint was unstable and more than 50% of the joint surface was involved. Various operative treatment modalities, such as open reduction and internal fixation and closed reduction with K-wires have been suggested. But dissection for open reduction cause tissue trauma and fixation of damaged joint for 3 to 4 weeks with K-wire results in joint stiffness and later joint contracture. The traction device which applies ligamentotaxis maintains joint space and prevents contracture and risk of joint stiffness. Because early mobilization of damaged joint facilitates osteochondral remodeling, decreases adhesions, incidence of stiffness and joint contracture.

Several dynamic traction devices have been developed.

As applied on the joint, concentric articular congruity must be achieved via a combination of longitudinal traction and translation to obtain a successful outcome. Schenck<sup>5)</sup> described a prototype distraction device and range of motion has been recovered to 87° maintaining articular congruity and joint space, but it was bulky that caused discomfort to patients. The force couple splint does not produce ligamentotaxis and cannot be used for comminuted fractures of the PIP joint. Rawes and Oni<sup>6)</sup> reported swan neck deformity as a complication of force couple splint. Duteille et al.<sup>7)</sup> used traction system device using pins and rubber bands to treat complex fractures of the PIP joint of the finger. Badia et al.<sup>8)</sup> reported a modification of the dynamic external fixator. This design does not involve rubber bands but uses longitudinal traction between the pins to induce ligamentotaxis and joint reduction. But such devices without rubber bands do not allow for effective distraction across the proximal phalangeal joint at all degrees of motion. Like this study, a recent study has shown that treatment of middle phalanx base fracture using traction device with dental rubber bands enabled satisfactory reduction and early return of daily life without joint stiffness.<sup>9)</sup>

These authors used dynamic external fixation devices using K-wire and orthodontic rubber band to treat neglected fracture and dislocation of PIP joint. It was simple and easy to apply. It allowed stable reduction state and early exercise at low cost and showed good postoperative range of motion. Surgery techniques using K-wire and rubber bands can be divided into three main ways: two K-wires, two K-wires and rubber bands, and three K-wires and rubber bands. Shin et al.<sup>10)</sup> reported that it is important to check the postoperative maximum range of motion. They also reported that adjusting the traction force more than 0.5 mm compared to the adjacent PIP joint helps to obtain the maximum range of motion. These authors confirmed the reduction and maximum range of motion with an intraoperative C-arm X-ray device.

To prevent pin track infection, the device was removed at the end of the 4th week. Because Syed et al.<sup>1)</sup> reported that retaining the device for up to 6 weeks may increase the risk of pin site infection. When drilling phalanx with K-wire, it

avoided being inserted into the cancellous bone of the metaphysis because it is not strong enough to resist the torque generated at the bone wire interface.

Although this case report has limitations in the absence of the control group, it is clinically meaningful in that fractures, which was neglected for 17 days, was treated with an external fixation device. This device was difficult to active exercise because the rubber bands distracted the joint, but it was possible because the wires inserted into the bone are not fixed together. Further prospective study is needed including more cases and control group.

These authors experienced a PIP joint fracture dislocation that was neglected for 17 days in a 44-year-old man. The patient was able to get a good postoperative range of motion after surgery using the dynamic traction device and had no residual pain. The radiologic images showed good results also. Therefore, dynamic traction device is an effective treatment for neglected fracture dislocation of PIP joint of finger.

## 요 약

저자들은 수상 후 17일이 지난 근위지간 골절 탈구를 역동적 견인 외고정장치를 이용하여 치료한 1예를 발표하고자 한다. 편치 이후에 우측 제4수지 근위지간 골절 탈구가 발생한 44세 남자 환자가 수상 후 17일 후에 내원하였다. 신경차단술하에 C-arm을 사용하여 비관혈적 정복술 및 역동적 견인 외고정술을 시행하였다. 술 후 2주째부터 수동적 관절운동을 시작하였고 술 후 3주째 능동적 관절운동을 시작하였으며 술 후 5주째 외고정기를 제거하였다. 외고정기를 유지할 동안 감염은 발생하지 않았다. 술 후 2달째 추시 방사선 검사상 아탈구 및 전위는 관찰되지 않았으며, 근위지간 관절운동 범위 90도의 운동 범위를 회복하여 일상생활로 복귀하였다. 수상 후 17일이 지난 근위지간 골절 탈구를 역동적 견인 외고정장치로 치료한 결과 만족스러운 골절 정복과 관절 운동 범위를 회복할 수 있었다.

**색인 단어:** 근위지간 관절, 골절 탈구, 역동적, 외고정기

## ORCID

조용운, <https://orcid.org/0000-0002-9213-6989>

박재형, <https://orcid.org/0000-0001-9735-4291>

박세진, <https://orcid.org/0000-0002-3941-1857>

이인규, <https://orcid.org/0000-0001-9804-3612>

김유진, <https://orcid.org/0000-0002-5979-3389>

## References

1. Syed AA, Agarwal M, Boome R: Dynamic external fixator for pilon fractures of the proximal interphalangeal joints: a simple fixator for a complex fracture. *J Hand Surg Br*, 28: 137-141, 2003.
2. Einhorn TA: The cell and molecular biology of fracture healing. *Clin Orthop Relat Res*, (355 Suppl): S7-S21, 1998.
3. Green E, Lubahn JD, Evans J: Risk factors, treatment, and outcomes associated with nonunion of the midshaft humerus fracture. *J Surg Orthop Adv*, 14: 64-72, 2005.
4. Bernstein J, Monaghan BA, Silber JS, DeLong WG: Taxonomy and treatment: a classification of fracture classifications. *J Bone Joint Surg Br*, 79: 706-707; discussion 708-709, 1997.
5. Schenck RR: Dynamic traction and early passive movement for fractures of the proximal interphalangeal joint. *J Hand Surg Am*, 11: 850-858, 1986.
6. Rawes ML, Oni OO: Swan-neck deformity as a complication of the Agee technique. *J Hand Surg Br*, 20: 255-257, 1995.
7. Duteille F, Pasquier P, Lim A, Dautel G: Treatment of complex interphalangeal joint fractures with dynamic external traction: a series of 20 cases. *Plast Reconstr Surg*, 111: 1623-1629, 2003.
8. Badia A, Riano F, Ravikoff J, Khouri R, Gonzalez-Hernandez E, Orbay JL: Dynamic intradigital external fixation for proximal interphalangeal joint fracture dislocations. *J Hand Surg Am*, 30: 154-160, 2005.
9. Kim SW, Lee CC, Ko SH, Hwang IY, Kim MS, Jin WY: Use of a distraction dynamic external fixator in the treatment of comminuted middle phalanx base fractures. *J Korean Fract Soc*, 32: 1-5, 2019.
10. Shin EH, Park JS, Lee TJ: Clinical results of dynamic external fixation for proximal interphalangeal joint fracture dislocation. *J Korean Soc Surg Hand*, 21: 29-37, 2016.