

The comparison of IL-6, elastase and $\alpha 1$ -PI expressions in human chronic periodontitis with type 2 diabetes mellitus

Jae-Wan Park, Jae-Mok Lee*

Department of Periodontology, School of Dentistry, Kyungpook National University

I. INTRODUCTION

Diabetes mellitus is an important risk factor of periodontal diseases. It is one of the main contributing factors for periodontal disease and also limiting factor for periodontal treatments such as implant therapy. Although diabetes itself does not cause periodontitis, periodontal disease progresses more rapidly and leads to more tooth losses in patients with poorly controlled blood glucose¹⁻⁵. Severe periodontitis has been associated with an increased risk of poor glycemic control and, in turn untreated advanced periodontal disease can deteriorate the metabolic control of diabetes⁶. Various pathogenetic factors have been suggested to explain the increased prevalence and severity of periodontitis in diabetes^{7,8}.

Reduced polymorphonuclear leukocyte(PMN) function has been found in patients with diabetes. This impairment of function was noted in assays of PMN chemotaxis, adherence and phagocytosis⁹⁻¹¹. Studies of PMN defects suggest that this dysfunction could lead to impaired host resistance to infection¹². Gingival fibroblasts from diabetic patients synthesize less collagen compared to non-diabetic subjects¹³. In addition to decreased collagen production, crevicular fluid collagenolytic activity also was increased in diabetic patients¹⁴. This increased crevicular fluid collagenase activity appears to be primarily of neutrophil origin. Non-enzymatic glycosylation process results in increased cross-linking between collagen molecules. This cross-linking of collagen significantly contributes to reduced solubility and de-

* Correspondence: Jae-Mok Lee, Department of Periodontology, School of Dentistry, Kyungpook National University, 50, Samduk 2Ga, Jung-Gu, Daegu, 700-422, Korea (E-mail: leejm@knu.ac.kr)

creases turnover rate¹⁵⁻¹⁷. Vascular changes are common in patients with diabetes. Basement membrane proteins become glycosylated in a hyperglycemic environment, with thickening and changes in the physical properties^{18,19}.

Chronic Periodontitis is an inflammatory disease initiated and maintained by bacterial plaque and its metabolic products that trigger the local infiltration of inflammatory cells associated with the breakdown of collagenous extracellular matrices (ECM)²⁰. The degradation of gingival connective tissue during periodontitis could be a disturbance of cell-cell and cell-matrix interactions involving the production of enzymes, activators, inhibitors, and regulatory molecules such as cytokines and growth factors^{21,22}.

Interleukin-6(IL-6) is recognized factors for progression of gingivitis to periodontitis.

It has been suggested that IL-6 accumulation within inflamed gingiva is also a significant factor in progression of periodontal disease. IL-6 concentrations become elevated later in the pathogenesis of periodontal disease^{23,24} or at refractory sites^{25,26}. IL-6 increase the potential for periodontitis and alveolar bone loss, as this cytokine has been implicated in the tissue destruction characteristic of this disease^{27,28}.

Elastase is secreted upon release of azurophilic granules during neutrophil phagocytosis, stimulation, and cell lysis. Parts of these proteinase is bound to the external surface of the cell membrane after their transport from the granules. Membrane-bound leukocyte elastase has a strong activity against fi-

bronectin and type IV(basement membrane) collagen²⁹. Consequently elastase may be an important enzyme facilitating neutrophil transmigration through subendothelial and subepithelial basement membranes. The secreted elastase has potential for extensive degradation of extracellular matrix^{30,31}. Elastase activity in gingival crevicular fluid(GCF) of humans is elevated during adult periodontitis and this analyte has been used as an indicator to predict gingival attachment loss in longitudinal studies on humans with periodontal disease^{32,33}.

α_1 -Proteinase Inhibitor(α_1 -PI), has been implicated in the modulation of periodontal inflammation and destruction³⁴. This plasma protein, produced by liver cells and monocytes, is an acute phase reactant and elevated during inflammation and other disease conditions³⁵. It was reported that the α_1 -PI rapidly forms a 1:1 inactive complex with the enzyme and the α_1 -PI/elastase complex is also increased during gingival inflammation in regulating elastase activity³⁶. Conversely, deficiency of α_1 -PI levels in serum can result in several disease processes associated with excess degradation of elastase substrates(e.g. elastic fibers, fibronectin, proteoglycan)³⁷. Several groups have reported about relation of elastase-complex with α_1 -PI in GCF^{33,38}.

In inflammatory response, the roles and interactions of IL-6, elastase and α_1 -PI are not clear. The relative contribution of IL-6, elastase and α_1 -PI in the pathogenesis of periodontitis is still not entirely established. Moreover none of the in vivo studies simul-

taneously analysed each IL-6, elastase and α_1 -PI and its interrelationship for the diabetic and nondiabetic patients with chronic periodontitis. The purposes of this study were to compare and quantify the expression of IL-6, elastase, α_1 -PI and α_1 -PI/elastase relation in the gingival tissues of patients with type 2 diabetes mellitus and healthy adults with chronic periodontitis.

II. MATERIALS AND METHODS

1. Study population and Tissue sampling

Study population consisted of 8 patients with type 2 diabetes and chronic periodontitis, 8 patients with chronic periodontitis, and 8 healthy individuals. Marginal gingival tissue samples were obtained by internal bevel incision at the time of periodontal surgery (including surgical crown lengthening) or tooth extraction and informed consent was obtained from all of the participants before the surgery.

Clinical criteria of gingiva (Sulcus bleeding index value, probing depths) and radiographic evidences of bone resorption, each gingival sample was divided into the three groups. Group 1 (normal, $n=8$) is clinically healthy gingiva without bleeding and no evidence of bone resorption or periodontal pockets, obtained from systemically healthy 8 patients. Group 2 (chronic periodontitis, $n=8$) is inflamed gingiva from patients with chronic periodontitis. The diagnosis of

chronic periodontitis was established on the basis of clinical and radiographic criteria (bone resorption) according to the classification system for periodontal disease and condition. All patients of group 2 were systemically healthy and had more than one periodontal pockets ≥ 5 mm and at least one pocket with ≥ 4 mm loss of attachment. All gingival samples were obtained from the teeth with probing depth ≥ 5 mm, swelling of the marginal gingiva, and bleeding corresponding to gingival sulcus bleeding indexes 3 according to Mühlmán and Son³⁹⁾. Group 3 (chronic periodontitis & type 2 DM, $n=8$) is inflamed gingiva from patients with chronic periodontitis associated with type 2 diabetes. Patients in group 3 were diagnosed type 2 diabetes mellitus since 6 months and showed above 200 mg/dl blood glucose level in postprandial 2 hours. Patients in group 2 & 3 have similar periodontal condition, but systemically patients in group 2 were healthy and patients in group 3 had type 2 diabetes with treatment. Gingival sample were obtained by similar way described above.

Following surgery, excised tissue specimens were immediately placed on liquid nitrogen and subsequently frozen (-70°C).

2. Protein Isolation and Western blotting

For Western blotting, as previously described technique by Kim et al⁴⁰⁾ frozen tissues were homogenized in RIPA lysis buffer (10 mM EDTA, 0.15M NaCl) with

1:30 diluted protease inhibitor cocktail (Roche, Germany)⁴¹). The lysates were sonicated 3 times for 10 seconds and centrifuge at 12,000g for 15 minutes. Protein concentrations of supernant were routinely determined by a Bradford protein assay (Quick Start, BIO-RAD, USA) using BSA as standard.

Lysates were boiled in SDS samples buffer (1M Tris-Cl (pH6.8), 40% glycerol, 8% SDS, 2% mercapto-ethanol, 0.002% Bromophenole blue). Prepared samples were separated by 15 % sodium dodecyl sulfate (SDS)- polyacrylamide gels and transferred to a polyvinylidene difluoride membrane.

The membranes were subsequently blocked in Tris-buffered saline (TBS) containing 5% powdered milk and 1% BSA for 1 hour, and then incubated with polyclonal anti-IL-6, anti-elastase, and anti- α_1 -PI (Santa Cruz Biotechnology, Inc. USA) antibody for 1.5 hours at room temperature.

The membranes were washed (five times for 5 minutes with Tween 20) and incubated with a horseradish peroxidase(HRP)- conjugated goat anti-rabbit secondary antibody for anti-IL-6 antibody and donkey anti-goat secondary antibody for anti-elastase, anti- α_1 -PI antibody (diluted 1: 2000 in TBS) for 1 hour at room temperature. After additional washing (five times for 5 minutes with Tween 20) the Western blot procedure was completed with an ECL Plus development kit (Amsterdam, Beckinghamshire, U.K.)

The quantification analysis of IL-6, elastase, α_1 -PI expression was performed using a densitometer (Image Gauge V 3.46,

Koshin Graphic Systems, FUJI PHOTO FILM CO, Japan). After normalization to β -actin (Abcam[®] U.K.) in each sample, level of IL-6, elastase and α_1 -PI were expressed as a ratio of IL-6 or elastase or α_1 -PI/ β -actin and the differences of density between 3 groups were determined. α_1 -PI/elastase ratio was also compared.

3. Statistical Analysis of the Western blot results

All data were presented as means \pm standard deviation and results were statistically analyzed. The IL-6, elastase, α_1 -PI levels and α_1 -PI/elastase ratio among each 3 groups were compared using one way ANOVA followed by Tukey test. P value < 0.05 was considered to statistically significant.

III. RESULTS

Both chronic periodontitis group & chronic periodontitis with type 2 DM group showed the expression of IL-6, elastase and α_1 -PI in all samples. To compare IL-6 expression levels in human gingiva with chronic periodontitis with or without associated to Type 2 diabetes mellitus, IL-6 specific antibodies were used to detect the cytokine in the tissues (Figure 1A, B). Representative Western blot data were presented in Figure 1A. The expression levels of β actin were also measured by anti- β actin specific western blot analysis. In order to quantify the level of IL-6 expression in the groups, the

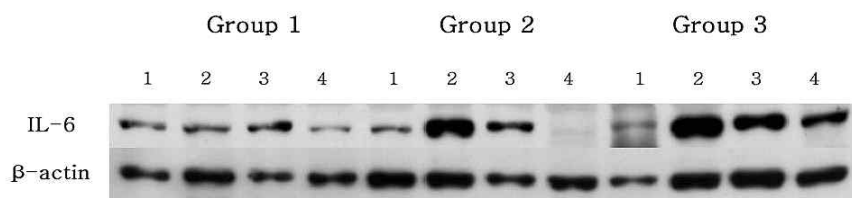


Figure 1A. IL-6 Western analysis showing 4 representative samples in each group. IL-6 corresponding to molecular weight 21kDa was shown to be expressed in all samples including healthy gingiva, and the expression levels of IL-6 were increased in order of group1, group2, group3. In order to quantify the IL-6 levels, β -actin levels were also performed.

Group 1 : healthy gingiva from systemically healthy person

Group 2 : inflamed gingiva from patient with chronic periodontitis

Group 3 : inflamed gingiva from patient with chronic periodontitis and type 2 DM

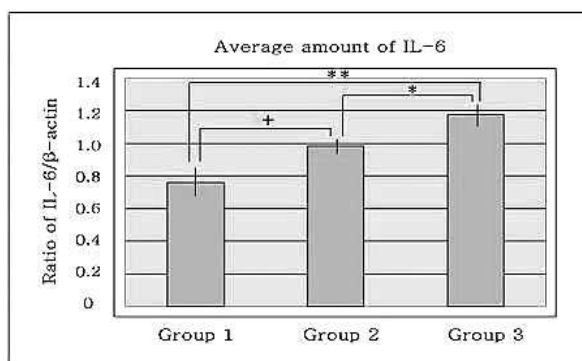


Figure 1B. Graphics showing the average amounts (Ratio of IL-6/ β -actin) and standard deviation of IL-6 in group 1, 2 and 3. In the inflamed gingiva with diabetes (group 3), IL-6 was highest in to group 3.

Group 1 : healthy gingiva from systemically healthy person

Group 2 : inflamed gingiva from patient with chronic periodontitis

Group 3 : inflamed gingiva from patient with chronic periodontitis and type 2 DM

+significant difference between group 1 and group 2 ($P < 0.05$)

* significant difference between group 2 and group 3 ($P < 0.05$)

** significant difference between group 1 and group 3 ($P < 0.05$)

expression levels of IL-6 in each sample were measured by densitometer. Then IL-6 expression levels were normalized by β actin (ratio of IL-6/ β actin). The levels of gingival normalized IL-6 expression were summarized as a graph in Figure 1B

The mean amount of IL-6 expression (ratio of IL-6/ β actin) were 0.793 ± 0.135 in

group 1, 0.962 ± 0.113 in group 2, 1.148 ± 0.142 in group 3. The expression levels of IL-6 among group 1, group 2 and group 3 were significantly different and were highest in group 3. ($P < 0.05$)

The comparison of elastase expression levels were also studied by Western blot analysis using elastase specific antibody which

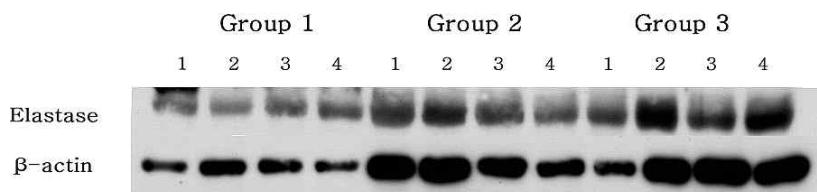


Figure 2A. Elastase Western analysis showing 4 representative samples in each group. Elastase corresponding to molecular weight 30kDa was shown to be expressed in all samples including healthy gingiva. The expression levels of elastase were increased in order of group1, group2, group3. In order to quantify detected elastase, β -actin levels were also measured.

Group 1 : healthy gingiva from systemically healthy person

Group 2 : inflamed gingiva from patient with chronic periodontitis

Group 3 : inflamed gingiva from patient with chronic periodontitis and type DM

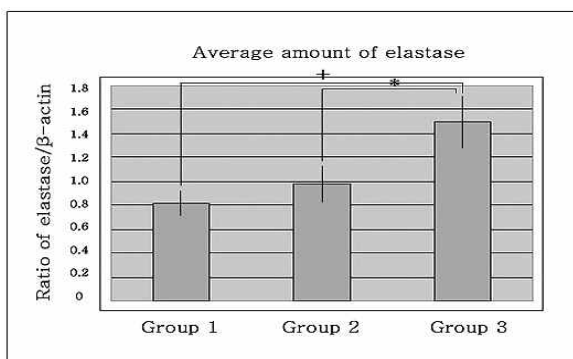


Figure 2B. Graphics showing the average amounts (Ratio of elastase/ β -actin) and standard deviation of elastase in group 1, 2 and 3. In the inflamed gingiva with diabetes (group 3), elastase seemed to be increased compared to group 1 and group 2.

Group 1 : healthy gingiva from systemically healthy person

Group 2 : inflamed gingiva from patient with chronic periodontitis

Group 3 : inflamed gingiva from patient with chronic periodontitis and type 2 DM

+ significant difference between group 1 and group 3 ($P < 0.05$)

* significant difference between group 2 and group 3 ($P < 0.05$)

detected about 30kDa molecular weight of elastase in all three groups (Figure 2A). The levels of elastase expression were also quantified with β -actin normalization (Figure 2B). The mean amounts of elastase expression (ratio of elastase/ β -actin) were 0.818 ± 0.112 in group 1, 0.977 ± 0.174 in group 2 and 1.500 ± 0.231 in group 3. There was no significant difference between group 1 and

group 2, but the differences between group 1 and group 3 and between group 2 and group 3 were statistically significant ($P < 0.05$).

In the study of α_1 -PI expression levels using Western blot analysis, molecular weight of α_1 -PI was identified as 42kDa size (Figure 3A). The mean amounts of α_1 -PI expression (ratio of α_1 -PI/ β -actin) were 0.892 ± 0.053 in group 1, 0.989 ± 0.054 in group 2 and $1.107 \pm$

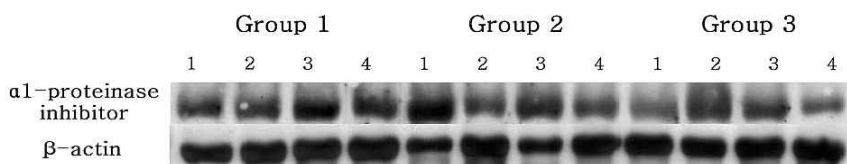


Figure 3A. α_1 -PI Western analysis showing 4 representative samples in each group. α_1 -PI corresponding to molecular weight 42kDa was shown to be expressed in all samples including healthy gingiva and the expression level of α_1 -PI was increased in patients with type 2 diabetes mellitus than in control healthy subjects. In order to quantify detected elastase, β -actin levels were also measured.

Group 1 : healthy gingiva from systemically healthy person

Group 2 : inflamed gingiva from patient with chronic periodontitis

Group 3 : inflamed gingiva from patient with chronic periodontitis and type DM

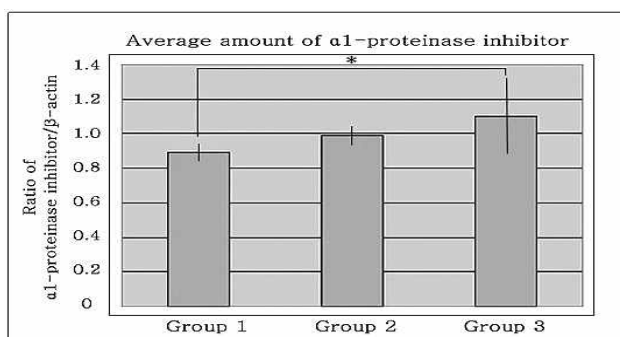


Figure 3B. Graphics showing the average amounts (Ratio of α_1 -PI/ β -actin) and standard deviation of α_1 -PI in group 1, 2 and 3. In the inflamed gingiva (with or without diabetes, group 2 & 3), the levels of α_1 -PI was higher compared to healthy gingiva.

Group 1 : healthy gingiva from systemically healthy person

Group 2 : inflamed gingiva from patient with chronic periodontitis

Group 3 : inflamed gingiva from patient with chronic periodontitis and type 2 DM

* significant difference between group 1 and group 3 ($P < 0.05$)

0.226 in group 3. The significant difference was observed only in between group 1 and group 3. ($P < 0.05$)

The ratios of α_1 -PI/elastase were also calculated, and compared between groups. The mean amounts of α_1 -PI/elastase ratio were 1.113 ± 0.192 in group 1, 1.038 ± 0.177 in group 2 and 0.742 ± 0.114 in group 3. The ratio was decreased in the order of group 1, 2, and 3. The differences between group 1 and group 2 and between group 1 and group

3 were statistically significant. ($P < 0.05$)

In the interrelationship of IL-6, elastase and α_1 -PI expressions, as expression of IL-6 was increased, elastase expressions showed increasing tendency in chronic periodontitis associated to type 2 DM. Although α_1 -PI levels were increased in DM according to increase of IL-6 and elastase, α_1 -PI/elastase ratios were decreased in chronic periodontitis with type 2 DM.

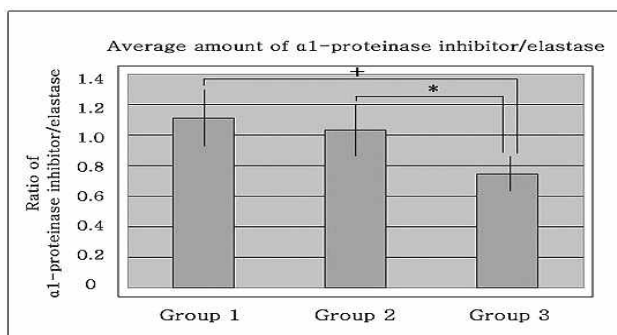


Figure 4. Graphics showing the average amounts and standard deviation of α_1 -PI/elastase ratio. The inflamed gingiva with DM is lower than group 2 and 3.

Group 1 : healthy gingiva from systemically healthy person

Group 2 : inflamed gingiva from patient with chronic periodontitis

Group 3 : inflamed gingiva from patient with chronic periodontitis and type 2 DM

+significant difference between group 1 and group 3 ($P < 0.05$)

* significant difference between group 2 and group 3 ($P < 0.05$)

IV. DISCUSSION

Multiple studies have demonstrated the link between diabetes and periodontal disease in human subjects. Although diabetes itself does not cause periodontitis, periodontal disease progresses more rapidly and leads to more tooth loss in poorly controlled patients^{3,4}. Various pathogenetic factors have been suggested to explain the increased prevalence and severity of periodontitis in diabetes^{3,4}.

The purpose of this study was to quantify and compare the expression of IL-6, elastase and α_1 -PI in the gingival tissues of the patients with chronic periodontitis associated to type 2 DM, in order to understand the contribution of these proteins to periodontal destruction in type 2 diabetic patients, especially elastase-mediated host response in type 2 diabetic patients.

The amount of IL-6 expression was higher

in inflamed gingiva with chronic periodontitis associated to type 2 DM than in healthy gingiva from systemically healthy person and inflamed gingiva from patients with chronic periodontitis. The differences among three groups were statistically significant between group 1, 2 and group 3. ($P < 0.05$). (Figure 1B)

When the expression levels of IL-6 between chronic periodontitis without type 2 DM and chronic periodontitis with type 2 DM were compared, chronic periodontitis with type 2 DM showed higher level than chronic periodontitis without DM. These results were similar with previous reports seen in inflammatory conditions^{23,24,26}. It was considered that IL-6 levels were overexpressed in inflamed gingiva with or without type 2 DM and chronic periodontitis patient with type 2 DM expressed higher cytokine activity and inflammatory response.

It was reported the impaired PMN func-

tion in diabetes regarding to chemotaxis, chemokinesis and degranulation^{41,42)}. This might explain the increased susceptibility of diabetic patients to various infectious diseases including periodontitis. These results make it possible to consider that PMN dysfunction may be reflected in the gingival neutrophil degranulation product, which is released from neutrophils recruited to inflammatory gingiva.

The amounts of elastase expression were higher in chronic periodontitis with type 2 DM compared to chronic periodontitis group of systemic healthy person and healthy gingiva from systemically healthy person.

The levels in inflamed gingiva with type 2 DM were higher than chronic periodontitis in systemic healthy person and there was statistically significant difference between inflamed gingiva from patients with chronic periodontitis and inflamed gingiva with chronic periodontitis associated to type 2 DM. These results were similar with the results reported in GCF of chronic periodontitis condition of various report⁴³⁻⁴⁵⁾. It is assumed that IL-6 stimulated elastase activity in chronic periodontitis associated with type 2 DM. But, it is also considered that other cytokines or other tissue degradation enzymes are involved complexly in elastase expression.

α_1 -PI has been studied in this study. The level of α_1 -PI was increased in inflamed gingiva. In inflammatory response, as the level of elastase increased, α_1 -PI level was increased, but in the case of inflamed gin-

giva with type 2 DM, the elastase value was not proportional to α_1 -PI. There was significant difference between group 1 and group 3.

The comparison of α_1 -PI/elastase ratio was also studied in some previous reports as an important factor in inflammatory condition. Some studies had investigated balance between α_1 -PI and elastase in GCF^{43,46)} and a few reports in whole mouth saliva⁴⁷⁾. It was considered that the ratio was decreased in inflamed gingiva from patients with chronic periodontitis and inflamed gingiva with chronic periodontitis associated to type 2 DM. There was significant difference between group 1, 2 and 3. It was considered that α_1 -PI activity was suppressed because the relative amount of α_1 -PI was decreased due to the relative increase of elastase in chronic periodontitis group without DM. The ratio in DM group was further decreased. Neutrophils and monocytes migrating into the gingival crevice were probably the main source of elastase while α_1 -PI would have derived from extravasated serum, possibly from some local production by macrophage^{48,49)}. It was considered that α_1 -PI activity of playing a role in controlling elastase activity was decreased in DM and it is suggested that defensive factors are associated with immune response related to neutrophils, monocytes, and macrophage were further decreased in DM group, but relationship with other immune factors should also be considered.

In interrelationship between IL-6, elastase

and α -PI, α -PI level of Group 3 showed increasing pattern according to increasing tendency of IL-6 and elastase expressions in chronic periodontitis associated to type 2 DM. It was shown positive relation between IL-6 and elastase expression, although they were shown reverse effect to α -PI ratio in inflamed tissue with DM

In inflamed gingiva from patient with chronic periodontitis and type 2 DM, despite of increasing IL-6 and elastase, α -PI values were not significantly different from the gingiva with chronic periodontitis.

In conclusion, this study demonstrated that the expression levels of IL-6 and elastase had increasing tendency and positive relation in inflamed tissue and inflamed tissue associated with DM. It is suggested that IL-6 and elastase may be partly involved in the progression of periodontal inflammation associated with type 2 DM. The α -PI/elastase ratio also was further decreased in DM group. It is considered that as the quantity and activity of defensive factors associated with immune response is depressed in DM group, the inflammatory response in DM is higher, so the IL-6 and elastase levels are higher.

This ratio of α -PI/elastase also may be important measuring inflammatory factors in the progression of periodontal inflammation associated to type 2 DM.

Finally, it seemed that more studies are needed to investigate the effect and inter-relationship between inflammatory enzymes and other immune factors that affect the

progression of periodontal disease in inflammatory tissue with DM.

V. SUMMARY

The purposes of this study were to compare and quantify the expression of IL-6, elastase and α -PI in the gingival tissues of patients with type 2 diabetes mellitus and healthy adults with chronic periodontitis.

Gingival tissue samples were obtained during periodontal surgery or tooth extraction. According to the patient's systemic condition & clinical criteria of gingiva, each gingival sample was divided into three groups. Group 1 (n=8) is clinically healthy gingiva without bleeding and no evidence of bone resorption or periodontal pockets, obtained from systemically healthy 8 patients. Group 2 (n=8) is inflamed gingiva from patients with chronic periodontitis. Group 3 (n=8) is inflamed gingiva from patients with chronic periodontitis associated with type 2 diabetes. Tissue samples were prepared and analyzed by Western blotting. The quantification of IL-6, elastase and α -PI were performed using a densitometer and statistically analyzed by one-way ANOVA followed by Tukey test.

1. The expression levels of IL-6 showed increasing tendency in group 2 and 3, and It was highest in group 3.
2. The expression of elastase showed increasing tendency in group 2 and 3, and It was highest in group 3.
3. The expression of α -PI showed increas-

ing tendency in group 3 compared to group 1.

4. The α_1 -PI/elastase ratio was decreased in group 2 and 3 compared to group 1, especially most decreased in group 3.
5. As IL-6 levels were increasing, elastase showed increasing tendency in group 3, and although IL-6 and elastase levels were increasing, α_1 -PI level in group 3 showed slightly increasing pattern comparing to group 1.

In conclusion, this study demonstrated that the expression levels of IL-6 and elastase will be inflammatory markers of periodontal inflamed tissue and DM. The α_1 -PI/elastase ratio also may be important measuring inflammatory factors in the progression of periodontal inflammation associated to type 2 DM.

VI. REFERENCES

1. Uemura S, Matsushita H, Li W et al. Diabetes Mellitus Enhances Vascular Matrix Metalloproteinase Activity. Role of Oxidative Stress. *Circulation Research* 2001; 88:1291-1298
2. Portik-Dobos V, Anstadt MP, Hutchinson J, Bannan M and Ergul A. Evidence for a Matrix Metalloproteinase Induction/Activation System in Arterial Vasculature and Decreased Synthesis and Activity in Diabetes. *Diabetes* 2002;51:3063-3068.
3. Emrich LJ, Shlossman M and Genco RJ. Periodontal disease in non- insulin dependent diabetes mellitus. *J Periodontol* 1991;62:123-129.
4. Taylor GW, Burt BA, Becker MP, Genco RJ, Shlossman M, Knowler WC and Pettitt DJ. Non-insulin dependent diabetes mellitus and alveolar bone loss progression over 2 years. *J Periodontol* 1998;69:76-83.
5. Collin H-L, Uusitupa M and Niskanen L. Periodontal findings in elderly patient with non-insulin dependent diabetes mellitus. *J Periodontol* 1998;69:962-966.
6. Salvi GE, Yalda B, Collins JG, et al. Inflammatory Mediator Response as a Potential Risk Marker for Periodontal Diseases in Insulin-Dependent Diabetes mellitus patients. *J Periodontol* 1997;68: 127-135.
7. AAP Position Paper. Diabetes and periodontal disease. *J Periodontol* 1999;70:935 -949.
8. Yalda B, Offenbacher S and Collins JG. Diabetes as a modifier of periodontal disease expression. *Periodontology* 2000 1994; 6:37-49.
9. Mowat AG, Baum J. Chemotaxis of polymorphonuclear leucocytes from patients with diabetes mellitus. *N Engl J Med* 1971;284:621-627.
10. Bagdade JD, Stewart M, Walters E. Impaired granulocyte adherence. A reversible defect in host defense in patients with poorly controlled diabetes. *Diabetes* 1978;27:677-681.
11. Wilson RM, Reeves WG. Neutrophil phagocytosis and killing in insulin-dependent diabetes. *Clin Exp Immunol* 1986;63: 478-484.
12. Iacono VJ, Singh S, Golub LM, Ramamurthy NS, Kaslick R. In vivo assay of crevicular leukocyte migration. Its development and potential applications. *J Periodontol* 1985;56:56-62.
13. el-Kishky M, Mahfouz SA, el-Habbak SM. An in vitro study of hydroxyproline synthesis by gingival fibroblasts in pa-

- tients with juvenile diabetes. *Egypt Dent J* 1986;32:15-27.
14. Sorsa T, Ingman T, Suomaainen K, et al. Cellular source and tetracycline inhibition of gingival crevicular fluid collagenase of patients with labile diabetes mellitus. *J Clin Periodontol* 1992;19:146-149.
 15. Seibold JR, Uitto J, Dorwart BB. Collagen synthesis and collagenase activity in dermal fibroblasts from patients with diabetes mellitus and digital sclerosis. *J Lab Clin Med* 1985;105:664-667.
 16. Vlassara H. Non-enzymatic glycosylation. *Diabetes Annual* 1991;6:371-389.
 17. Salmela PI, Oikarinen A, Pirttiaho H. Increased non-enzymatic glycosylation and reduced solubility of skin collagen in insulin-dependent diabetic patients. *Diabetes Res* 1989;11:115-120.
 18. Brownlee M, Cerami A, Vlassara H. Advanced products of nonenzymatic glycosylation and the pathogenesis of diabetic vascular disease. *Diabetes Metab Rev* 1988;4:437-451.
 19. Sastrowijoto SH, van der Velden U, et al. Improved metabolic control, clinical periodontal status and subgingival microbiology of healthy diseased periodontal pockets in Type I diabetes mellitus patients. *J Clin Periodontol* 1989;16:233-242.
 20. Listgarten MA. Pathogenesis of periodontitis. *J Clin Periodontol* 1986;13:418-425.
 21. Birkedal-Hansen H. Role of matrix metalloproteinases in human periodontal diseases. *J Periodontol* 1993;64:474-484.
 22. Reynolds JJ and Meikle MC. Mechanisms of connective tissue matrix destruction in periodontitis. *Periodontol* 2000 1997;14: 144-157.
 23. Johnson RB, Serio FG, Dai X. Vascular endothelial growth factors and progression of periodontal diseases. *J Periodontol* 1999;70:848-852.
 24. Geivellis M, Turner DW, Pederson ED, Lamberts B. Measurements of interleukin-6 in gingival crevicular fluid from adults with destructive periodontal disease. *J Periodontol* 1993;64:980-983.
 25. Reinhardt RA, Masada MP, Kaldahl WB et al. Gingival fluid IL-1 and IL-6 levels in refractory periodontitis. *J Clin Periodontol* 1993;20:225-231.
 26. Guillot JL, Pollock SM, Johnson RB. Gingival IL-6 concentration following phase I therapy. *J Periodontol* 1995;66: 667-672.
 27. Yamazaki K, Nakajima T, Gemmell E, et al. IL-4 and IL-6 producing cells in human periodontal disease tissue. *J Oral Pathol Med* 1994;23:347-353.
 28. Irwin CR, Myrillas TT. The role of IL-6 in the pathogenesis of periodontal disease. *Oral Dis* 1998;4:43-47.
 29. Owen CA, Campbell EJ. The cell biology of leukocyte-mediated proteolysis. *J Leukoc Biol* 1999;65:137-150.
 30. Dallegri F, Ottonello L. Tissue injury in neutrophilic inflammation. *Inflamm Res* 1997;46:382-391.
 31. Watanabe H, Hattori S. Human neutrophil elastase: degradation of basement membrane components and immunolocalization in the tissue. *J Biochem* 1990;108:753-759.
 32. Armitage CG, Jeffcoat MK, Chadwick DE. Longitudinal evaluation of elastase as a marker for the progression of periodontitis. *J Periodontol* 1994;65:120-128.
 33. Mansson SA, Soder B, Kari K, Meurman JH. Influence of combinations of bacteria on the levels of Prostaglandin E2, IL-1beta, and granulocyte Elastase in gingival crevicular fluid and on the severity of periodontal disease. *J Periodontol* 2006;77:1025-1031.

34. Sandholm L. Proteases and their inhibitors in chronic inflammatory periodontal disease. *J Clin Periodontol* 1986;13:19-26.
35. Rinehart AR, Mallya SK, Simon SR. Human α_1 -proteinase inhibitor binds to extracellular matrix in vitro with retention of inhibitory activity. *Am J Respir Cell Mol Biol* 1993;9:666-679.
36. Giannopoulou C, Andersen E, Demeurisse C, Cimasoni G. Neutrophil elastase and its inhibitors in human gingival crevicular fluid during experimental gingivitis. *J Dent Res* 1992;71:359-363.
37. Janoff A. Elastases and emphysema: current assesment of the proteinase-anti-proteinase hypothesis. *Am Rev Respir Dis* 1985;132:417-433.
38. Adonogianaki E, Mooney J, Kinane DF. The ability of gingival crevicular fluid acute phase proteins to distinguish health, gingivitis and periodontitis sites. *J Clin Periodont* 1992;19:98-102.
39. Mühlman HR and Son SH. Gingival Bleeding - a leading symptom in initial gingivitis. *Helvetica Odontologica Acta* 1971;15:107-113.
40. Kim DH, Park EK, Shin HI et al. The comparison of MMP-2, MMP-9 and tumor necrosis factor- α expressions in human gingiva with chronic periodontitis with or without associated to Type 2 Diabetes Mellitus. *Journal of Korean Academy of Periodontology* 2006;36:409-426.
41. Cho JY, Xing S, Liu X et al. Expression and activity of human Na⁺/I⁻ symporter in human glioma cells by adenovirus-mediated gene delivery. *Gene Therapy* 2000;7:740-749.
42. Golub LM, Stiegel K and Ramamurty NS. Some characteristics of collagenase activity in gingival crevicular fluid and its relationship to gingival diseases in human. *J Dent Res* 1976;55:1049-1057.
43. R. Buchmann, A. Hasilik, T.E. Van Dyke, and D.E. Lange. Amplified crevicular leukocyte activity in aggressive periodontal disease. *J Dent Res* 2002;81:716-712.
44. Figueredo CMS and Gustafsson A. Activity and inhibition of elastase in GCF. *J Clin Periodontol* 1998;25:531-535.
45. Uitto V-J, Nieminen A, Coli J, Hurttia H, Larjava H. Oral fluid elastase as an indicator of periodontal health. *J Clin Periodontol* 1996;23:30-37.
46. Cox SW, Rodriguez-Gonzalez EM, Booth V and Eley BM. Secretory leukocyte protease inhibitor and its potential interactions with elastase and cathepsin B in gingival crevicular fluid and saliva from patients with chronic periodontitis. *J Periodont Res* 2006;41:477-485.
47. Pederson ED, Stanke SR, Whitener SJ et al. Saliva levels of α_2 -macroglobulin, α_1 -antitrypsin, C-reactive protein, cathepsin G and elastase in humans with or without destructive periodontal disease. *Arch Oral Biol* 1995;40:1151-1155.
48. Kennett CN, Cox SW, Eley BM. Investigations into the cellular contribution to host tissue proteases and inhibitors in gingival crevicular fluid. *J Clin Periodontol* 1997;24:424-431.
49. Kennett CN, Cox SW, Eley BM. Localisation of active and inactive elastase, alpha-1-proteinase inhibitor and alpha-2-macroglobulin in human gingiva. *J Dent Res* 1995;74:667-674.

단순 만성 치주염 환자 및 2형 당뇨병환자의 만성 치주염 치은조직에서 IL-6, elastase 및 α_1 -PI의 발현 양상 비교

박재완, 이재목*

경북대학교 치과대학 치주과학교실

본 실험에서는 제2형 당뇨병 환자와 비당뇨 환자들에서 만성 치주염 부위의 치은 및 건강한 치은에서 염증 매개체 중 하나인 IL-6, elastase 및 α_1 -PI의 발현에 대해 상호 비교 분석함으로써 염증, 혈당이 미치는 영향을 밝히고 제 2형 당뇨병 환자에서 심한 치주조직 파괴의 기전을 연구하고자 하였다.

경북대학교병원 치주과 내원환자 중 제2형 당뇨병 환자와 비당뇨 환자들 및 치주질환이 없는 건강한 대조군을 대상으로 여러 가지 환자요소, 임상 치주상태를 기록하고, 전신적으로 건강한 환자의 건강한 부위(n=8, Group 1), 전신적으로 건강한 환자의 만성 치주염 부위(n=8, Group 2), 제2형 당뇨병 환자의 만성 치주염 부위 (n=8, Group 3)에서 각각 변연치은을 채득하고 액화질소에 급속 동결하였다. Western blotting을 이용하여 각 조직 내 IL-6, elastase 및 α_1 -PI의 발현을 관찰, densitometer를 이용하여 상대적 발현을 정량, 각 조직의 β -actin을 이용하여 표준화하여 실험군과 대조군들의 평균치를 비교하여 다음과 같은 결과를 얻었다.

1. IL-6의 발현은 2군과 3군에서 증가되는 경향을 보였으며 3군에서 가장 높게 나타났다.
2. Elastase의 발현도 2군과 3군에서 증가양상을 보였으며 3군에서 가장 높게 나타났다.
3. α_1 -PI의 발현정도는 1군에 비해 3군에서 증가되는 경향을 보였다.
4. α_1 -PI/elastase 비율은 1군에 비해 2군과 3군에서 감소되었으며, 특히 3군에서 가장 감소되었다.
5. 3군에서 IL-6 발현이 증가됨에 따라 Elastase 발현이 증가되는 경향을 보였으나, IL-6와 Elastase 수치가 증가함에도 불구하고 α_1 -PI 수치는 1군에 비해 약간 증가되는 경향을 보였다.

결론적으로 IL-6 와 elastase는 만성 치주염과 제2형 당뇨병 환자의 만성 치주염 부위에서 염증상태에 따른 지표로 응용할 수 있으리라 생각되며, α_1 -PI/elastase 비율 또한 2형 당뇨병환자의 만성치주염 부위에서 중요한 측정인자가 될 수 있으리라 생각된다.

Key words: inflammation, inflammatory mediator, chronic periodontitis, diabetes mellitus