

Distribution of ion channels in trigeminal ganglion neuron of rat

Ae-Kyung Kim, Kyoung-kyu Choi, Ho-Young Choi

Department of Conservative Dentistry, College of Dentistry, Kyung Hee University

국문초록

흰쥐 삼차신경절 뉴런의 이온통로의 분포에 관한 연구

김애경 · 최경규 · 최호영

경희대학교 치과대학 보존학교실

삼차신경은 구강악안면영역의 운동 및 감각을 담당하고 있으므로 치과임상에서 매우 중요하다. 삼차신경근 중 삼차신경절에 세포체를 갖는 뉴런은 주로 체성 감각을 전달하는 1차 구심신경으로 악안면영역의 촉각, 압각, 진동감각 온도각 및 통각을 담당한다. 이러한 감각의 전달은 기본적으로 신경세포의 이온통로의 활동에 의존하는데 삼차신경절 세포에 여러 종류의 이온통로가 존재하는 것으로 알려져 있다. 본 연구에서는 항체 염색법을 이용하여 이온통로가 존재를 확인하고자 한다. 흰쥐의 삼차신경절로부터 통법에 따라 뉴런을 단일 세포로 분리하고 immunocytochemistry 방법으로 세포를 염색하여 관찰한 바 다음과 같은 결과를 얻었다.

본 실험에서 이온전류의 측정 등으로 관찰된 여러 종류의 이온통로들을 면역 염색법으로 확인하였다. 흰쥐의 삼차신경절 뉴런에서 확인된 이온통로는 소듐통로와 N, P 및 Q-type의 칼슘통로 그리고 BK_{Ca}, Kv 4.2 및 Kir 2.1 등의 포타슘통로이었으며 이온통로의 종류에 따라 분포에 차이를 나타내었다.

주요어 : Immunocytochemistry, 삼차신경절 뉴런, 소듐통로, 칼슘통로, 포타슘통로,

I . INTRODUCTION

Dorsal root ganglia (DRG) neurons transmit various sensory information such as touch, pressure, pain and temperature from the peripheral region to the central nervous system. Similarly, a pair of trigeminal root ganglia (TRG) is responsible for the sensory inputs from the oromaxillofacial region to which the trigeminal nerve is innervated.

The sensory neurons of mammalian DRG are known to express voltage-dependent ion channels: at least two types of sodium currents (I_{Na}) which are distinguished by their sensitivity to TTX (Bossu and Feltz 1984; Caffrey et al. 1992; Elliott and Elliott 1993; Fedulova et al. 1991; Kostyuk et al. 1981, McLean et al. 1988; Ogata and Tatebayashi 1993; Ogata and Tatebayashi

1992 a, b; Roy and Narahashi 1992; Schwartz et al. 1990). In addition, the distribution of these ion channels in DRG neurons, according to the size of cells and developmental stages, has been widely studied to elucidate the developmental and functional role of the each type of ion channels in the modulation of specific sensory modalities (Roy and Narahashi 1992; Schwartz et al. 1990).

Voltage-activated calcium channels have been implicated in a number of important neuronal functions, including secretion of neurotransmitters and hormones (Perney et al. 1986; Hirning et al. 1988; Holz et al. 1988), generation of epileptiform discharges (Wong and Prince 1978) and activation of intracellular enzymes (Nishizuka 1984). Ca²⁺ influx through voltage-activated calcium channels might also contribute to neurodegeneration associated with ischaemia (Choi 1988). For

these reasons, considerable attention has been given to defining the criteria for separating different types of Ca^{2+} channel and for attributing specific functions to the different channels. Although there is general agreement about some properties of Ca^{2+} channels, it has become clear that more detail information is needed due to an apparent wide diversity in different cell types. In particular, there is little quantitative information on the pharmacological sensitivity of the channel blockers may be useful for distinguishing channel types that are not easily separated on the basis of kinetic properties and may, therefore, be useful in studying the relative contributions of each channel type to specific functions.

All excitable cells express voltage-gated K^+ (Kv) channels. These channels are critical for a wide variety of process, including action potential preparation and lymphocyte activation, and play an essential role in neurons where they regulate the resting membrane potential, impact dendritic excitability, control the frequency and duration of action potentials, and modulate neurotransmitter release (Hille 1992).

Several types of inwardly rectifying K^+ (Kir) channels have been electrophysiologically identified in retinal Moeller cells (Brew et al. 1986; Ishii et al 1997; Kusaka and Puro 1997; Newman 1993), oligodendrocytes (McLarnon and Kim 1989), glioma cells (Brismar and Collins 1989).

Ca^{2+} -activated K^+ channels are present in a remarkable variety of animal cells, where they integrate changes in intracellular Ca^{2+} concentration with changes in membrane potential. They are involved in many physiological processes including regulation of secretion, smooth muscle tone, and control of action potential shape and firing pattern in excitable cells (Marty 1989; Vergara et al. 1998).

The main goals of this study were (1) to observe some kinds of ion channels (2) to observe the localized distribution of the ion channels in the trigeminal root ganglion neurons that are responsible for the generation and transmission of sensory impulses from oromaxillofacial region to the central nervous system.

II. MATERIALS & METHODS

1. Preparation of rat TRG neurons

Rat TRG neurons were prepared by the method described by Liu and Simon (1996) as follows: after the decapitation of the ketamine-anesthetized (100~125mg/kg, I. M.) adult Sprague-Dawley rat (100~150g), a pair of trigeminal root ganglia were dissected and washed several times in cold (4°C) modified Hanks' balanced salt solution (HBSS) containing 130 NaCl, 5 KCl, 0.3 KH_2PO_4 , 4 NaHCO_3 , 0.3 Na_2HPO_4 , 5.6 D-glucose and 10 N-2-hydroxyethylpiperazine-N'-2-ethanesulfonic acid (HEPES) (in mM, pH 7.3). They were incubated for 40minutes at 37°C in HBSS containing 1 mg/ml of type XI collagenase, triturated with flamed Pasteur pipettes, and finally incubated at 37°C for 6min with 1mg/ml of type IV DNase I. Then they were re triturated and washed/centrifuged three times in Dulbecco's modified Eagle medium (DMEM), and maintained in room temperature.

2. Immunocytochemistry

Isolated trigeminal ganglion neurons were washed complete saline solution, twice, 1min each. The cells were fixed for 10min 4% paraformaldehyde in 0.1M PBS. after three times washing for 10min in 0.1M PBS, the cells incubated for 15min in PBS containing 20% normal goat serum, 1% bovine serum albumin, and 0.1% Triton X-100. Polyclonal anti-Kv 4.2, BK_{Ca} , Kir 2.1 $\alpha 1\text{A}$, $\alpha 1\text{B}$, αE (product no. APC-023, 021, 026 and ACC-001, 002, 006 ; Alomone Labs, Jerusalem, Israel) were used as primary antibodies at a dilution of 1:100 for 24 h at 4°C. The cells were washed for 5 min six times. And then the cells were incubated for 1h at room temperature in PBS containing anti-rabbit fluorescein-labeled IgG (dilution of 1: 100, KPL Europe). After three 10-min washes in PBS and examined with epifluorescence microscopy.

III. RESULTS

1. Sodium Channels

Soma isolated from the trigeminal ganglion were moderately stained with the antibody for the sodium channels. The primary antibodies used in this experiment are able to bind to TTX-s and TTX-r sodium channels. Therefore TTX-s and TTX-r sodium channels on the membrane of TRG neurons could not be separated from each other. Fig. 1 shows TRG neurons observed under fluorescence microscope and Fig. 2 is the micrograph observed in the same field with Fig. 1.

2. Calcium Channels

N-type and P/Q-type calcium channels on the TRG neurons were observed under fluorescence microscope (Figs. 3, 5, 7, and 9). Fig. 3 and Fig. 4 show moderately stained trigeminal neurons that treated with N-type calcium channel antibodies, and a light micrograph with the same field. In the magnification of X400 (Fig. 5), only some TRG neurons were stained. This means that N-type calcium channel would not be expressed in all TRG neurons. And intensity of staining was varied from low to high. With the result of this experiment, the relationship of the cell size and the intensity of staining could not be confirmed. Fig. 7 and 9 show P/Q-type calcium channels of the TRG neurons, and distribution of the calcium channels was not uniform but varied in all neurons. This finding could also be found in figure 3 and 5. In this immunocytochemical study we could observe N-type and P/Q-type calcium channels on the TRG neurons

3. Potassium Channels

Inwardly rectifying potassium channels (Kir 2.1), voltage-gated potassium channels (Kv 4.2) and calcium-activated potassium channels (BK_{Ca}) on the TRG neurons were observed under fluorescence and light microscopes (Figs. 11~22). All the three types of potassium channels were

stained with corresponding antibodies. Therefore they exist in TRG neurons of rat. The intensity of staining and the distribution of the channels were similar to those in the case of the calcium channels

IV. DISCUSSION

Trigeminal sensory nerves relay mechanical, thermal, chemical and proprioceptive information from craniofacial regions. Trigeminal sensory nerves act at the local level to maintain the integrity of craniofacial tissues through trophic influences and serve the whole animal through reflexes that protect other external sensory (e.g. retina, olfactory epithelium, taste receptors) and internal homeostatic (e.g. respiratory and digestive tracts) systems from damaging environmental changes.

The voltage-gated Na⁺ channels are responsible for the increase in sodium permeability during the initial rapidly rising phase of the action potential in nerve, neuroendocrine, skeletal muscle, and heart muscle cells. Like most cells, these electrically excitable cells maintain a high intracellular K⁺ concentration and a low intracellular Na⁺ concentration relative to the extracellular fluid through the energy-dependent pumping of these cations by the Na⁺-K⁺-ATPase. Excitable cells also maintain a resting membrane potential, inside negative, because their surface membranes are specifically permeable to K⁺. Electrically excitable cells are distinguished, however, by having voltage-sensitive ion channels in their surface membranes that respond to membrane potential changes with large regenerative increases in permeabilities to specific ions on a time scale of milliseconds. Changes in ionic permeability are correctly measured only if the membrane potential of the cell is controlled experimentally (Hodgkin and Huxley 1952). The voltage-sensitive Na⁺ channel, whose opening causes the upstroke of the nerve action potential, is blocked in practically all neurons by low concentrations of TTX. Na⁺ channels in nociceptive neurons have long been known to be an exception as they are TTX-resis-

tant, a property they share with Na^+ channels in cardiac muscle (Elliot and Elliot 1993; Cohen and Barchi 1993). A TTX-resistant Na^+ channel has recently been isolated by difference cloning of mRNA from the dorsal root ganglion (DRG) (Akopian et al. 1996).

Classification of primary afferent neurons of the mammalian DRG is based on the morphological and electrophysiological characteristics of neurons (Harper and Lawson 1985a, b). The cell size is known to be correlated with the axonal conduction velocity very well: large neurons with myelinated $A\alpha$, β fibers are fast conducting, while small cells with myelinated $A\delta$ and unmyelinated C fibers are slow conducting (Harper and Lawson 1985a). But properties of the somatic action potentials are thought to be associated with the cell types at lesser extent: long action potential with inflected repolarization which is mainly recorded from the $A\beta$ and C cells, and short action potential without plateau during the falling phase recorded in $A\alpha$ and $A\delta$ cells (Harper and Lawson 1985b). Patch clamp techniques have been used to investigate the range and properties of ionic channels underlying these electrical activity in dissociated mammalian DRG neurons, and two types of I_{Na} have been characterized: in general, TTX-s I_{Na} are found in large-diameter cells, and TTX-r I_{Na} are expressed in small-diameter cells (Caffrey et al. 1992; Elliott and Elliott 1993; Kostyuk et al. 1981; McLean 1988; Ogata and Tatebayashi 1992a; Puil et al. 1986; Schwartz et al. 1990). Though it is generally accepted that TTX-r I_{Na} is found in the soma of small DRG neurons that give rise, primarily, to C-type afferent fibers, the frequency of recording TTX-r I_{Na} in small neurons is in disagreement among studies from the same type of cell. For example, Caffrey et al. (1992) reported that TTX-r I_{Na} was always observed in conjunction with TTX-s I_{Na} in small DRG neurons from adult rats, where as Elliott and Elliott (1993) suggested that only 45% of small cells express TTX-r I_{Na} from the same preparation. In this experiment, neurons isolated from TRG were 16 to 40 μm in diameter. Because primary antibodies used in this experiment are

able to bind TTX-s Na^+ channels and TTX-r Na^+ channels, positive staining of this result shows the presence of both TTX-s Na^+ channels and TTX-r Na^+ channels in the TRG neurons. And this result shows that the degree of staining does not related with the size of the neuron. Calcium influx, which is mediated by the opening of voltage-dependent calcium channels, triggers a number of cellular processes, including muscle contraction, second-messenger activation cascade, regulation of axonal guidance, control of neurotransmitter release, and long-term changes in neuronal plasticity (Clapham 1995). Over the past few years, molecular cloning techniques combined with the use of specific toxins have allowed the identification of an unexpected variety of calcium channels, which have been classified into different groups, referred to as T, L, N, P, Q, and R, on the basis of their physiological and pharmacological properties (Tsien et al. 1988; Bean 1989; McCleskey 1994). In most cases, multiple calcium channel types coexist in the same neuron and it has been speculated that they may contribute toward different neuronal functions, possibly depending on their localization (Doughty et al. 1998; Wu et al. 1999).

Previous work on L-type and N-type calcium channels has demonstrated different localizations in specific areas of the neuronal surface. L-type channels have been found in the neuronal somata and proximal dendrites of rat brain, spinal cord, and retina (Westenbroek et al. 1990; Ahljianian et al. 1990), which is consistent with a role in mediating the increases in intracellular calcium occurring in the cell body in response to excitatory inputs to the dendrites. N-type channels have been detected at the release face of presynaptic nerve terminals at the frog neuromuscular junction (Robitaille et al. 1990; Cohen et al. 1991; Torri Tarelli et al. 1991), in the presynaptic calyx-type nerve terminals of chick ciliary ganglia, and in the medial nucleus of the trapezoid body in rat (Haydon et al. 1994; Wu et al. 1999). These data, together with a number of functional findings (Miller 1990; Dunlap et al. 1995; Tsien et al. 1995; Stanley 1997), clearly indicate that

N-type channels play a role in supporting neurotransmitter release. However, it is interesting to note that they have also been found on the somata, throughout the dendritic arbor, and on the dendritic spines of CA1 neurons in hippocampal brain slices, thus suggesting that they may also participate in the generation of calcium conductances in distal dendrites (Mills et al. 1994). In this experiment, N-type calcium channels of the somata of TRG neurons were moderately stained with the specific antibodies. Although N-type calcium channels have a role in supporting neurotransmitter release, this result is similar to data that N-type calcium channels have been found on the somata of hippocampal CA1 neurons.

After the initial description of P-type calcium channels in Purkinje cells (Llinas et al. 1989; Mintz et al. 1992) and the subsequent designation of the Q-type calcium channels as a separate channel category (Randall and Tsien 1995), concern has arisen regarding the distinction between them. P/Q-type calcium channels are widely expressed in the mammalian brain in a predominantly presynaptic distribution (Westenbroek et al. 1995), and have a important role in modulating neurotransmitter release (Regehr and Mintz 1994). In this immunocytochemical study, P/Q-type calcium channels were widely stained on the membranes of the TRG neurons. This means that P/Q-type calcium channels exist not only in the central nervous system but also in the peripheral afferent nerves, and they may be concerned with the signal transmission in the primary sensory afferent of the trigeminal nerves.

Inwardly rectifying potassium channels (Kir) control the resting K^+ conductance in many excitable and non-excitable cells (Hille 1992). They mediate a high K^+ conductance at the K^+ reversal potential and at voltages slightly positive to the K^+ reversal potential. Thus Kir have a stabilizing effect on the resting potential. Whenever Kir are regulated by second messengers, this represents a highly effective mechanism of controlling excitability (Nilius et al. 1993). Various subtypes of the Kir family have been cloned and heterologously expressed in order to study their functional

properties. One of the Kir, Kir 2.1 is widely distributed in various tissues. Kir 2.1 is found in mammalian lens epithelial cells (Cooper et al. 1991), ventricular myocytes (Josephson 1998), endothelial cells (Silver and DeCoursey 1990), and oocytes (Ruppersberg and Fakler 1996). In this experiment, we could also find the Kir 2.1 on the membrane of the TRG neurons. As we expected Kir 2.1 was expressed moderately, however its distribution was not so uniform.

Much interest has been generated recently in the potassium channel subunit Kv 4.2 for its critical role in regulating membrane excitability. Several lines of evidence suggest that Kv 4.2 underlies the A-type current (IA) in neurons (Serodio et al. 1996; Song et al. 1998) as well as the transient outward current (Ito) in cardiac ventricular myocytes (Barry et al. 1998). In particular, Tkatch, et al. (2000) have found that Kv 4.2 mRNA abundance and A-type current amplitude are linearly related in the striatum. In the hippocampus, such A-type current has been found to dampen back-propagation of action potentials in the distal dendrites of CA1 pyramidal neurons, thereby setting up the capacity to modify the excitatory postsynaptic potential or back-propagating action potentials following synaptic activity (Hoffman et al. 1997). Immunohistochemical studies show that Kv 4.2 protein localizes abundantly to the hippocampus (Sheng et al. 1992) with particular localization to the neuronal soma and dendrites (Maletic-Savatic et al. 1995), structures in which modulating membrane excitability could have important implications for long-term potentiation and memory. Furthermore, ultrastructural studies in supraoptic neurons have shown that Kv 4.2 is localized to the postsynaptic membrane directly across from the presynaptic terminal (Alonso and Widmer 1997). There is little study on the distribution of Kv 4.2 in primary sensory neurons. This study is the first one about the localization of Kv 4.2 in TRG neurons. Kv 4.2 was expressed moderately on the membrane of the TRG, however, the intensity of staining does not show an uniform pattern in each neuron. Although this result means that some of the TRG

neurons do not have or have some of Kv 4.2, the reason and the physiological implication of the result were not fully understood.

Ca^{2+} -activated K^+ channels (KCa) are present in a remarkable variety of animal cells, where they integrate changes in intracellular Ca^{2+} concentration with changes in membrane potential. They are involved in many physiologic processes including regulation of secretion, smooth muscle tone, and control of action potential shape and firing pattern in excitable cells (Marty 1989; Vergara et al. 1998). KCa can be divided into three main subfamilies based on their electrophysiological, pharmacological, and molecular profiles: large-conductance Ca^{2+} -activated K^+ channels, intermediate-conductance Ca^{2+} -activated K^+ channels, and small-conductance Ca^{2+} -activated K^+ channels (Vergara et al. 1998). Large-conductance Ca^{2+} -activated K^+ channels (BKCa) are found in a variety of both electrically excitable and non-excitable cells (Jan and Jan 1997). Their activities are triggered by membrane depolarization and enhanced by cytosolic Ca^{2+} , providing a link between the metabolic and electrical state of cells. The physiological roles of BKCa channels have been examined in several tissues. In smooth muscle in which they are particularly abundant, BKCa channels play a key role in setting the pace of contractile activity (Nelson et al. 1995), and in neurons, they are involved in regulation of transmitter release and repolarization of action potentials (Kaczorowski et al. 1996). In this experiment BKCa channels were expressed in TRG neurons. Because the BKCa channels regulate the neurotransmitters and are activated after depolarization, they may involve the release of the neurotransmitters in trigeminal nerve. The TRG neurons were moderately stained with the specific antibodies for the BKCa channels.

In this immunocytochemical study, thus, we could observe (1) the sodium channels which can be divided into TTX-s and TTX-r sodium channels, (2) the calcium channels: N-type and P/Q-type, and (3) the potassium channels: inwardly rectifying potassium (Kir 2.1) channels, voltage-gated potassium (Kv 4.2) channels, and large-

conductance calcium-activated potassium (BKCa) channels in TRG neurons.

V. CONCLUSION

Dorsal root ganglia (DRG) neurons transmit various sensory information such as touch, pressure, pain and temperature from the peripheral region to the central nervous system. Similarly, a pair of trigeminal root ganglia (TRG) is responsible for the sensory inputs from the oromaxillofacial region to which the trigeminal nerve is innervated. Ionic channels in neuronal membranes have a fundamental role in the transmission of various sensory impulses. Particularly, sodium channels are important to generation of action potentials and classified into TTX-r and TTX-s sodium channels.

Calcium influx, which is mediated by the opening of voltage-dependent calcium channels, triggers a number of cellular processes, including muscle contraction, second-messenger activation cascade, regulation of axonal guidance, control of neurotransmitter release, and long-term changes in neuronal plasticity.

There are many sets of potassium channels with different subunits. Therefore potassium channels can be divided into several categories. Generally potassium channels are involved in repolarization after depolarization, setting the pace of contractile activity, regulation of neurotransmitter release, and modulating membrane excitability.

The main goals of this study were (1) to observe some kinds of ion channels (2) to observe the localized distribution of the ion channels in the trigeminal root ganglion neurons that are responsible for the generation and transmission of sensory impulses from oromaxillofacial region to the central nervous system.

In this immunocytochemical study.

- (1) We observed the sodium channels which can be divided into TTX-s and TTX-r sodium channels in TRG neurons.
- (2) We observed the calcium channels: N-type and P/Q-type in TRG neurons.
- (3) We observed the potassium channels:

inwardly rectifying potassium (Kir 2.1) channels, voltage-gated potassium (Kv 4.2) channels, and large-conductance calcium-activated potassium (BKCa) channels in TRG neurons.

REFERENCES

- Ahljianian, M. K., Westenbroek, R. E., AND Catterall, W. A. Subunit structure and localization of dihydropyridine-sensitive calcium channels in mammalian brain, spinal cord, and retina. *Neuron*, 4 : 819-832, 1990.
- Akopian A. N., Sivilotti L., and Wood J. N. A tetrodotoxin-resistant voltage-gated sodium channel expressed by sensory neurons. *Nature* 379: 257-262, 1996.
- Alonso, G., AND Widmer, H., Clustering of Kv4.2 potassium channels in Phostys
- Barry, D. M., Xu, H., Schuessler, R. B., AND Nerbonne, J. M. Functional knockout of the transient outward current, long-QT syndrome, and cardiac remodeling in mice expressing a dominant-negative Kv4 alpha subunit. *Circ Res.* 83: 560-567, 1998.
- Bean, B. P. Classes of calcium channels in vertebrate cells. *Annu Rev. Physiol.* 51 : 367-384, 1989.
- Bignami A. Neuron-Glia Interrelations During Phylogeny. I. Phylogeny and Ontogeny of Glial Cells. *New Jersey : Humana*, 3-39, 1995.
- Bossu J. -L. and Feltz A. Patch-clamp study of the tetrodotoxin-resistant sodium current in group C sensory neurones. *Neurosci. Lett.* 51: 241-246, 1984.
- Brew H, Gray PT, Mobbs P, AND Attwell D. Endfeet of retinal glial cells have higher densities of ion channels that mediate K⁺ buffering. *Nature* 324 : 466-468, 1986.
- Brismar T AND Collins VP. Inward rectifying potassium channels in human malignant glioma cells. *Brain Res*, 480: 249-258, 1989.
- Caffrey J. M., Eng D. L., Black J. A., Waxman S. G., and Kocsis J. D. Three types of sodium channels in adult rat dorsal root ganglion neurons. *Brain Res.* 592: 283-297, 1992.
- Choi D. W. Calcium-mediated neurotoxicity : relationship to specific channel types and role in ischemic damage. *Trends in Neurosciences* 11: 465-469, 1988.
- Clapham, D. E. Calcium signaling. *Cell*, 259 : 268, 1995.
- Cohen S. A. and Barchi R. L. Voltage-dependent sodium channels. *Int. Rev. Cytol.* 137: 55-103, 1993.
- Cohen, M. W., Jones, O. T., AND Angelides, K. J. Distribution of Ca²⁺ channels on frog motor nerve terminals revealed by fluorescent ω -conotoxin. *J. Neurosci.* 11: 1032-1039, 1991. Cooper, K., Rae, J. L., AND Dewey, J. Inwardly rectifying potassium current in mammalian lens epithelial cells. *Am J Physiol.* 261 : C115-23.
- Doughty, J. M., Barnes-Davies, M., Rusznak, Z., Harasztosi, C., AND Forsythe, I. D. Constructing Ca²⁺ channel subtypes at cell bodies and synaptic terminals of rat anterioventral cochlear bushy neurons. *J. Physiol.* 512 : 365-376, 1998. Dunlap, K., Luebke, J. I., AND Turner, T. J. Exocytotic Ca²⁺ channels in mammalian central neurons. *Trends Neurosci.* 18 : 89-98, 1995.
- Elliott A. A. and Elliott J. R. Characterization of TTX-sensitive and TTX-resistant sodium currents in small cells from adult rat dorsal root ganglia. *J. Physiol. (London)* 463: 39-56, 1993.
- Fedulova S. A., Kostyuk P. G., and Veselovsky N. S. Ionic mechanisms of electrical excitability in rat sensory neurons during postnatal ontogenesis. *Neuroscience* 41: 303-309, 1991.
- Harper, A. A. and Lawson, S. N. Conduction velocity is related to morphological cell type in rat dorsal root ganglion neurones. *J. Physiol. (London)* 359: 31-46, 1985a.
- Harper, A. A. and Lawson, S. N. Electrical properties of rat dorsal root ganglion neurons with different peripheral nerve conduction velocities. *J. Physiol. (London)* 359: 47-63, 1985b.
- Haydon, P. G., Henderson, E., AND Stanley, E. Localization of individual calcium channels at the release face of a presynaptic nerve terminal. *Neuron*, 13 : 1275-1280.
- Hille. B. Ionic channels of Excitable Membranes. *Sinauer, Sunderland, MA.* 1992.
- Hirning L. D., Fox A. P., McCleskey E. W., Olivera B. M., Thayer, S. A., Miller R. J. and Tsien R. W. Dominant role of N-type Ca²⁺ channels in evoked release of norepinephrine from sympathetic neurons. *Science* 239: 57-61, 1988.
- Hodgkin, A. L., AND A. F. Huxley. Currents carried by sodium and potassium ions through the membrane of the giant axon of Loligo. *J. Physiol. Lond.* 116 : 449-472, 1952.
- Hoffman, D. A., Magee, J. C., Colbert, C. M., AND Johnston, D. K⁺ channel regulation of signal propagation in dendrites of hippocampal pyramidal neurons. *Nature*, 387 : 869-875, 1997.
- Holz G. G., Dunlap K. and Kream R. M. Characterization of the electrically evoked release of substance P from dorsal root ganglion neurons : methods and dihydropyridine sensitivity. *Journal of Neuroscience* 8: 463-471, 1988.
- Ishii M, Horio, Y., Tada, Y., Hibino, H., Inanobe, A., Ito, M., Yamada, M., Gotow, T., Uchiyama, Y., AND Kurachi Y. Expression and clustered distribution of an inwardly rectifying potassium channel, KAB-2/Kir4.1, on mammalian retinal Muller cell membrane : the regulation by insulin and laminin signals. *J Neurosci* 17 : 7725-7735, 1997.
- Jan, L. Y. AND Jan, Y. N. Cloned potassium channels from eukaryotes and prokaryotes. *Annu Rev Neurosci.* 20 : 91-123, 1997.
- Josephson, I. R. Properties of inwardly rectifying K⁺ channels in ventricular myocytes. *Mol Cell Biochem.* 80 : 21-26, 1988.
- Kaczorowski, G. J., Knaus, H. G., Leonard, R. J., Mcmanus, O. B. AND Garcia, M. L. High-conductance calcium-activated potassium channels : structure, pharmacology, and function. *J Bioenerg Biomembr.* 28 : 255-267, 1996.
- KOSTYUK P. G., VESELOVSKY N. S., FEDULOVA S. A., AND TSYNDRENKO A. Y. Ionic currents in the somatic membrane of rat dorsal root ganglion neurons - I. Sodium currents. *Neuroscience* 6: 2423-2430,

- 1981.
31. Kusaks, S., AND Puro, D. G. Intracellular AYP activates inwardly rectifying K^+ channels in human and monkey retinal Muller (glial) cells. *J Physiol (Lond)* 500 : 593-604, 1997.
32. Llinas, R. ET AL. Blocking and isolation of a calcium channel from neurons in mammals and cephalopods utilizing a toxin fraction (FIX) from the funnel web spider poison. *Proc Natl Acad Sci. USA.* 86 : 1689-1693, 1989.
33. Maletic-Savatic, M., Lenn, N. J., AND TRIMMER, J. S. Differential spatiotemporal expression of K^+ channel polypeptides in rat hippocampal neurons developing in situ and in vitro. *J Neurosci.* 15 : 3840-3851
34. Marty, A. The physiological role of calcium- dependent channels. *Trends Neurosci.* 12 : 420-424, 1989.
35. McCleskey, E. W. Calcium channels : Cellular roles and molecular mechanisms. *Curr Opin Neurobiol.* 4 : 304-312, 1994.
36. McLarnon J.G. AND Kim S.U. Existence of inward potassium currents in adult human oligodendrocytes. *Neurosci Lett* 101 : 107-112, 1989.
37. McLean M. J., Bennet P. B., and Thomas R. M. Subtypes of dorsal root ganglion neurons based on different inward currents as measured by whole cell voltage clamp. *Molec. Cell. Biochem.* 80: 94-107, 1988.
38. Miller, R. J. Receptor-mediated regulation of calcium channels and neurotransmitter release. *FASEB J.* 4 : 3291-3299, 1990.
39. Mills, L. R., Niesen, C. E., So, A. P., Carlen, P. L., Spigelman, I. , AND Jones, O. T. N-type Ca^{2+} channels are located on somata, dendrites and a subpopulation of dendritic spines on live hippocampal pyramidal neurons. *J. Neurosci.* 14 : 6815-6824, 1994.
40. Mintz, I. ET AL. P type calcium channels in rat central and peripheral neurons. *Neuron.* 9 : 85-95, 1992.
41. Nelson, M. T., Cheng, H., Rubart, M., Santana, L. F., Bonev, A. D., Knot, H. J. AND Lederer, W. J. Relaxation of arterial smooth muscle by calcium sparks. *Science*, 270 : 633-637, 1995.
42. Newman E.A. Inward-rectifying potassium channels in retinal glial (Muller) cells. *J Neurosci* 13 : 3333-3345, 1993.
43. Nilius B., Schwarz, G., AND Droogmans, G. Modulation by histamine of an inwardly rectifying potassium channel in huma endothelial cells. *J Physiol.* 472 : 359-371, 1993.
44. Nishizuka Y. The role of protein kinase C in cell surface signal transduction and tumour promotion. *Nature* 308: 693-698, 1984.
45. Ogata N. and Tatebayashi H. Kinetic analysis of two types of Na^+ channels in rat dorsal root ganglia. *J Physiol. (London)* 466: 9-37, 1993.
46. Ogata N. and Tatebayashi H. Ontogenic development of the TTX-sensitive and TTX-insensitive Na^+ channels in neurons of the rat dorsal root ganglia. *Dev. Brain Res.* 65: 93-100, 1992a.
47. Ogata N. and Tatebayashi H. Slow inactivation of tetrodotoxin-insensitive Na^+ channels in neurons of rat dorsal root ganglia. *J. Membr. Biol.* 129: 71-80, 1992b.
48. Perney T. M., Hirning L. D., Leeman S. E. and Miller R. J. Multiple calcium channels mediate neurotransmitter release from peripheral neurons. *Proceedings of the National Academy of Sciences of the USA* 83: 6656-6659, 1986.
49. Puil E., Gimbarzevsky B., and Miura R.M. Quantification of membrane properties of trigeminal root ganglion neurons in guinea pigs. *J. Neurophysiol.* 55: 995-1016, 1986.
50. Randall, A. AND Tsien, R. Pharmacological dissection of multiple types of calcium channel currents in rat cerebellar granule neurons. *J Neurosci.* 15(4) : 2995-3012, 1992.
51. Regehr, W. G., Mintz, I. M. Participation of multiple calcium channel types in transmission at single climbing fiber to Purkinje cell synapses. *Neuron*, 12 : 605-613
52. Robitaille, R., Adler, E. M., AND Charlton, M. P. Strategic location of calcium channels at transmitter release sites of frog neuromuscular synapses. *Neuron.* 5 : 773-779, 1990.
53. Roy M. L. and Narahashi T. Differential properties of tetrodotoxin-sensitive and tetrodotoxin-resistant sodium channels in rat dorsal root ganglion neurons. *J Neurosci.* 12: 2104-2111, 1992.
54. Schwartz A., Palti Y., and Meiri H. Structural and developmental differences between three types of Na channels in dorsal root ganglion cells of newborn rats. *J. Membr. Biol.* 116: 117-128, 1990.
55. Serodio, P., Vega-Saenz De Miera, E., AND Rudy, B. Cloning of a novel component of A-type K^+ channels operating at subthreshold potentials with unique expression in heart and brain. *J Neurophysiol.* 75 : 2174-2179.
56. SHENG, M., TSAUR, M. I., JAN, Y. N., AND L. Y. Subcellular segregation of two A-type K^+ channel proteins in rat central neurons. *Neuron*, 2 : 271-284, 1992.
57. SILVER, M. R. AND DECOURSEY, T. E. Intrinsic gating of inward rectifier in bovine pulmonary artery endothelial cells in the presence or absence of internal Mg^{2+} . *J Gen Physiol.* 96 : 109-133, 1990.
58. SONG, W. J., TKATCH, T., BARANAUSKAS, G., ICHINOHE, N., KITAI, S. T., AND SURMEIER, D. J. Somatodendritic depolarization- activated potassium currents in rat neostriatal cholinergic interneurons are predominantly of the A type and attributable to coexpression of Kv4.2 and Kv 4.1 subunits. *J Neurosci.* 18 : 3124-3137, 1998.
59. STANLEY, E. F. The calcium channel and the organization of the presynaptic transmitter release face. *Trends Neurosci.* 20 : 404-409, 1997.
60. TKATCH, T., BARANAUSKAS, G., AND SURMEIER, D. J. Kv4.2 mRNA abundance and A-type $K(+)$ current amplitude are linearly related in basal ganglia and basal forebrain neurons. *J Neurosci.* 20 : 579-588, 2000.
61. TORRI-TARELLI, F., PASSAFARO, M., CLEMENTI, F., AND SHER, M. Presynaptic localization of omega-conotoxin-sensitive calcium channels at the frog neuromuscular junction. *Brain Res.* 547 : 331-334, 1991.
62. TSIEN, R. W., LIPSCOMBE, D., MANDISON, D. V., BLEY, K. AND FOX, A. Reflections on Ca^{2+} channel diversity, 1984-1994. *Trends Neurosci.* 18 : 52-54, 1995.
63. TSIEN, R. W., LIPSCOMBE, D., MANDISON, D. V., BLEY, K., AND FOX, A. Multiple types of neuronal calcium channels and their selective modulation. *Trends Neurosci.* 11 : 431-438, 1988.

64. VERGARA, C., LATORRE, R., MARRION, N. V., AND ADELMAN, J. P. Calcium-activated potassium channels. *Curr Opin Neurobiol.* 8 : 321-329, 1998.
65. WESTENBROEK, R. E., AHLIJANIAN, M. K., AND CATTERALL, W. A. Clustering of L-type Ca^{2+} channels at the base of major dendrites in hippocampal pyramidal neurons. *Nature*, 347 : 281-284, 1990.
66. WESTENBROEK, R. E., SAKURAI, T., ELLIOT, E. M., ET AL. Immunochemical identification and subcellular distribution of the alpha 1A subunits of brain calcium channels. *J Neurosci*, 15 : 6403-6418, 1995.
67. Wong R. K. S. and Prince D. A. Participation of calcium channels in the generation of action potentials in rat hippocampal pyramidal neurons. *Neurosci Lett*, 100 : 1-4, 1989.

- um spikes during intrinsic burst firing in hippocampal neurons. *Brain Research* 159: 385-390, 1978.
68. WU, L. G., WESTENBROEK, R. E., BORST, J. G. G., CATTERAL, W. A., AND SAKMANN, B. Calcium channel types with distinct presynaptic localization couple differentially to transmitter release in single calyx-type synapses. *J Neurosci.* 19 : 726-736, 1999.

EXPLANATIONS OF FIGURES

- Fig. 1. Fluorescent microscopic image of sodium channels.
- Fig. 2. Microscopic image of sodium channels.
- Fig. 3. Fluorescent microscopic image of N-type calcium channels. (X100)
- Fig. 4. Microscopic image of N-type calcium channel. (X100)
- Fig. 5. Fluorescent microscopic image of N-type calcium channels. (X400)
- Fig. 6. Microscopic image of N-type calcium channels. (X400)
- Fig. 7. Fluorescent microscopic image of P/Q type calcium channels.(X100)
- Fig. 8. Microscopic image of P/Q type calcium channels.(X100)
- Fig. 9. Fluorescent microscopic image of P/Q type calcium channels.(X400)
- Fig. 10. Microscopic image of P/Q type calcium channels. (X 400)
- Fig. 11. Fluorescent microscopic image of Kir 2.1 potassium channels. (X100)
- Fig. 12. Microscopic image of Kir 2.1 potassium channels. (X 100)
- Fig. 13. Fluorescent microscopic image of Kir 2.1 potassium channels. (X 400)
- Fig. 14. Microscopic image of Kir 2.1 potassium channels. (X 400)
- Fig. 15. Fluorescent microscopic image of Kv 4.2 potassium channels. (X 100)
- Fig. 16. Microscopic image of Kv 4.2 potassium channels. (X 100)
- Fig. 17. Fluorescent microscopic image of Kv 4.2 potassium channels. (X 400)
- Fig. 18. Microscopic image of Kv 4.2 potassium channels. (X 400)
- Fig. 19. Fluorescent microscopic image of BK_{Ca} potassium channels. (X 100)
- Fig. 20. Microscopic image of BK_{Ca} potassium channels. (X 100)
- Fig. 21. Fluorescent microscopic image of BK_{Ca} potassium channels. (X 400)
- Fig. 22. Microscopic image of BK_{Ca} potassium channels. (X 400)

Figures ①

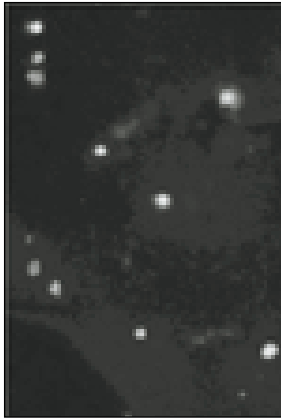


Fig. 1

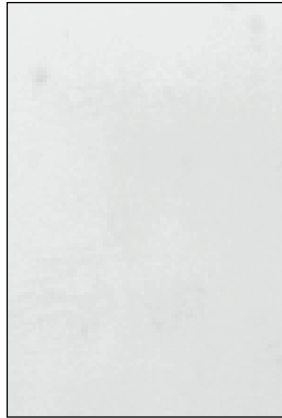


Fig. 2

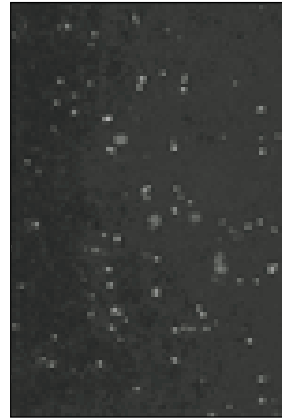


Fig. 3

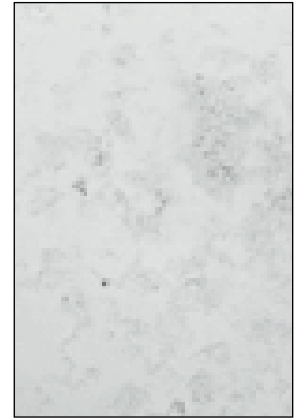


Fig. 4

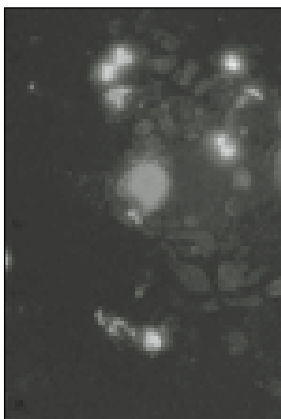


Fig. 5

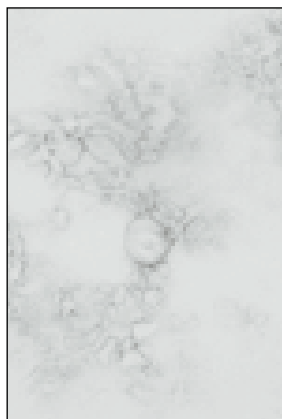


Fig. 6



Fig. 7

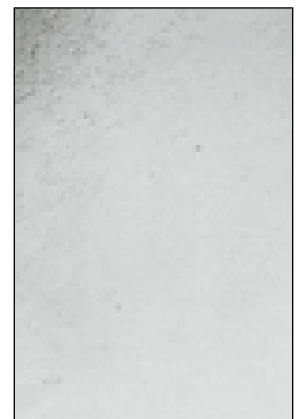


Fig. 8

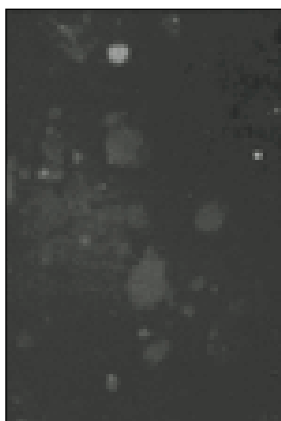


Fig. 9



Fig. 10

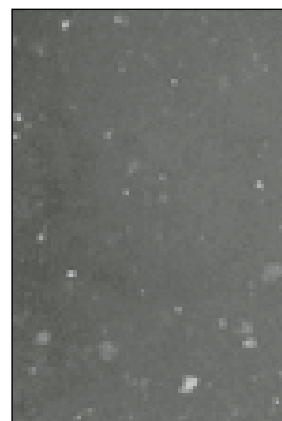


Fig. 11

Figures ②

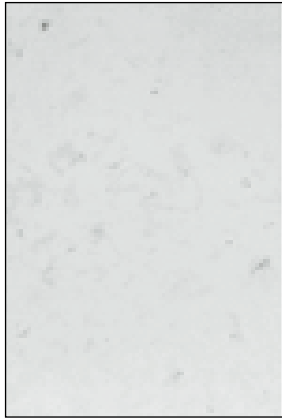


Fig. 12

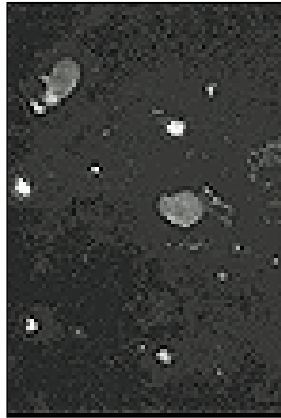


Fig. 13



Fig. 14

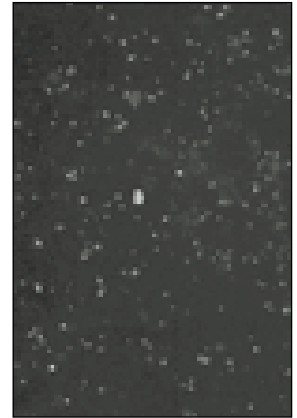


Fig. 15



Fig. 16

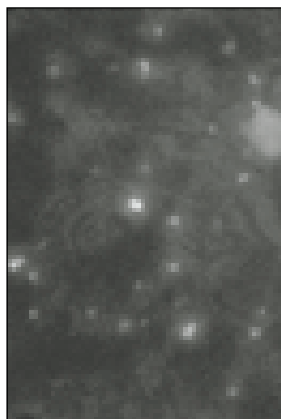


Fig. 17



Fig. 18

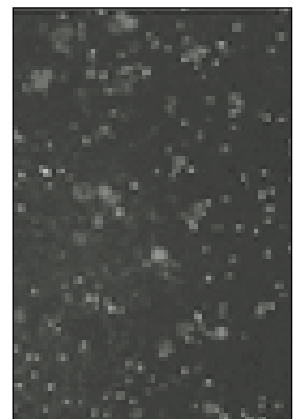


Fig. 19



Fig. 20

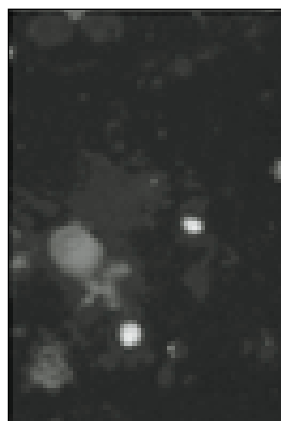


Fig. 21

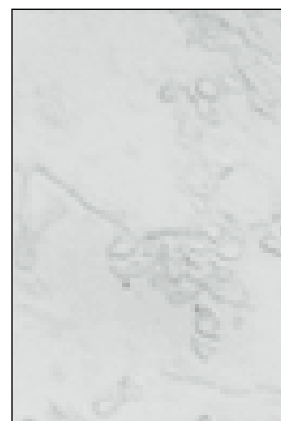


Fig. 22