

Review Article



Tailoring radicality in early cervical cancer: how far can we go?

Jacobus van der Velden , Constantijne H. Mom

Department of Gynecologic Oncology, Amsterdam University Medical Center, Amsterdam, The Netherlands

OPEN ACCESS

Received: Nov 14, 2018

Accepted: Nov 14, 2018

Correspondence to

Jacobus van der Velden

Department of Gynecologic Oncology,
Amsterdam University Medical Center,
Meibergdreef 9, 1105 AZ Amsterdam,
The Netherlands.

E-mail: j.vandervelden@amc.uva.nl

Copyright © 2019. Asian Society of
Gynecologic Oncology, Korean Society of
Gynecologic Oncology

This is an Open Access article distributed
under the terms of the Creative Commons
Attribution Non-Commercial License (<https://creativecommons.org/licenses/by-nc/4.0/>)
which permits unrestricted non-commercial
use, distribution, and reproduction in any
medium, provided the original work is properly
cited.

ORCID iDs

Jacobus van der Velden

<https://orcid.org/0000-0002-5985-1163>

Constantijne H. Mom

<https://orcid.org/0000-0003-2838-2031>

Presentation

Presented in part at the 104th Annual
Congress of Korean Society of Obstetrics
and Gynecology (KSOG) and the 23rd Seoul
International Symposium KSGO, 28-29
September 2018.

Conflict of Interest

No potential conflict of interest relevant to this
article was reported.

ABSTRACT

Today, the patient who is diagnosed with early cervical cancer is offered a variety of treatments apart from standard therapy. Patients can be treated with a less radical hysterectomy (RH) regarding parametrectomy, a trachelectomy either vaginal or abdominal, and this can be performed through a minimal invasive or open procedure. All this in combination with nerve sparing and/or sentinel node technique. Level 1 evidence for the oncological safety of all these modifications is only available from 3 randomized controlled trials (RCTs). Two RCTs on more or less radical parametrectomy both showed that oncological safety was not compromised by doing less radical surgery. Because of the heterogeneity of the patient population and the high frequency of adjuvant radiotherapy, the true impact of surgical radicality cannot be assessed. Regarding the issue of oncological safety of fertility sparing treatments, case-control and retrospective case series suggest that trachelectomy is safe as long as the tumor diameter does not exceed 2 cm. Recently, both a RCT and 2 case-control studies showed a survival benefit for open surgery compared to minimally invasive surgery, whereas many previous case-control and retrospective case series on this subject did not show impaired oncological safety. In a case-control study the survival benefit for open surgery was restricted to the group of patients with a tumor diameter more than 2 cm. Although modifications of the traditional open RH seem safe for tumors with a diameter less than 2 cm, ongoing prospective RCTs and observational studies should give the final answer.

Keywords: Early Cervical Cancer; Tailoring Radicality; Radical Hysterectomy; Trachelectomy; Minimally Invasive Surgery

INTRODUCTION

With an estimated 570,000 cases and 311,000 deaths in 2018 worldwide, cervical cancer ranks as the fourth most frequently diagnosed cancer and the fourth leading cause of cancer death in women. Cervical cancer is the most commonly diagnosed cancer in 28 countries with a low human development index and the leading cause of cancer death in 42 countries, the vast majority of which are in Sub-Saharan Africa and Southeastern Asia and presenting at a late stage [1,2]. In other parts of the world cervical cancer is gradually becoming an orphan disease because of the introduction of human papilloma virus (HPV) vaccination and early

Author Contributions

Conceptualization: V.D.V.J., M.C.H.; Formal Analysis: V.D.V.J.; Project Administration: V.D.V.J.; Supervision: V.D.V.J.; Validation: V.D.V.J.; Visualization: V.D.V.J.; Writing - original draft: V.D.V.J., M.C.H.; Writing - review & editing: V.D.V.J., M.C.H.

detection of pre-invasive disease by screening. As a consequence, many patients present at an early stage (International Federation of Gynecology and Obstetrics [FIGO] stage I/IIA) [3].

This early stage is mainly treated by surgery and less frequent by radiotherapy, depending on the diameter of the tumor and sometimes depending on the preference of the treating physician and/or patient. While 2 decades ago surgical treatment for the majority of patients entailed a radical hysterectomy (RH) with a complete pelvic node dissection (one fits all), currently many patients get individualized treatment. The type of individualized treatment depends on the wish to retain fertility (trachelectomy), the wish to lower morbidity (less radical parametrectomy, sentinel node procedure and nerve sparing surgery) and the wish to get a quicker recovery resulting in a shorter hospital stay and a less extensive abdominal scar (minimally invasive surgery). These modifications were gradually introduced over the last 2 decades [4-6]. The safety of these modifications was and is mostly analyzed by retrospective case series or case-control series, using frequency of recurrences and survival as endpoints and only rarely by randomized controlled trials (RCTs). The problem with this way of analyzing “oncological safety” in case series is that we do not always know what to consider as standard baseline recurrence frequency and/or survival. This also depends on the clinical and pathological characteristics of the patients. In the absence of a RCT a case-control study is considered second best. However, in case-control series the controls (treated by RH) are frequently historical controls. These patients tend to have a much longer follow-up with a resultant higher recurrence rate. When matching is not properly performed and the historical controls have more poor prognostic variables, this may result in comparing “apples with oranges.”

In this review we have critically analyzed the available evidence for the safety of the major modifications in surgical treatment for early cervical cancer (stages IA, IB1, IB2, and IIA1) introduced over the last two decades such as various types of radicality regarding parametrectomy, trachelectomy, and minimally invasive surgery.

SAFETY OF A LESS RH

Over the years surgeons have tried to standardize the extend of radicality of the RH in order to “speak the same language.” From 1974 till 2017 various proposals for standardization of radicality were published (**Table 1**) [7-12]. These different types of radicality concerned the radicality of the parametrium, the pararectal and paracolpal tissues, with or without classifying nerve sparing surgery as a separate entity. Others also tried to standardize the extend of lymphadenectomy in either 3 classifications [13] or 4 classifications [12] on the basis of the anatomic regions of the pelvic and para aortic lymphatic basin. Because of the direct relationship between extend of RH and morbidity, especially bladder morbidity, many gynecologic oncologists want to diminish the extend of the parametrectomy and paracolpomy in order to save the autonomic nerve plexus from dissection to avoid this type of bladder morbidity [14,15]. The question now arises in which subgroups can we safely perform less radical surgery and what is the evidence for the oncological safety. The first study, hypothesizing that the extend of the radicality/parametrectomy may be less important in a favorable subgroup, used RH specimen with a tumor size of 2 cm or less and absent vascular space invasion (VSI), to show that parametrial involvement in this subgroup was not present [16]. Later, other authors, came to the conclusion that not only tumor diameter, but also the presence of nodal metastases and depth of infiltration were important risk factors for the presence of parametrial involvement (**Table 2**) [17-23]. During the same time period three

Table 1. Various classifications of the extent of radicality of the hysterectomy

Piver et al., 1974 [7]	Trimbos, 2009 [9]	Cibula et al., 2011 [10]	KSOG, 2017	Querleu, 2017 [11]
Class I <ul style="list-style-type: none"> • Identification ureter • Hysterectomy (total removal cervix) • No vaginal cuff 	Ventral extension <ul style="list-style-type: none"> • V1-medial to ureter • V2-including medial part of posterior leaf of VUL • V3-including lateral part of posterior leaf of VUL 	Type A <ul style="list-style-type: none"> • No ureteral dissection • No parametrial resection • Full removal paracervical tissues up to attachment vaginal fornices 	Type A Minimum resection of paracervix <ul style="list-style-type: none"> • Identification ureter • Hysterectomy (total removal cervix) • No vaginal cuff 	Type A <ul style="list-style-type: none"> • Identification ureter • Hysterectomy lateral of para cervix medial of ureter • 5 mm resection VUL and RVL • Vaginal cuff <10 mm
Class II Modified RH <ul style="list-style-type: none"> • Ureters dissected but not from pubovesical ligament • Uterine arteries dissected medial form ureter • Uterosacral ligaments dissected midway sacral insertion • Cardinal ligaments dissected op to medial half • Removal upper 1/3 vagina • Pelvic lymphadenectomy 	Lateral extension <ul style="list-style-type: none"> • L1-medial to ureter • L2 between ureter and pelvic side wall • L3 at pelvic side wall 	Type B Modified RH <ul style="list-style-type: none"> • Ureter unroofed and dissected from cervix • Resection of small part of medial leaf VP • Horizontal resection of about 1–1.5 cm of LP • Horizontal resection of 1–2 cm of DP dorsal from cervix 	Type B Transection of paracervix at ureter <ul style="list-style-type: none"> • Ureter unroofed and rolled laterally • Paracervix transected at level of ureteric tunnel • Uterosacral and VUL: partial resection • Neural component of paracervix: no resection • Vaginal cuff >10 mm 	Type B B1 <ul style="list-style-type: none"> • Ureter deperitonized and rolled to lateral side • Partial resection of uterosacral and VUL • Section of paracervical tissue at level of ureteral tunnel • Vaginal cuff 10 mm and no resection of paravaginal tissue • No removal of lateral paracervical nodes B2 <ul style="list-style-type: none"> • As B1 but removal of lateral paracervical nodes
Class III Classical RH <ul style="list-style-type: none"> • Complete dissection of ureters except for a small part where the umbilical bladder artery is penetrated the bladder • Uterine artery at the origin of hypogastric • Uterosacral ligaments excised at sacral origin • Cardinal ligaments excised as close to pelvic wall • Removal of upper 1/2 of vagina • Pelvic lymphadenectomy 	Caudal extension <ul style="list-style-type: none"> • C1-above ureter • C2-above deep uterine vein • C3-under deep uterine vein 	Type C C1 <ul style="list-style-type: none"> • Ureter complete dissected from cervix and LP, partially from VP (1–2 cm) • LP (transverse): up to medial aspect of internal iliac vessels • LP (longitudinal): up to deep uterine vein (caudal part containing splanchnic nerve preserved) • VP (transverse): resection of 1–2 cm • VP (longitudinal): up to bladder branch hypogastric plexus below ureter • DP (transverse): up to recto-uterine ligament at origin of rectum • DP (longitudinal): sagittal dissection of recto-uterine and recto-vaginal ligaments C2 <ul style="list-style-type: none"> • Dissection ureter from ventral parametrial up to bladder wall • LP (transvers): as C1 • LP (longitudinal): to pelvic floor (splanchnic nerves are sacrificed) • VP (transverse): complete removal up to bladder • VP (longitudinal): up to level of paracolpium vaginal resection (hypogastric plexus sacrificed) • DP (transverse): as C1 • DP (longitudinal): complete resection (hypogastric plexus sacrificed) 	Type C Transection of the paracervix at its junction with internal iliac vascular system <ul style="list-style-type: none"> • Transection of uterosacral ligament at rectum • Transection of VUL at bladder • Resection 15–20 mm vaginal cuff with paracervix C1 <ul style="list-style-type: none"> • With preservation autonomic nerves C2 <ul style="list-style-type: none"> • Without preservation autonomic nerves 	Type C C1 <ul style="list-style-type: none"> • Ureters fully mobilized • Paracervix resection at internal iliac artery • Uterosacral ligaments resection at level of rectum • Sectioning VUL at level of bladder • Vaginal cuff at least 15–20 mm with paracolpial tissue • Preservation of autonomic nerves C2 <ul style="list-style-type: none"> • As C1 without preservation of autonomic nerves

(continued to the next page)

Table 1. (Continued) Various classifications of the extent of radicality of the hysterectomy

Piver et al., 1974 [7]	Trimbos, 2009 [9]	Cibula et al., 2011 [10]	KSOG, 2017	Querleu, 2017 [11]
Class IV As previous with addition of: • Complete dissection of ureter from pubovesical ligament • Umbilical vesical artery is sacrificed • Vaginal cuff ¾ of vagina	Dorsal extension • D1-between uterus and rectum • D2-anterior of rectal border • D3-halfway rectal circumference	Type D Differs from C2 only in lateral extent • LP (tranverse): sacrificing internal iliac vessels • Lateral border is lumbosacral nerve plexus and piriform and internal obturator muscle	Type D Entire dissection of paracervix with vessels D1 • Resection with iliac vessels, exposing sciatic nerve D2 • As D1 with resection of adjacent muscle and fascial structures	Type D D1 • Resection of paracervix to pelvic bony wall sacrificing iliac vessels • Ureter fully ambulant D2 • As D1 with resection of adjacent muscles and fascia
Class V As previous with addition of: • Excision of portion of ureter/bladder				

DP, dorsal parametrium; LP, lateral parametrium; RH, radical hysterectomy; VP, ventral parametria; VUL, vesico-uterine ligament.

prospective controlled trials showed that less radical parametrectomy was safe in early cervix cancer, where “early” was defined in some studies as “stage IB”, in another study as stage IB1 and in yet another study as IB1 and IB2 (less than 6 cm) [14,24,25]. In the first prospective controlled study (not randomized but “alternating” treatment) patients either underwent a Wertheim-Meigs procedure (n=108) or a less radical Galvin-TeLinde procedure (n=102) [24]. Recurrences occurred in 20% and 22% of cases and overall survival (OS) was reported to be 72% and 78% respectively. This study is subject to serious criticism. Firstly, no randomization took place, resulting in an imbalance in prognostic variables in favor of the less radical group such as the presence of positive nodes (11% in less radical vs. 17% in more radical group) or parametrial involvement (5% vs. 12%). Secondly, the high frequency of adjuvant radiotherapy (50%) could potentially compensate for less radical surgery, precluding firm conclusions on the effect of radicality.

In a second prospective randomized study a Piver class II RH was compared with a Piver class III in patients with stage IB1 and stage IB2 (<6 cm) [14]. This study was well balanced regarding prognostic factors and showed no difference in recurrence rate (24% vs. 26%, respectively) and OS (81% vs. 77%). This study, again, showed a high frequency (55% in both arms) of adjuvant radiotherapy. In patients with a tumor diameter >4 cm this frequency was even 80%.

A third, very daring, RCT compared a Piver class I (n=62) with a Piver class III (n=63) hysterectomy in stage IB1 cervix cancer [25]. Recurrence rates (24% and 13%, respectively) and OS (85% and 95%, respectively), although differing quite substantially in absolute terms, did not show significant differences. However, in the small subgroup of patients with a tumor

Table 2. Collated literature data on low-risk variables in early cervical cancer predicting absence of PM involvement

Author	Low risk variables	No.	PM involvement
Kinney et al. [16]	≤2 cm, VSI negative	83	0%
Covens et al. [17]	≤ 2 cm, DOI <10 mm, negative nodes	536	0.6%
Stegeman et al. [18]	≤2 cm, DOI <10 mm, VSI negative, negative nodes	103	0%
Wright et al. [19]	<2 cm, VSI negative, negative nodes	270	0.4%
Frumovitz et al. [20]	≤2 cm, VSI negative	125	0%
Kim et al. [21]	DOI ≤5 mm, (3.6% positive nodes, median diameter 16.6 mm)	140	0%
Kodama et al. [22]	≤2 cm, VSI negative, age ≤50 years (1.6% positive nodes) or DOI ≤10 mm, VSI negative, age ≤50 years (2.9% positive nodes)	64	0%
		68	0%
Lee et al. [23]	≤2 cm (2.5% positive nodes)	40	0%

DOI, depth of invasion; PM, parametrial; VSI, vascular space invasion.

diameter >3 cm there was a significant difference in OS in favor of more radical surgery (74% vs. 97%). This study was clearly underpowered and also showed a very high frequency of adjuvant radiotherapy (69% vs. 55%, respectively).

When these three studies are critically analyzed, we must focus on the high frequency of adjuvant radiotherapy in more than 50% of the patients in all 3 studies. The larger the tumor diameter, the more adjuvant radiotherapy was given (in the poor prognostic group with a tumor diameter of >4 cm this frequency increased to >80% of the patients). Because adjuvant radiotherapy will most likely compensate less radical surgery, the interpretation of the studies discussed here can only be that the real impact of radicality cannot be assessed. There is an indication that the impact of adjuvant radiotherapy in a group of patients with intermediate risk factors (Sedlis criteria) is less important when more radical surgery is used [26]. In the latter study a more radical Okabayashi variant of the Wertheim RH was used in 57 patients with intermediate risk factors. None of the patients had adjuvant radiotherapy and a 6% pelvic recurrence rate was found. This compared favorably with the results of a randomized Gynecologic Oncology Group study where the isolated pelvic recurrence rate was 13% and 19% for patients in intermediate risk groups who did and who did not receive adjuvant radiotherapy after a standard RH [27]. Although non-randomized studies have a lower level of evidence, they become important when the studies showing level 1 evidence are subject to substantial criticism. A recently published retrospective study on 2124 patients with early cervical cancer showed that, other than the conventional prognostic variables such as tumor diameter, vascular space invasion, depth of invasion, lymph node and parametrial involvement, also the radicality of the surgery (using the Leiden TNM classification [9]) had an independent prognostic impact on recurrence rate and survival [28]. The impact of radicality was greatest in tumor diameter >4 cm, while in the subgroup of patients with a tumor diameter <2 cm no difference in disease-free survival (DFS) was seen (**Fig. 1**). The frequency of 34% adjuvant radiotherapy was much lower than previously discussed in the prospective studies. Another recently published population-based study in stage IB1 cervix cancer also showed no impact on survival of more radical surgery in tumors <2 cm [29]. However, in contrast to the previous study, more radical surgery in tumors >2 cm did not have an impact on survival either. Because of missing information on the frequency of adjuvant radiotherapy for the subgroup of patients with a tumor diameter more than 2 cm who had less radical surgery it is impossible to assess the true impact of more or less radicality in that particular subgroup. An ongoing RCT (SHAPE study) where patients with negative pelvic lymph nodes and a tumor diameter 2 cm or less are randomized to either get a type II RH or a simple hysterectomy and an ongoing observational study in a similar group of patients (ConCerv study) will hopefully confirm the oncological safety of less radical surgery for small tumors [30,31].

RADICAL TRACHELECTOMY (RT)

Since the first publication on RT by Dargent in 1994 numerous retrospective case series and case-control studies have been published over the last 25 years [32]. Originally a vaginal radical trachelectomy (VRT) was recommended for tumors with a diameter less than 2 cm, after the confirmation of tumor negative pelvic nodes, obtained by a laparoscopic approach. Over time several modifications have been introduced, both less radical such as a simple trachelectomy or conization or more radical such as the abdominal radical trachelectomy (ART). With the use of the abdominal and more radical approach also the indications for

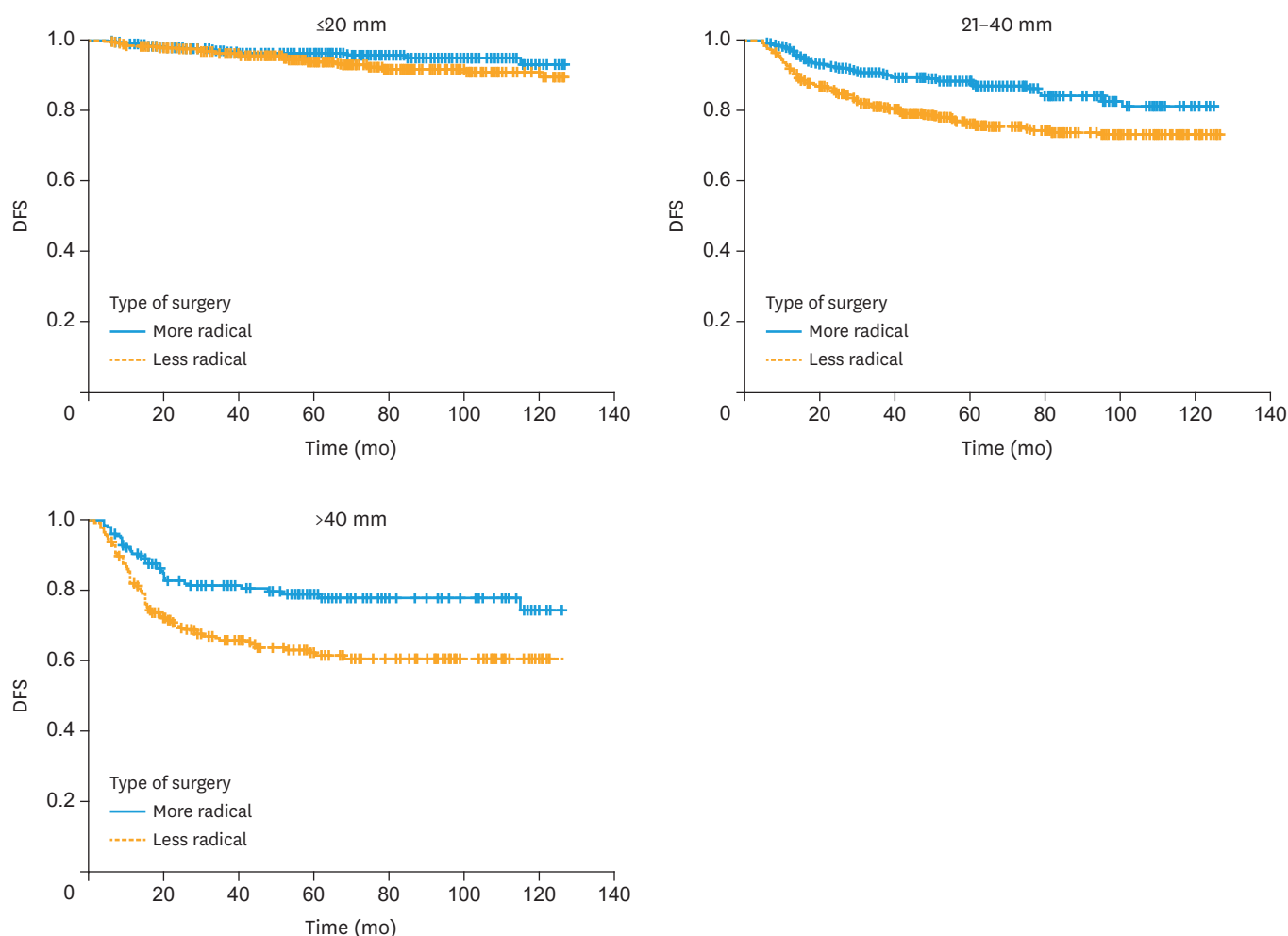


Fig. 1. Kaplan-Meier curves for DFS in tumor diameter subgroups. Five-year DFS for more radical surgery vs. less radical surgery: ≤ 20 mm, 97% vs. 95% ($p=0.348$); 21–40 mm, 89% vs. 79% ($p<0.001$); and >40 mm, 79% vs. 64% ($p=0.004$). Figure reprinted from PhD thesis with author's permission "Derks, M. (2017). Radical surgery for early stage cervical cancer." DFS, disease-free survival.

fertility sparing surgery widened. Also, tumors with a diameter >2 cm were treated by fertility sparing surgery. Unfortunately, pregnancy rates after more radical procedures decreased. To enhance pregnancy rates the use of neo-adjuvant chemotherapy (NACT) was proposed, resulting in down staging of the tumor in order to perform a less radical surgical procedure [33]. Assessing oncological safety in this context is extremely difficult because randomized trials will never be performed. We must therefore deal with the results of retrospective case series or case-control studies. Where some recent case series show recurrence in 1/151 patients (0.7%) [34], others show recurrences in 8/43 (18.5%) patients [35]. This represents the different frequencies of prognostic variables in these patient populations under study. Therefore case-control series are a better way to assess the oncological safety. Here we would like to critically review the available case-control series with a focus on how well controls were matched regarding prognostic factors and duration of follow-up. Marchiole and co-workers [36] were the first to compare VRT with a laparoscopic assisted radical vaginal hysterectomy. The study was not well balanced because tumor diameter ≥ 2 cm was significantly more frequent in the RH group (40% vs. 18%). Recurrence frequencies did not differ for the small tumors (<2 cm) but more recurrences were observed in patients who had

a trachelectomy with a larger tumor (29% vs. 16%). Furthermore, the trachelectomy group represented a very favorable group of patients of which 46% had no residual tumor in the trachelectomy specimen and only 4.2% positive nodes. The authors concluded that a VRT is only safe in tumors less than 2 cm in diameter. The problem of comparing groups with different tumor diameters was also seen in the study of Diaz et al. [37] where size ≥ 2 cm was significantly more frequent in the RH group (8% vs. 39%). In addition, the distribution of the variable “absence of residual disease in the operative specimen” was not well balanced (53% vs. 22%). Despite the presence of significant more favorable prognostic variables in the trachelectomy group (both VRT and ART), disease-specific survival (DSS) was similar for both the trachelectomy and RH groups, where you would expect a much better survival for the trachelectomy group. A well-balanced case-control study by Beiner et al. [38] of a very favorable subgroup (negative nodes, <2 cm diameter, and 70% no residual), compared VRT with RH. However, even with these very favorable parameters they found 5.6% recurrences in the VRT group and only 1.1% in the RH group. Because this difference was not statistically significant, the authors concluded that a VRT in tumors <2 cm is a safe procedure. It must be kept in mind that the total numbers in this study were small (only 90 patients in each arm) resulting in an underpowered study.

The case-control studies discussed so far showed no significant difference in recurrence rate or survival between VRT and RH (**Table 3**). In most studies the majority of patients had a tumor less than 2 cm, therefore the conclusion must be that in tumors less than 2 cm a radical vaginal trachelectomy seems to be a safe procedure. Hopefully, we will get a confirmation of this statement from the results of an ongoing prospective observational study where patients with pelvic lymph nodes and a tumor diameter of 2 cm or less are treated by a conization only (Concerv study) [31]. A recent population-based case-control study in the United States compared trachelectomy (n=29), unfortunately not specified if this was a VRT or ART, with RH (n=1,428) and showed a 5-year cancer specific mortality rate of 14.4% vs. 8.4% (p=0.41), respectively [39]. On the basis of these results, the authors advised careful counseling because they felt that the shown trend, although not significantly different, was not in favor of trachelectomy. Also in a series comparing a VRT with a more radical ART in patients with a tumor more than 2 cm, a high recurrence rate of 22% (5/23) was found for the VRT group while no recurrences were found in the ART group (0/19) [40]. This led to the hypothesis that an ART should be used for the larger tumors. As yet 3 case-control studies have been published on the safety of ART [41-43]. The first study by van Gent and co-workers [41] showed no difference in recurrence rate and survival for nerve sparing ART vs. nerve sparing RH in a well-balanced but small study. However, with median tumor

Table 3. Case-control studies comparing oncological outcomes of RT vs. RH

Study		Numbers		Follow-up (mon)		Diameter <2 cm		Recurrence		Type of RT
		RT	RH	RT	RH	RT	RH	RT	RH	
Marchiole et al. [36]	Diameter <2 cm	118	139	95	113	40%	18%	7/118 (5.9%)	9/139 (6.5%)	118 VRT
	Diameter ≥ 2 cm							6/21 (28.6%)	9/56 (16.1%)	
Diaz et al. [37]	RFS	40	110	15 (total: 44)		39%	8%	1/40 (2.5%)	?	28 VRT/12 ART
	DSS							92%	91%	
Beiner et al. [38]		90	90	51	58	0%	0%	5/90 (5.6%)	1/90 (1.1%)	90 VRT
Matsuo et al. [39]		29	1,428	Total: 76		100%	100%	14.4%	8.4%*	Unknown
van Gent et al. [41]		28	77	47	52	14 mm	18 mm	2/28 (7.1%)	11/77 (14%)	28 ART
Li et al. [42]		107	141	30	49	57%	58%	2/107 (1.9%)	3/141 (2.1%)	107 ART
Guo et al. [43]		143	186	75	83	52%	53%	4/143 (2.8%)	8/186 (4.3%)	143 ART

DSS, disease specific survival; RFS, recurrence-free survival; RH, radical hysterectomy; RT, radical trachelectomy.

*Five-years cervical cancer specific mortality rate.

diameters of 14 and 18 mm for the ART and RH groups, respectively, this study was not very valid in assessing safety of ART for larger tumors. Two recent case-control studies comparing ART with RH included relatively large numbers of tumors >2 cm. The first study by Li et al. [42] was well-balanced regarding prognostic variables. No difference in recurrence rate was found for ART vs. RH in tumors with a tumor diameter more than 2 cm (2/61 [3.3%] vs. 3/82 [3.7%], respectively). The median follow-up for the ART group, however, was significantly shorter (30 vs. 49 months) resulting in a potential lower risk on recurrence for the ART group. The second study by Guo et al. [43] was also well balanced and showed no significant difference in recurrence rate for the ART group vs. the RH group in total. Unfortunately, it was not possible to compare recurrence rates for the subgroup of patients with tumors more than 2 cm because no data were available for the RH group. Median follow-up did not differ between groups (76 vs. 83 months). A remarkable fact was that there were no differences in recurrence rates between patients with tumors more or less than 2 cm in the ART group (2.7% vs. 2.9%, respectively). This is definitely in contrast to literature data in large patient sets where 3.5 times more recurrences are found in patients with tumors between 2–4 cm compared with tumors less than 2 cm [28]. Also, the fact that no recurrences were reported after 30 months is in contrast with literature data showing that 50% of the recurrences occur after 27 months [44]. This same problem was seen in the study of Li et al. [42] where no recurrences were reported after 20 months. Both the fact that there was no difference in recurrence rate between less and more than 2 cm in the Guo et al.'s study [43] and the fact that after 20 and 30 months no further recurrences were reported in the Li and Guo studies, respectively, raises the question if the follow-up was complete. The sparse evidence for the safety of an ART in patients with tumors more than 2 cm, combined with the decrease in pregnancy rates for ART compared with VRT resulted in initiatives such as NACT followed by less radical surgery [33]. At this point in time the few retrospective data preclude a safe evidence-based recommendation. Therefore, we must await initiatives for prospective studies using NACT in this setting.

MINIMALLY INVASIVE RH

In the last decades, one of the surgical developments directed at reducing morbidity without compromising survival is the use of minimally invasive techniques, such as laparoscopy and robotic surgery. The advantage of these techniques compared to open procedures is a shorter hospital stay and possibly less complications. Working with a surgical robot has the benefit of improved visibility, highly accurate instrument control and better ergonomics for the surgeon, but it lacks tactile feedback. Several retrospective studies and meta-analyses have been published comparing minimally invasive RH with laparotomy, and recently data of a large randomized trial have been presented. Surprisingly, these studies show conflicting results. A systematic review and meta-analysis of 26 retrospective cohort studies investigated abdominal, laparoscopic and robotic RH in 4,013 patients with early stage cervical cancer in terms of intra- and postoperative outcomes [45]. In this study, the robotic procedure took more time, but was associated with less blood loss, less wound related complications, less febrile morbidity and shorter hospital stay than the open RH. The laparoscopic approach was equivalent to the robot-assisted RH. These results were also seen in a meta-analysis by Wang et al. [46]. They included 12 cohort studies with a total of 1,539 patients comparing laparoscopic (n=754) with open RH (n=785) in early stage cervical cancer. Laparoscopy was associated with less blood loss, less postoperative complications and a shorter hospital stay. Five-year OS and 5-year DFS were similar in both groups. However, only 4 studies in

this meta-analysis provided data on DFS and 2 on OS. Park et al. [47] recently published a systematic review and meta-analysis evaluating the safety and effectiveness of robot-assisted RH compared to laparoscopy and laparotomy. They included 22 studies with a total of 1,062 patients. Most of these studies were single-center cohort studies. In robot-assisted surgery less wound infections, fever and urinary tract infections were seen, but more vaginal cuff complications compared to the open group. Complication rates were similar in the robot-assisted and laparoscopy groups. Only four studies in this systematic review reported survival outcomes and no differences were seen between the groups. However, the follow up periods for the various surgical approaches varied and therefore no firm conclusions could be made with regard to survival.

After these reviews four other retrospective studies have been published (**Table 4**). One study was a multicenter study comparing robot-assisted RH with laparotomy [48]. A total of 259 cervical cancer patients received a robot-assisted RH and 232 patients underwent an open procedure. Mean estimated blood loss, transfusion rates and intra-operative complications were lower with robotic surgery. The length of stay at the hospital was also shorter, while the operation time was longer. Recurrence rate and survival were comparable, however, the patients that were treated by robot-assisted surgery had a shorter follow up time (a mean of 34.6 months vs. 45.2 months for the laparotomy group). A retrospective cohort study in the United States evaluated surgical and clinical outcomes in minimally invasive surgery compared to laparotomy [49]. Of 382 patients with early cervical cancer, 101 underwent a minimally invasive RH and 282 a laparotomy. Patients in the minimally invasive group had less estimated blood loss during surgery, less blood transfusions and a shorter hospital stay. After a mean follow up of 5.1 years (± 4.2 years) no differences were seen with regard to OS and rate of recurrence. However, of the patients included in the study, 31.7% had stage IA disease and therefore a very good prognosis to start with, perhaps even regardless of the type of surgery. Another retrospective study investigated the surgical and oncological outcomes in 155 patients that were treated by robot-assisted RH and 149 patients that underwent an open RH [50]. Intra-operative complications, blood loss and length of hospital stay were also lower in the robot group, but recurrence rates were significantly higher. Recurrence was detected in

Table 4. Summary of characteristics of most recent case-control studies comparing minimally invasive surgery (MI) with open surgery (O) in early cervical cancer. (*not specified < or = 2 cm; NR=not reached; †median survival in months estimated from survival figure; ‡5 years overall survival; §5 years progression free survival; ¶after inverse probability of treatment weighting; ††Statistically significantly different)

Characteristics	Sert et al. [48]		Diver et al. [49]		Wallin et al. [50]		Melamed et al. [51]	
	O (232)	MI (259)	O (282)	MI (101)	O (155)	MI (149)	O (1,340) [†]	MI (1,334)
Stage								
IA	10%	14%	32%	33%	8%	12%	12%	12%
IB1	80%	80%	63%	66%	82%	84%	88%	88%
IB2/IIA	10%	6%	(IB1+IB2)		4%	1%		
Positive nodes	12%	10%	11%	9%	14%	8%	11%	9%
Median diameter								
<12 mm	43%	50%						
<2 cm					50%*	61%	40%	40%
≥2 cm					50%	39%	47%	47%
Unknown			100%	100%			13%	13%
Adjuvant RT	33%	27%	20%	24%	49%	22%	22%	21%
Recurrence (%)	9%	9%	5%	6%	10.3%	13.4%	?	?
Survival	NR	87% [†]	95% [‡]	95%	90.7% [§]	82.5% [¶]	94.7%	90.9% ^{††}
Follow-up	39	34	5.1±4.2 years		Study ended 2015, published 2016		45 months	
	Median months		Mean total group				Median total group	

*Not specified <2 cm; †Median survival in months estimated from survival figure; ‡5-years overall survival; §5-years progression free survival; ¶After inverse probability of treatment weighting; ††Statistically significantly different.

13.4% of the patients after robotic surgery and in 10.3% after an open procedure. According to the authors, the higher recurrence rate with robot-assisted RH may have been due to the learning curve. A recently published large retrospective study showed similar results [51]. In this study, the National Cancer Database in the United States was used to compare minimally invasive surgery with laparotomy in patients with early stage cervical cancer diagnosed between 2010 and 2013. Of the 2,461 patients included in the study, 49.8% underwent a minimally invasive procedure, and in this group 79.8% had a robot-assisted laparoscopy. In the minimally invasive group the 4-year mortality was 9.1% and in the laparotomy group it was 5.3%. Patients treated by minimally invasive surgery had a 65% higher risk of death from any cause compared to laparotomy (hazard ratio [HR]=1.65; 95% confidence interval [CI]=1.22–2.22). The authors also performed an interrupted time-series analysis using data from the Surveillance, Epidemiology and End Results (SEER) database from 2000–2010. Before the introduction of the minimally invasive RH the 4-year relative survival rate was stable. The introduction of minimally invasive surgery for early cervical cancer in 2006 coincided with the beginning of a decline in the 4-year relative survival rate. Retrospective studies are at risk for bias. RCTs provide a higher level of evidence and therefore the outcomes of the first RCT, the Laparoscopic Approach to Cervical Cancer (LACC) trial, were eagerly awaited. Results from this study were recently published in the *New England Journal of Medicine* [52]. The LACC study is the first randomized, phase 3 trial comparing minimal invasive RH with the abdominal approach. In this study, 631 patients with early stage cervical cancer (stage IA1 with LVSI, IA2, and IB) were randomized to a total abdominal RH or a minimally invasive RH, either by laparoscopy (84.4% of the minimally invasive group) or robot-assisted (15.6%). Primary objective of the study was DFS at 4.5 years. Secondary objectives included OS, recurrence, and morbidity. Contrary to what was expected, the DFS was worse in the minimally invasive group (86% vs. 96.5% for the abdominal approach group; HR=3.74; 95% CI=1.63–8.58). OS after 3 years was also inferior in the patients treated with a minimally invasive procedure: 93.8% vs. 99% in the laparotomy group (HR=6.00; 95% CI=1.77–20.3). The recurrence rate was 27/319 in the minimally invasive arm compared to 7/312, while there was no difference in short- or long-term morbidities.

There is no clear answer to the question why a higher recurrence rate and worse survival are seen in (robot-assisted) laparoscopically treated patients in these recent studies. The results are in contrast to many earlier retrospective studies showing a similar survival and less perioperative morbidity with laparoscopy compared to laparotomy. However, retrospective data should always be cautiously interpreted. In retrospective series, the groups may not be well balanced, and furthermore, imaging and radiotherapy techniques were less sophisticated in older cohorts, resulting in relatively worse outcomes in the historical group, in this case the patients treated by laparotomy. Another factor of importance may be tumor size. As mentioned before, tumors larger than 2 cm may require a more radical approach than smaller tumors. In the LACC trial no difference was made between tumors larger than 2 cm and those smaller than 2 cm. At the annual American Society of Clinical Oncology (ASCO) meeting in 2018 an abstract was presented in which tumor size was taken into account in a retrospective comparison between open RH to minimally invasive RH (robotic and laparoscopy) in patients with early stage cervical cancer [53]. Data from the American National Cancer Database were used to evaluate the 5-year survival in patients treated between 2010–2013. A total of 982 patients was treated with open surgery and 910 patients underwent a minimally invasive procedure. A decreased survival was observed in patients with a tumor ≥ 2 cm that had laparoscopic or robotic surgery (81.3% 5-year survival compared to 90.8% in the open group; $p < 0.001$). Less surgical complications and lower costs were seen with minimally invasive RH.

CONCLUSIONS

Deviation from standard treatment for tumors less than 2 cm seems safe. However, there is no reliable level 1 evidence for this statement. This means that we have to await currently ongoing prospective RCTs (SHAPE and ConCerv studies) to find out if we can really tailor the radicality in patients with tumors less than 2 cm. For tumors more than 2 cm in diameter, it seems that we have to make a choice: either more radical surgery with restricted indications for adjuvant radiotherapy or less radical surgery but with a higher frequency of adjuvant radiotherapy. In the end, the discussion will then focus on the comparison of the morbidity of both treatment modalities. Likewise, fertility sparing surgery in patients with tumors less than 2 cm in diameter seems safe. However, no prospective studies have been published so far to show the oncological safety. Therefore, we are awaiting the results of the ConCerv study, hopefully confirming the reassuring results of the retrospective studies. For tumors with a diameter more than 2 cm retrospective data show conflicting results regarding oncological safety when fertility sparing surgery is used. It is recommended to support initiatives for prospective studies using NACT in these patients in order to be able to perform less radical surgery without compromising oncological safety. The safety of minimally invasive surgery for early stage cervical cancer is a matter of ongoing debate, since a recent RCT showed an increase in recurrence rate and impaired survival for patients treated by minimally invasive techniques. Although a retrospective study showed that tumor size played a role (impaired survival in minimally invasive group only for patients with tumor diameter >2 cm), the RCT was not powered to give a definite answer to this question. Finally, it is our personal opinion, that deviating from the standard open RH in patients with a tumor diameter >2 cm is only recommended in observational studies where patients are counseled about the possible increased risk of recurrence.

REFERENCES

1. Bray F, Ferlay J, Soerjomataram I, Siegel RL, Torre LA, Jemal A. Global cancer statistics 2018: GLOBOCAN estimates of incidence and mortality worldwide for 36 cancers in 185 countries. *CA Cancer J Clin* 2018;68:394-424.
[PUBMED](#) | [CROSSREF](#)
2. Hota PK, Panda N, Nayak B, Samantaray S. Geographical distribution of cervical cancer in Odisha: a 5-year retrospective study at a regional cancer center. *South Asian J Cancer* 2018;7:34-6.
[PUBMED](#) | [CROSSREF](#)
3. Pettersson BF, Hellman K, Vaziri R, Andersson S, Hellström AC. Cervical cancer in the screening era: who fell victim in spite of successful screening programs? *J Gynecol Oncol* 2011;22:76-82.
[PUBMED](#) | [CROSSREF](#)
4. Ramirez PT, Pareja R, Rendón GJ, Millan C, Frumovitz M, Schmeler KM. Management of low-risk early-stage cervical cancer: should conization, simple trachelectomy, or simple hysterectomy replace radical surgery as the new standard of care? *Gynecol Oncol* 2014;132:254-9.
[PUBMED](#) | [CROSSREF](#)
5. Tomao F, Corrado G, Peccatori FA, Boveri S, Preti EP, Colombo N, et al. Fertility-sparing options in young women with cervical cancer. *Curr Treat Options Oncol* 2016;17:5.
[PUBMED](#) | [CROSSREF](#)
6. Reynisson P, Persson J. Hospital costs for robot-assisted laparoscopic radical hysterectomy and pelvic lymphadenectomy. *Gynecol Oncol* 2013;130:95-9.
[PUBMED](#) | [CROSSREF](#)
7. Piver MS, Rutledge F, Smith JP. Five classes of extended hysterectomy for women with cervical cancer. *Obstet Gynecol* 1974;44:265-72.
[PUBMED](#)

8. Querleu D, Morrow CP. Classification of radical hysterectomy. *Lancet Oncol* 2008;9:297-303.
[PUBMED](#) | [CROSSREF](#)
9. Trimbos JB. TNM-like classification of radical hysterectomy. *Gynecol Oncol* 2009;113:397-8.
[PUBMED](#) | [CROSSREF](#)
10. Cibula D, Abu-Rustum NR, Benedetti-Panici P, Kohler C, Raspagliesi F, Querleu D, et al. New classification system of radical hysterectomy: emphasis on a three-dimensional anatomic template for parametrial resection. *Gynecol Oncol* 2011;122:264-8.
[PUBMED](#) | [CROSSREF](#)
11. Querleu D, Cibula D, Abu-Rustum NR. 2017 update on the Querleu-Morrow classification of radical hysterectomy. *Ann Surg Oncol* 2017;24:3406-12.
[PUBMED](#) | [CROSSREF](#)
12. Lee M, Choi CH, Chun YK, Kim YH, Lee KB, Lee SW, et al. Surgical manual of the Korean Gynecologic Oncology Group: classification of hysterectomy and lymphadenectomy. *J Gynecol Oncol* 2017;28:e5.
[PUBMED](#) | [CROSSREF](#)
13. Cibula D, Abu-Rustum NR. Pelvic lymphadenectomy in cervical cancer--surgical anatomy and proposal for a new classification system. *Gynecol Oncol* 2010;116:33-7.
[PUBMED](#) | [CROSSREF](#)
14. Landoni F, Maneo A, Cormio G, Perego P, Milani R, Caruso O, et al. Class II versus class III radical hysterectomy in stage IB–IIA cervical cancer: a prospective randomized study. *Gynecol Oncol* 2001;80:3-12.
[PUBMED](#) | [CROSSREF](#)
15. Derks M, van der Velden J, Frijstein MM, Vermeer WM, Stiggelbout AM, Roovers JP, et al. Long-term pelvic floor function and quality of life after radical surgery for cervical cancer: a multicenter comparison between different techniques for radical hysterectomy with pelvic lymphadenectomy. *Int J Gynecol Cancer* 2016;26:1538-43.
[PUBMED](#) | [CROSSREF](#)
16. Kinney WK, Hodge DO, Egorshin EV, Ballard DJ, Podratz KC. Identification of a low-risk subset of patients with stage IB invasive squamous cancer of the cervix possibly suited to less radical surgical treatment. *Gynecol Oncol* 1995;57:3-6.
[PUBMED](#) | [CROSSREF](#)
17. Covens A, Rosen B, Murphy J, Laframboise S, DePetrillo AD, Lickrish G, et al. How important is removal of the parametrium at surgery for carcinoma of the cervix? *Gynecol Oncol* 2002;84:145-9.
[PUBMED](#) | [CROSSREF](#)
18. Stegeman M, Louwen M, van der Velden J, ten Kate FJ, den Bakker MA, Burger CW, et al. The incidence of parametrial tumor involvement in select patients with early cervix cancer is too low to justify parametrectomy. *Gynecol Oncol* 2007;105:475-80.
[PUBMED](#) | [CROSSREF](#)
19. Wright JD, Grigsby PW, Brooks R, Powell MA, Gibb RK, Gao F, et al. Utility of parametrectomy for early stage cervical cancer treated with radical hysterectomy. *Cancer* 2007;110:1281-6.
[PUBMED](#) | [CROSSREF](#)
20. Frumovitz M, Sun CC, Schmeler KM, Deavers MT, Dos Reis R, Levenback CF, et al. Parametrial involvement in radical hysterectomy specimens for women with early-stage cervical cancer. *Obstet Gynecol* 2009;114:93-9.
[PUBMED](#) | [CROSSREF](#)
21. Kim MK, Kim JW, Kim MA, Kim HS, Chung HH, Park NH, et al. Feasibility of less radical surgery for superficially invasive carcinoma of the cervix. *Gynecol Oncol* 2010;119:187-91.
[PUBMED](#) | [CROSSREF](#)
22. Kodama J, Kusumoto T, Nakamura K, Seki N, Hongo A, Hiramatsu Y. Factors associated with parametrial involvement in stage IB1 cervical cancer and identification of patients suitable for less radical surgery. *Gynecol Oncol* 2011;122:491-4.
[PUBMED](#) | [CROSSREF](#)
23. Lee SH, Cho KJ, Ko MH, Cho HY, Lee KB, Lim S. Factors associated with parametrial involvement in patients with stage IB1 cervical cancer: who is suitable for less radical surgery? *Obstet Gynecol Sci* 2018;61:88-94.
[PUBMED](#) | [CROSSREF](#)
24. Stark G. Surgical therapy of stage IB cervix cancer. *Geburtshilfe Frauenheilkd* 1987;47:45-8.
[PUBMED](#) | [CROSSREF](#)
25. Landoni F, Maneo A, Zupardiel I, Zanagnolo V, Mangioniet C. Class I versus class III radical hysterectomy in stage IB1–IIA cervical cancer. A prospective randomized study. *Eur J Surg Oncol* 2012;38:203-9.
[PUBMED](#) | [CROSSREF](#)

26. van der Velden J, Samlal R, Schilthuis MS, Gonzalez DG, ten Kate FJ, Lammes FB. A limited role for adjuvant radiotherapy after the Wertheim/Okabayashi radical hysterectomy for cervical cancer confined to the cervix. *Gynecol Oncol* 1999;75:233-7.
[PUBMED](#) | [CROSSREF](#)
27. Sedlis A, Bundy BN, Rotman MZ, Lentz SS, Muderspach LI, Zaino RJ. A randomized trial of pelvic radiation therapy versus no further therapy in selected patients with stage IB carcinoma of the cervix after radical hysterectomy and pelvic lymphadenectomy: a Gynecologic Oncology Group study. *Gynecol Oncol* 1999;73:177-83.
[PUBMED](#) | [CROSSREF](#)
28. Derks M, van der Velden J, de Kroon CD, Nijman HW, van Lonkhuijzen LR, van der Zee AG, et al. Surgical treatment of early-stage cervical cancer: a multi-institution experience in 2124 cases in The Netherlands over a 30-year period. *Int J Gynecol Cancer* 2018;28:757-63.
[PUBMED](#) | [CROSSREF](#)
29. Tseng JH, Aloisi A, Sonoda Y, Gardner GJ, Zivanovic O, Abu-Rustum NR, et al. Less versus more radical surgery in stage IB1 cervical cancer: a population-based study of long-term survival. *Gynecol Oncol* 2018;150:44-9.
[PUBMED](#) | [CROSSREF](#)
30. ClinicalTrials.gov. A randomized phase III trial comparing radical hysterectomy and pelvic node dissection vs simple hysterectomy and pelvic node dissection in patients with low-risk early stage cervical cancer (SHAPE) [Internet]. Kingston, ON: Canadian Cancer Trials Group; 2012 [updated 2018 Nov; cited 2018 Nov 14]. Available from: <https://clinicaltrials.gov/ct2/show/NCT01658930>.
31. ClinicalTrials.gov. Conservative surgery for women with low-risk, early stage cervical cancer (ConCerv) [Internet]. Houston, TX: MD Anderson Cancer Center; 2010 [updated 2018 Mar; cited 2018 Nov 14]. Available from: <https://clinicaltrials.gov/ct2/show/NCT01048853>.
32. Zhang Q, Li W, Kanis MJ, Qi G, Li M, Yang X, et al. Oncologic and obstetrical outcomes with fertility-sparing treatment of cervical cancer: a systematic review and meta-analysis. *Oncotarget* 2017;8:46580-92.
[PUBMED](#) | [CROSSREF](#)
33. Plante M. Bulky early-stage cervical cancer (2–4 cm lesions): upfront radical trachelectomy or neoadjuvant chemotherapy followed by fertility-preserving surgery: which is the best option? *Int J Gynecol Cancer* 2015;25:722-8.
[PUBMED](#) | [CROSSREF](#)
34. Okugawa K, Kobayashi H, Sonoda K, Kaneki E, Kawano Y, Hidaka N, et al. Oncologic and obstetric outcomes and complications during pregnancy after fertility-sparing abdominal trachelectomy for cervical cancer: a retrospective review. *Int J Clin Oncol* 2017;22:340-6.
[PUBMED](#) | [CROSSREF](#)
35. Slama J, Fischerova D, Zikan M, Kocian R, Germanova A, Fruhauf F, et al. Sensitivity of follow-up methods in patients after fertility-sparing surgery for cervical cancers. *Int J Gynecol Cancer* 2017;27:147-53.
[PUBMED](#) | [CROSSREF](#)
36. Marchiole P, Bendaib M, Buenerd A, Lazlo E, Dargent D, Mathevet P. Oncological safety of laparoscopic-assisted vaginal radical trachelectomy (LARVT or Dargent's operation): a comparative study with laparoscopic-assisted vaginal radical hysterectomy (LARVH). *Gynecol Oncol* 2007;106:132-41.
[PUBMED](#) | [CROSSREF](#)
37. Diaz JP, Sonoda Y, Leita MM, Zivanovic O, Brown CL, Chi DS, et al. Oncologic outcome of fertility-sparing radical trachelectomy versus radical hysterectomy for stage IB1 cervical carcinoma. *Gynecol Oncol* 2008;111:255-60.
[PUBMED](#) | [CROSSREF](#)
38. Beiner ME, Hauspy J, Rosen B, Murphy J, Laframboise S, Nofech-Mozes S, et al. Radical vaginal trachelectomy vs. radical hysterectomy for small early stage cervical cancer: a matched case-control study. *Gynecol Oncol* 2008;110:168-71.
[PUBMED](#) | [CROSSREF](#)
39. Matsuo K, Machida H, Mandelbaum RS, Mikami M, Enomoto T, Roman LD, et al. Trachelectomy for stage IB1 cervical cancer with tumor size >2 cm: trends and characteristics in the United States. *J Gynecol Oncol* 2018;29:e85.
[PUBMED](#) | [CROSSREF](#)
40. Cao DY, Yang JX, Wu XH, Chen YL, Li L, Liu KJ, et al. Comparisons of vaginal and abdominal radical trachelectomy for early-stage cervical cancer: preliminary results of a multi-center research in China. *Br J Cancer* 2013;109:2778-82.
[PUBMED](#) | [CROSSREF](#)

41. van Gent MD, van den Haak LW, Gaarenstroom KN, Peters AA, van Poelgeest MI, Trimbos JB, et al. Nerve-sparing radical abdominal trachelectomy versus nerve-sparing radical hysterectomy in early-stage (FIGO IA2–IB) cervical cancer: a comparative study on feasibility and outcome. *Int J Gynecol Cancer* 2014;24:735–43.
[PUBMED](#) | [CROSSREF](#)
42. Li X, Li J, Wen H, Ju X, Chen X, Xia L, et al. The survival rate and surgical morbidity of abdominal radical trachelectomy versus abdominal radical hysterectomy for stage IB1 cervical cancer. *Ann Surg Oncol* 2016;23:2953–8.
[PUBMED](#) | [CROSSREF](#)
43. Guo J, Zhang Y, Chen X, Sun L, Chen K, Sheng X. Surgical and Oncologic Outcomes of Radical Abdominal Trachelectomy Versus Hysterectomy for Stage IA2-IB1 Cervical Cancer. *J Minim Invasive Gynecol*. Forthcoming 2018.
[PUBMED](#) | [CROSSREF](#)
44. Taarnhøj GA, Christensen IJ, Lajer H, Fuglsang K, Jeppesen MM, Kahr HS, et al. Risk of recurrence, prognosis, and follow-up for Danish women with cervical cancer in 2005–2013: a national cohort study. *Cancer* 2018;124:943–51.
[PUBMED](#) | [CROSSREF](#)
45. Shazly SA, Murad MH, Dowdy SC, Gostout BS, Famuyide AO. Robotic radical hysterectomy in early stage cervical cancer: a systematic review and meta-analysis. *Gynecol Oncol* 2015;138:457–71.
[PUBMED](#) | [CROSSREF](#)
46. Wang YZ, Deng L, Xu HC, Zhang Y, Liang ZQ. Laparoscopy versus laparotomy for the management of early stage cervical cancer. *BMC Cancer* 2015;15:928.
[PUBMED](#) | [CROSSREF](#)
47. Park DA, Yun JE, Kim SW, Lee SH. Surgical and clinical safety and effectiveness of robot-assisted laparoscopic hysterectomy compared to conventional laparoscopy and laparotomy for cervical cancer: a systematic review and meta-analysis. *Eur J Surg Oncol* 2017;43:994–1002.
[PUBMED](#) | [CROSSREF](#)
48. Sert BM, Boggess JF, Ahmad S, Jackson AL, Stavitzski NM, Dahl AA, et al. Robot-assisted versus open radical hysterectomy: a multi-institutional experience for early-stage cervical cancer. *Eur J Surg Oncol* 2016;42:513–22.
[PUBMED](#) | [CROSSREF](#)
49. Diver E, Hinchcliff E, Gockley A, Melamed A, Contrino L, Feldman S, et al. Minimally invasive radical hysterectomy for cervical cancer is associated with reduced morbidity and similar survival outcomes compared with laparotomy. *J Minim Invasive Gynecol* 2017;24:402–6.
[PUBMED](#) | [CROSSREF](#)
50. Wallin E, Flöter Rådestad F, Falconer H. Introduction of robot-assisted radical hysterectomy for early stage cervical cancer: impact on complications, costs and oncologic outcome. *Acta Obstet Gynecol Scand* 2017;96:536–42.
[PUBMED](#) | [CROSSREF](#)
51. Melamed A, Margul DJ, Chen L, Keating NL, Del Carmen MG, Yang J, et al. Survival after minimally invasive radical hysterectomy for early-stage cervical cancer. *N Engl J Med* 2018;379:1905–14.
[PUBMED](#) | [CROSSREF](#)
52. Ramirez PT, Frumovitz M, Pareja R, Lopez A, Vieira M, Ribeiro R, et al. Minimally invasive versus abdominal radical hysterectomy for cervical cancer. *N Engl J Med* 2018;379:1895–904.
[PUBMED](#) | [CROSSREF](#)
53. Margul DJ, Yang J, Seagle BL, Kocherginsky M, Shahabi S. Outcomes and costs of open, robotic, and laparoscopic radical hysterectomy for stage IB1 cervical cancer. *J Clin Oncol* 2018;36:5502.
[CROSSREF](#)