

Original Article



OPEN ACCESS

Received: May 24, 2018

Revised: Aug 9, 2018

Accepted: Aug 24, 2018

Correspondence to

Francesca Falcone

Department of Woman, Child, and General and Specialized Surgery, University of Campania "Luigi Vanvitelli", Largo Madonna delle Grazie 1, Naples 80138, Italy.
E-mail: francesca.falcone3@libero.it

Copyright © 2018. Asian Society of Gynecologic Oncology, Korean Society of Gynecologic Oncology

This is an Open Access article distributed under the terms of the Creative Commons Attribution Non-Commercial License (<https://creativecommons.org/licenses/by-nc/4.0/>) which permits unrestricted non-commercial use, distribution, and reproduction in any medium, provided the original work is properly cited.

ORCID iDs

Stefano Uccella 
<https://orcid.org/0000-0002-4456-0822>
Francesca Falcone 
<https://orcid.org/0000-0002-3729-2321>
Stefano Greggi 
<https://orcid.org/0000-0001-5601-5111>
Francesco Fanfani 
<https://orcid.org/0000-0003-1991-7284>
Pierandrea De Iaco 
<https://orcid.org/0000-0002-8841-6531>
Giacomo Corrado 
<https://orcid.org/0000-0002-8319-6146>
Marcello Ceccaroni 
<https://orcid.org/0000-0002-6797-4876>
Vincenzo Dario Mandato 
<https://orcid.org/0000-0001-6537-1046>

Survival in clinical stage I endometrial cancer with single vs. multiple positive pelvic nodes: results of a multi-institutional Italian study

Stefano Uccella ^{1,2} **Francesca Falcone** ^{3,4} **Stefano Greggi** ³
Francesco Fanfani ⁵ **Pierandrea De Iaco** ⁶ **Giacomo Corrado** ^{1,7}
Marcello Ceccaroni ⁸ **Vincenzo Dario Mandato** ⁹ **Stefano Bogliolo** ^{10,11}
Jvan Casarin ¹² **Giorgia Monterossi** ¹ **Ciro Pinelli** ² **Giorgia Mangili** ¹²
Gennaro Cormio ^{13,14} **Giovanni Roviglione** ⁸ **Alice Bergamini** ¹²
Anna Pesci ¹⁵ **Luigi Frigerio** ¹⁶ **Silvia Uccella** ¹⁷ **Enrico Vizza** ⁷
Giovanni Scambia ¹ **Fabio Ghezzi** ²

¹Department of Woman and Child Health, Fondazione Policlinico Gemelli, I.R.C.C.S., Catholic University of the Sacred Heart, Rome, Italy

²Department of Obstetrics and Gynecology, University of Insubria, Varese, Italy

³Department of Gynecologic Oncology Surgery, Istituto Nazionale Tumori "Fondazione G. Pascale", I.R.C.C.S., Naples, Italy

⁴Department of Woman, Child, and General and Specialized Surgery, University of Campania "Luigi Vanvitelli", Naples, Italy

⁵Department of Medicine and Ageing Sciences, G. D'Annunzio University of Chieti-Pescara, Chieti, Italy

⁶Department of General Surgery and Gynecologic Oncology Unit, Sant'Orsola Hospital, Bologna, Italy

⁷Department of Oncological Surgery, Gynecologic Oncologic Unit, "Regina Elena" National Cancer Institute, Rome, Italy

⁸Department of Obstetrics and Gynecology, Gynecologic Oncology and Minimally-Invasive Pelvic Surgery, International School of Surgical Anatomy, Sacred Heart Hospital, Negrar, Verona, Italy

⁹Unit of Obstetrics and Gynecology, Azienda USL-I.R.C.C.S. di Reggio Emilia, Reggio Emilia, Italy

¹⁰Unit of Gynecologic Cancer Surgery European Institute of Oncology, Milan, Italy

¹¹Department of Obstetrics and Gynaecology, Fondazione I.R.C.C.S. Policlinico San Matteo, Pavia, Italy

¹²Department of Gynecology and Obstetrics, I.R.C.C.S. San Raffaele Hospital, Milan, Italy

¹³Gynecologic Oncology Unit, I.R.C.C.S., National Cancer Institute "Giovanni Paolo II", Bari, Italy

¹⁴Department of Obstetrics and Gynecology, University of Bari, Bari, Italy

¹⁵Department of Pathology, Sacred Heart Hospital, Negrar, Verona, Italy

¹⁶Department of Obstetrics and Gynecology, Ospedale Papa Giovanni XXIII, Bergamo, Italy

¹⁷Department of Medicine and Surgery, Unit of Pathology, University of Insubria, Varese, Italy

ABSTRACT

Objective: To investigate survival outcomes in endometrioid endometrial cancer (EEC) patients with single vs. multiple positive pelvic lymph nodes.

Methods: We performed a retrospective evaluation of all consecutive patients with histologically proven International Federation of Gynecology and Obstetrics (FIGO) stage IIIC1 EEC who underwent primary surgical treatment between 2004 and 2014 at seven Italian gynecologic oncology referral centers. Patients with pre- or intra-operative evidence of extra-uterine disease (including the presence of bulky nodes) and patients with stage IIIC2 disease were excluded, in order to obtain a homogeneous population.

Results: Overall 140 patients met the inclusion criteria. The presence of >1 metastatic pelvic node was significantly associated with an increased risk of recurrence and mortality,

Stefano Bogliolo 
<https://orcid.org/0000-0003-2912-8676>
 Jvan Casarin 
<https://orcid.org/0000-0001-9519-1097>
 Giorgia Monterossi 
<https://orcid.org/0000-0002-7132-8068>
 Ciro Pinelli 
<https://orcid.org/0000-0003-2375-9522>
 Giorgia Mangili 
<https://orcid.org/0000-0002-8451-429X>
 Gennaro Cormio 
<https://orcid.org/0000-0001-5745-372X>
 Giovanni Roviglione 
<https://orcid.org/0000-0003-4444-5514>
 Alice Bergamini 
<https://orcid.org/0000-0002-1915-8313>
 Anna Pesci 
<https://orcid.org/0000-0003-0254-6181>
 Luigi Frigerio 
<https://orcid.org/0000-0001-9823-788X>
 Silvia Uccella 
<https://orcid.org/0000-0002-5714-7295>
 Enrico Vizza 
<https://orcid.org/0000-0001-5915-4555>
 Giovanni Scambia 
<https://orcid.org/0000-0003-2758-1063>
 Fabio Ghezzi 
<https://orcid.org/0000-0003-3949-5410>

Conflict of Interest

No potential conflict of interest relevant to this article was reported.

Author Contributions

Conceptualization: U.S., F.F., G.S., S.G., G.F.;
 Data curation: U.S., F.F., D.I.P., C.G., M.V.D.,
 B.S., C.G., R.G., B.A., F.L.; Formal analysis:
 U.S., F.F.; Investigation: U.S., F.F., G.S., F.F.,
 D.I.P., C.G., C.M., M.V.D., B.S., C.J., M.G., P.C.,
 M.G., C.G., R.G., B.A., P.A., F.L., U.S., V.E., S.G.,
 G.F.; Methodology: U.S., F.F., G.S.; Project
 administration: U.S.; Supervision: U.S., G.S.,
 S.G., G.F.; Validation: U.S., F.F., G.S., F.F., D.I.P.,
 C.G., C.M., M.V.D., B.S., C.J., M.G., P.C., M.G.,
 C.G., R.G., B.A., P.A., F.L., U.S., V.E., S.G.,
 G.F.; Visualization: U.S., F.F., G.S., F.F., D.I.P.,
 C.G., C.M., M.V.D., B.S., C.J., M.G., P.C., M.G.,
 C.G., R.G., B.A., P.A., F.L., U.S., V.E., S.G., G.F.;
 Writing - original draft: U.S., F.F.; Writing -
 review & editing: U.S., F.F., G.S.

compared to only 1 metastatic node, at both univariate (recurrence: hazard ratio [HR]=2.19; 95% confidence interval [CI]=1.2–3.99; p=0.01; mortality: HR=2.8; 95% CI=1.24–6.29; p=0.01) and multivariable analysis (recurrence: HR=1.91; 95% CI=1.02–3.56; p=0.04; mortality: HR=2.62; 95% CI=1.13–6.05; p=0.02) and it was the only independent predictor of prognosis in this subset of patients. Disease-free survival (DFS) and disease-specific survival (DSS) were significantly longer in patients with only 1 metastatic node compared to those with more than 1 metastatic node (p=0.008 and 0.009, respectively).

Conclusion: The presence of multiple metastatic nodes in stage IIIC1 EEC represents an independent predictor of worse survival, compared to only one positive node. Our data suggest that EEC patients may be categorized according to the number of positive nodes.

Keywords: Endometrial Cancer; Lymph Node Dissection; Prognosis

INTRODUCTION

Although the majority of cases of endometrial cancer with endometrioid histology are diagnosed at an early-stage and have an excellent prognosis, women with advanced-stage tumors have a significantly poorer survival [1]. The presence of lymph node metastases is one of the most important prognostic factors for endometrioid endometrial cancer (EEC) [2]. The possible role of lymph node dissection has been investigated by numerous studies in the last years [3–6], but controversy still remains regarding the indications, anatomic extent, and therapeutic value of this procedure [7,8].

The National Comprehensive Cancer Network (NCCN) Panel as well as the European Society for Medical Oncology (ESMO)-European Society of Gynaecological Oncology (ESGO)-European Society for Radiotherapy & Oncology (ESTRO) Consensus Conference on Endometrial Cancer have recently recommended a selective and risk-adapted performance of lymphadenectomy, in order to avoid systematic over-treatment [8,9]. On the other hand, omission of nodal dissection in patients at risk of lymph node metastasis may result in an inability to specifically tailor post-operative treatment. Sentinel node identification has been recently proposed as an alternative technique to reduce the morbidity of nodal dissection, maintaining the information regarding the presence of nodal spread of disease [10,11]. This new and less invasive approach is gaining increasing popularity and is progressively replacing complete nodal staging at many institutions worldwide, mainly for low- or intermediate-risk disease.

It is important to note that patients with stage IIIC EEC (according to International Federation of Gynecology and Obstetrics; FIGO) have been reported to have a variable 5-year disease-specific survival (DSS), ranging from 44% to 77%, [12–15]. These wide ranges suggest that there is considerable heterogeneity among lymph node positive patients, and that the staging system does not reflect the survival impact of all the possible prognostic variables. To date, owing to the difficulty of collecting large series of women with lymph node positive EEC, data regarding the prognostic factors in these patients are very limited [15,16].

The improvement of risk assessment in lymph node positive EEC patients, beyond the current FIGO staging definition, however, should be an argument for urgent action, given the growing implementation of sentinel lymph node (SLN) mapping. The absolute number of metastatic lymph nodes, indeed, has recently emerged as an important prognostic factor in several types of malignancies [12,17–19]. It is therefore possible that the use of SLN biopsy

alone, without a systematic pelvic and para-aortic lymphadenectomy, may not be completely adequate to capture the information regarding the real number of involved nodes.

The aim of this study was to assess whether patients with only 1 positive node have a different prognosis compared to those with >1 positive node.

MATERIALS AND METHODS

We performed a retrospective evaluation of all consecutive patients who underwent primary surgical staging for EEC at 7 Italian gynecologic oncology referral centers between January 2004 and December 2014.

The primary aim of our study was to compare patients with 1 positive pelvic node vs. those with >1 positive pelvic node in terms of survival outcomes. The relationship between other important clinical-pathologic factors and disease-free survival (DFS) and DSS was also assessed.

The Institutional Review Boards (IRB) of participating centers approved this study; all patients included in the present analysis gave written consent to data collection and to the use of personal records for health research. A standardized database was used to collect data systematically abstracted from the oncological datasets of each Institution; these are research-quality forms, which are regularly updated by trained residents in a prospective fashion.

In particular, we collected data on: patient- (age, American Society of Anesthesiologists [ASA] score), disease- (histologic grade, myometrial invasion, lymph vascular space invasion [LVSI], tumor size, cervical involvement, presence or absence of pre-operative or intra-operative evidence of extra-uterine disease, number of metastatic lymph nodes, pattern of lymph node involvement), and treatment-related characteristics (surgical approach, type of lymphadenectomy performed, adjuvant therapy). Follow-up data were gathered until the end of 2017.

All patients underwent total hysterectomy, bilateral salpingo-oophorectomy, and pelvic±para-aortic lymphadenectomy. Lymphadenectomy was performed based on standard international guidelines. The surgical procedures were performed by open surgery, laparoscopy or robotic approach, according to surgeon's discretion, institutional facilities and clinical characteristics. The anatomic extent of lymphadenectomy, however, varied based on institutional policy and patient's characteristics [20].

Only patients with histologically proven FIGO stage IIIC1 EEC at final pathology and at least 12 lymph nodes harvested were included in the present analysis.

The following patients were considered non-eligible for study inclusion: 1) non-endometrioid histologies; 2) less than 12 lymph nodes harvested; 3) FIGO stage IIIC2; 4) pre- or intra-operative evidence of extra-uterine disease (including adnexal or vaginal involvement, bulky or suspicious nodes, FIGO stage IV); and 5) patients not treated with upfront surgery.

Tumor size was evaluated by the pathologist and measured on the largest tumor diameter. For the pattern of lymph node involvement we used the same definitions as in breast cancer: a micrometastasis was defined as a single focus of metastatic disease per lymph node measuring ≤ 2 mm; a macrometastasis was defined as metastatic disease measuring

more than 2 mm; extranodal tumor extension was defined as cancer perforating the lymph node capsule and extending into the perinodal tissue [21]. All pathologic evaluations were performed by dedicated gynecologic pathologists. When the size of the lymph-node metastasis was not delineated in the pathology report and the terms ‘micrometastasis’ and ‘macrometastasis’ were not used, pathology slides were reviewed at each participating center and a determination was made based on the histopathologic re-evaluation.

1. Statistical analysis

Statistical analysis was performed with SPSS statistical software version 21.0 for Windows (IBM Corp., Armonk, NY, USA) and with STATA/IC 13.0 for Windows (StataCorp LP, College Station, TX, USA). Categorical variables were reported as absolute number and percentage. Continuous variables were reported as median and range or as mean and standard deviation (SD). DFS was calculated from the date of surgery to either the last follow-up or the date of recurrence. DSS was calculated from the date of surgery to either the last follow-up or the date of death from EEC. The relative importance of variables as independent predictors of DFS and DSS was analysed with the multivariate Cox proportional hazard regression: to correct for possible confounders, all parameters found to have a $p < 0.2$ at univariate analysis were included into the multivariable Cox regression model. Adjusted hazard ratios (HRs) and 95% confidence interval (CI) for prognostic factors were estimated.

Survival analysis for patients with 1 vs. >1 metastatic lymph node was performed. Furthermore, additional survival analyses were planned for variables, if any, which resulted independent predictors of DFS and/or DSS at multivariate Cox regression analysis. Survival rates were estimated by the Kaplan-Meier method. The log-rank test was used to compare survival curves. Patients known to be still alive or lost to follow-up at the time of analysis were censored at their last follow-up. All p -values were two-sided, and statistical significance was set at $p < 0.05$.

To correct for the possible imbalance between the group of patients with 1 vs. >1 positive node, we also repeated our evaluation with the technique of propensity score (PS) matching. The PS method allows comparisons between patient groups that are similar on all already-known confounders. The PS for an individual is defined as the probability of having been exposed to a condition based on variables measured at or before the time of treatment. To generate PS, a non-parsimonious logistic regression model that incorporated variables that predict the risk of recurrence was developed, with the presence of 1 or >1 metastatic node as the dependent variable. The choice of covariates potentially relating to the exposure arm included in the PS model was based on univariate analysis and clinical knowledge. Patient age, surgical approach, grading, LVSI, tumor diameter, myometrial invasion, and cervical involvement were included in the PS model. Women in the 1 metastatic node group were matched with women in the >1 metastatic node group in a 1:1 ratio, thereby creating pairs of cases. The success of matching was assessed for each variable using standardized differences. A successful balance was inferred if the residual imbalance for all confounders was $<10\%$.

RESULTS

A total of 140 patients met the inclusion criteria and were enrolled in the present analysis. Patient, tumor- and treatment-related characteristics are presented in detail in **Table 1**. Median patients' age was 62 years. More than one third of patients (37.9%) underwent minimally invasive surgical staging. Forty-eight patients (34.3%) underwent combined pelvic and para-aortic lymphadenectomy. The

median number of lymph nodes removed was 22 (range, 12–105), and no significant difference ($p=0.06$) was detected between open (mean \pm SD, 26.6 \pm 13.7) vs. endoscopic approach (22.8 \pm 7.6) in terms of lymph nodes harvested, although a tendency towards a higher nodal yield was observed among women who underwent open surgery. Sixty-five patients (46.4%) presented with only one positive node and 75 patients (53.6%) had more than one metastatic lymph node; these two subgroups were homogeneous for the main patient and disease characteristics (**Table 2**).

Table 1. Patient, tumor- and treatment-related characteristics

Variable	Value
Age (yr)	62 (27–83)
ASA	
1–2	104 (74.3)
3–4	36 (25.7)
Histologic grade	
1	13 (9.3)
2	55 (39.3)
3	72 (51.4)
Myometrial invasion	
<1/2	25 (17.9)
\geq 1/2	115 (82.1)
LVI	
Absent	15 (10.7)
Present	113 (80.7)
Missing	12 (8.6)
Tumor size (cm)	4.5 (1.5–9.5)
Cervical involvement	
Negative	83 (59.3)
Positive	57 (40.7)
Adnexal metastasis	
Negative	125 (89.3)
Positive	15 (10.7)
Surgical approach	
Laparoscopic/robotic	53 (37.9)
Open	87 (62.1)
Type of lymphadenectomy	
Only PLX	92 (65.7)
PLX+PALX	48 (34.3)
Harvested lymph nodes	22 (12–105)
Metastatic lymph nodes	
1	65 (46.4)
>1	75 (53.6)
Pattern of lymph node involvement	
Micrometastasis	24 (17.1)
Macrometastasis	73 (52.1)
Perinodal tissue extension	13 (9.3)
Missing	30 (21.4)
Adjuvant therapy	
None	2 (1.4)
RT alone	20 (14.3)
CT alone	44 (31.4)
Combined/sequential RT and CT	66 (47.1)
Missing	8 (5.7)
Time (months) from diagnosis to relapse	23.5 (1–173)
Sites of recurrence	
Local	17 (34.7)
Retroperitoneal	12 (24.5)
Distant*	11 (22.4)
Both local and distant*	1 (2)
Both local, retroperitoneal and distant*	2 (4.1)
Missing	6 (12.2)

(continued to the next page)

Table 1. (Continued) Patient, tumor- and treatment-related characteristics

Variable	Value
Response to relapse treatment	
Complete response	13 (26.5)
Partial response	5 (10.2)
Progressive disease	24 (48.9)
Stable disease	3 (6.1)
Missing	4 (8.2)
Status at last follow-up	
NED	82 (58.6)
AWD	11 (7.8)
DOD	30 (21.4)
DID	6 (4.3)
Missing	11 (7.8)

Values are presented as number (%) or median (range).

ASA, American Society of Anesthesiologists; AWD, alive with disease; CT, chemotherapy; DID, dead of intercurrent disease; DOD, dead of disease; LVSI, lymph vascular space invasion; NED, no evidence of disease; PALX, para-aortic lymphadenectomy; PLX, pelvic lymphadenectomy; RT, radiation therapy.

*Includes metastasis to inguinal lymph nodes, intra-peritoneal disease, or lung, liver, or bone.

Table 2. Patient, tumor- and treatment-related characteristics by number of positive nodes

Variable	Single positive node group (n=65)	Multiple positive nodes group (n=75)	p-value
Age (yr)	61.05±9.9	63.91±11	0.11
ASA			0.17
1-2	44 (67.7)	60 (80)	
3-4	21 (32.3)	15 (20)	
Histologic grade			0.59
1-2	30 (46.1)	38 (50.6)	
3	35 (53.8)	37 (49.3)	
Myometrial invasion			0.86
<1/2	12 (18.5)	13 (17.3)	
≥1/2	53 (81.5)	62 (82.7)	
LVSI			0.32
Absent	9 (13.8)	6 (8)	
Present	49 (75.4)	64 (85.3)	
Missing	7 (10.8)	5 (6.7)	
Tumor size (cm)	4.8±1.8	4.6±1.5	0.51
Cervical involvement			0.59
Negative	37 (56.9)	46 (61.3)	
Positive	28 (43.1)	29 (38.7)	
Adnexal metastasis			0.59
Negative	59 (90.8)	66 (88)	
Positive	6 (9.2)	9 (12)	
Harvested lymph nodes	24.4±10.8	26.9±15.6	0.28
Pattern of lymph node involvement			0.065
Micrometastasis	15 (23.1)	9 (12)	
Macrometastasis	28 (43.1)	45 (60)	
Perinodal tissue extension	9 (13.8)	4 (5.3)	
Missing	13 (20)	17 (22.7)	
Adjuvant therapy			0.27
None	0 (0)	2 (2.7)	
RT alone	8 (12.3)	12 (16)	
CT alone	17 (26.2)	27 (36)	
Combined/sequential RT and CT	35 (53.8)	31 (41.3)	
Missing	5 (7.7)	3 (4)	
Recurrence			0.02
No	49 (75.3)	42 (56)	
Yes	16 (24.6)	33 (44)	

Values are presented as number (%) or mean±SD.

ASA, American Society of Anesthesiologists; CT, chemotherapy; LVSI, lymph vascular space invasion; RT, radiation therapy; SD, standard deviation.

A total of 110 patients (78.5%) were treated with adjuvant chemotherapy, and all of them have been documented as having received a platinum-based regimen. In particular, 66 patients (47.1%) received combined/sequential adjuvant radiotherapy and platinum-based chemotherapy. During a median follow-up time of 31 months (range, 1–177), 49 patients (35%) experienced a relapse and 30 (21.4%) died of disease (**Table 1**). Mean DFS and DSS were 38.8 months (95% CI=32.1–45.4 months) and 41 months (95% CI=34.7–47.4 months), respectively.

At uni- and multi-variate analysis, only the presence of more than one metastatic lymph node was independently associated with both recurrence and mortality (**Tables 3 and 4**).

Multinomial logistic regression (post hoc analysis) of histopathologic characteristics predicting multiple metastatic lymph nodes is presented in **Table 5**. After multivariable adjustment for possible confounders, lymph node metastasis >2 mm in size resulted as the only independent factor associated with multiple positive nodes ($p=0.02$).

Table 3. Cox regression analysis of factors predicting recurrence

Variable	Univariate analysis		Multivariate analysis	
	HR (95% CI)	p-value	HR (95% CI)	p-value
Age (yr)				
<62	Reference		Reference	
≥62	1.71 (0.96–3.04)	0.06	1.43 (0.79–2.59)	0.23
ASA score				
1–2	Reference			
3–4	1.26 (0.65–2.46)	0.48		
Histologic grade				
1–2	Reference			
3	1.39 (0.79–2.45)	0.24		
Myometrial invasion				
<1/2	Reference			
≥1/2	1.47 (0.66–3.28)	0.34		
LVSI				
Absent	Reference			
Present	0.97 (0.35–2.72)	0.96		
Tumor size (cm)				
<4.5	Reference			
≥4.5	1.07 (0.37–3.12)	0.89		
Cervical involvement				
Negative	Reference			
Positive	1.26 (0.72–2.27)	0.41		
Adnexal metastasis				
Negative	Reference			
Positive	1.35 (0.53–3.42)	0.52		
Harvested lymph nodes				
<22	Reference			
≥22	0.78 (0.44–1.37)	0.39		
Metastatic lymph nodes				
1	Reference		Reference	
>1	2.19 (1.2–3.99)	0.01	1.91 (1.02–3.56)	0.04
Pattern of lymph node involvement				
Micrometastasis	Reference			
Macrometastasis	1.18 (0.53–2.06)	0.67		
Adjuvant therapy				
RT or CT alone	Reference		Reference	
Combined/sequential RT and CT	0.87 (0.11–6.61)	0.07	0.94 (0.12–7.27)	0.95

ASA, American Society of Anesthesiologists; CI, confidence interval; CT, chemotherapy; HR, hazard ratio; LVSI, lymph vascular space invasion; RT, radiation therapy.

Table 4. Cox regression analysis of factors predicting mortality

Variable	Univariate analysis		Multivariate analysis	
	HR (95% CI)	p-value	HR (95% CI)	p-value
Age (yr)				
<62	Reference			
≥62	1.03 (0.5–2.13)	0.91		
ASA score				
1–2	Reference			
3–4	1.01 (0.43–2.38)	0.97		
Histologic grade				
1–2	Reference			
3	0.95 (0.46–1.97)	0.9		
Myometrial invasion				
<1/2	Reference		Reference	
≥1/2	2.36 (0.71–7.79)	0.15	2.63 (0.79–8.76)	0.11
LVSI				
Absent	Reference			
Present	0.83 (0.19–3.53)	0.8		
Tumor size (cm)				
<4.5	Reference			
≥4.5	1.2 (0.57–2.54)	0.61		
Cervical involvement				
Negative	Reference			
Positive	1.02 (0.49–2.13)	0.94		
Adnexal metastasis				
Negative	Reference			
Positive	1.42 (0.43–4.69)	0.56		
Harvested lymph nodes				
<22	Reference			
≥22	1.03 (0.5–2.11)	0.93		
Metastatic lymph nodes				
1	Reference		Reference	
>1	2.8 (1.24–6.29)	0.01	2.62 (1.13–6.05)	0.02
Pattern of lymph node involvement				
Micrometastasis	Reference			
Macrometastasis	1.61 (0.54–4.77)	0.38		
Adjuvant therapy				
RT or CT alone	Reference		Reference	
Combined/sequential RT and CT	1.76 (0.83–3.73)	0.13	1.66 (0.78–3.54)	0.18

ASA, American Society of Anesthesiologists; CI, confidence interval; CT, chemotherapy; HR, hazard ratio; LVSI, lymph vascular space invasion; RT, radiation therapy.

Kaplan-Meier curves showing the association of the number of metastatic lymph nodes with the risk of relapse and death from disease are presented in **Fig. 1**. In particular, DFS was significantly longer ($p=0.008$) in patients with only 1 metastatic lymph node (mean 46.2 months; 95% CI=35.3–57.2 months) compared to those with more than one metastatic lymph node (mean 33.2 months; 95% CI=23.9–42.4 months). Similarly, patients with only one metastatic lymph node had a significantly longer DSS ($p=0.009$) compared to patients with more than one metastatic lymph node: specifically, mean DSS was 49.6 months (95% CI=39–60.2 months) for the former and 38.2 months (95% CI=29.2–47.1 months) for the latter.

The results of the PS-matched analysis are provided in the **Supplementary Table 1**. The presence of >1 metastatic node remained associated with the risk of recurrence also after propensity-matched analysis (odds ratio=2.40; 95% CI=1.09–5.30; $p=0.03$).

Table 5. Multinomial logistic regression analysis of histopathologic characteristics predicting multiple metastatic lymph nodes

Variable	OR (95% CI)	p-value
Histologic grade		
1-2	Reference	
3	0.84 (0.4-1.76)	0.65
Myometrial invasion		
<1/2	Reference	
≥1/2	1.14 (0.45-2.92)	0.77
LVSI		
Absent	Reference	
Present	1.97 (0.62-6.28)	0.24
Tumor size (cm)		
<4.5	Reference	
≥4.5	0.97 (0.44-2.11)	0.94
Cervical involvement		
Negative	Reference	
Positive	1.57 (0.74-3.32)	0.23
Adnexal metastasis		
Negative	Reference	
Positive	1.77 (0.51-6.08)	0.36
Pattern of lymph node involvement		
Micrometastasis	Reference	
Macrometastasis	3.05 (1.13-8.2)	0.02

CI, confidence interval; LVSI, lymph vascular space invasion; OR, odds ratio.

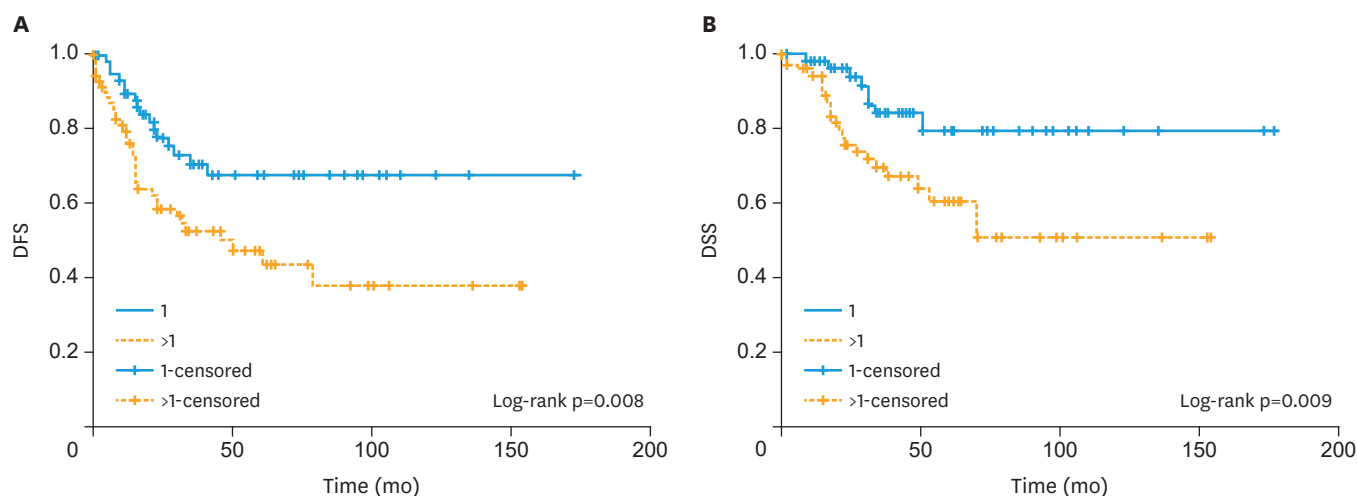


Fig. 1. Survival curves according to the number of metastatic lymph nodes. DFS, disease-free survival; DSS, disease-specific survival.

DISCUSSION

The present study shows that, when the disease is macroscopically confined to the uterus, EEC patients with multiple positive pelvic lymph nodes have a significantly worse prognosis, compared to subjects with only a single positive node. The present findings provide a deeper insight in the knowledge of EEC with pelvic lymphatic spread and demonstrate that the extension of nodal dissemination is associated with disease recurrence.

Our results appear in agreement with the observation of a wide survival range for women with stage IIIC EEC, thus suggesting a considerable heterogeneity in this subset of patients.

In this setting, an adequate risk-based stratification may allow a more accurate assessment of prognosis and should foster specific efforts to identify a more tailored treatment. The therapeutic paradigm for EEC patients with lymph node metastases has shifted in recent years to a multimodal approach including surgery, chemotherapy, and radiation therapy [22]. Due to the paucity of cases, however, there is still debate regarding the best therapeutic options in these patients. In particular, controversies exist around the possible treatment strategies for patients with lymph node metastases detected with SLN mapping and/or not submitted to systematic pelvic and para-aortic lymphadenectomy. Recently, Touhami et al. [23], have reported that the risk of metastasis in non-SLNs is 34.8% when SLN is positive, and that this incidence increases with the size of the SLN metastasis. Moreover, it has to be taken into account that the routine performance of ultrastaging on SLNs increases the detection of metastatic disease, in the form of micrometastases and isolated tumor cells, and that the best therapeutic approach in these specific circumstances is still under investigation [24]. Of note, in the present study we found that the size of lymph node metastasis (<2 mm vs. >2 mm) is not associated with disease recurrence and survival. A more specific analysis, however, revealed that the presence of macrometastases was the only independent predictor of multiple pelvic node involvement.

The main objective of our study was to define the prognostic impact of the number of pelvic metastatic nodes in patients with disease macroscopically confined to the uterus. This clinical context is that compatible with the sentinel node mapping. We also decided to exclude stage IIIC2 patients in order to avoid the possible bias of including women with higher stage disease. Considering the findings of the present analysis, it is logical to ask whether the use of SLN biopsy alone, without a pelvic and para-aortic lymphadenectomy, could allow an adequate risk-based stratification of patients with metastatic nodes and/or with lymph node metastases >2 mm in size. It is also possible to hypothesize that SLN technique and systematic lymphadenectomy could not be considered as mutually-exclusive. While sentinel node mapping has been demonstrated as a reliable tool to assess lymphatic spread both in low-risk and high-risk patients [11,25], future studies could identify a subset of cases in whom a combination of the 2 approaches may provide the best benefit to the patient.

Previous studies have indicated that lymph node ratio (defined as the ratio between the number of positive nodes and the total number of lymph nodes removed) is associated with prognosis in stage IIIC EEC [26,27]. Although these findings are consistent with the results of the present study and underline the relationship between the extent of nodal involvement and survival outcomes, we highlight that lymph node ratio is determined not only by the burden of nodal disease but also by the total number of nodes harvested. In contrast, the absolute number of positive nodes may represent a more direct and independent measure of lymph node involvement (since it is less affected by the extent of lymphadenectomy).

The retrospective design with the possible selection and reporting biases likely represents the main limitation of the present study. Nevertheless, the oncological databases from which our data have been collected, are prospectively maintained by dedicated physicians in all the Institutions involved. As a possible further limitation, it has to be considered that the anatomical extent of lymphadenectomy (i.e. pelvic±para-aortic) varied over time, depending on institutional policies and international guidelines. It should be underlined, however, that all patients included in the present analysis had at least 12 pelvic nodes harvested, and all the procedures were performed by gynecologic oncologists in oncological referral centers. Another possible limitation of the study is that the sample size was not calculate a priori. Due

to the low incidence of nodal metastases in patients with endometrioid histology, no paraaortic involvement and no macroscopic extra-uterine spread, a consecutive series of 140 patients with only pelvic node metastasis is likely to be statistically adequate for the study purposes.

Our study poses some questions that can be summarized as follows: 1) Which are the possible therapeutic implications of the finding that multiple pelvic nodal metastases in stage IIIC1 EEC portend a worse prognosis? Is this cohort of patients suitable for a more aggressive and individualized treatment? And which kind?; 2) Is it justified to perform full lymphadenectomy in patients with a positive SLN? If the positive SLN is identified at definitive histology, would a re-operation for a full lymphadenectomy be justified? These and other questions should be answered in the setting of possible future prospective multicenter trials.

In conclusion, our study provides evidence that the absolute number of metastatic pelvic nodes (1 vs. >1) is a strong independent parameter to predict disease recurrence and mortality. Moreover, our data suggest that stratifying patients with IIIC1 EEC according to the actual number of positive nodes allows a more accurate assessment of prognosis. This could represent the possible basis for better tailoring and individualization of surgical treatment and/or adjuvant therapy.

SUPPLEMENTARY MATERIAL

Supplementary Table 1

Factors associated with recurrent disease and propensity score-matched analysis

[Click here to view](#)

REFERENCES

1. Bakkum-Gamez JN, Gonzalez-Bosquet J, Laack NN, Mariani A, Dowdy SC. Current issues in the management of endometrial cancer. *Mayo Clin Proc* 2008;83:97-112.
[PUBMED](#) | [CROSSREF](#)
2. Mariani A, Webb MJ, Keeney GL, Aletti G, Podratz KC. Predictors of lymphatic failure in endometrial cancer. *Gynecol Oncol* 2002;84:437-42.
[PUBMED](#) | [CROSSREF](#)
3. ASTEC study group, Kitchener H, Swart AM, Qian Q, Amos C, Parmar MK. Efficacy of systematic pelvic lymphadenectomy in endometrial cancer (MRC ASTEC trial): a randomised study. *Lancet* 2009;373:125-36.
[PUBMED](#) | [CROSSREF](#)
4. Benedetti Panici P, Basile S, Maneschi F, Alberto Lissoni A, Signorelli M, Scambia G, et al. Systematic pelvic lymphadenectomy vs. no lymphadenectomy in early-stage endometrial carcinoma: randomized clinical trial. *J Natl Cancer Inst* 2008;100:1707-16.
[PUBMED](#) | [CROSSREF](#)
5. Todo Y, Kato H, Kaneuchi M, Watari H, Takeda M, Sakuragi N. Survival effect of para-aortic lymphadenectomy in endometrial cancer (SEPAL study): a retrospective cohort analysis. *Lancet* 2010;375:1165-72.
[PUBMED](#) | [CROSSREF](#)
6. Mariani A, Dowdy SC, Cliby WA, Haddock MG, Keeney GL, Lesnick TG, et al. Efficacy of systematic lymphadenectomy and adjuvant radiotherapy in node-positive endometrial cancer patients. *Gynecol Oncol* 2006;101:200-8.
[PUBMED](#) | [CROSSREF](#)

7. Uccella S, Podratz KC, Aletti GD, Mariani A. Lymphadenectomy in endometrial cancer. *Lancet* 2009;373:1170.
[PUBMED](#) | [CROSSREF](#)
8. Colombo N, Creutzberg C, Amant F, Bosse T, González-Martín A, Ledermann J, et al. ESMO-ESGO-ESTRO Consensus Conference on Endometrial Cancer: diagnosis, treatment and follow-up. *Ann Oncol* 2016;27:16-41.
[PUBMED](#) | [CROSSREF](#)
9. National Comprehensive Cancer Network. NCCN Clinical practice guidelines in oncology. Uterine neoplasms, Version 1.2018 [Internet]. Fort Washington, PA: National Comprehensive Cancer Network; [cited 2017 Oct 17]. Available from: https://www.nccn.org/professionals/physician_gls/pdf/uterine.pdf.
10. Ballester M, Dubernard G, Lécuru F, Heitz D, Mathevet P, Marret H, et al. Detection rate and diagnostic accuracy of sentinel-node biopsy in early stage endometrial cancer: a prospective multicentre study (SENTI-ENDO). *Lancet Oncol* 2011;12:469-76.
[PUBMED](#) | [CROSSREF](#)
11. Zahl Eriksson AG, Ducie J, Ali N, McGree ME, Weaver AL, Bogani G, et al. Comparison of a sentinel lymph node and a selective lymphadenectomy algorithm in patients with endometrioid endometrial carcinoma and limited myometrial invasion. *Gynecol Oncol* 2016;140:394-9.
[PUBMED](#) | [CROSSREF](#)
12. Chan JK, Kapp DS, Cheung MK, Osann K, Shin JY, Cohn D, et al. The impact of the absolute number and ratio of positive lymph nodes on survival of endometrioid uterine cancer patients. *Br J Cancer* 2007;97:605-11.
[PUBMED](#) | [CROSSREF](#)
13. Creasman WT, Odicino F, Maisonneuve P, Quinn MA, Beller U, Benedet JL, et al. Carcinoma of the corpus uteri. FIGO 26th annual report on the results of treatment in gynecological cancer. *Int J Gynaecol Obstet* 2006;95 Suppl 1:S105-43.
[PUBMED](#) | [CROSSREF](#)
14. American Cancer Society. Survival by stage of endometrial cancer [Internet]. Atlanta, GA: American Cancer Society; 2016 Feb 29 [cited 2016 Sep 10]. Available from: <https://www.cancer.org/cancer/endometrialcancer/detailedguide/endometrial-uterine-cancer-survival-rates>.
15. Turan T, Ureyen I, Duzguner I, Ozkaya E, Tasci T, Karalok A, et al. Analysis of patients with stage IIIC endometrial cancer. *Int J Gynecol Cancer* 2014;24:1033-41.
[PUBMED](#) | [CROSSREF](#)
16. Fujimoto T, Nanjyo H, Nakamura A, Yokoyama Y, Takano T, Shoji T, et al. Para-aortic lymphadenectomy may improve disease-related survival in patients with multipositive pelvic lymph node stage IIIC endometrial cancer. *Gynecol Oncol* 2007;107:253-9.
[PUBMED](#) | [CROSSREF](#)
17. Hatoum HA, Jamali FR, El-Saghir NS, Musallam KM, Seoud M, Dimassi H, et al. Ratio between positive lymph nodes and total excised axillary lymph nodes as an independent prognostic factor for overall survival in patients with nonmetastatic lymph node-positive breast cancer. *Ann Surg Oncol* 2009;16:3388-95.
[PUBMED](#) | [CROSSREF](#)
18. Rossi CR, Mocellin S, Pasquali S, Pilati P, Nitti D. N-ratio: a novel independent prognostic factor for patients with stage-III cutaneous melanoma. *Ann Surg Oncol* 2008;15:310-5.
[PUBMED](#) | [CROSSREF](#)
19. Zhang MR, Xie TH, Chi JL, Li Y, Yang L, Yu YY, et al. Prognostic role of the lymph node ratio in node positive colorectal cancer: a meta-analysis. *Oncotarget* 2016;7:72898-907.
[PUBMED](#) | [CROSSREF](#)
20. Gregg S, Franchi M, Aletti G, Biglia N, Ditto A, Fagotti A, et al. Management of endometrial cancer in Italy: a national survey endorsed by the Italian Society of Gynecologic Oncology. *Int J Surg* 2014;12:1038-44.
[PUBMED](#) | [CROSSREF](#)
21. Rosen PP, Saigo PE, Braun DW, Weathers E, Fracchia AA, Kinne DW. Axillary micro- and macrometastases in breast cancer: prognostic significance of tumor size. *Ann Surg* 1981;194:585-91.
[PUBMED](#) | [CROSSREF](#)
22. SGO Clinical Practice Endometrial Cancer Working Group, Burke WM, Orr J, Leitao M, Salom E, Gehrig P, et al. Endometrial cancer: a review and current management strategies: part I. *Gynecol Oncol* 2014;134:385-92.
[PUBMED](#) | [CROSSREF](#)
23. Touhami O, Trinh XB, Gregoire J, Sebastianelli A, Renaud MC, Grondin K, et al. Predictors of non-sentinel lymph node (non-SLN) metastasis in patients with sentinel lymph node (SLN) metastasis in endometrial cancer. *Gynecol Oncol* 2015;138:41-5.
[PUBMED](#) | [CROSSREF](#)

24. St. Clair CM, Eriksson AG, Ducie JA, Jewell EL, Alektiar KM, Hensley ML, et al. Low-volume lymph node metastasis discovered during sentinel lymph node mapping for endometrial carcinoma. *Ann Surg Oncol* 2016;23:1653-9.
[PUBMED](#) | [CROSSREF](#)
25. Ducie JA, Eriksson AG, Ali N, McGree ME, Weaver AL, Bogani G, et al. Comparison of a sentinel lymph node mapping algorithm and comprehensive lymphadenectomy in the detection of stage IIIC endometrial carcinoma at higher risk for nodal disease. *Gynecol Oncol* 2017;147:541-8.
[PUBMED](#) | [CROSSREF](#)
26. Fleming ND, Soliman PT, Westin SN, dos Reis R, Munsell M, Klopp AH, et al. Impact of lymph node ratio and adjuvant therapy in node-positive endometrioid endometrial cancer. *Int J Gynecol Cancer* 2015;25:1437-44.
[PUBMED](#) | [CROSSREF](#)
27. Polterauer S, Khalil S, Zivanovic O, Abu-Rustum NR, Hofstetter G, Concin N, et al. Prognostic value of lymph node ratio and clinicopathologic parameters in patients diagnosed with stage IIIC endometrial cancer. *Obstet Gynecol* 2012;119:1210-8.
[PUBMED](#) | [CROSSREF](#)