

## Original Article



# Prognostic impact of reduced tumor-free margin distance on long-term survival in FIGO stage IB/II vulvar squamous cell carcinoma

Leonardo Micheletti ,<sup>1</sup> Mario Preti ,<sup>1</sup> Viviana Cintolesi ,<sup>1</sup>  
Elisabetta Corvetto ,<sup>2</sup> Silvana Privitera ,<sup>3</sup> Eleonora Palmese ,<sup>1</sup>  
Chiara Benedetto <sup>1</sup>

<sup>1</sup>Department of Obstetrics and Gynecology, Sant'Anna Hospital, University of Torino, Turin, Italy

<sup>2</sup>Department of Surgical Sciences, Institute of Obstetrics and Gynecology, University of Cagliari, Cagliari, Italy

<sup>3</sup>Department of Pathology and Cytology of Female Cancer, Childhood Cancer, and Rare Cancers, AOU Città della Salute e della Scienza, Turin, Italy

## OPEN ACCESS

**Received:** Dec 8, 2017

**Revised:** Mar 31, 2018

**Accepted:** Apr 3, 2018

### Correspondence to

Leonardo Micheletti

Department of Obstetrics and Gynecology, St. Anna Hospital, University of Torino,  
Via Ventimiglia 3, 10126 Turin, Italy.  
E-mail: michelettileonardo@gmail.com

**Copyright** © 2018. Asian Society of  
Gynecologic Oncology, Korean Society of  
Gynecologic Oncology

This is an Open Access article distributed  
under the terms of the Creative Commons  
Attribution Non-Commercial License (<https://creativecommons.org/licenses/by-nc/4.0/>)  
which permits unrestricted non-commercial  
use, distribution, and reproduction in any  
medium, provided the original work is properly  
cited.

### ORCID iDs

Leonardo Micheletti   
<https://orcid.org/0000-0003-0240-3615>

Mario Preti   
<https://orcid.org/0000-0002-1573-3114>

Viviana Cintolesi   
<https://orcid.org/0000-0001-7262-3387>

Elisabetta Corvetto   
<https://orcid.org/0000-0001-8661-2902>

Silvana Privitera   
<https://orcid.org/0000-0003-2753-1314>

Eleonora Palmese   
<https://orcid.org/0000-0002-3922-041X>

Chiara Benedetto   
<https://orcid.org/0000-0003-1514-4771>

<https://ejgo.org>

## ABSTRACT

**Objective:** We aimed to identify the minimum tumor-free margin distance conferring long-term oncological safety in patients diagnosed with International Federation of Gynecology and Obstetrics (FIGO) stage IB/II vulvar squamous cell carcinoma (VSCC).

**Methods:** This was a retrospective cohort study in patients with stage IB/II VSCC treated at a single institution in Turin, Italy. The main aim was to identify the minimum tumor-free margin distance that confers oncological safety in early-stage VSCC. Patients were divided in groups according to tumor-free histological margin distance to compare survival outcomes. Overall survival (OS), disease-specific survival (DSS), and recurrence rate (RR) were estimated by the Kaplan-Meier method for the newly proposed and the currently recommended 8 mm margin cut-off. Log-rank test was used to compare survival between groups.

**Results:** One hundred and fourteen patients met the study criteria. Median age was 68 years and median follow-up was 80 months. The minimum margin distance that conferred long-term oncological safety was 5 mm. OS, DSS were significantly lower in the <5 mm group when compared with the ≥5 mm group ( $p=0.002$  and  $p=0.033$ , respectively) although no difference in RR was observed between groups. Analysis at the 8-mm cut-off indicated there is no difference in OS, DSS, or RR between groups.

**Conclusion:** FIGO stage IB/II VSCC patients' prognosis is affected by margin distance. Long-term survival is significantly reduced in patients with tumor-free margins <5 mm, even in the absence of lymph node metastasis. Thus, these patients should be offered further surgical or adjuvant treatment.

**Keywords:** Vulvar Neoplasms; Margins of Excision; Prognosis

## INTRODUCTION

Vulvar squamous cell carcinoma (VSCC) is a rare malignancy with an incidence of 1–2 per 100,000 women-years [1,2] in women younger than age 50 years, rising to as much as 13 per 100,000 women-years in women older than 85 years [2]. Traditionally, the surgical treatment

### Funding

Viviana Cintolesi is supported by a research fellowship from the Department of Surgical Sciences at the University of Turin, Italy.

### Conflict of Interest

No potential conflict of interest relevant to this article was reported.

### Author Contributions

Conceptualization: M.L., B.C.; Data curation: M.L., P.M., C.E., P.E.; Formal analysis: C.V., C.E.; Investigation: M.L., P.M., C.V., C.E.; Methodology: M.L., P.M., B.C.; Project administration: M.L., C.V., C.E.; Resources: M.L., P.M., P.S., B.C.; Software: C.V.; Supervision: M.L., B.C.; Validation: P.M., C.V., C.E., P.S.; Visualization: M.L., P.M.; Writing - original draft: C.V.; Writing - review & editing: M.L., P.M., C.V., C.E., P.S., P.E., B.C.

for early-stage VSCC was a complete resection of the tumor lesion with at least 2 cm tumor-free margins [3] with or without unilateral or bilateral inguino-femoral lymphadenectomy, depending on tumor size and location [4-6]. However, in the last decade, there have been efforts to limit the morbidity and psychological effects of radical surgery while maintaining good oncological control. The current consensus is to achieve a surgical margin >1 cm with a histological tumor-free margin  $\geq 8$  mm in early-stage VSCC [3,7-10], although there has been growing criticism on the conflicting data available on the role of margin distance on VSCC recurrence and overall survival (OS) [11-16]. This lack of consensus is clearly demonstrated in the recommendations of German, U.S. and European vulvar cancer treatment guidelines. In Germany, expert consensus of the Deutsche Gesellschaft für Gynäkologie und Geburtshilfe (DGGG) and Deutsche Krebsgesellschaft (DKG) guidelines recommend a minimum tumor-free margin of 3 mm on histological examination [17], whereas in the U.S., the National Comprehensive Cancer Network (NCCN) guidelines recommend tumor-free margins of 1-2 cm in early-stage VSCC [18]. Finally, the European Society of Gynecological Oncology (ESGO) advises to consider narrow margin in aims to preserve key structures such as the clitoris or anus [16].

Most studies in the literature have mixed disease stage cohorts (i.e., positive and negative nodal disease combined in a single cohort), mixed treatment approaches (i.e., lymphadenectomy vs. sentinel lymph node biopsy or both) or may lack long-term follow-up. Thus, they do not provide specific information on the effect of margin distance on long-term survival in early-stage, node negative VSCC. In the only published study of early-stage VSCC, Woelber et al. [15] found no significant impact of tumor-free margin distance on recurrence rate (RR) at the 8-mm margin cut-off, although with a median follow-up of 35.1 months, this study does not provide information on the effects of margin distance on long-term survival in the stage IB/II VSCC subgroup. Therefore, the main aim of this study was to identify a minimum tumor-free margin cut-off that provides long-term oncological safety in early-stage, node negative VSCC patients.

## MATERIALS AND METHODS

This was a retrospective cohort study. Clinical records of patients diagnosed with primary invasive, keratinizing VSCC from 1981 to 2014 at St. Anna Hospital, were reviewed. Patients with bowenoid or basaloid squamous cell carcinoma on histology were excluded. Patients with International Federation of Gynecology and Obstetrics (FIGO) (2009) stages IB/II [19], who had a radical total or partial vulvectomy or a wide local excision of the tumor, with negative margins, known histological margin distance, bilateral inguino-femoral lymphadenectomy with negative lymph nodes were included in the analysis. Patients who only had a sentinel lymph node biopsy were excluded from the study. Among the 569 patients treated in our clinic in that period, 114 met the study criteria. All 114 patients underwent bilateral inguino-femoral lymphadenectomy and were operated by the same surgeon. Evaluation of tumor-free margin distance was performed by 2 pathologists on hematoxylin and eosin stained slides. The presence of lichen sclerosus as a peri-tumoral lesion was recorded. The study was approved by the Institutional Review Board of the Sant'Anna Hospital, University of Turin in Italy.

### 1. Primary and secondary outcomes

The primary aim was to identify the minimum tumor-free margin distance that confers long-term oncological safety in patients diagnosed with early-stage VSCC (FIGO IB/II), treated with

vulvectomy plus bilateral lymphadenectomy. For this, a preliminary analysis was performed on tumor-free margin distance and its effect on long-term survival. The secondary outcome was to compare OS, disease-specific survival (DSS) and RR at the minimum margin cut-off, in order to compare survival outcomes to those observed at the recommended 8 mm margin cut-off. For this, the cohort (n=114) was divided into <5 mm and  $\geq 5$  mm margins (which corresponds to the minimal margin-distance cut-off found in the preliminary analysis) and later, the same cohort (n=114) was divided into <8 and  $\geq 8$  mm, which corresponds to the minimum histologic margin distance recommended in the literature [3,7-10].

## 2. Topographic classification of vulvar recurrences

The localization of the tumor and local recurrences were recorded. For a precise anatomical localization of the lesion, the vulva was divided into 4 areas delimited by an imaginary horizontal line passing through the superior border of the hymen (i.e., anterior and posterior lesion) and by a vertical line from the clitoris to the anus (i.e., right or left lesion). An ipsi-regional vulvar recurrence was considered to be a vulvar cancerous lesion that developed on the same vulvar area with respect to the location of the primary VSCC. A non ipsi-regional vulvar recurrence was considered to be a vulvar cancerous lesion that developed on a different vulvar area with respect to the location of the initially treated primary VSCC [17]. All patients' records contained a detailed drawing of the tumor's location in relation to the vulvar anatomy, while most patients' files also contained a Polaroid photograph of the vulvar tumor taken at the time of diagnosis.

## 3. Statistical analysis

Patients' age, body mass index, tumor size, tumor invasion depth, tumor-free margin distance, number of inguino-femoral lymph nodes removed and clinical follow-up data were recorded and compared between groups with unpaired t-test or Mann-Whitney test. Time to VSCC recurrence and corresponding treatment received was also recorded.

In the preliminary analysis, margin distance was treated as a continuous and categorical variable, as previously reported in the literature [15], with aims to identify the minimum margin distance that conferred long-term oncological safety in terms of OS. Once the minimum margin distance was identified (5 mm, see results section and **Supplementary Figs. 1-9**) and the patient cohort was divided according to margin distance at the 5 mm and 8 mm cut-off to assess the effect of margin distance on OS, DSS, and RR. OS, DSS, and RR were estimated by the Kaplan-Meier method. Log-rank test was used to compare the survival curves at the < cut-off and  $\geq$  cut-off. In OS, an event was defined as death by advanced vulvar cancer or death by any cause, while in DSS an event was defined as death by vulvar cancer. Patients with no events at the time of their last follow-up were considered censored. The effect of margin status on patient survival was further evaluated with Fisher's exact test. Statistical analysis was performed with GraphPad Prism version 6 (GraphPad Software, La Jolla, CA, USA). Differences were significant at  $p < 0.05$ .

# RESULTS

One hundred and fourteen patients met the study criteria. Mean age of VSCC patients at diagnosis was 68 years (median 69 years, range 35–89 years). Patients underwent either a total radical vulvectomy (n=46) or partial vulvectomy (n=68) plus bilateral inguino-femoral lymphadenectomy with triple incisions (n=114), complete removal of inguino-femoral lymph

nodes with sparing of the femoral fascia [20]. All patients had negative lymph nodes on histopathological examination. None of the patients received adjuvant treatment following primary VSCC surgery. Vulvar recurrences were treated surgically, whereas patients who developed metastatic disease received adjuvant treatment. Mean length of follow-up was 89 months (median 80 months, range 5–273 months), whereas 71% of patients in this cohort had periodical clinical follow-up documented for at least 90 months.

From the 114 patients analyzed, 46 (40%) developed vulvar recurrences (3 of which developed concomitant metastatic disease), 18 died of vulvar cancer, 5 died of other malignancies (1 of breast cancer, 2 of ovarian cancer, and 2 of lung cancer) and 7 died of cancer-unrelated causes during the follow-up period. Overall, vulvar RR at 2, 5, and 7 years post-surgery was 4%, 13%, and 31%, respectively. Ipsi-regional recurrences were recorded in 18 out of 46 patients (39%), while non ipsi-regional recurrences were observed in 28 out of 46 patients (61%). Median time from surgery to ipsi-regional or non ipsi-regional recurrences was 17 and 59 months, respectively. Median time from first recurrence to death by VSCC was 17 months (range 1–133 months,  $n=18$ ). Ipsi-regional recurrences were associated with a significantly higher disease-specific mortality when compared with non ipsi-regional recurrences (hazard ratio [HR]=6.28; 95% confidence interval [CI]=2.04–19.4;  $p=0.001$ , log-rank test, **Supplementary Fig. 1**). Further analysis revealed no association between the presence of peri-tumoral lichen sclerosis lesions reported within the margin of resection ( $n=59$ ) and VSCC RR ( $p=0.44$ , Fisher's exact test).

OS at 2, 5, and 7 years was 95%, 86%, and 78%. DSS was 96%, 90%, and 84% at 2, 5, and 7 years following surgical treatment of the primary tumor. Median survival of patients that died from VSCC was 44 months (range 13–158 months,  $n=18$ ).

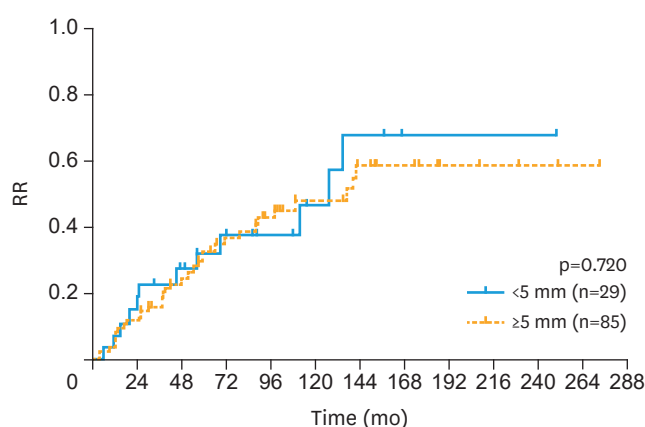
### 1. Minimum tumor-free margin distance

Preliminary analysis at 8 different tumor-free margin cut-offs (3–10 mm) indicates that 5 mm is the minimum margin distance that confers oncological safety in terms of long-term patient survival. There is a significant decrease in OS at the 3–5 mm margin cut-offs (**Supplementary Figs. 2, 3, 4**). Furthermore, there is a striking difference in OS at the 5-mm cut-off when comparing the  $<5$  mm and  $\geq 5$  mm groups ( $p=0.002$ , log-rank test, **Supplementary Fig. 4**). No difference in long-term OS was evident at the 6–10 mm margin cut-offs (**Supplementary Figs. 5, 6, 7, 8, 9**).

### 2. Effect of margin distance in RR and mortality

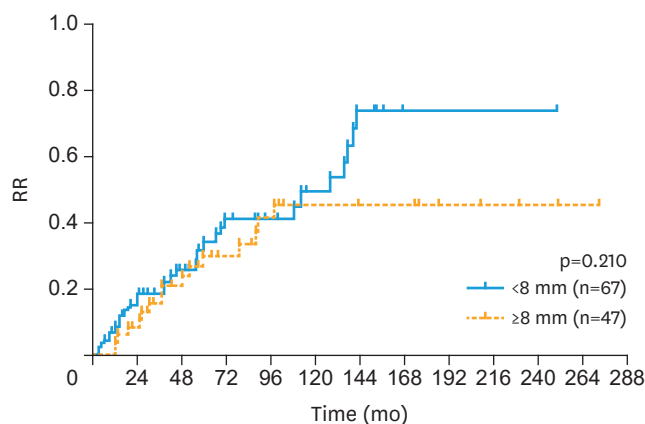
RR did not differ between groups at the 5-mm margin cut-off (**Fig. 1**), nor was evident at the recommended 8 mm margin cut-off (**Fig. 2**). The incidence of ipsi-regional recurrence lesions was similar between the  $<5$  mm and  $\geq 5$  mm margin groups (41% vs. 38%, respectively). Although disease-specific mortality was high in patients with  $<5$  mm surgical margins who developed ipsi-regional recurrences (4/5 or 80%), formal statistical analysis was not possible due to the small the sample size.

OS was significantly lower in the  $<5$  mm group when compared with the  $\geq 5$  mm margin group ( $p=0.002$ ; HR=2.92; 95% CI=1.25–6.83, log-rank test). Furthermore, 5-year DSS was 88% for the  $<5$  mm margin group and 91% for the  $\geq 5$  mm margin group ( $p=0.033$ ; HR=3.27; 95% CI=1.09–9.79, log-rank test, **Fig. 3**). Differences in OS and DSS were not evident when the cohort was divided at the 8-mm margin cut-off (**Supplementary Fig. 7 and Fig. 4**, respectively).



Patients at risk								
Margins <5 mm	29	21	17	11	9	6	4	2
Margins ≥5 mm	85	71	50	34	26	18	12	3

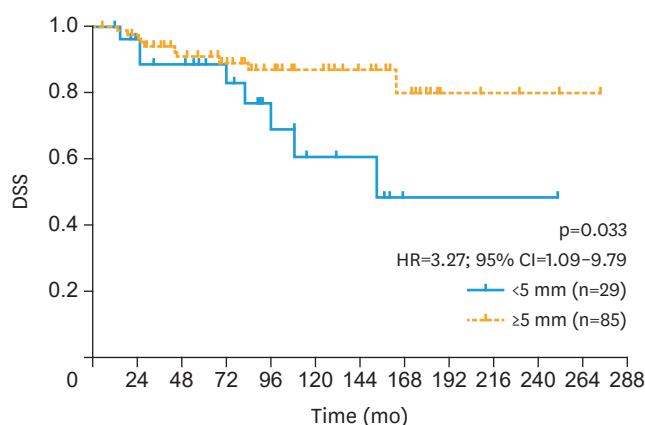
**Fig. 1.** RR in patients with tumor-free surgical margins <5 mm (n=29) or ≥5 mm (n=85), following surgical treatment for stage IB/II (FIGO 2009) VSCC. Number of patients at risk is provided at the bottom of the figure. Log-rank test was used to compare curves among groups. FIGO, International Federation of Gynecology and Obstetrics; RR, recurrence rate; VSCC, vulvar squamous cell carcinoma.



Patients at risk								
Margins <8 mm	67	52	39	25	19	12	6	2
Margins ≥8 mm	47	40	29	20	16	11	10	3

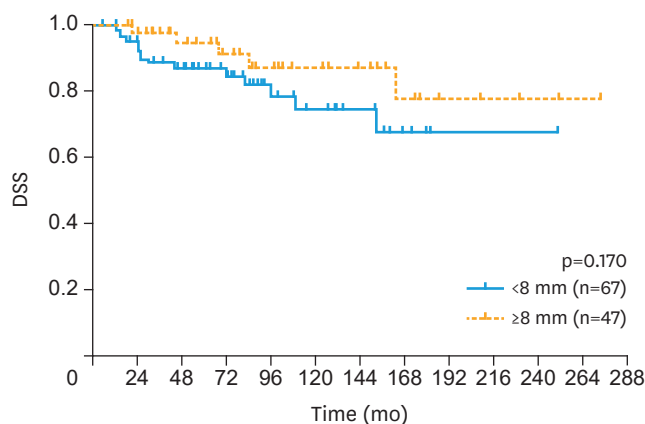
**Fig. 2.** RR in patients with tumor-free surgical margins <8 mm (n=67) or ≥8 mm (n=47), following surgical treatment for stage IB/II (FIGO 2009) VSCC. Number of patients at risk is provided at the bottom of the figure. Log-rank test was used to compare curves among groups. FIGO, International Federation of Gynecology and Obstetrics; RR, recurrence rate; VSCC, vulvar squamous cell carcinoma.

Patients with histopathological margins <5 mm, who developed at least one local vulvar recurrence had a 7-fold increase in mortality when compared to patients who also developed at least one local vulvar recurrence but had histopathological margins ≥5 mm (p=0.018, odds ratio [OR]=7.14; 95% CI=1.39–35.1, Fisher's exact test). The increased risk of mortality in patients with at least one local vulvar recurrence was not observed between groups at the 8 mm margin cut-off (p>0.99, Fisher's exact test). Clinical and pathological data comparison between groups at the 5 mm cut-off and 8 mm cut-off can be found in **Table 1** and **Supplementary Table 1**, respectively.



Patients at risk								
Margins <5 mm	29	25	22	16	10	7	6	2
Margins ≥5 mm	85	78	61	48	35	27	20	3

**Fig. 3.** DSS in patients with tumor-free surgical margins <5 mm (n=29) or ≥5 mm (n=85), following surgical treatment for stage IB/II (FIGO 2009) VSCC. Number of patients at risk is provided at the bottom of the figure. Log-rank test was used to compare survival curves among groups. CI, confidence interval; DSS, disease-specific survival; FIGO, International Federation of Gynecology and Obstetrics; HR, hazard ratio; VSCC, vulvar squamous cell carcinoma.



Patients at risk								
Margins <8 mm	67	60	48	38	24	17	13	2
Margins ≥8 mm	47	43	34	26	20	16	13	3

**Fig. 4.** DSS in patients with tumor-free surgical margins <8 mm (n=67) or ≥8 mm (n=47), following surgical treatment for stage IB/II (FIGO 2009) VSCC. Number of patients at risk is provided at the bottom of the figure. Log-rank test was used to compare survival curves among groups. DSS, disease-specific survival; FIGO, International Federation of Gynecology and Obstetrics; VSCC, vulvar squamous cell carcinoma.

## DISCUSSION

Surgery is the cornerstone of treatment for primary VSCC [21-24] and for the treatment of loco-regional vulvar recurrences [21,23,25], while VSCC prognosis is mainly determined by disease stage, lymph node status, age and tumor-related features [21]. Current data in the literature regarding a minimum oncologically safe margin distance, are contradictory [21]. In the case of early-stage, node-negative VSCC, there is limited knowledge on prognostic factors for recurrence and long-term survival. In this study, we show that tumor-free margin distance is clinically relevant from a treatment point of view, with a significant effect on prognosis.



**Table 1.** Clinical and pathological patient data

Clinical data	Total (n=114)	Tumor-free margins		p-value
		< 5 mm (n=29)	≥ 5 mm (n=85)	
Age (yr)	68 (35–89)	72 (39–85)	68 (35–89)	0.61*
FIGO 2009				
Stage IB	104 (90)	26 (87)	78 (92)	-
Stage II	11 (10)	4 (13)	7 (8)	-
Tumor location				
Midline	42 (37)	14 (48)	28 (33)	-
Lateral	72 (63)	15 (52)	57 (77)	
Tumor focality				
Unifocal	102 (89)	26 (90)	76 (89)	-
Multifocal	12 (11)	3 (10)	9 (11)	
Vulvar treatment				
Partial vulvectomy	68 (60)	20 (69)	48 (56)	-
Total vulvectomy	46 (40)	9 (31)	37 (44)	
Tumor diameter (mm)	18 (5–60)	18 (7–38)	18 (5–60)	0.74*
Depth of Invasion (mm)	4 (2–20)	5 (2–20)	4 (2–12)	0.18†
No. Lymph nodes removed‡	18 (7–33)	18 (9–29)	18 (7–33)	0.65†
Time to first recurrence§ (mo)	40 (3–142)	45 (6–135)	40 (3–142)	0.85*

Values are presented as number (%) or median (range).

FIGO, International Federation of Gynecology and Obstetrics.

\*Unpaired t-test; †Mann-Whitney test; ‡Refers to the number of lymph nodes resected bilaterally; §Refers to a vulvar cancerous lesion that developed following surgical treatment of the primary tumor.

The data indicate that a histological margin of 5 mm is the minimum distance required to ensure oncological safety and long-term survival in patients with lymph node-negative, FIGO stage IB/II VSCC. Our data also indicate that margin distance has no significant impact on RR, in agreement with previous reports in the literature [11,13,15,26]. However, there is clear evidence that margin distance <5 mm has a significant impact on long-term survival, increasing VSCC mortality by a 3-fold, when compared with the ≥5 mm margin group. The median survival of patients that developed recurrences and died from vulvar cancer was 44 months, which illustrates the importance of long-term follow-up in VSCC patients.

It is commonly thought that node-negative VSCC has a good prognosis, with 5-year survival rates ranging from 70%–96% [24,25,27]. In our study of 114 FIGO (2009) [19] stage IB/II VSCC patients, 5-year OS was 86% for the whole cohort, in agreement with the literature. However, survival changed dramatically when the sample was divided into groups according to tumor-free minimum margin distance <5 mm or ≥5 mm. Thus, the data indicate that surgical treatment of early-stage, node negative VSCC is not always curative and highlights the importance of surgical margins where approximately 1 in 4 patients with histological margins <5 mm will eventually die from VSCC.

Time from treatment to recurrence and the prognosis of a vulvar recurrences is influenced by the location of the local vulvar recurrence and not by the presence of lichen sclerosus within the surgical margin. Classification of recurrences was a difficult task, as there is no current consensus in the literature with regards to the definition of local VSCC recurrence or a 'de novo' tumor when considering: 1) the time elapsed from surgical treatment and 2) the location of the new lesion (i.e., adjacent to surgical scar vs. remote lesion vs. skin bridge lesion) [21]. Maggino et al. [28] defined a recurrence as a malignant lesion that develops at least 6 months following VSCC treatment with curative intent, while Preti et al. [29] defined it as a malignant lesion that develops 1 month following VSCC treatment. Most authors agree the majority of recurrences develop by 2 years following surgery while recurrences that develop after 2 years following primary treatment could be defined as 'de novo' tumors [3,25].

In our cohort, recurrence patterns differed significantly according to the location of the lesion with respects to the primary VSCC. Patients who present with ipsi-regional vulvar recurrences tend to develop earlier and more aggressive lesions when compared with the non ipsi-regional recurrence group. This observation was previously described by Rouzier et al. [30] in a cohort of 215 VSCC patients, although the study included different criteria of loco-regional distance from primary VSCC site, patients with mix stages, positive lymph nodes and positive margins.

The lack of difference in RR between margin groups at the 5-mm margin cut-off results puzzling in the face of such significant effect in survival. A possible explanation is that patients with smaller margin distances develop more aggressive recurrences. The notion of a 'more aggressive' recurrence affecting the <5 mm margin group is supported by our findings, as patients in the <5 mm margin group who developed a recurrence were 7 times more likely to die from VSCC when compared with patients who developed local recurrences in the  $\geq 5$  mm margin group. This is perhaps associated to the peri-tumoral stromal inflammation left in situ following the surgical removal of the tumor, which in time may contribute to the malignant progression of the remaining tissue [31] and to the development of local and metastatic disease [32].

To the best of our knowledge, this is the first report on the impact of margin distance on long-term survival in early-stage, node-negative VSCC. Although retrospective in nature, this study presents a homogenous patient sample, with similar VSCC prognoses and long-term clinical surveillance; a single surgeon performing all procedures in a single-center with a systematic and standardized staging of the groin [20] (i.e., total, bilateral lymphadenectomy) with histological confirmation of a negative node status. Thus, we believe this study provides robust evidence of the effect of margin distance on the long-term survival of patients with lymph node-negative, FIGO stage IB/II VSCC.

In conclusion, long-term patient survival in early-stage, lymph node negative VSCC is significantly affected by tumor-free margin distance at the 5-mm cut-off. Patients treated for early-stage VSCC with margins <5 mm have a significantly higher mortality than patients with larger tumor-free margin distance and should therefore be offered further surgical or adjuvant treatment. Future prospective studies are needed to identify optimal adjuvant treatments and to assess their effect on long-term survival in early-stage VSCC.

## SUPPLEMENTARY MATERIALS

### Supplementary Table 1

Clinical and pathological data comparison between groups at the 8 mm margin cut-off

[Click here to view](#)

### Supplementary Fig. 1

Disease-specific survival according to the location of the vulvar recurrence.

[Click here to view](#)



### Supplementary Fig. 2

Overall survival at the 3 mm margin cut-off.

[Click here to view](#)

### Supplementary Fig. 3

Overall survival at the 4 mm margin cut-off.

[Click here to view](#)

### Supplementary Fig. 4

Overall survival at the 5 mm margin cut-off.

[Click here to view](#)

### Supplementary Fig. 5

Overall survival at the 6 mm margin cut-off.

[Click here to view](#)

### Supplementary Fig. 6

Overall survival at the 7 mm margin cut-off.

[Click here to view](#)

### Supplementary Fig. 7

Overall survival at the 8 mm margin cut-off.

[Click here to view](#)

### Supplementary Fig. 8

Overall survival at the 9 mm margin cut-off.

[Click here to view](#)

### Supplementary Fig. 9

Overall survival at the 10 mm margin cut-off.

[Click here to view](#)

## REFERENCES

1. Saraiya M, Watson M, Wu X, King JB, Chen VW, Smith JS, et al. Incidence of in situ and invasive vulvar cancer in the US, 1998–2003. *Cancer* 2008;113:2865-72.  
[PUBMED](#) | [CROSSREF](#)
2. Baandrup L, Varbo A, Munk C, Johansen C, Frisch M, Kjaer SK. In situ and invasive squamous cell carcinoma of the vulva in Denmark 1978–2007-a nationwide population-based study. *Gynecol Oncol* 2011;22:45-9.  
[PUBMED](#) | [CROSSREF](#)

3. de Hullu JA, Hollema H, Lolkema S, Boezen M, Boonstra H, Burger MP, et al. Vulvar carcinoma. The price of less radical surgery. *Cancer* 2002;95:2331-8.  
[PUBMED](#) | [CROSSREF](#)
4. Hopkins MP, Reid GC, Morley GW. The surgical management of recurrent squamous cell carcinoma of the vulva. *Obstet Gynecol* 1990;75:1001-5.  
[PUBMED](#)
5. Weikel W, Schmidt M, Steiner E, Knapstein PG, Koelbl H. Surgical therapy of recurrent vulvar cancer. *Am J Obstet Gynecol* 2006;195:1293-302.  
[PUBMED](#) | [CROSSREF](#)
6. Buchler DA, Kline JC, Tunca JC, Carr WF. Treatment of recurrent carcinoma of the vulva. *Gynecol Oncol* 1979;8:180-4.  
[PUBMED](#) | [CROSSREF](#)
7. Chan JK, Sugiyama V, Pham H, Gu M, Rutgers J, Osann K, et al. Margin distance and other clinico-pathologic prognostic factors in vulvar carcinoma: a multivariate analysis. *Gynecol Oncol* 2007;104:636-41.  
[PUBMED](#) | [CROSSREF](#)
8. de Hullu JA, van der Avoort IA, Oonk MH, van der Zee AG. Management of vulvar cancers. *Eur J Surg Oncol* 2006;32:825-31.  
[PUBMED](#) | [CROSSREF](#)
9. Hacker NF, Berek JS, Lagasse LD, Nieberg RK, Leuchter RS. Individualization of treatment for stage I squamous cell vulvar carcinoma. *Obstet Gynecol* 1984;63:155-62.  
[PUBMED](#)
10. Heaps JM, Fu YS, Montz FJ, Hacker NF, Berek JS. Surgical-pathologic variables predictive of local recurrence in squamous cell carcinoma of the vulva. *Gynecol Oncol* 1990;38:309-14.  
[PUBMED](#) | [CROSSREF](#)
11. Groenen SM, Timmers PJ, Burger CW. Recurrence rate in vulvar carcinoma in relation to pathological margin distance. *Int J Gynecol Cancer* 2010;20:869-73.  
[PUBMED](#) | [CROSSREF](#)
12. Woelber L, Choschzick M, Eulenburg C, Hager M, Jaenicke F, Giesekeing F, et al. Prognostic value of pathological resection margin distance in squamous cell cancer of the vulva. *Ann Surg Oncol* 2011;18:3811-8.  
[PUBMED](#) | [CROSSREF](#)
13. Baiocchi G, Mantoan H, de Brot L, Badiglian-Filho L, Kumagai LY, Faloppa CC, et al. How important is the pathological margin distance in vulvar cancer? *Eur J Surg Oncol* 2015;41:1653-8.  
[PUBMED](#) | [CROSSREF](#)
14. Viswanathan AN, Pinto AP, Schultz D, Berkowitz R, Crum CP. Relationship of margin status and radiation dose to recurrence in post-operative vulvar carcinoma. *Gynecol Oncol* 2013;130:545-9.  
[PUBMED](#) | [CROSSREF](#)
15. Woelber L, Griebel LF, Eulenburg C, Sehoul J, Jueckstock J, Hilpert F, et al. Role of tumour-free margin distance for loco-regional control in vulvar cancer-a subset analysis of the Arbeitsgemeinschaft Gynäkologische Onkologie CaRE-1 multicenter study. *Eur J Cancer* 2016;69:180-8.  
[PUBMED](#) | [CROSSREF](#)
16. Oonk MH, Planchamp F, Baldwin P, Bidzinski M, Brännström M, Landoni F, et al. European Society of Gynaecological Oncology guidelines for the management of patients with vulvar cancer. *Int J Gynecol Cancer* 2017;27:832-7.  
[PUBMED](#) | [CROSSREF](#)
17. Schnürch HG, Ackermann S, Alt CD, Barinoff J, Böing C, Dannecker C, et al. Diagnosis, therapy and follow-up care of vulvar cancer and its precursors. Guideline of the DGGG and DKG (S2k-Level, AWMF Registry Number 015/059, November 2015. *Geburtshilfe Frauenheilkd* 2016;76:1035-49.  
[PUBMED](#) | [CROSSREF](#)
18. Koh WJ, Greer BE, Abu-Rustum NR, Campos SM, Cho KR, Chon HS, et al. Vulvar cancer, version 1.2017, NCCN Clinical Practice Guidelines in Oncology. *J Natl Compr Canc Netw* 2017;15:92-120.  
[PUBMED](#) | [CROSSREF](#)
19. Pecorelli S. Revised FIGO staging for carcinoma of the vulva, cervix, and endometrium. *Int J Gynaecol Obstet* 2009;105:103-4.  
[PUBMED](#) | [CROSSREF](#)
20. Micheletti L, Bogliatto F, Massobrio M. Groin lymphadenectomy with preservation of femoral fascia: total inguinofemoral node dissection for treatment of vulvar carcinoma. *World J Surg* 2005;29:1268-76.  
[PUBMED](#) | [CROSSREF](#)

21. Nooij LS, Brand FA, Gaarenstroom KN, Creutzberg CL, de Hullu JA, van Poelgeest MI. Risk factors and treatment for recurrent vulvar squamous cell carcinoma. *Crit Rev Oncol Hematol* 2016;106:1-13.  
[PUBMED](#) | [CROSSREF](#)
22. Hacker NF, Eifel PJ, van der Velden J. Cancer of the vulva. *Int J Gynaecol Obstet* 2012;119 Suppl 2:S90-6.  
[PUBMED](#) | [CROSSREF](#)
23. Berek JS, Hacker NF. Berek and Hacker's gynecologic oncology. 6th ed. Philadelphia, PA: Wolters Kluwer Health/Lippincott Williams & Wilkins; 2015.
24. Gadducci A, Cionini L, Romanini A, Fanucchi A, Genazzani AR. Old and new perspectives in the management of high-risk, locally advanced or recurrent, and metastatic vulvar cancer. *Crit Rev Oncol Hematol* 2006;60:227-41.  
[PUBMED](#) | [CROSSREF](#)
25. Coulter J, Gleeson N. Local and regional recurrence of vulvar cancer: management dilemmas. *Best Pract Res Clin Obstet Gynaecol* 2003;17:663-81.  
[PUBMED](#) | [CROSSREF](#)
26. Nooij LS, van der Slot MA, Dekkers OM, Stijnen T, Gaarenstroom KN, Creutzberg CL, et al. Tumour-free margins in vulvar squamous cell carcinoma: does distance really matter? *Eur J Cancer* 2016;65:139-49.  
[PUBMED](#) | [CROSSREF](#)
27. Gonzalez Bosquet J, Magrina JF, Gaffey TA, Hernandez JL, Webb MJ, Cliby WA, et al. Long-term survival and disease recurrence in patients with primary squamous cell carcinoma of the vulva. *Gynecol Oncol* 2005;97:828-33.  
[PUBMED](#) | [CROSSREF](#)
28. Maggino T, Landoni F, Sartori E, Zola P, Gadducci A, Alessi C, et al. Patterns of recurrence in patients with squamous cell carcinoma of the vulva. A multicenter CTF Study. *Cancer* 2000;89:116-22.  
[PUBMED](#) | [CROSSREF](#)
29. Preti M, Ronco G, Ghiringhello B, Micheletti L. Recurrent squamous cell carcinoma of the vulva: clinicopathologic determinants identifying low risk patients. *Cancer* 2000;88:1869-76.  
[PUBMED](#) | [CROSSREF](#)
30. Rouzier R, Haddad B, Plantier F, Dubois P, Pelisse M, Paniel BJ. Local relapse in patients treated for squamous cell vulvar carcinoma: incidence and prognostic value. *Obstet Gynecol* 2002;100:1159-67.  
[PUBMED](#)
31. Balkwill F, Charles KA, Mantovani A. Smoldering and polarized inflammation in the initiation and promotion of malignant disease. *Cancer Cell* 2005;7:211-7.  
[PUBMED](#) | [CROSSREF](#)
32. Mendes SO, dos Santos M, Peterle GT, Maia Lde L, Stur E, Agostini LP, et al. HIF-1alpha expression profile in intratumoral and peritumoral inflammatory cells as a prognostic marker for squamous cell carcinoma of the oral cavity. *PLoS One* 2014;9:e84923.  
[PUBMED](#) | [CROSSREF](#)