



Hypomagnesemia as a prognostic marker of ischemic stroke

Hyun Ryu, MD¹; Shin Young Ahn, MD, PhD²; Chi Kyung Kim, MD, PhD³;
Kyungmi Oh, MD, PhD³; Jung Hoon Han, MD³; Dae Wook Lee, MD⁴;
Soo Hyun Kim, MD⁵; Han Jun Kim, MD³

¹Anseong Public Health Center, Anseong, Korea

²Division of Nephrology, Department of Internal Medicine, Korea University Guro Hospital, Korea University College of Medicine, Seoul, Korea

³Department of Neurology, Korea University Guro Hospital, Korea University College of Medicine, Seoul, Korea

⁴Department of Physical Medicine and Rehabilitation, Korea University Guro Hospital, Korea University College of Medicine, Seoul, Korea

⁵Department of Ophthalmology, Korea University Anam Hospital, Korea University College of Medicine, Seoul, Korea

ORIGINAL ARTICLE

Received: November 12, 2021

Revised: January 31, 2022

Accepted: February 16, 2022

Corresponding Author:

Han Jun Kim, MD

Department of Neurology, Korea University Guro Hospital, Korea University College of Medicine, 148 Gurodong-ro, Guro-gu, Seoul 08308, Korea

Tel: +82-2-2626-1250

Fax: +82-2-2626-2249

E-mail: khj89222@naver.com

Hyun Ryu, Shin Young Ahn, and Chi Kyung Kim equally contributed to this study.

Background: Hypomagnesemia is associated with stroke severity and increased in-hospital mortality in patients with acute ischemic stroke. This study aimed to assess whether serum magnesium concentration could predict functional outcomes of patients with acute ischemic stroke.

Methods: A total of 1,006 patients with acute ischemic stroke were analyzed. A serum magnesium level <1.6 mEq/L was defined as hypomagnesemia. Poor functional outcome was defined as a 3-month modified Rankin Scale (mRS) score ≥ 4 . Multivariate logistic regression models were used to determine the effect of hypomagnesemia on the prognosis of ischemic stroke. Furthermore, patients were grouped according to severity and type of stroke. Within each group, subgroup analyses and interaction analyses were performed to determine whether the effect of hypomagnesemia on functional outcomes was still valid under different clinical conditions.

Results: The adjusted odds ratio (OR) for poor 3-month mRS in patients with hypomagnesemia was 2.15 [95% confidence interval (CI), 1.16–3.98; $P=0.015$]. Hypomagnesemia was significantly associated with poor 3-month functional outcomes in patients with minor stroke (Initial National Institutes of Health Stroke Scale [NIHSS] score <5 : adjusted OR, 4.20; 95% CI, 1.67–10.59; $P=0.002$). A significant interaction ($P=0.047$) was also observed between hypomagnesemia and the severity of the initial NIHSS. Although there was no significant interaction ($P=0.053$), hypomagnesemia was significantly associated with poor functional outcomes in the cardioembolic stroke group (adjusted OR, 3.41; 95% CI, 1.24–9.41; $P=0.018$).

Conclusion: Hypomagnesemia was a strong prognostic marker of poor functional outcome in certain subgroups, especially in patients with mild stroke severity and cardioembolic stroke.

Keywords: Magnesium; Ischemic stroke; Hypomagnesemia

INTRODUCTION

Magnesium plays an essential role in numerous enzymatic processes, cellular metabolism, and neuronal function [1]. Although some studies have discovered the potential of magnesium as a neuroprotective agent [2-4], human trials have not demonstrated the efficacy of intravenous (IV) magnesium administration. In the Intravenous Magnesium Efficacy in Stroke (IMAGES) trial, IV infusion did not have a statistically significant effect 12 hours after stroke onset [5]. Additionally, in the Field Administration of Stroke Therapy-Magnesium (FAST-MAG) trial, prehospital use of magnesium sulfate in acute ischemic stroke showed no improvement in disability outcomes at 90 days [6].

The effect of serum magnesium on the acute phase of ischemic stroke has also been studied. A prospective study has revealed that hypomagnesemia is associated with a higher incidence of ischemic stroke [7]. In addition, decreased serum magnesium levels at the time of admission can independently increase in-hospital mortality in patients with ischemic stroke [8]. Meanwhile, a higher serum magnesium concentration is related to a lower risk of stroke severity (National Institutes of Health Stroke Scale [NIHSS] ≥ 10) and mortality [9]. With increasing interest in the disability burden from ischemic stroke, we investigated the association between hypomagnesemia and functional outcomes expressed using the modified Rankin Scale (mRS). We also evaluated the interactions of hypomagnesemia with other risk factors, such as stroke severity, stroke type, age, and history of hypertension.

METHODS

Study population

This was a single-center cross-sectional study. From January 2014 to July 2017, 1,549 patients with acute ischemic stroke or transient ischemic attack (TIA) who were admitted to the Department of Neurology of Korea University Guro Hospital were enrolled. The diagnosis of ischemic stroke was made based on the patients' history, clinical manifestations, and neuroimaging results (computed tomography or magnetic resonance imaging) according to World Health Organization-defined criteria. The exclusion criteria were as follows: (1) diagnosis of TIA and (2) patients with acute ischemic stroke with previous mRS ≥ 2 , excluding 282 patients from the study population. A total of 1,133 patients were included in this analysis. Furthermore, we excluded patients with missing data for the 3-month mRS, initial NIHSS score, serum magnesium concentration at admission, and additional clinical data such as body weight, height, serum triglyceride

(TG), low-density lipoprotein cholesterol (LDL-C), and high-density lipoprotein cholesterol (HDL-C) (flow chart of patient selection; Fig. 1). Finally, 1,006 patients were selected as the study population eligible for analysis.

Data collection

The following baseline information was collected: demographics of the patients, vascular risk factors, stroke severity (NIHSS score), laboratory test results, and stroke-related information. The demographic data of the patients included age, sex, weight, and height. Vascular risk factors for ischemic stroke include a history of hypertension, diabetes mellitus (DM), coronary heart disease, atrial fibrillation, and current smoking status. Information on these factors was gathered through interviews with the patient or the patient's family if the patient could not communicate. Current smoking status was defined as having smoked one or more cigarettes per day in the year before the onset of stroke. The demographics data of the patients and vascular risk factors obtained from the interviews were cross-matched with hospital records and laboratory data.

A series of routine laboratory investigations, including systolic blood pressure, diastolic blood pressure, total cholesterol concentration, serum TG concentration, serum HDL-C concentration, and serum LDL-C concentration, were performed. Blood pressure was measured when the patient arrived at the hospital. Blood samples used for all laboratory tests were taken within 24 hours of admission. Laboratory tests, including serum magnesium concentration, were performed in the Department of Laboratory Medi-

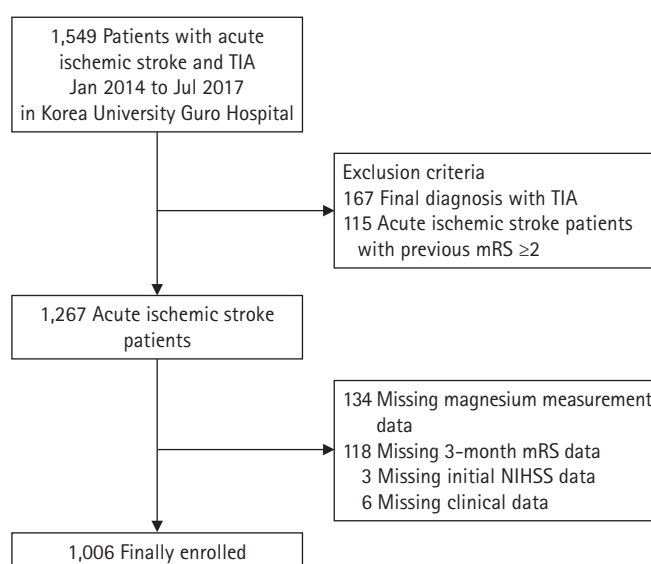


Fig. 1. Flowchart of patients' selection. TIA, transient ischemic attack; mRS, modified Rankin Scale; NIHSS, National Institutes of Health Stroke Scale.

cine, Korea University Guro Hospital. Serum magnesium was measured with an atomic absorption spectrometer using the xylyl blue reaction, according to the manufacturer's instructions, at the Department of Laboratory Medicine, Korea University Guro Hospital.

Definitions and interpretation

Referring to previous studies, the criterion for hypomagnesemia was defined as < 1.6 mEq/L (0.8 mmol/L) [10]. The putative cause of ischemic stroke was classified according to the Trial of Org 10172 in Acute Stroke Treatment (TOAST) classification. The NIHSS score was used to describe the severity of the ischemic stroke. The initial NIHSS, defined as NIHSS, was documented by physicians as soon as the patient arrived at the emergency department before receiving specific treatment and was used for analysis. The mRS score was evaluated 3 months after discharge. The 3-month mRS was divided into two groups based on whether the patient was able to walk without assistance: good outcome ($\text{mRS} < 4$) and poor outcome ($\text{mRS} \geq 4$) [11].

Statistical analysis

Baseline demographical, laboratory data, and TOAST classification of the two groups were compared according to whether the serum magnesium level is less than 1.6 mEq/L or more than 1.6 mEq/L. Continuous variables were analyzed using the independent t-test and Mann-Whitney *U*-test, whereas the frequency of categorical variables was compared using the chi-square test. To assess the effect of hypomagnesemia on poor 3-month mRS scores, a multivariable logistic regression analysis was performed. Age, hypertension, DM, history of ischemic stroke, current smoking, and total cholesterol level were included as traditional prognostic factors for ischemic stroke. Potential confounders, such as the initial NIHSS score and cardioembolic stroke, were also included according to the researcher's agreement. In addition, we performed an interaction analysis between hypomagnesemia and potential modifiers to assess whether the effect of hypomagnesemia on the 3-month mRS was affected by stroke severity (initial NIHSS score), cardioembolic stroke, age, or a history of hypertension. Subgroup analyses were performed using a multivariate-adjusted model stratified by initial NIHSS score (< 5 vs. ≥ 5), whether the type of ischemic stroke was cardioembolic, age (< 65 vs. ≥ 65 years), and history of hypertension. To assess unmeasured confounding effects [12] *E*-values were calculated for the odds ratios (ORs) of hypomagnesemia in the minor and cardioembolic stroke subgroups. All *P*-values were two-tailed with a significance level of 0.05. All statistical analyses were performed using IBM SPSS ver. 20.0 (IBM Corp., Armonk, NY, USA).

RESULT

First, the baseline characteristics of 1,006 patients were analyzed. The mean age of the study population was 66 ± 12.9 years. Of these, 651 (64.7%) were male. The median initial NIHSS score was 3 (interquartile range, 1–6). The number of patients with poor functional outcome (3-month mRS ≥ 4) was 149 (14.8%). The baseline characteristics of the patients divided into two groups according to serum magnesium levels are presented in Table 1. The proportion of men was lower in patients with hypomagnesemia (< 1.6 mEq/L) than in patients with higher serum magnesium levels (≥ 1.6 mEq/L). Patients with hypomagnesemia had significantly more conventional risk factors such as hypertension, DM, and atrial fibrillation. Regarding laboratory data, patients with hypomagnesemia had lower total cholesterol and LDL-C levels. Lastly, in the hypomagnesemia group, 27.8% of ischemic stroke cases were due to cardioembolism, while only 16.3% had a cardioembolic stroke in the other group.

Second, the effect of hypomagnesemia on the functional outcomes of ischemic stroke was estimated using univariate and multivariate logistic regression analyses (Table 2). When analyzed using a univariate logistic regression model, the odds of poor 3-month mRS were 2.29-fold higher in patients with hypomagnesemia than in those without hypomagnesemia (95% confidence interval [CI], 1.45–3.62; $P < 0.001$). With adjustment, hypomagnesemia was significantly associated with an increased risk of poor 3-month functional outcomes compared with higher serum magnesium levels (OR, 2.15; 95% CI, 1.16–3.98; $P = 0.015$). Age, hypertension, and initial NIHSS score were also significantly associated with poor 3-month mRS scores.

Third, subgroup and interaction analyses were performed to assess the effects of hypomagnesemia on functional outcomes in different clinical situations (Table 3). The patients were divided into two groups according to the independent variables mentioned above: minor (NIHSS score < 5) and moderate-severe (NIHSS score ≥ 5) stroke, age < 65 and ≥ 65 years, and presence of hypertension. Although cardioembolism was not an independently significant variable in the adjusted analysis, it was considered because patients with hypomagnesemia had more atrial fibrillation than those without hypomagnesemia [13] presumed to have a confounding relationship with serum magnesium level. In the analysis of the four groups divided by initial NIHSS and magnesium levels, the difference between the ORs of the two magnesium groups was more significant in the minor stroke group (adjusted OR, 1[ref] to 4.20) than in the moderate-severe stroke group (adjusted OR, 16.27–21.58). This is further supported by a significant interaction between hypomagnesemia and

Table 1. Baseline characteristics of 1,006 patients with acute ischemic stroke according to serum magnesium

Variable	Serum magnesium <1.6 mEq/L	Serum magnesium ≥1.6 mEq/L	P-value
Age (yr)	66±15	67±13	0.306
Sex (male)	64 (55.7)	587 (65.9)	0.031 ^{a)}
Hypertension	79 (68.7)	510 (57.2)	0.019 ^{a)}
Diabetes mellitus	60 (52.2)	230 (25.8)	<0.001 ^{a)}
History of ischemic stroke	11 (11.2)	87 (9.8)	0.946
History of atrial fibrillation	31 (27.0)	152 (17.1)	0.010 ^{a)}
Current smoker	28 (24.3)	276 (31.0)	0.145
SBP (mmHg)	147±29	150±28	0.365
DBP (mmHg)	86±14	87±16	0.311
Total cholesterol (mg/dL)	164 (141–200)	186 (158–215)	<0.00 ^{a)}
TG (mg/dL)	101 (78–157)	110 (78–158)	0.893
HDL-C (mg/dL)	42 (35–50)	42 (35–50)	0.396
LDL-C (mg/dL)	91 (72–123)	111 (88–134)	<0.001 ^{a)}
Initial NIHSS	3 (1–7)	3 (1–6)	0.334
TOAST classification			0.019 ^{a)}
Large artery atherosclerosis	34 (29.6)	297 (33.3)	
Cardioembolism	32 (27.8)	145 (16.3)	
Small vessel occlusion	18 (15.7)	221 (24.8)	
Others	5 (4.3)	37 (4.2)	
Undetermined	26 (22.6)	191 (21.4)	

Values are presented as mean±standard deviation, number (%), or median (interquartile range).

SBP, systolic blood pressure; DBP, diastolic blood pressure; TG, triglycerides; HDL-C, high-density lipoprotein cholesterol; LDL-C, low-density lipoprotein cholesterol; NIHSS, National Institutes of Health Stroke Scale; TOAST, Trial of Org 10172 in Acute Stroke Treatment.

^{a)}Indicates a *P*-value of <0.05.

Table 2. Crude and adjusted ORs of poor 3-month mRS using univariate and multiple logistic regression analyses

Variable	Crude OR (95% CI)	P-value	Adjusted OR (95% CI)	P-value
Hypomagnesemia (serum magnesium <1.6 mEq/L)	2.29 (1.45–3.62)	<0.001	2.15 (1.16–3.98)	0.015 ^{a)}
Age (yr)	1.08 (1.06–1.10)	<0.001	1.07 (1.04–1.09)	<0.001 ^{a)}
Sex (male)	0.81 (0.56–1.15)	0.234	1.42 (0.85–2.39)	0.180
Hypertension (yes)	2.14 (1.45–3.15)	<0.001	1.95 (1.17–3.26)	0.011 ^{a)}
Diabetes mellitus (yes)	1.30 (0.90–1.88)	0.168	1.18 (0.72–1.93)	0.507
History of ischemic stroke (yes)	1.55 (0.92–2.62)	0.103	0.98 (0.49–1.94)	0.942
Current smoker (yes)	0.64 (0.43–0.97)	0.034	1.25 (0.70–2.22)	0.447
10-Unit increment in total cholesterol (mg/dL)	0.94 (0.9–0.99)	0.009	1.02 (0.95–1.06)	0.955
Initial NIHSS	1.31 (1.26–1.36)	<0.001	1.32 (1.26–1.38)	<0.001 ^{a)}
Cardioembolism (TOAST)	3.14 (2.13–4.62)	<0.001	0.83 (0.47–1.49)	0.534

OR, odds ratio; mRS, modified Rankin Scale; CI, confidence interval; NIHSS, National Institutes of Health Stroke Scale; TOAST, Trial of Org 10172 in Acute Stroke Treatment.

^{a)}Indicates a *P*-value of <0.05.

the severity of the initial NIHSS score ($P = 0.047$). The E-value of the minor stroke/hypomagnesemia group was 7.87 for the point estimate and 2.73 for the CI. Similarly, hypomagnesemia was significantly associated with poor functional outcome only in the cardioembolic stroke group (adjusted OR, 3.41; 95% CI, 1.24–9.41; $P = 0.018$). The E-value was 6.28 for the point estimate and 1.79 for the CI. The interaction analysis between hypomagne-

mia and cardioembolism showed a tendency toward significance ($P = 0.053$). Furthermore, the association between hypomagnesemia and poor 3-month mRS was significant in patients with a history of hypertension (adjusted OR, 4.42; 95% CI, 1.99–9.80; $P < 0.001$) and in older patients (≥ 65 years) (adjusted OR, 8.11; 95% CI, 3.38–19.48; $P \leq 0.001$).

Table 3. The adjusted OR of poor 3-month mRS for hypomagnesemia: subgroup analysis and interactive analysis

Variable	Serum magnesium ≥ 1.6 mEq/L		Serum magnesium < 1.6 mEq/L		P-value of interaction term
	Adjusted OR (95% CI)	P-value	Adjusted OR (95% CI)	P-value	
Initial NIHSS (dichotomized)					0.047 ^{a)}
Minor (< 5)	1 (Ref)		4.20 (1.67–10.59)	0.002	
Moderate-severe (≥ 5)	16.27 (9.39–28.19)	< 0.001	21.58 (9.68–48.15)	< 0.001	
Cardioembolism (TOAST)					0.053
No	1 (Ref)		1.44 (0.67–3.10)	0.357	
Yes	0.62 (0.32–1.21)	0.161	3.41 (1.24–9.41)	0.018	
Hypertension					0.461
No	1 (Ref)		1.37 (0.35–5.37)	0.651	
Yes	1.82 (1.06–3.13)	0.031	4.42 (1.99–9.80)	< 0.001	
Age (dichotomized)					0.753 ^{b)}
< 65 yr	1 (Ref)		2.68 (0.78–8.97)	0.120	
≥ 65 yr	3.84 (2.03–7.26)	< 0.001	8.11 (3.38–19.48)	< 0.001	

In all analyses, the same variables in Table 2 were included in the adjustment except for the stratification variable.

OR, odds ratio; mRS, modified Rankin Scale; CI, confidence interval; NIHSS, National Institutes of Health Stroke Scale; TOAST, Trial of Org 10172 in Acute Stroke Treatment.

^{a)}Interaction between hypomagnesemia and severity of the initial NIHSS score dichotomized into minor (< 5) and moderate-severe (≥ 5); ^{b)}Interaction between hypomagnesemia and age group dichotomized into < 65 and ≥ 65 years.

DISCUSSION

In our study, hypomagnesemia was associated with a higher risk of poor 3-month mRS scores, suggesting the role of magnesium as a prognostic marker in acute ischemic stroke. Furthermore, hypomagnesemia showed a stronger relationship with poor functional outcomes in certain subgroups of ischemic stroke, especially mild stroke and cardioembolic stroke.

In moderate-to-severe stroke, the initial severity of the stroke is estimated to have a major contribution to the outcome [14]. However, in minor stroke, clinical situations, such as early neurological deterioration, are related to the outcome [15], and together with other risk factors, the serum magnesium level could affect the course of the disease through several physiological actions. Hypomagnesemia deteriorates endothelial stability by inducing oxidative stress and promoting an inflammatory response [16]. Moreover, in a study of coronary artery disease, hypomagnesemia was shown to increase thrombus formation [17]. In addition, magnesium is involved in local blood pressure regulation by inducing vasodilatation [18]. In this context, hypomagnesemia could aggravate the ischemic lesion itself and perhaps the collateral circulation, thus contributing to neurological deterioration in patients with minor stroke.

Among the subtypes of ischemic stroke, cardioembolic cerebral infarction has a poor prognosis [19–21]. Our results showed that patients with cardioembolic stroke, particularly those with low serum magnesium levels, had worse outcomes. Although the effect

of serum magnesium concentration on the prognosis of cardioembolic stroke has not been fully established, its effects on cardiac function have been well studied [13]. As an essential cofactor for the Na-K ATP pump, magnesium is involved in the transport of sodium and potassium across the cell membrane [22]. Dysfunction of this pump in a low magnesium environment can disturb the regulation of myocardial excitability. A previous study showed that low magnesium concentration could increase sinus node automaticity [23]. Hypomagnesemia can also increase the dose required to control the rate of atrial fibrillation [24]. Since hypomagnesemia induces and exacerbates atrial fibrillation, it can also increase the frequency of early recurrent embolization, which is one of the most important factors that worsen cardioembolic stroke [25]. According to a recent study, hypomagnesemia also negatively influences ischemic lesions in the acute stage. In this study for patients who received IV thrombolytic therapy, patients with hemorrhagic transformation (HT) have significantly lower serum magnesium levels than those without HT [26]. Since HT is inherently more frequent in cardioembolic stroke, concomitant hypomagnesemia worsens the prognosis.

This study had some limitations. First, as this was an observational cross-sectional retrospective study, a causal relationship between hypomagnesemia and a poor prognosis of ischemic stroke could not be established. The study population was selected based on inclusion criteria during recruitment, and follow-up of patients after discharge was carried out thoroughly. Second, this study was conducted in a single center. Therefore, multiple cen-

ter-based studies are needed to confirm the association between hypomagnesemia and functional outcome of ischemic stroke in the general population.

Our study demonstrates the diagnostic utility of hypomagnesemia in predicting poor functional outcomes in patients with acute ischemic stroke. In addition, the results were particularly pronounced in specific patient groups, such as those with minor and cardioembolic strokes. In future studies with magnesium as a neuroprotective agent, it may be necessary to design a more specific patient population.

ARTICLE INFORMATION

Ethics statement

The study protocol was approved by the Institutional Review Board of the Korea University Medical Center, Guro Hospital (IRB No. 2011GR0218). The requirement of informed consent was waived.

Conflict of interest

No potential conflict of interest relevant to this article.

ORCID

Hyun Ryu	https://orcid.org/0000-0002-5052-2128
Shin Young Ahn	https://orcid.org/0000-0002-6844-0614
Chi Kyung Kim	https://orcid.org/0000-0002-0423-7297
Kyungmi Oh	https://orcid.org/0000-0002-7304-0308
Jung Hoon Han	https://orcid.org/0000-0002-5991-4726
Dae Wook Lee	https://orcid.org/0000-0003-4604-9603
Soo Hyun Kim	https://orcid.org/0000-0003-0056-3113
Han Jun Kim	https://orcid.org/0000-0003-4044-7897

Author contributions

Conceptualization: SYA, CKK. Data curation: DWL, SHK, HR. Formal analysis: HR, CKK, DWL, SHK. Methodology: CKK, SYA, HR. Project administration: KMO. Visualization: SHK, DWL, JHH. Writing—original draft: HR, CKK, SYA. Writing—review & editing: HJK, JHH, CKK, KMO.

REFERENCES

1. Jahnhen-Dechent W, Ketteler M. Magnesium basics. *Clin Kidney J* 2012;5(Suppl 1):i3-14.
2. Fawcett WJ, Haxby EJ, Male DA. Magnesium: physiology and pharmacology. *Br J Anaesth* 1999;83:302-20.
3. Marinov MB, Harbaugh KS, Hoopes PJ, Pikus HJ, Harbaugh RE. Neuroprotective effects of preischemia intraarterial magnesium sulfate in reversible focal cerebral ischemia. *J Neurosurg* 1996;85:117-24.
4. Yang Y, Li Q, Ahmad F, Shuaib A. Survival and histological evaluation of therapeutic window of post-ischemia treatment with magnesium sulfate in embolic stroke model of rat. *Neurosci Lett* 2000;285:119-22.
5. Muir KW, Lees KR, Ford I, Davis S; Intravenous Magnesium Efficacy in Stroke (IMAGES) Study Investigators. Magnesium for acute stroke (Intravenous Magnesium Efficacy in Stroke trial): randomised controlled trial. *Lancet* 2004;363:439-45.
6. Saver JL, Starkman S, Eckstein M, Stratton SJ, Pratt FD, Hamilton S, et al. Prehospital use of magnesium sulfate as neuroprotection in acute stroke. *N Engl J Med* 2015;372:528-36.
7. Ohira T, Peacock JM, Iso H, Chambless LE, Rosamond WD, Folsom AR. Serum and dietary magnesium and risk of ischemic stroke: the Atherosclerosis Risk in Communities Study. *Am J Epidemiol* 2009;169:1437-44.
8. You S, Zhong C, Du H, Zhang Y, Zheng D, Wang X, et al. Admission low magnesium level is associated with in-hospital mortality in acute ischemic stroke patients. *Cerebrovasc Dis* 2017;44:35-42.
9. Feng P, Niu X, Hu J, Zhou M, Liang H, Zhang Y, et al. Relationship of serum magnesium concentration to risk of short-term outcome of acute ischemic stroke. *Blood Press* 2013;22:297-301.
10. Weisinger JR, Bellorín-Font E. Magnesium and phosphorus. *Lancet* 1998;352:391-6.
11. Efficacy of endovascular therapy in acute ischemic stroke depends on age and clinical severity. *Stroke* 2018;49:1686-94.
12. VanderWeele TJ, Ding P. Sensitivity analysis in observational research: introducing the E-value. *Ann Intern Med* 2017;167:268-74.
13. Khan AM, Lubitz SA, Sullivan LM, Sun JX, Levy D, Vasan RS, et al. Low serum magnesium and the development of atrial fibrillation in the community: the Framingham Heart Study. *Circulation* 2013;127:33-8.
14. Adams HP Jr, Davis PH, Leira EC, Chang KC, Bendixen BH, Clarke WR, et al. Baseline NIH Stroke Scale score strongly predicts outcome after stroke: a report of the Trial of Org 10172 in Acute Stroke Treatment (TOAST). *Neurology* 1999;53:126-31.
15. Geng HH, Wang Q, Li B, Cui BB, Jin YP, Fu RL, et al. Early neurological deterioration during the acute phase as a predictor of long-term outcome after first-ever ischemic stroke. *Medicine (Baltimore)* 2017;96:e9068.
16. Wolf FI, Trapani V, Simonacci M, Ferré S, Maier JA. Magnesium deficiency and endothelial dysfunction: is oxidative stress in-

- volved? *Magnes Res* 2008;21:58-64.
17. Shechter M, Merz CN, Rude RK, Paul Labrador MJ, Meisel SR, Shah PK, et al. Low intracellular magnesium levels promote platelet-dependent thrombosis in patients with coronary artery disease. *Am Heart J* 2000;140:212-8.
 18. Jee SH, Miller ER 3rd, Guallar E, Singh VK, Appel LJ, Klag MJ. The effect of magnesium supplementation on blood pressure: a meta-analysis of randomized clinical trials. *Am J Hypertens* 2002;15:691-6.
 19. de Jong G, van Raak L, Kessels F, Lodder J. Stroke subtype and mortality: a follow-up study in 998 patients with a first cerebral infarct. *J Clin Epidemiol* 2003;56:262-8.
 20. Pinto A, Tuttolomondo A, Di Raimondo D, Fernandez P, Licata G. Risk factors profile and clinical outcome of ischemic stroke patients admitted in a Department of Internal Medicine and classified by TOAST classification. *Int Angiol* 2006;25:261-7.
 21. Yokota C, Minematsu K, Hasegawa Y, Yamaguchi T. Long-term prognosis, by stroke subtypes, after a first-ever stroke: a hospital-based study over a 20-year period. *Cerebrovasc Dis* 2004;18:111-6.
 22. Skou JC, Butler KW, Hansen O. The effect of magnesium, ATP, P i, and sodium on the inhibition of the (Na + + K +)-activated enzyme system by g-strophanthin. *Biochim Biophys Acta* 1971;241:443-61.
 23. Op't Hof T, Mackaay AJ, Bleeker WK, Jongsma HJ, Bouman LN. Differences between rabbit sinoatrial pacemakers in their response to Mg, Ca and temperature. *Cardiovasc Res* 1983;17:526-32.
 24. DeCarli C, Sprouse G, LaRosa JC. Serum magnesium levels in symptomatic atrial fibrillation and their relation to rhythm control by intravenous digoxin. *Am J Cardiol* 1986;57:956-9.
 25. Arboix A, García-Eroles L, Massons J, Oliveres M. Predictive clinical factors of in-hospital mortality in 231 consecutive patients with cardioembolic cerebral infarction. *Cerebrovasc Dis* 1998;8:8-13.
 26. Cheng Z, Huang X, Muse FM, Xia L, Zhan Z, Lin X, et al. Low serum magnesium levels are associated with hemorrhagic transformation after thrombolysis in acute ischemic stroke. *Front Neurol* 2020;11:962.