



CrossMark

iMRI

Investigative
Magnetic
Resonance
Imaging

A Potential Diagnostic Pitfall in the Differentiation of Hemorrhagic and Fatty Lesions Using Short Inversion Time Inversion Recovery: a Case Report

Jee Hye Kim¹, Woo Young Kang¹, Bum Sang Cho^{1,2}, Kyung Sik Yi¹

¹Department of Radiology, Chungbuk National University Hospital, Cheongju, Korea

²Department of Radiology, College of Medicine and Medical Research Institute, Chungbuk National University, Cheongju, Korea

Case Report

Received: June 21, 2016
Revised: August 3, 2016
Accepted: August 24, 2016

Correspondence to:

Woo Young Kang, M.D.
Department of Radiology,
Chungbuk National University
Hospital, 776 1 Sunhwan-ro,
Seowon-gu, Cheongju-si,
Chungcheongbuk-do 28644,
Korea.

Tel. +82-10-5269-1986

Fax. +82-43-269-6479

Email: quartet0@hanmail.net

Short inversion time inversion recovery (STIR) is widely used for spinal magnetic resonance imaging (MRI) because the pulse sequence of STIR is insensitive to magnetic field inhomogeneity and can be used to scan a large field of view. In this case report, we present a case of spinal epidural hematoma with unexpected signal decrease on a STIR image. The MRI showed an epidural mass that appeared with high signal intensity on both T1- and T2-weighted images. However, a signal decrease was encountered on the STIR image. This nonspecific decrease of signal in tissue with a short T1 relaxation time that is similar to that of fat (i.e., hemorrhage) could lead to a diagnostic pitfall; one could falsely diagnose this decrease of signal as fat instead of hemorrhage. Awareness of the nonselective signal suppression achieved with STIR pulse sequences may avert an erroneous diagnosis in image interpretation.

Keywords: Epidural hematoma; Spine; Fat; Short inversion time inversion recovery (STIR)

INTRODUCTION

A spinal epidural hematoma is an uncommon condition that occupies the spinal canal and that can present with compression of the spinal cord or cauda equina syndrome, resulting in a significant neurologic deficit. Therefore, urgent diagnosis is required. Magnetic resonance imaging (MRI) is the imaging modality of choice for the diagnosis of spinal epidural hematomas. Several studies have reported conventional MRI findings of spinal epidural hematoma (1); however, to the best of our knowledge, there has been no previous report focused on the use of fat suppression images to find spinal epidural hematomas. Fat suppression techniques are an integral part of musculoskeletal imaging for two main purposes: tissue characterization and improved lesion conspicuity. Here, we present a case of an epidural organizing hematoma with an unexpected signal decrease on a short inversion time inversion recovery (STIR) image that had the potential to lead to diagnostic pitfalls in the assessment of the image.

This is an Open Access article distributed under the terms of the Creative Commons Attribution Non-Commercial License (<http://creativecommons.org/licenses/by-nc/3.0/>) which permits unrestricted non-commercial use, distribution, and reproduction in any medium, provided the original work is properly cited.

Copyright © 2016 Korean Society of Magnetic Resonance in Medicine (KSMRM)

CASE REPORT

A 75-year-old woman presented with right leg pain along the course of the right L5 nerve root and right foot drop that had lasted for one month. She was diagnosed with hypertension and a pulmonary thromboembolism two months earlier, which was treated with enalapril, aspirin, and warfarin for anticoagulation. A neurologic examination revealed a motor deficit of 4/5 right ankle dorsiflexion. Blood tests were normal except for prolonged prothrombin time (2.17 international normalized ratio, reference value < 1.2).

A lumbosacral spine MRI revealed a well-defined mass at the posterior epidural space at L4 with severe thecal sac compression. The mass showed high signal intensity

on both T2- and T1-weighted images (Fig. 1a, b, e) and persistent increased signal intensity on a fat-suppressed postcontrast T1-weighted image (Fig. 1d). Gradient echo images demonstrated the mass's central bright high signal intensity and peripheral low signal rim (Fig. 1f). A diffuse signal decrease in the mass was detected on a STIR image (Fig. 1c). Because of the high signal intensity on the T1-weighted image and the diffuse signal decrease on the STIR image, we considered the possibility of a fat-containing tumor, such as an angiolipoma or a hemangioma. However, the outside preoperative computed tomography images that were uploaded into our picture archiving and communication system after surgery showed a peripheral rim enhancing lesion and hyperdensity (about 40 Hounsfield units) without a focus of fat attenuation on the precontrast

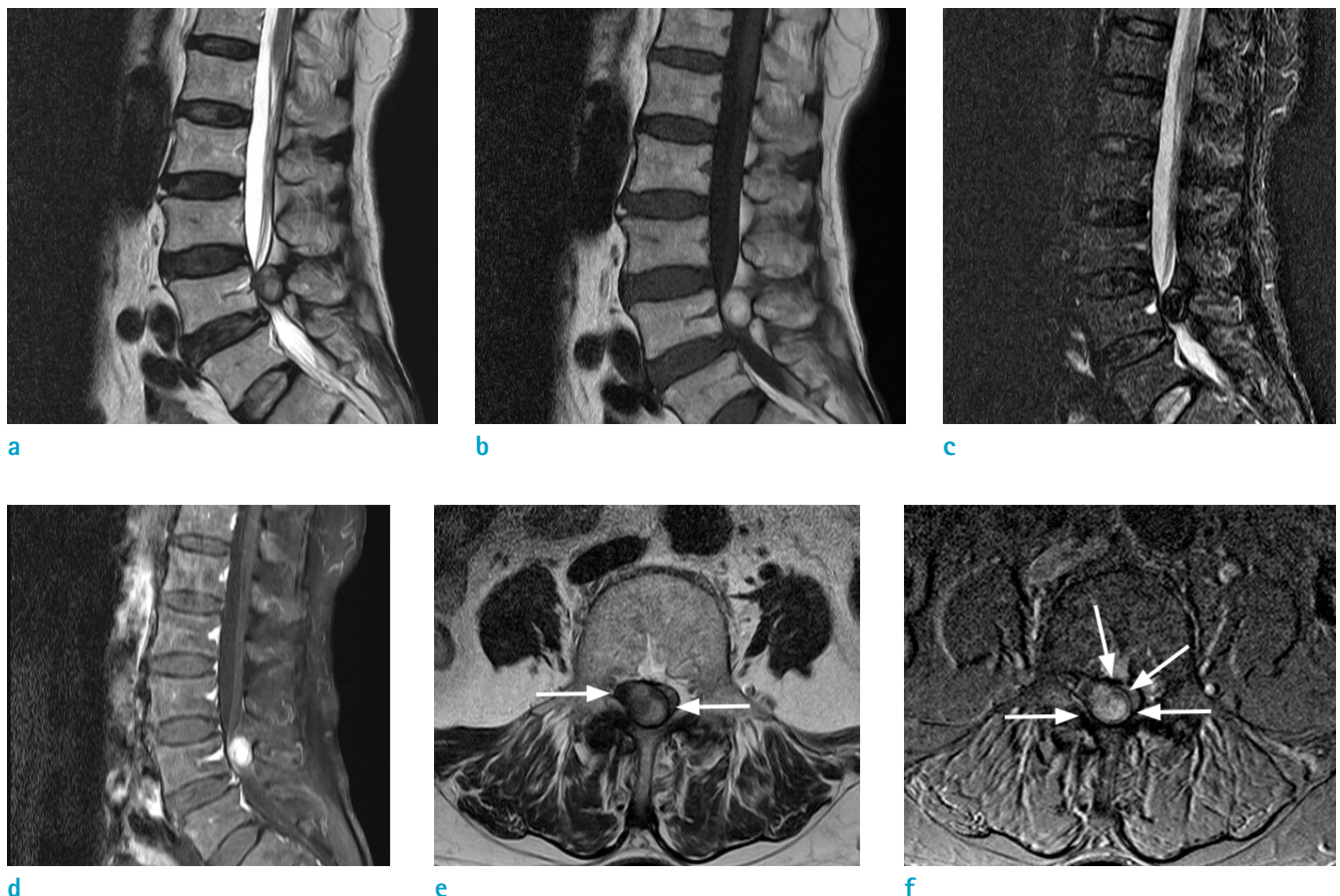


Fig. 1. A magnetic resonance image of the lumbar spine. (a) The sagittal T2-weighted image shows a hyperintense epidural mass at the L4 level, indicating compressing cauda equina syndrome. (b) This image shows hyperintensity on the T1-weighted image. (c) On the STIR image, the lesion shows dark signal intensity. (d) Intense enhancement was observed after contrast infusion. (e) On the axial T2-weighted image the lesion appears as an extradural intraspinal mass at the right posterior aspect of the spinal canal (arrows). (f) The gradient echo image shows relative hyperintensity at the central portion and hypointensity at the peripheral portion (arrows).



Fig. 2. A computed tomography image of the patient's abdomen and pelvis. (a) The precontrast image shows a subtle high-density lesion at L4 (arrow). (b) The postcontrast image shows no gross fatty lesion or a peripheral enhancing lesion (arrow). (c) The coronal image shows a peripheral enhancing lesion at L4 (arrow).

image (Fig. 2).

The patient underwent total a laminectomy of L4, and during the epidural space exploration, an old blood-colored cystic lesion was found. The lesion was completely removed, and a histopathological examination confirmed the organizing hematoma diagnosis. After surgery, the patient's symptoms remained. Repeated imaging studies revealed a recurrent epidural hematoma at the same location, and reoperation was performed. Three months later, the patient's right leg pain and foot drop were completely resolved.

DISCUSSION

STIR sequence uses an initial radio-frequency (RF) pulse to invert spins in longitudinal direction. After a short delay time called inversion time (TI), initial RF pulse is followed by 90 degree RF pulse (2, 3). To achieve a fat suppression, TI should be chosen such that longitudinal magnetization of fat spins is zero when a subsequent 90 degree pulse is applied. Thus, STIR sequence depends on the T1 relaxation time of fat and can suppress signal from any tissue with short T1 relaxation time like fat. In the present case, the lesion showed high signal intensity on both T1- and T2-weighted images with a peripheral low signal intensity rim on gradient echo (GRE) image. This signal behavior is consistent with the late subacute stage of a hematoma. A subacute hematoma contains methemoglobin. In the inner sphere within heme region of methemoglobin, paramagnetic dipole-dipole interaction is responsible for T1 shortening (4).

A spinal epidural hematoma should be considered during

the differential diagnosis of acute spinal cord compression syndrome, especially in patients receiving anticoagulants. A spinal epidural hematoma may occur spontaneously or secondarily after a trauma or procedure. With MRI, a hematoma shows various signal intensities corresponding with the hematoma's aging process and blood breakdown product. Hemoglobin transforms through several forms with hematoma evolution: hyperacute (intracellular oxyhemoglobin, long T1 and T2), acute (intracellular deoxyhemoglobin, long T1 and short T2), early subacute (intracellular methemoglobin, short T1 and T2), late subacute (extracellular methemoglobin, short T1 and long T2), and chronic (ferritin and hemosiderin, short T2) (4). In the present case, although an accurate 1:1 MR-pathologic correlation could not be performed because most of the lesion was removed in pieces and not en bloc, we believed that signal drop on STIR resulted from methemoglobin of blood breakdown products. To the best of our knowledge, there have been two reports about signal drop on STIR images in hematoma (5, 6). Froehlich et al. (5) and Khaladkar et al. (6) presented cases of hemorrhagic lesion with signal suppression on STIR in female pelvis.

Hematoma can show unexpected signal decrease on STIR images and it simulates signal behavior of fat tissue. Fat tissue demonstrates homogeneous signal drop on STIR images. In contrast, hematomas demonstrate heterogeneous signal drop with internal regions of high signal intensities and peripheral dark signal rim and it sometimes accompanied by fluid-fluid levels. These characteristic imaging features are helpful in differentiating hematomas from fatty lesions.

Fat-suppression techniques are an integral part of MRI and can be achieved by various methods (frequency-selective fat suppression, water-selective techniques, chemical shift, and inversion recovery). The selection of fat-suppression techniques depends on the purpose of the study, the amount of fat in the tissue, and the magnetic field strength. Frequency-selective fat saturation and STIR are most commonly used in clinical spine imaging (7, 8).

Frequency-selective fat saturation is based on the chemical shift difference between water and fat. Fat saturation is specific for fat, providing an improved signal-to-noise ratio, and it is a reliable technique for the acquisition of contrast-enhanced imaging. The disadvantage of fat saturation is that it is highly sensitive to magnetic field inhomogeneity. Large fields of view and off-center imaging can result in failed fat saturation. Another limitation of fat saturation is that it is unsuitable for low-field strength magnets (2, 8).

STIR is based on differences in T1 relaxation rather than the tissue-specific time of the tissues. The T1 relaxation time of fat is shorter than that of water. With the selection of a short inversion time, the null point of fat tissue, the signal of fat tissue is suppressed. The advantages of STIR are that it is less sensitive to magnetic field inhomogeneity than frequency-selective fat saturation and can be used in low-field strength magnets. The principal disadvantage is that this technique does not only suppress fat; the signal from tissue with a short T1 relaxation time can also be suppressed. Other disadvantages are a relatively long scanning time and low signal-to-noise ratio (2, 8).

In our case, the mass seemed to be more enhanced on the fat-suppressed postcontrast T1-weighted image compared with the STIR image and the precontrast T1-weighted image. Because the background fat is suppressed, the assessment of the degree of enhancement can be overestimated or underestimated with only fat-suppressed postcontrast T1-weighted image. Therefore, when a fat suppression technique is used to contrast enhancement images for the evaluation of a tumorous condition, one-to-one corresponding comparison with fat-suppressed precontrast and postcontrast T1-weighted images or with nonfat-suppressed precontrast T1-weighted image and post contrast T1-weighted images may be helpful for the

accurate assessment of the presence and the degree of enhancement to avoid distraction as stated above.

In summary, fat suppression is not tissue-specific but depends on T1 relaxation time on STIR images. Hemorrhagic content may have a short T1 relaxation time similar to that of fat and show signal decrease on STIR. Therefore, awareness of the nonselective signal suppression achieved with STIR images in hematoma may avert an erroneous diagnosis in image interpretation, especially when we evaluate patients receiving anticoagulants.

REFERENCES

1. Lovblad KO, Baumgartner RW, Zambaz BD, Remonda L, Ozdoba C, Schroth G. Nontraumatic spinal epidural hematomas. MR features. *Acta Radiol* 1997;38:8-13
2. Krinsky G, Rofsky NM, Weinreb JC. Nonspecificity of short inversion time inversion recovery (STIR) as a technique of fat suppression: pitfalls in image interpretation. *AJR Am J Roentgenol* 1996;166:523-526
3. Delfaut EM, Beltran J, Johnson G, Rousseau J, Marchandise X, Cotten A. Fat suppression in MR imaging: techniques and pitfalls. *Radiographics* 1999;19:373-382
4. Bradley WG Jr. MR appearance of hemorrhage in the brain. *Radiology* 1993;189:15-26
5. Froehlich JM, Metens T, Chilla B, Hauser N, Hohl MK, Kubik-Huch RA. MRI of the female pelvis: a possible pitfall in the differentiation of haemorrhagic vs. fatty lesions using fat saturated sequences with inversion recovery. *Eur J Radiol* 2012;81:598-602
6. Khaladkar SM, Kamal A, Kamal V, Kumar S, Singh G, Kalra R. Pitfall in differentiation of hemorrhagic vs. fatty lesions in female pelvis using fat saturated sequences with inversion recovery - role of T1 FATSAT sequence - a case report with radiological review. *IOSR-JDMS* 2015;14:86-90
7. Lee YS, Kwon ST, Kim JO, Choi ES. Serial MR imaging of intramuscular hematoma: experimental study in a rat model with the pathologic correlation. *Korean J Radiol* 2011;12:66-77
8. Wu J, Lu L-Q, Gu J-P, Yin X-D. The application of fat-suppression MR pulse sequence in the diagnosis of bone-joint disease. *Int J Med Phys, Clin Eng and Radiat Oncol* 2012;1:88-94