

단독 승모판 열개에 의한 승모판 폐쇄부전 1례

이태희¹ · 최혜숙¹ · 진은선¹ · 김장하¹ · 한주영¹ · 김남훈¹
 김영희¹ · 정승묵² · 최락경² · 임달수² · 홍석근² · 황홍곤²

A Case of Mitral Regurgitation due to Isolated Cleft Mitral Valve

Tae Hee Lee, MD¹, Hye Sook Choi, MD¹, Eun Sun Jin, MD¹, Jang Ha Kim, MD¹,
 Joo Young Han, MD¹, Nam Heun Kim, MD¹, Young Hee Kim, MD¹, Seung Mook Jung, MD²,
 Rak Kyung Choi, MD², Dal Soo Lim, MD², Suk Keun Hong, MD² and Hweung Kon Hwang, MD²

¹Department of Internal medicine, Kyung Hee University Medical School, Seoul,

²Department of Internal Medicine, Sejong General Hospital, Bucheon, Korea

ABSTRACT

A cleft in the anterior mitral valve leaflet is commonly associated with an atrioventricular septal defect, but an isolated cleft mitral valve is a rare condition. We report a case of a 27-year-old woman with severe mitral regurgitation due to an isolated cleft mitral valve. The echocardiography showed an anterior cleft on the mitral valve, but a normal sized and positioned left ventricular papillary muscle without septal defect. Under the diagnosis of mitral regurgitation due to the isolated cleft mitral valve the patient underwent mitral cleft repair. After surgery, the further echocardiography showed no mitral regurgitation. (**Korean Circulation J 2002; 32(10):902-905**)

KEY WORDS : Mitral valve insufficiency.

서론

심방-심실 분할 결손(atrioventricular septal defect)과 함께 전방 판막의 열개(cleft)를 동반하는 경우가 많으나, 단독으로 전방 판막 열개에 의한 심방-심실 역류가 발생하는 경우는 드물다. 본 증례는 27세 여자 환자로 심방-심실 역류가 심한 심초음파 소견에서 전방 판막의 열개와 정상 크기와 위치에 있는 좌심실 판막근을 보았으며, 진단상 전방 판막 열개에 의한 심방-심실 역류로 진단된 환자로서 전방 판막 열개 수술후 심초음파 소견상 심방-심실 역류가 소실된 경우를 보고한다. (Korean Circulation J 2002; 32(10):902-905)

증례

환자 : 2002 9 13
 : 2002 9 25
 : , 422 - 232
 2 91 - 121
 : (032) 340 - 1102 · : (032) 340 - 1236
 E-mail : h_k_hwang@hotmail.net

가 : - .
 : 160 cm,
 55 kg
 120/80 mmHg, 80 ,
 20 , 36.5 .
 4/6
 :
 6,330/mm³, 12.0 g/dL, 35.7%,
 254,000/mm³ . BUN 14
 mg/dL, Creatinine 0.7 mg/dL, 94 mg/dL,
 Total protein 7.6 mg/dL, Albumin 5.0 mg/dL Total
 bilirubin 0.4 mg/dL Na 144 mEq/L, K 4.5 mEq/L .
 : QRS +60 °
 P - R
 :
 :
 32 mm, 56 mm, 42 mm
 70%

A2

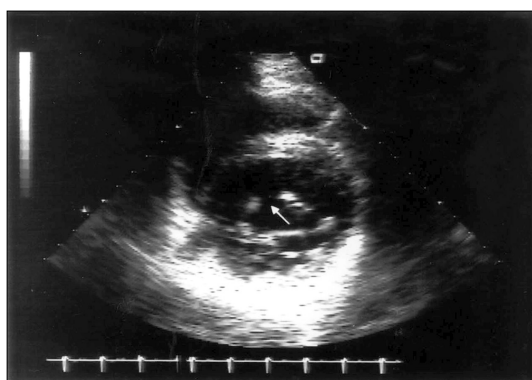


Fig. 1. Parasternal short-axis view at the level of the mitral valve. White arrow indicates the cleft. It divides the anterior mitral leaflet into two segments in diastole.

(Fig. 1, 2).

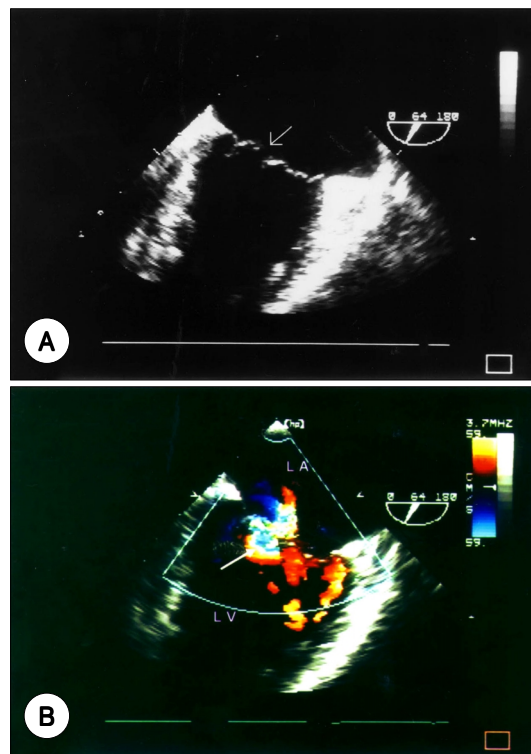


Fig. 2. Transesophageal echocardiographic view. White arrow indicates the cleft. It is at the level of anterior mitral valve leaflet A2 portion (A). White arrow indicates proximal isovelocity surface area (PISA) at A2 portion. The mitral regurgitation jet passes through the cleft (B).

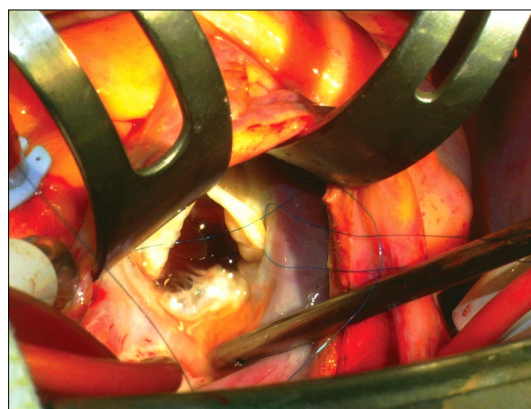


Fig. 3. Close-up view from left atrium. The cleft is at anterior mitral leaflet and the edges of the cleft are relatively thickened.

1954

1)

가

(Fig. 3).

가

3 2 , 3 1

가

가

가

4)

6-0 Polypropylene

가

3 2

가

87

4

7

P - R

Fraisse 4)

. Tamura QRS 4-7)

가

가

(1),

Kohl 5)

11

가

가

고 찰

(

가 , Ehl-

ers - Danlos)

1)2)

4

1

가

QRS

P - R 4-7)

6%

가 3)

4)

가

가

중심 단어 :

REFERENCES

- 8) .
 - 9-11) .
 - 가
 - 가
 - Glutaraldehyde - treated autologous pericardium patch material
 - 9) .
 - 13
 - di Segni Edwards¹²⁾
 - 가 가
 - 9) Tamura 6)
 - 요 약
 - 가
- 1) McDonald RW, Ott GY, Pantely GA. *Cleft in the anterior and posterior leaflet of the mitral valve: a rare anomaly. J Am Soc Echocardiogr* 1994;7:422-4.
 - 2) Braunwald E, Zipes DP, Libby P. *Heart disease: a textbook of cardiovascular medicine*. 6th ed. Philadelphia: W B Saunders;2001. p.1553.
 - 3) Murray GF, Wilcox BR. *Secundum atrial septal defect and mitral valve incompetence. Ann Thorac Surg* 1975; 20:136-43.
 - 4) Fraisse A, Massih TA, Bonnet D, Sidi D, Kachaner J. *Cleft of the mitral valve in patients with Down's syndrome. Cardiol Young* 2002;12:27-31.
 - 5) Kohl T, Silverman NH. *Comparison of cleft and papillary muscle position in cleft mitral valve and atrioventricular septal defect. Am J Cardiol* 1996;77:164-9.
 - 6) Tamura M, Menahem S, Brizard C. *Clinical features and management of isolated cleft mitral valve in childhood. J Am Coll Cardiol* 2000;35:764-70.
 - 7) Sigfusson G, Etedgui JA, Silverman NH, Anderson RH. *Is a cleft in the anterior leaflet of an otherwise normal mitral valve an atrioventricular canal malformation? J Am Coll Cardiol* 1995;26:508-15.
 - 8) McEnany MT, English TA, Ross DN. *The congenitally cleft posterior mitral valve leaflet. Ann Thorac Surg* 1973; 16:281-92.
 - 9) Perier P, Clausnizer B. *Isolated cleft mitral valve: valve reconstruction techniques. Ann Thorac Surg* 1995;59:56-9.
 - 10) Chauvaud SM, Milhaileanu SA, Gaer JA, Carpentier AC. *Surgical treatment of congenital mitral valvar insufficiency: "the hospital broussais" experience. Cardiol Young* 1997; 7:5-14.
 - 11) Zias EA, Mavroudis C, Backer CL, Kohr LM, Gotteiner NL, Rocchini AP. *Surgical repair of the congenitally malformed mitral valve in infants and children. Ann Thorac Surg* 1998;66:1551-9.
 - 12) di Segni E, Edwards JE. *Cleft anterior leaflet of the mitral valve with intact septa: a study of 20 cases. Am J Cardiol* 1983;51:919-26.