

## 편두통 환자에서 Imigran® (Sumatriptan) 복용 직후 발생한 혈관연축성 협심증 1예

최기현 · 김태용 · 최재혁 · 옥재욱 · 박진찬  
오재인 · 조윤경 · 황경화 · 임상욱 · 차동훈

### A Case of Vasospastic Angina Pectoris Occurring Following Administration of Oral Imigran for Migraine

Ki-Hyun Choi, MD, Tae-Yong Kim, MD, Jae-Hyuk Choi, MD, Jae-Wook Ok, MD,  
Jin-Chan Park, MD, Jane Oh, MD, Yoon-Kyung Cho, MD  
Kyung-Hwa Hwang, MD, Sang-Wook Lim, MD and Dong-Hoon Cha, MD

Division of Cardiology, Department of Internal Medicine, Pundang CHA Hospital,  
Pochon Joongmoon Medical College, Sungnam, Korea

#### ABSTRACT

Imigran® (sumatriptan), a 5-hydroxytryptamine (HT) derivative, is highly effective in aborting attacks of migraine and cluster headache. The drug is generally well tolerated. However, although up to 8% of patients consistently have demonstrated chest symptoms, including chest pressure, tightness, and pain, often mimicking angina pectoris. It has been suggested that these chest symptoms are caused by coronary vasoconstriction, and that this effect may be mediated by endothelial dysfunction. This can be reversed by the administration of glyceryl trinitrate. We report a case of vasospastic angina pectoris occurring after the administration of oral sumatriptan in a patient with migraine. (Korean Circulation J 2001;31(10):1071-1074)

**KEY WORDS :** Sumatriptan ; Migraine ; Angina pectoris, variant.

#### 서론

(neuro - inflam -  
matory peptide)

<sup>2)</sup>  
가 <sup>3)4)</sup>

<sup>1)</sup>

Imigran( ; sumatriptan)

, 3~8%

<sup>5-9)</sup>

: 2001 7 18

: 2001 8 24

: , 463 - 070

351

: (031) 780 - 5860 · : (031) 780 - 5857

E - mail : TYKIM@cha.ac.kr

riptan

가 sumat -

증례

: , 40 .

: 30

: Imigran® 50

mg 30 ,

, 30

6

Imigran 50 mg ,

Imigran® 30 30~60 2

가

: .

: 20 1

가 : .

: 160/100 mmHg,

68 / , 32 / .

: 12

(V<sub>1-4</sub>) 3 mm ST T 가

, III, aV<sub>F</sub> ST - T 가 (Fig. 1).

: X

, CK 105 U/L(38~160 U/L), CK - MB 1.12 ng/mL(0~0.5 ng/mL), Troponin - T<0.010 ng/mL(~0.1 ng/mL)

176

mg/dL, HDL 28 mg/dL, LDL

113 mg/dL .

:

Isosorbide dinitrate He -

parin(5000 U 1000 U )

1 III,

aV<sub>F</sub> ST - T

(Fig. 2).

2

60% (Fig. 3).

amlodipine 5 mg

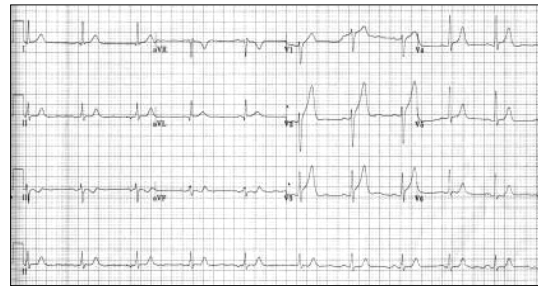


Fig. 1. ECG at admission shows ST segment elevation with tall T wave in V<sub>1-4</sub> and reciprocal ST-T changes in lead III, aV<sub>F</sub>.

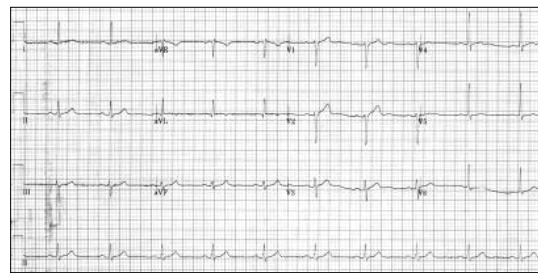


Fig. 2. ECG taken after intravenous isosorbide dinitrate infusion shows no pathologic ST-T changes in precordial and limb leads.

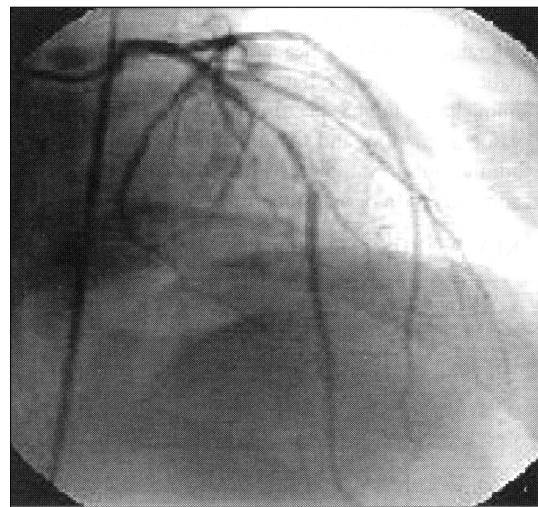


Fig. 3. Left coronary angiogram with cranial angulation (AP cranial) view shows 60% stenosis of the mid left anterior descending artery.

## 고찰

Imigran®( ; sumatrip -

tan) 5 - Hydroxytryptamine(5 - HT<sub>1B/1D</sub>)

가 , ,

(neuro - inflammatory peptide)  
5 - HT<sub>2</sub>  
sumatriptan  
60%  
sumatriptan

5 - HT<sub>1</sub> 가 , 가 .  
5 - sumatriptan 가

HT<sub>1</sub>  
sumatriptan  
가

Sumatriptan  
요 약

3~8%  
100~300 mg  
3% , 4~8 mg  
5%  
0.1~  
0.2%  
sumat -  
riptan

중심 단어 : Sumatriptan ; ; .

## REFERENCES

- 1) Lance JW. *A concept of migraine and the search for the ideal headache drug.* Headache 1990;30(1 Suppl):17-23.
- 2) Cady RK, Wendt JK, Kirchner JR, Sargent JD, Rothrock JF, Skaggs H Jr. *Treatment of acute migraine with subcutaneous sumatriptan.* JAMA 1991;265:2831-5.
- 3) The Subcutaneous Sumatriptan International Study Group. *Treatment of migraine attacks with sumatriptan.* N Engl J Med 1991;325:316-21.
- 4) The Sumatriptan Cluster Headache Study Group. *Treatment of acute cluster headache with sumatriptan.* N Engl J Med 1991;325:322-6.
- 5) O'Connor P, Gladstone P. *Oral sumatriptan-associated transmural myocardial infarction.* Neurology 1995;45:2274-6.
- 6) Ottervanger JP, Paalman HJ, Boxma GL, Stricker BH. *Transmural myocardial infarction with sumatriptan.* Lancet 1993;341:861-2.

가  
가  
1~2  
glyceryl trinitrate  
2  
isosorbide dinitrate  
Sumatriptan  
(Raynaud phenomenon),

- 7) Curtin T, Brooks AP, Roberts JA. *Cardiorespiratory distress after sumatriptan given by injection. BMJ* 1992;305:713-4.
- 8) Inman W, Kubota K. *Cardiorespiratory distress after sumatriptan given by injection. BMJ* 1992;305:714.
- 9) Abrahamsen B, Christiansen BD. *Angina pectoris after sumatriptan (Imigran). Ugeskr Laeger* 1992;154:3602-3.
- 10) Brown EG, Endersby CA, Smith RN, Talbot JC. *The safety and tolerability of sumatriptan: an overview. Eur Neurol* 1991;31:339-44.
- 11) Joo JH, Lee SC, Sung SM, Jung DS, Park KH. *The Clinical Efficacy of Subcutaneous Sumatriptan (Imigran) for? Acute Treatment of Migraine. Korean J Neurol* 1995;3:543-50.
- 12) MacIntyre PD, Bhargava B, Hogg KJ, Gemmill JD, Hillis WS. *Effect of subcutaneous sumatriptan, a selective 5HT<sub>1</sub> agonist, on the systemic, pulmonary, and coronary circulation. Circulation* 1993;87:401-5.
- 13) Kaumann AJ, Frenken M, Posival H, Brown AM. *Variable participation of 5-HT<sub>1</sub>-like receptors and 5-HT<sub>2</sub> receptors in serotonin-induced contraction of human isolated coronary arteries. 5-HT<sub>1</sub>-like receptors resemble cloned 5-HT<sub>1D</sub> beta receptors. Circulation* 1994;90:1141-53.
- 14) Golino P, Maseri A. *Serotonin receptors in human coronary arteries. Circulation* 1994;90:1573-5.
- 15) Houghton LA, Foster JM, Whorwell PJ, Morris J, Fowler P. *Is chest pain after sumatriptan oesophageal in origin? Lancet* 1994;344:985-6.
- 16) Hood S, Brine D, MacIntyre PD, Hillis WS. *Sumatriptan-induced chest pain. Lancet* 1994;344:1500-1.
- 17) Zeiher AM, Drexler H, Saurbier B, Just H. *Endothelium-mediated coronary blood flow modulation in humans: effects of age, atherosclerosis, hypercholesterolemia, and hypertension. J Clin Invest* 1993;92:652-62.
- 18) Zeiher AM, Schachinger V, Minners J. *Long-term cigarette smoking impairs endothelium-dependent coronary arterial vasodilator function. Circulation* 1995;92:1094-100.
- 19) Dechant KL, Clissoid SP. *Sumatriptan: a review of its pharmacodynamic and pharmacokinetic properties, and therapeutic efficacy in the acute treatment of migraine and cluster headache. Drugs* 1992;43:776-98.
- 20) Palmer J, Feldman R, Mancini GB, Zimmerman M. *Glycerol trinitrate reversal of post-sumatriptan coronary artery narrowing. Lancet* 1995;345:1366.