

## 폐선암의 심장침습 부위에서 발생한 종양색전에 의한 뇌경색증 1예

황의창 · 류 센 · 김인호 · 박현종 · 강남용 · 이명용

### A Case of Cerebral Infarction Caused by Tumor Emboli from the Site of Cardiac Invasion of Lung Cancer

Eui Chang Hwang, MD, Sen Lyu, MD, In Ho Kim, MD, Hyun Jong Park, MD,  
Nam Young Kang, MD and Myung-Yong Lee, MD

Department of Internal Medicine, College of Medicine, Dankook University, Cheonan, Korea

#### ABSTRACT

Multiple cerebral infarction developed in a 36-year-old woman with adenocarcinoma of the right lung with direct cardiac invasion. Neurological examination and brain MRI showed findings of ordinary infarction. Transesophageal echocardiography showed left atrial pedunculated mass which was the potential source of embolism. We report a rare case who had such multiple spontaneous tumor emboli large enough to result in clinically detectable cerebral infarction. (**Korean Circulation J 1999;29(7):731-734**)

**KEY WORDS :** Tumor embolism · Cerebral infarction · Lung cancer.

#### 서 론

intravascular coagulation)<sup>4)</sup>  
(non - bacterial thrombotic endocarditis)<sup>5)</sup>

20%

가

1-3)

가

(disseminated

: 1999 3 16

: 1999 6 9

: , 330 - 715

16 - 5

: (0417) 550 - 6279 · : (0417) 556 - 6991

E - mail : netizen@isdmc.co.kr

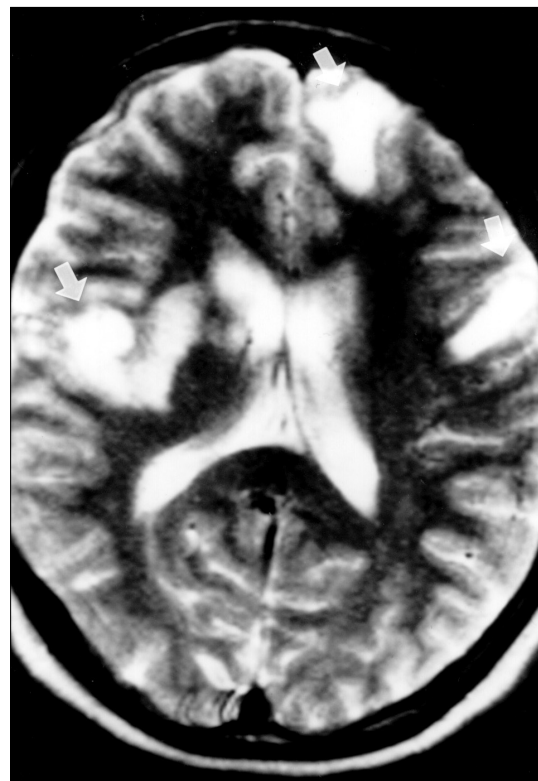
## 증례

: , 36 , .  
 : .  
 : 6  
 가 ,  
 ,  
 ,  
 (transthoracic echocardiography)  
 : 20  
 가 :  
 :  
 :  
 :  
 , 36.6 ,  
 107 / , 20 / , 100/60 mmHg  
 .  
 ,  
 ,  
 : 6.300/mm<sup>3</sup>,  
 11.9 g/dl, Hct 35.2%, 233.000/mm<sup>3</sup>  
 BUN 8.6 mg/dl, creatinine 1.11  
 mg/dl ,  
 1+ .  
 :  
 :  
 :  
 : 8×6  
 cm 가  
 , , ,  
 (Fig. 1).  
 :  
 (Fig. 2).  
 :  
 가 ,

pedunculated mass가 (Fig. 3).



**Fig. 1.** Chest CT showed 8×6 cm sized heterogenous mass with direct cardiac invasion from the right lower lobe.



**Fig. 2.** Magnetic resonance imaging, T2 weight axial image. Patchy nodular lesions of multiple high signal intensity (arrows) in both temporal lobes and left frontal lobe are noted.



**Fig. 3.** Transesophageal echocardiogram showed a large mediastinal mass invading the both atria and demonstrating pedunculated mass (arrow) on its surface.

가 가 , , 28  
24 , (left atrial auricle)  
1 . O'Neill 21)  
28  
고 찰  
67)  
4)8 - 10) 가  
Rickles 11)  
가  
가  
가 tissue factor  
Factor X  
가 tumor 가 , 1  
necrosis factor interleukin  
3가  
(vegetation)  
thromboembolus  
가  
pedunculated

mass가

(non - atherosclerotic stroke)

중심 단어 :

1998 50

### REFERENCES

- 1) Toole JF. *Cerebrovascular disorder, 4th Ed.* New York: Raven Press;1990. p.246.
- 2) Lee RJ, Bartzokis T, Yeoh TK, Grogan HR, Choi D, Schnitter I. *Enhanced detection of intracardiac sources of cerebral emboli by transesophageal echocardiography.* *Stroke* 1991;22:734-39.
- 3) Pearson AC, Nagelhout D, Castello R, Gomez CR, Laboritz AJ. *Atrial septal aneurysm and stroke. A transesophageal echocardiographic study.* *J Am Coll Cardiol* 1991;18:1223-29.
- 4) Collins RC, Al-Mondhiry H, Chernik NL, Posner JB. *Neurologic manifestations of intravascular coagulation in patients with cancer. A clinicopathologic analysis of 12 cases.* *Neurology* 1975;25:795-806.
- 5) Reagan TJ, Okazaki H. *The thrombotic syndrome associated with carcinoma.* *Arch Neurol* 1974;31:390-95.
- 6) Lefkowitz NW, Roessmann U, Kori SH. *Major cerebral infarction from tumor embolus.* *Stroke* 1986;17:555-57.
- 7) O'Neil BP, Dinapoli RP, Okazaki H. *Cerebral infarction as a result of tumor emboli.* In: Walker, DGT Thomas editors. *Biology of brain tumour.* Boston. Martinus Nijhoff Publishers;1986. p.227-34.
- 8) Thompson T, Evans W. *Paradoxical embolism.* *Q J Med* 1930;23:135-50.
- 9) Maher LJ, Lie JT, Groover RV, Seward JB, Puga FJ, Feldt RH. *Primary cardiac myxosarcoma in a child.* *Mayo Clin Proc* 1979;54:261-66.
- 10) Kim HS, Suzuki M, Lie JT, Titus JL. *Nonbacterial thrombotic endocarditis (NBTE) and disseminated intravascular coagulation (DIC): autopsy study of 36 patients.* *Arch Pathol Lab Med* 1977;101:65-8.
- 11) Rickles FR, Edwards RE. *Activation of blood coagulation in cancer: Trousseau's syndrome revisited.* *Blood* 1983;62:14.
- 12) Graus F, Rogers LR, Posner JB. *Cerebrovascular complications in patients with cancer.* *Medicine* 1985;64:16-35.
- 13) Min KW, Gyorkey F, Sato C. *Mucin-producing adenocarcinomas and nonbacterial thrombotic endocarditis: pathogenetic role of tumor mucin.* *Cancer* 1980;45:2374-82.
- 14) Waller BF, Knapp WS, Edwards JE. *Marantic valvular vegetations.* *Circulation* 1973;48:644-50.
- 15) Barron KD, Siqueira E, Hirano A. *Cerebral embolism caused by nonbacterial thrombotic endocarditis.* *Neurology* 1960;10:391-97.
- 16) Kuramoto K, Matsushita S, Yamanouchi H. *Nonbacterial thrombotic endocarditis as a cause of cerebral and myocardial infarction.* *Jpn Circ J* 1984;48:1000-06.
- 17) Rogers LR, Cho E, Kempin S, Posner JB. *Cerebral infarction from non-bacterial thrombotic endocarditis. Clinical and pathological study including the effects of anticoagulation.* *Am J Med* 1987;83:746-56.
- 18) Deppisch LM, Fayemi AO. *Non-bacterial thrombotic endocarditis: clinicopathological correlations.* *Am heart J* 1976;92:723-29.
- 19) Lopez JA, Ross RS, Fishbein MC, Siegel RJ. *Nonbacterial thrombotic endocarditis: A review.* *Am Heart J* 1987;113:773-84.
- 20) Starr DS, Lawrie GM, Morris GC Jr. *Unusual presentation of bronchogenic carcinoma.* *Cancer* 1981;47:398-401.
- 21) O'Neill BP, Dinapoli RP, Okazaki H. *Cerebral infarction as a result of tumor emboli.* *Cancer* 1987;60:90-5.
- 22) Willis RA. *The spread of tumors in the human body.* London: Butterworth;1972.
- 23) Graus F, Rogers LR, Posner JB. *Cerebrovascular complications in patients with cancer.* *Medicine* 1985;64:16-35.
- 24) Imaizumi K, Murate T, Ohno J, Shimokata K. *Cerebral infarction due to a spontaneous tumor embolus from lung cancer.* *Respiration* 1995;62:155-56.