

## 급성 심근 경색증이 합병된 본태성 혈소판 증다증 (Essential Thrombocythemia) 1예

나승운 · 박상원 · 이상철 · 황교승 · 안정천 · 송우혁 · 임도선  
박창규 · 김영훈 · 서홍석 · 심완주 · 오동주 · 노영무

= Abstract =

### A Case of Essential Thrombocythemia Complicated by Acute Myocardial Infarction

Seung Woon Rha, M.D., Sang Won Park, M.D., Sang Chil Lee, M.D.,  
Kyo Seung Whang, M.D., Jung Cheon Ahn, M.D., Woo Hyuk Song, M.D.,  
Do Sun Lim, M.D., Chang Gyu Park, M.D., Young Hoon Kim, M.D.,  
Hong Seog Seo, M.D., Wan Joo Shim, M.D.,  
Dong Joo Oh, M.D., Young Moo Ro, M.D.

*Department of Internal Medicine, Korea University Hospital, Seoul, Korea*

Essential thrombocythemia, a subcategory of chronic myeloproliferative disorder, is characterized by absolute thrombocytosis due to excessive clonal proliferation of platelets, hyperaggregability of platelets and increased incidence of thrombosis and hemorrhage.

Essential thrombocythemia may cause frequent vascular thrombosis, but it can be a rare cause of acute ischemic heart diseases such as acute myocardial infarction without atherosclerosis, unstable angina and angina pectoris.

We report a case of essential thrombocythemia complicated by acute myocardial infarction. A patient with a previous history of vascular thrombotic complications (such as transient ischemic attack and deep vein thrombosis) was managed with 2.8 million units of intravenous urokinase, antiplatelet agent, ACEI, antianginal medications and hydroxyurea. There were clinically remarkable improvements and no further episodes of thrombotic ischemic vascular complications, including acute myocardial infarction.

**KEY WORDS :** Essential thrombocythemia · Acute myocardial infarction · Thrombus.

서 론

가

[CGL]),

bocythemia[ET]),

(Polycythemia vera[PV]),  
(Chronic granulocytic leukemia  
(Essential throm -

(Agnogenic myeloid metaplasia with myelofibrosis[MMMf]) (myeloproliferative disorder)

3 36.6 , 70 / , 22 , 90/60,

5 1).

2) (clonal rearrangement)

3).

가 5,700/mm<sup>3</sup>, 11.6gm/dl, 703,000/mm<sup>3</sup>

2),

ALT 10IU/l, AST 15 IU/l, Total Protein 7.2g/dl, Al - bumin 3.8g/dl, Total bilirubin 0.5mg/dl, Direct bilirubin 0.1mg/dl, ALP 53IU/l, BUN 11mg/dl, Cr 1.0mg/dl, CRP ( - ) , CPK 1938IU/l, CK - MB 499.0ng/ml, LDH 601 IU/l flipped pattern

6) 7) (transient ischemic attack) (deep vein thrombosis)

가 BT 3min, PT 14.2sec(72.4%), PTT 40sec (control 29) . X

Hydroxyurea,

1

증 례

(Akinetic apex and apical septum) 50 55%

: , 67 , .

: .

: 1995 3 Urokinase 280 , 90 (Fig. 1)

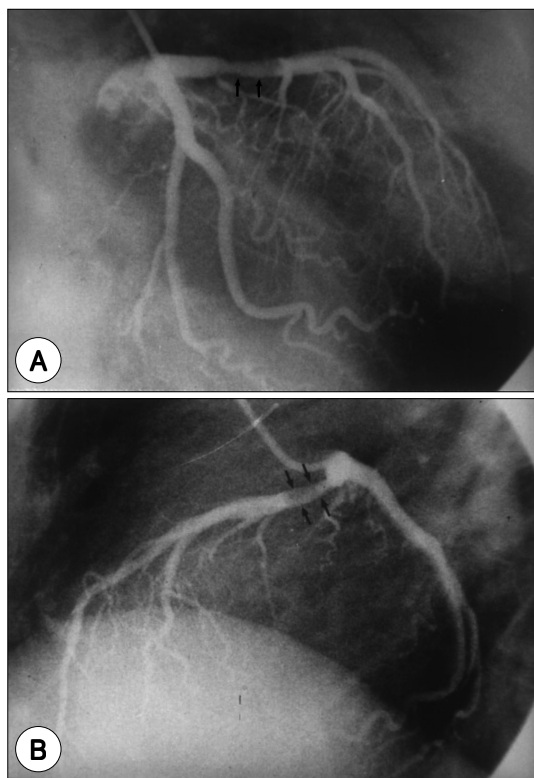
10 , 가 (LAD) 30%

30 가

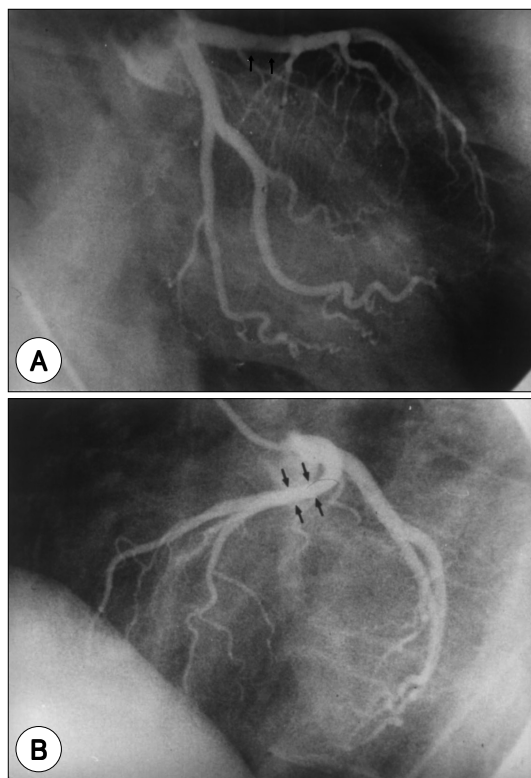
, 가 1 30 (TIMI grade 3), (Colla - terals) (grade 0).

: (TIA), (LVG) (Hypokinesia in Apex and apical ant wall)

(DVT) 1995.3 .



**Fig. 1.** The 90min CAG shows a mild stenosis(<30%) with visible intraluminal thrombus(arrows) in proximal LAD with a good distal run off(TIMI grade 3 flow) (A : RAO view, B : LAO cranial view).



**Fig. 2.** Follow-up 14 - day CAG postMI shows a minimal stenosis(10 - 20%) but previously noticed filling defect-like radiolucent area is no more visible (arrows) in infarct-related artery(Proximal LAD) (A : RAO view, B : LAO cranial view).

50% . Urokinase 3  
Heparinization , Aspirin, Capoten(Ca-  
ptopril) El - antan(Isosorbide mononitrate),  
Sigmart(Nicorandil) ,

Hydroxyurea 40 60

14

(Fig. 2)

(TIMI grade 3),  
(grade 0). (Aki -  
netic apex) 55% .

Hydroxyurea

## 고 안

PVSG(Polycythemia  
Vera Study Group)

가  $6 \times 10^5/\text{mm}^3$

8,9)

(Reactive thrombocytosis)

60

가

가 , 가 가 가 가 14).

46 Kathleen V. Watson 가 가 2).

가 (Giant platelet), 가 3 가 15).

(Platelet aggregation) (diagnostic) (suggestive) prostacyclin

Interleukin -6, CRP, Fibrinogen & Von Willebrand factor antigen (Acute phase reactant) (sympathoadrenal activation) (haemostatic activation) 16).

가 , (clonal thrombocytosis) 9,10) 가 50 60 가 2,14) 17) 가 18)

1/4 가 5).

(e.g. Budd - Chiari syndrome), 9).

가 가 Hydroxyurea가 19). Hydroxyurea Ribonucleotide reductase

1,000 × 10<sup>9</sup>/mm<sup>3</sup> 11) 2,000 가 , 15% 가

× 10<sup>9</sup>/mm<sup>3</sup> 12) NSAIDS 가 33% 500mg

Von willebrand factor polymer가 100,000 400,000/mm<sup>3</sup> 9,19) 3,000 3,000

4), 가 anagrelide<sup>20)</sup>가

5), quinazolin cyclic nucleotide

2), in vitro phosphodiesterase phospholipase A2

(Spontaneous megakaryocyte colony phopspholipid arachidonic acid (megakaryocyte formation)<sup>13)</sup> maturation)

90%  
Hydroxyurea Anagrelide가  
feron - 22) 300  
500 /m<sup>2</sup>  
가 가

Radioactive phosphorus 32P  
(alkylating agent) 가  
(leukemogenic potential)  
23)

(heterogenous) 20)  
(hype -  
raggregability)

가 가 Aspirin Dipyri -  
damole ,

7 가 24) 5  
700,000 1,000,000/mm<sup>3</sup> Aspirin  
dipyridamole

25) Aspirin

가 3  
6)가 ,  
가 , Aspirin

가  
, ,  
가 , 50  
가 60

Aspirin Dipyridamole  
, Hydroxyurea  
Anagrelide  
100,000 400,000  
/mm<sup>3</sup>

## 요 약

(Chronic myeloproliferative disorder)  
가

## References

- 1) Anagrelide Study Group : *Anagrelide, a therapy for thrombocythemic states : Experience in 577 patients. Am J Med* 92 : 69, 1992. *An original clinical study on the role of a new platelet-lowering agent anagrelide in chronic myeloproliferative disorders.*
- 2) Watson KV, Key N : *Vascular complications of essential thrombocythaemia : A link to cardiovascular risk factors. Br J Haematol* 83 : 198, 1993
- 3) Schafer AI : *Bleeding and thrombosis in the myeloproliferative disorders. Blood* 64 : 1-12, 1984
- 4) Cortelazzo S, Viero P, D'Emilio A, Rodeghiero F, Barbui T : *Incidence and risk factors for thrombotic complications in a historical cohort of 100 patients with essential thrombocythaemia. Journal of Clinical Oncology* 8 : 556-562, 1990
- 5) McIntyre KJ, Hoagland HC, Silverstein MN, Petitt RM : *Essential thrombocythaemia in young adults. Mayo Clinic Proceedings* 66 : 149-154, 1991
- 6) Johannes W Louwereuburg, et al : *Aspirin withdrawal in a patient with essential thrombocythemia : Possible cause of myocardial infarction. Am J of Med* 83 : 1175, Dec 1987
- 7) Pick RA, Glover MU, Nafo JJ, Dubbs WF, Gibbons JA,

- Vieweg WVR : *Acute myocardial infarction with essential thrombocythemia in a young man. Am Heart J* 106 : 406, 1983
- 8) From Tefferi A, Hoagland HC : *Issues in the diagnosis and management of essential thrombocytopenia. Mayo Clin Proc* 69-651, 1994
  - 9) Bennet, et al : *Cecil Textbook of Internal Medicine, Internal Medicine, 20th edi., pp922-924. Saunders* 1996
  - 10) Tefferi A, Ho TC, Ahmann GJ, et al : *Plasma interleukin-6 and C-reactive protein levels in reactive versus clonal thrombocytosis. Am J Med* 97 : 374, 1994
  - 11) Bellucci S, Janvier M, Tobelem G, Flandrin G, Charpak Y, Berger R, Boiron M : *Essential thrombocythaemias. Clinical evolutionary and biological data. Cancer* 56 : 2440-2447, 1986
  - 12) Fenaux P, Simon M, Caulier T, Lai JI, Goudemand J, Bauters F : *Clinical course of essential thrombocythaemia in 147 cases. Cancer* 66 : 549-556, 1990
  - 13) Juvonen E, Ikkala E, Oksanen K, et al : *Megakaryocyte and erythroid colony formation in essential thrombocythaemia and reactive thrombocytosis : Diagnostic value and correlation to complications. Br J Haematol* 83 : 192, 1993
  - 14) Stokes J, 3rd Kannel WB, Wolf PA, D'Agostino R, Cupples LA : *Blood pressure as a risk factor for cardiovascular disease. The Framingham study-30years of follow-up. Hypertension* 13 : 113-118, 1989
  - 15) Wolf PA, D'Agostino RB, Kannel WB, Bonita R, Belanger AJ : *Cigarette smoking as a risk factor for stroke. The Framingham study. Journal of the American Medical Association* 259 : 1025-1029, 1988
  - 16) Fitzgerald GA, Oates JA, Nowak J : *Cigarette smoking and hemostatic function. American Heart Journal* 115 : 267-271, 1988
  - 17) Murphy S, Iland H, Rosenthal D, Laszlo J, Essential thrombocythaemia : *An interim report for the P. vera study group. Seminars in Haematology* 23 : 177-182, 1986
  - 18) Hoagland HC, Silverstein MN : *Primary thrombocythemia in the young patient. Mayo Clinic Proceedings* 53 : 578-580, 1978
  - 19) Donehower RC : *An overview of the clinical experience with hydroxyurea. Semin Oncol* 19 (3 suppl 9) : 11, 1992
  - 20) Silverstein MN, Petit RM, Solberg LA Jr, Fleming JS, Knight RC, Schacter LP : *Anagrelide : A new drug for treating thrombocytosis. N Engl J Med* 318 : 1292-1294, 1988
  - 21) Andes WA, Novak RJ, Fleming JS, Buyniski JP : *Selective thrombocytopenia produced by the antiplatelet drug anagrelide[abstract]. Clin Res* 30 : 309A, 1982
  - 22) Middelhoff G, Boll I : *A long-term clinical trial of interferon-alpha therapy in essential thrombocythemia. Ann Hematol* 64 : 207, 1992
  - 23) Sedlacek SM, Curtis JL, Weintraub J, Levin J : *Essential thrombocythemia and leukemic transformation. Medicine* 65 : 353-364, 1986
  - 24) Kenneth KUN-YU WU, et al : *Platelet hyperaggregability and thrombosis in patients with thrombocythemia, Annals of Int Med* 88 : 7-11, 1978
  - 25) Vreeken J, Aken WG Van : *Spontaneous aggregation of blood platelets as a cause of idiopathic thrombosis and recurrent painful toes and fingers. Lancet* 2 : 1395-1397, 1971